

Figure 1. Schematic plan view map of the Red Chris porphyry corridor spanning East Ridge, East Zone, Main Zone and Gully Zone showing drill hole locations (Newcrest & Imperial) and significant Newcrest intercepts (drill intercepts have been reported in Appendix 1 of this report, and in prior Newcrest exploration releases) 0.3g/t Au, 1g/t Au, 0.3% Cu and 1% Cu shell projections generated from a Leapfrog model.

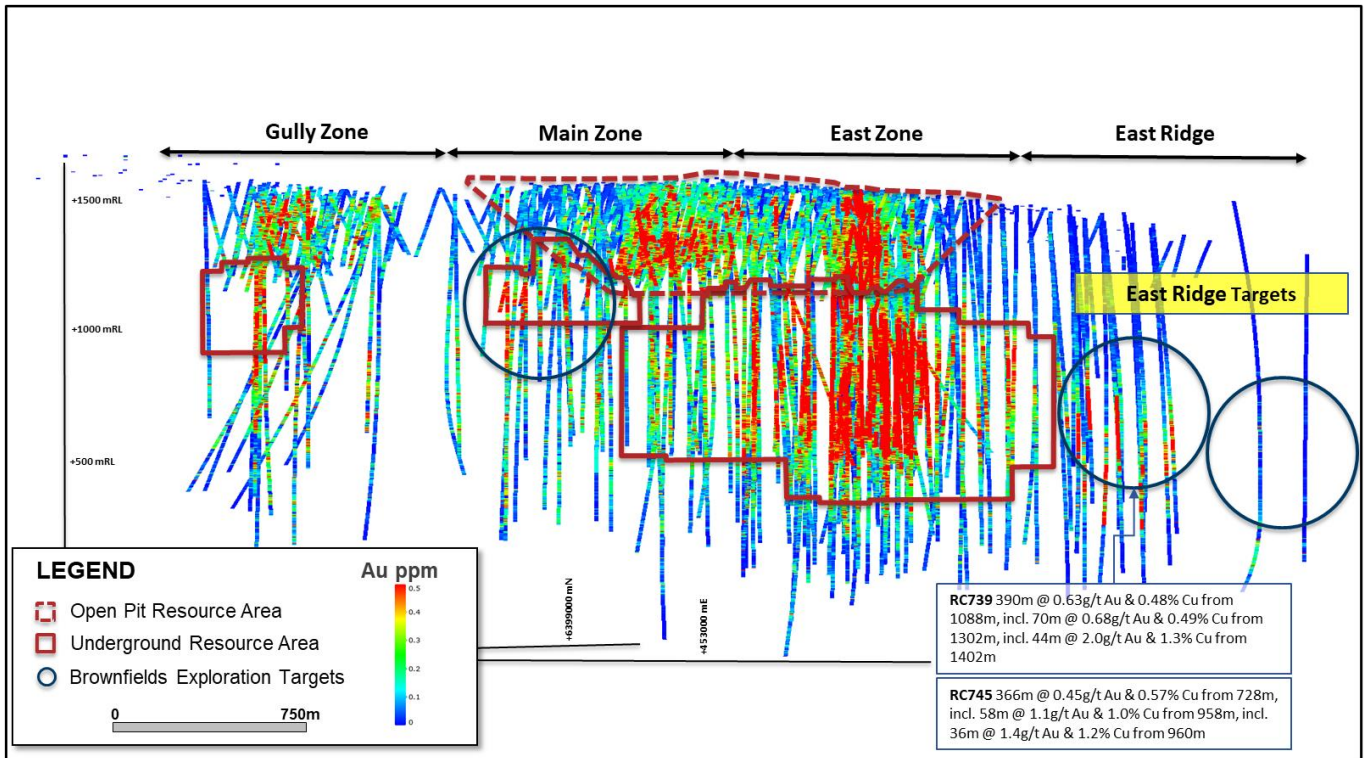


Figure 2. Long section view (looking North West) of the Red Chris porphyry corridor showing drill hole locations and gold distribution.

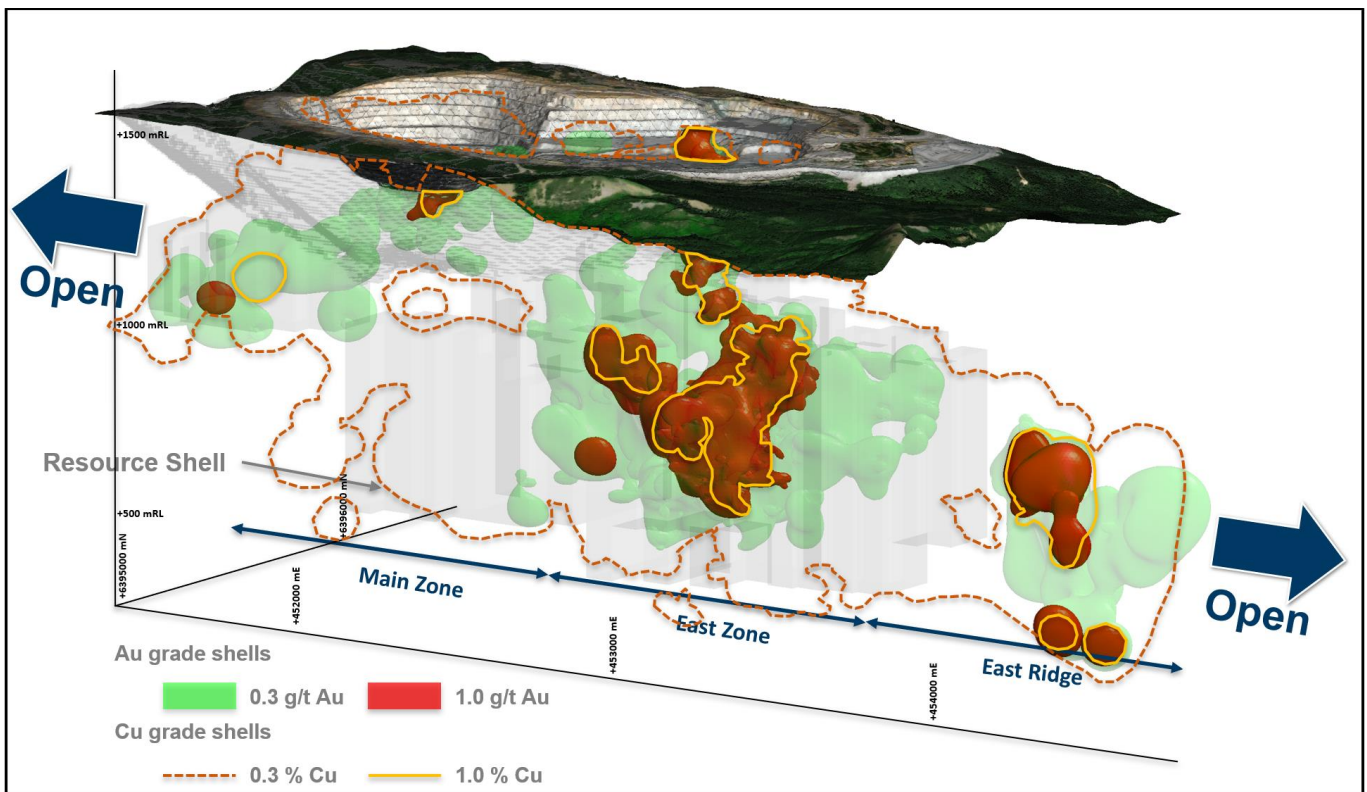


Figure 3. Oblique schematic section view of the Red Chris porphyry corridor showing gold distribution. 0.3 g/t Au, 1 g/t Au, 0.3% Cu and 1% Cu shell projections generated from the LeapfrogTM model.

Drillhole data

Red Chris Project, British Columbia, Canada

Reporting Criteria: Intercepts reported are downhole drill width (not true width) Au >0.1ppm (0.1g/t Au) and minimum 20m downhole width with maximum consecutive internal dilution of 10m. Also highlighted are high grade intervals of Au >0.5ppm (0.5g/t Au), Au >1ppm (1g/t Au), Au > 5ppm (5g/t Au), Au >10ppm (10g/t Au) and minimum 10m downhole width with maximum consecutive internal dilution of 10m. Gold grades are reported to two significant figures. Samples are from core drilling which is HQ or NQ in diameter. Core is photographed and logged by the geology team before being cut. Half core HQ and NQ samples are prepared for assay and the remaining material is retained in the core farm for future reference. Each assay batch is submitted with duplicates and standards to monitor laboratory quality. Total depth (end of hole) is rounded to one decimal place for reporting purposes.

Hole ID	Hole Type	Easting (m)	Northing (m)	RL (m)	Total Depth (m)	Azimuth (GRID)	Dip	From (m)	To (m)	Interval (m)	Au (ppm)	Cu (pct)	Cut off
RC735	DD	453568	6396656	1392	1501.8	147	-58	888	1128	240	0.49	0.53	0.1
							incl.	972	986	14	0.52	0.77	0.5
							incl.	1012	1114	102	0.82	0.59	0.5
							incl.	1068	1092	24	1.4	0.68	1
								1148	1170	22	0.33	0.45	0.1
								1216	1296	80	0.25	0.35	0.1
RC739	DD	453383	6396811	1451	1681.5	146	-57	1088	1478	390	0.63	0.48	0.1
							incl.	1244	1282	38	1.8	0.71	0.5
							incl.	1246	1268	22	2.6	1.0	1
							incl.	1302	1372	70	0.68	0.49	0.5
							incl.	1402	1446	44	2.0	1.3	0.5
							incl.	1402	1446	44	2.0	1.3	1
RC740	DD	453407	6397178	1465	2142.2	146	-45	Assays Pending					
RC745	DD	453624	6396544	1403	1364.3	145	-60	728	1094	366	0.45	0.57	0.1
							incl.	880	944	64	0.64	0.53	0.5
							incl.	958	1016	58	1.1	1.0	0.5
							incl.	960	996	36	1.4	1.2	1
RC746	DD	453207	6396497	1432	1043.1	150	48	110	130	20	0.11	0.01	0.1
								552	652	100	0.22	0.22	0.1
								664	716	52	0.11	0.17	0.1
								734	766	32	0.11	0.19	0.1
								956	990	34	0.15	0.02	0.1
RC747	DD	453548	6396527	1403	1268.2	149	-59	706	1012	306	0.28	0.39	0.1
							incl.	880	926	46	0.77	0.86	0.5
							incl.	896	916	20	1.1	1.2	1
								1094	1120	26	0.13	0.19	0.1
RC748	DD	453240	6396830	1461	1790.2	145	-60	Assays Pending					
RC750W	DD	453340	6396870	1456	1843.2	146	-58	Assays Pending					
RC751	DD	452126	6396252	1520	1200.6	123	-63	Geotechnical Hole - Not Sampled					
RC754	DD	453584	6396467	1409	1034.1	150	-57	Assays Pending					
RC755	DD	452579	6396361	1491	1218	134	-76	Geotechnical Hole - Not Sampled					
RC765	DD	451551	6395471	1522	1059.1	156	-65	Assays Pending					
RC769	DD	451939	6395148	1539	638.5	323	-56	Assays Pending					
RC770	DD	452705	6395448	1482	1128.7	357	-64	Assays Pending					
RC771	DD	452697	6396522	1463	1226.5	142	-66	Geotechnical Hole - Not Sampled					

Hole ID	Hole Type	Easting (m)	Northing (m)	RL (m)	Total Depth (m)	Azimuth (GRID)	Dip	From (m)	To (m)	Interval (m)	Au (ppm)	Cu (pct)	Cut off
RC772	DD	453128	6396855	1462	100	360	-90	Geotechnical Hole - Not Sampled					
RC773#	DD	453651	6396726	1379	1436.4	148	-58	Assays Pending					
RC774#	DD	453109	6396596	1443	1442.1	143	-62	Assays Pending					
RC775	DD	451965	6395069	1537	1052.3	328	-68	Assays Pending					
RC776	DD	451495	6395271	1530	649.9	148	-59	Assays Pending					
RC777#	DD	453542	6396786	1377	1511	149	-58	Assays Pending					
RC778	DD	451495	6395271	1530	809.1	149	-70	Assays Pending					
RC779#	DD	453419	6396887	1442	521.2	144	-56	Assays Pending					
RC780	DD	453145	6396835	1460	530.4	252	-90	Geotechnical Hole - Not Sampled					
RC781#	DD	452126	6396252	1519	575.5	173	-77	Geotechnical Hole - Not Sampled					
RC782#	DD	451506	6395556	1516	295.3	159	-66	Assays Pending					
RC783#	DD	451557	6395465	1529	48	77	-54	Geotechnical Hole - Not Sampled					
RC784#	DD	452698	6395444	1482	129	339	-71	Geotechnical Hole - Not Sampled					

#drilling in progress. **partial intercept, assays pending. ^updated intercept ^previously reported intercept

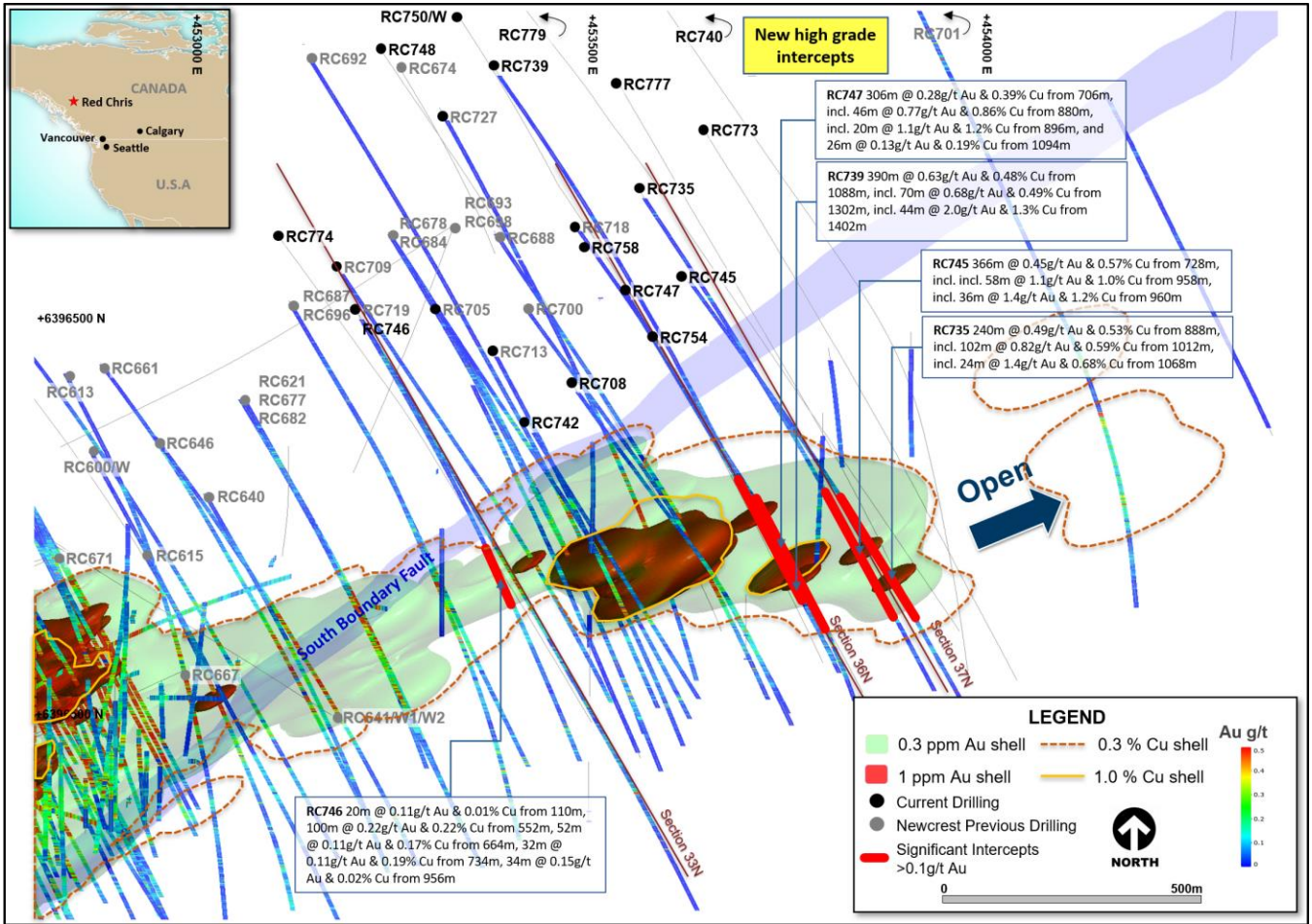


Figure 7. Schematic plan view map of the East Ridge showing drill hole locations (Newcrest & Imperial) and significant Newcrest intercepts (drill intercepts have been reported in Appendix 1 of this report, and in prior Newcrest exploration releases). 0.3 g/t Au, 1 g/t Au, 0.3% Cu and 1% Cu shell projections generated from a Leapfrog model.

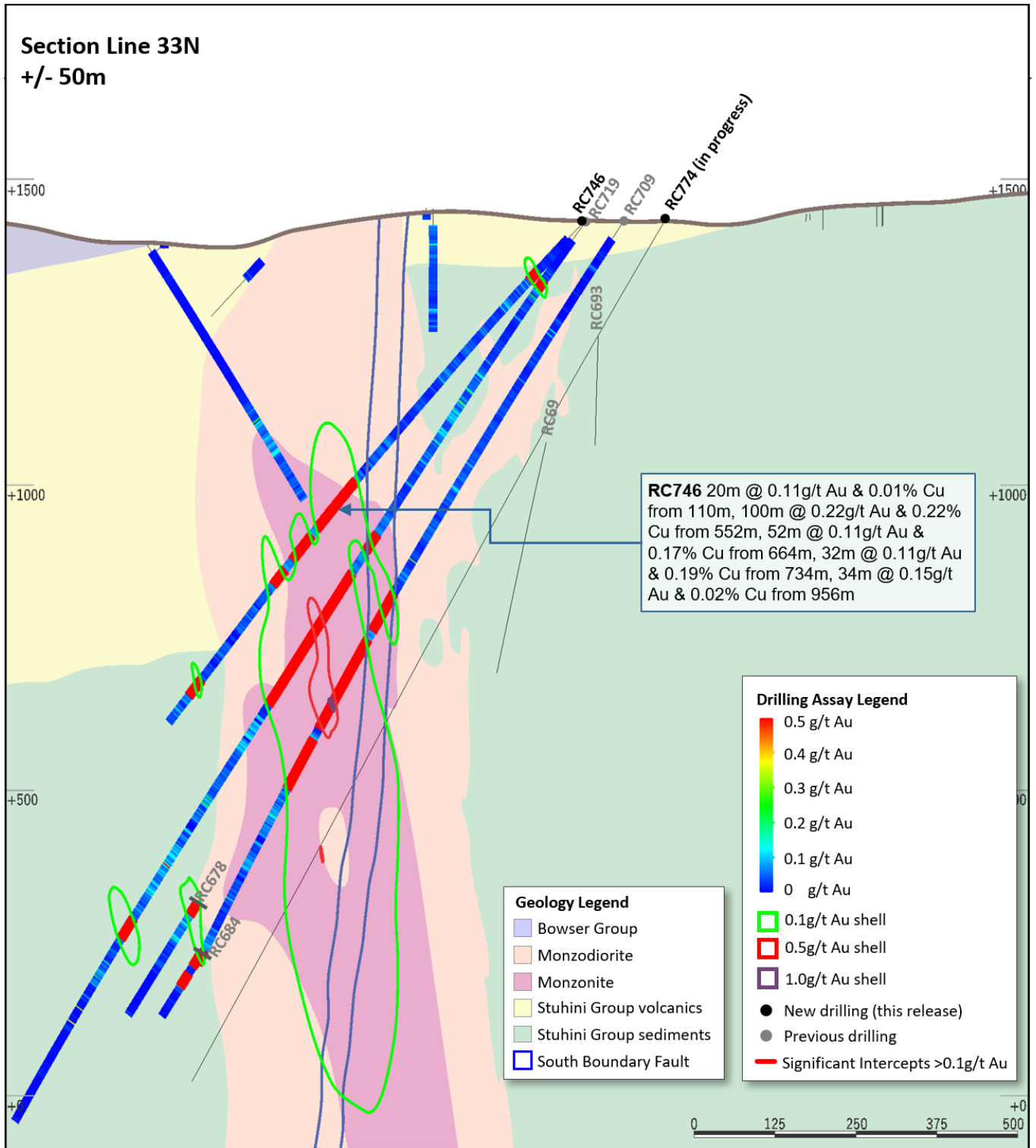


Figure 8. Schematic cross section of RC746 and RC774 (Section Line 33N – as shown on Figure 7) showing Newcrest and Imperial drill holes and Newcrest intercepts (drill intercepts have been reported in Appendix 1 of this report, and in prior Newcrest exploration releases) 0.1 g/t Au, 0.5 g/t Au and 1 g/t Au shell projections generated from Leapfrog model. Due to window size (+/- 50m) and section orientation (150°) hole may appear on multiple sections.

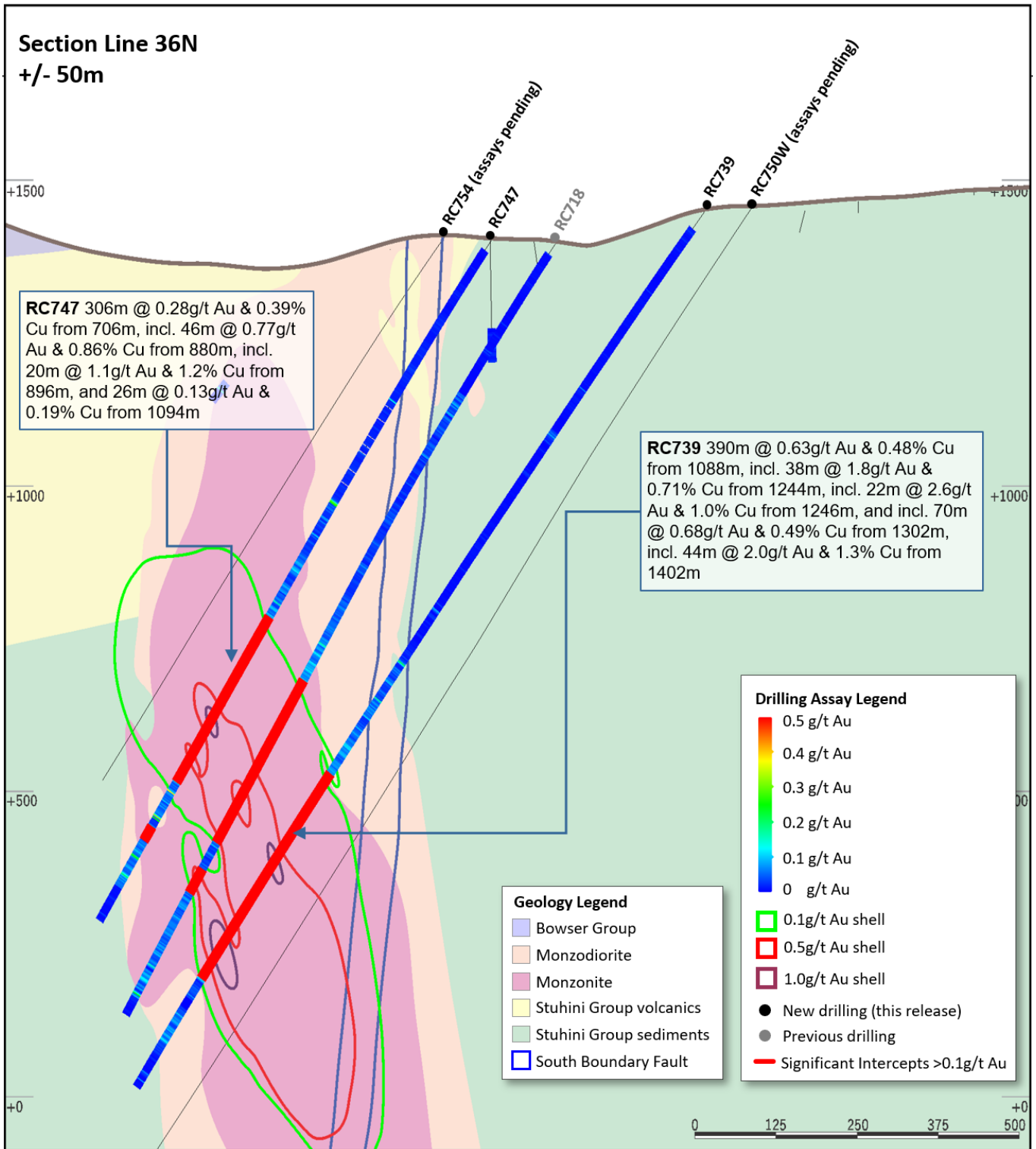


Figure 9. Schematic cross section of RC739 and RC747 (Section Line 36N – as shown on Figure 7) showing Newcrest and Imperial drill holes and Newcrest intercepts (drill intercepts have been reported in Appendix 1 of this report, and in prior Newcrest exploration releases) 0.1g/t, 0.5g/t Au and 1g/t Au shell projections generated from Leapfrog model. Due to window size (+/- 50m) and section orientation (150°) hole may appear on multiple sections.

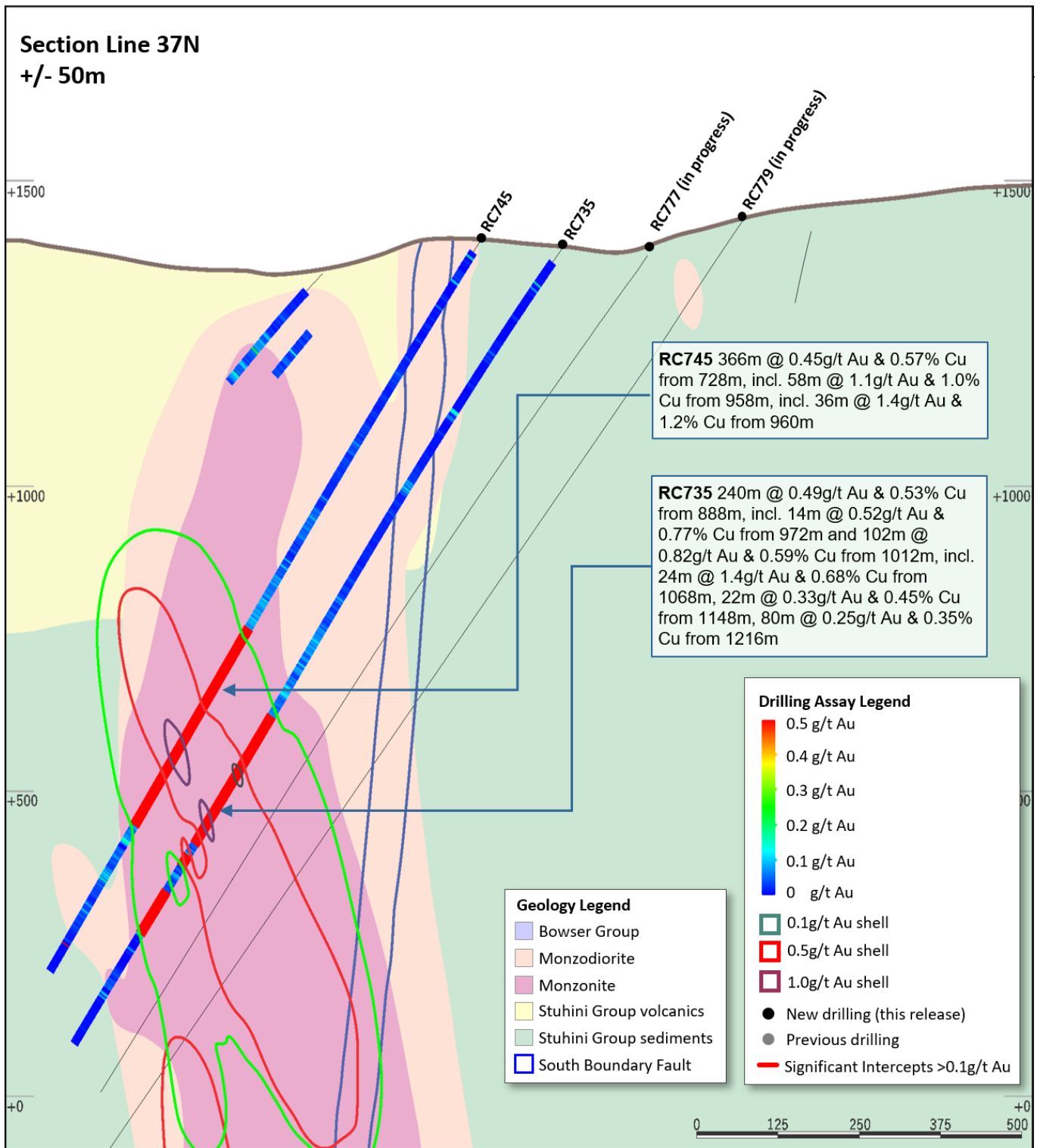


Figure 10. Schematic cross section of RC735 and RC745 (Section Line 37N – as shown on Figure 7) showing Newcrest and Imperial drill holes and Newcrest intercepts (drill intercepts have been reported in Appendix 1 of this report, and in prior Newcrest exploration releases) 0.1g/t, 0.5g/t Au and 1g/t Au shell projections generated from Leapfrog model. Due to window size (+/- 50m) and section orientation (150°) hole may appear on multiple sections.