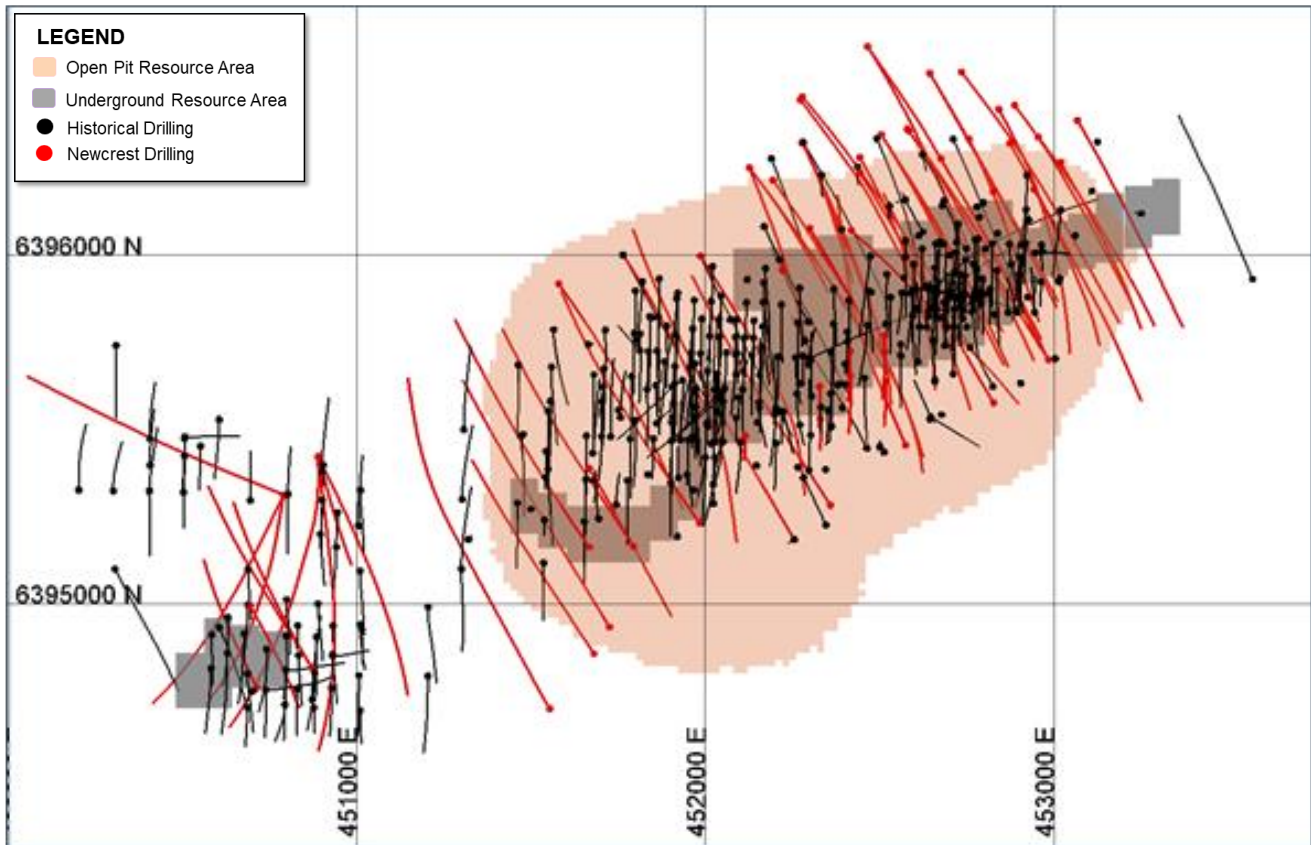
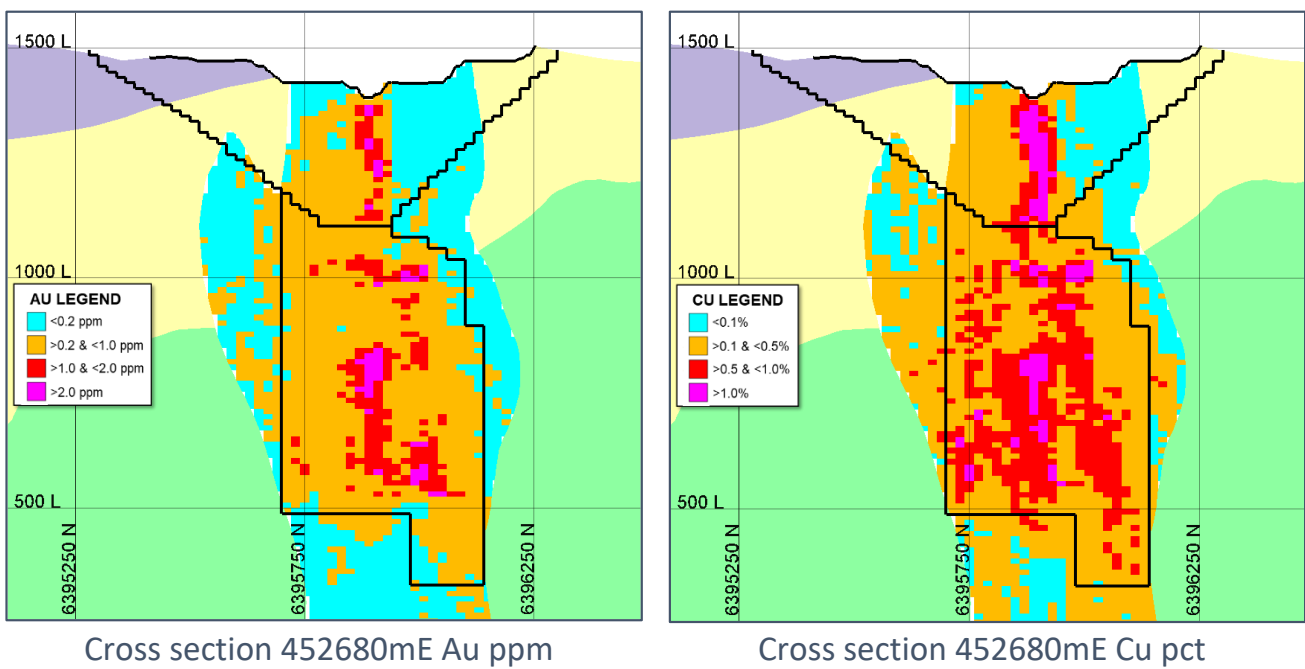


**Figure 1.** Schematic plan view map of the Red Chris porphyry corridor spanning East Ridge, East Zone, Main Zone and Gully Zone showing drill hole locations (Newcrest & Imperial). 1 g/t AuEq and 2 g/t AuEq shell projections generated from a Leapfrog model. Gold equivalent (AuEq) grade calculated using a copper conversion factor ( $[\text{gold grade (g/t)}] + [\text{copper grade (\%)} \times 1.67]$ ), using US\$1,400/oz Au, US\$3.40/lb Cu and 100% recovery.



**Figure 2.** Schematic plan view map of the Red Chris Mineral Resource footprint and drill hole locations.



**Figure 3.** Schematic section views of the Red Chris Mineral Resource shells for open pit and underground. Note the current assumption is open pit resources are defined within an optimized pit shell limited to the 1112mRL and underground resources below the open pit resource.