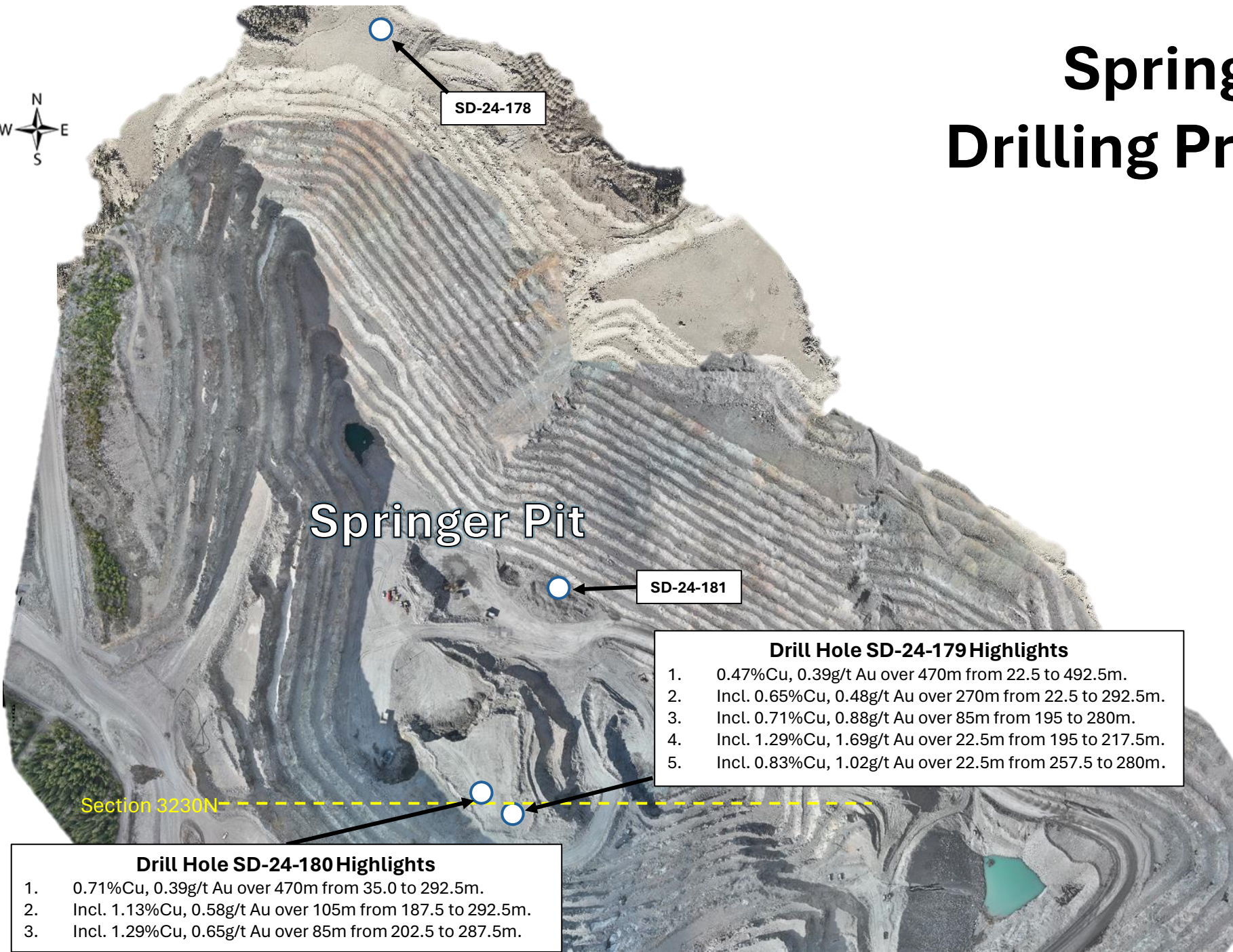


# Springer Pit Drilling Project 2024



Springer Pit

SD-24-178

SD-24-181

- Drill Hole SD-24-179 Highlights**
1. 0.47%Cu, 0.39g/t Au over 470m from 22.5 to 492.5m.
  2. Incl. 0.65%Cu, 0.48g/t Au over 270m from 22.5 to 292.5m.
  3. Incl. 0.71%Cu, 0.88g/t Au over 85m from 195 to 280m.
  4. Incl. 1.29%Cu, 1.69g/t Au over 22.5m from 195 to 217.5m.
  5. Incl. 0.83%Cu, 1.02g/t Au over 22.5m from 257.5 to 280m.

Section 3230N

- Drill Hole SD-24-180 Highlights**
1. 0.71%Cu, 0.39g/t Au over 470m from 35.0 to 292.5m.
  2. Incl. 1.13%Cu, 0.58g/t Au over 105m from 187.5 to 292.5m.
  3. Incl. 1.29%Cu, 0.65g/t Au over 85m from 202.5 to 287.5m.



**Imperial  
Metals**

**Mount Polley Mine  
Drilling Project  
May 2024**

Scale  
300 meters

