



## **Mount Polley Mining Corporation**

an Imperial Metals company  
Box 12 • Likely, BC V0L 1N0 • T 250.790.2215

# **MOUNT POLLEY MINING CORPORATION (MPMC) PUBLIC LIAISON COMMITTEE (PLC) MEETING SUMMARY**

### **Meeting Details**

In person Meeting and Conference Call  
General Meeting – Q1 2024

January 17, 2024

9:00 am to 1:00 pm

Meeting held at the Likely Community Hall, located at 6281 Rosette Lake Road in Likely, BC

Meeting Called by: MPMC Designated Representation

Meeting Chaired by: Gabriel Holmes

Minutes by: Alicia Lalonde

Member	Present	Call-in	Organization
Aaron Higginbottom			T'exelc - Williams Lake First Nation
Abhirosh Chandran		x	Ministry of Environment and Climate Change Strategy
Alicia Lalonde		x	DWB Consulting (MPMC)
Alex Gresl			Williams Lake Chamber of Commerce
Ann Godon		x	Ministry of Environment and Climate Change Strategy
Bee Hooker			Big Lake Community
Bill Carruthers			Williams Lake Community
Christine McLean		x	Mitchell Bay Community
Darren Sargeant			Xat'sull - Soda Creek First Nation
Don Parsons		x	Imperial Metals (MPMC)
Doug Watt	x		Likely Resident
Emily Sonneg			Xat'sull - Soda Creek First Nation
Erin Rainey			Ministry of Environment and Climate Change Strategy
Gabe Holmes	x		Mount Polley Mining Corporation (MPMC)
Jackie Sarginson			MLA Cariboo North Coralee Oaks Office
Jason Raine			University of Northern BC and Quesnel River Research Centre
Jason Ryll			Williams Lake Chamber of Commerce
Jilliam Tamblyn			Ministry of Environment and Climate Change Strategy
Johanna Godt		x	Sedgewick Strategies (MPMC)
Kala Ivens	x		T'exelc - Williams Lake First Nation
Kelly Parker			MPMC
Ksenia Kolodka		x	Xat'sull - Soda Creek First Nation
Linda Bartsch			Horsefly Business
Lisa Kraus			Likely and District Chamber of Commerce
Lyn Anglin			Consultant to Imperial Metals (MPMC)
Mathieu O'Leary			MPMC
Maureen LeBourdais			Cariboo Regional District
Melanie St Arnault		x	Ministry of Energy, Mines, and Low Carbon Innovation
Micky McIntosh			Likely Resident
Nishitha Singi			T'exelc - Williams Lake First Nation
Richard Holmes			Little Lake Community
Spencer Neufeld			T'exelc - Williams Lake First Nation
Steve Hocquard			Horsefly Community
Surinderpal Rathor			Williams Lake Government
Victoria Stevens		x	Ministry of Energy, Mines, and Low Carbon Innovation
Walt Cobb			Williams Lake Resident
<b>Guests</b>			
Paul Beddoes		x	Ministry of Energy, Mines, and Low Carbon Innovation

**Meeting Start: 9:05 am**

**Roll Call – Introductions and acknowledgements – Gabriel Holmes**

- I'd like to acknowledge that we operate on unceded traditional territories and work in partnership with the Williams Lake and Xat'sūll First Nations.
- We had some changes of membership within the Ministry of Environment. Jillian Tamblyn and Erin Rainey are now on our file and are joining us on the committee.
- Paul Beddoes, a senior environmental geoscientist with EMLI reviewing Mount Polley's applications, is a guest attending the meeting. Melanie suggested he call in to get some context on the site.

**Additions to Agenda, and Approval of Agenda – Gabriel Holmes**

- As I have indicated in the agenda, we are going to go over the following:
  - PLC Membership and Terms of Reference Review
  - ENV/EMLI Discussion/Compliance Review
  - Permitting/Amendment Applications
  - Environmental Monitoring Update
  - Discharge/WTP Update
  - Water Management Update
  - Remediation/Reclamation Update
  - Mining Update
  - Roundtable Discussion
  - PLC Questions/Comments
  - Next Meeting – April 3, 2024?
- Does anyone have additions to the agenda, or have objections to it? If not, we are going to move on through what we have planned.
- Agenda approved as written.

**PLC Membership and Terms of Reference (ToR) Review – Gabriel Holmes**

- There are still numerous vacancies on the committee. We should endeavor to fill them.
- In our Q3 meeting, we discussed having a member from the First Nations Health Authority. I emailed Kiera Dolighan at Cwelcwélt Health Station to represent the First Nation Health Authority as Spencer suggested, and she responded that she could not commit to becoming a committee member though she was interested in our activities. I also emailed Helen England from Horsefly but did not receive a response. I need to follow up with her. I talked to our HR department, Judith Gagnon about the Mount Polley representative and United Steel Workers representative. Judith said she would bring up the seats at an upcoming meeting.
- Each of us as members can identify people and reach out to people that may be interested in joining the committee. If anyone has someone in mind, an individual or organization, please forward that to me.
- Minor updates were made to the terms of references in the table of the ToR eg: FTP site to Sharepoint site, GoTo Meeting was changed to Teams meeting. I will circulate the amended ToR with the changes tracked very soon.

## Communications

- We are always asking ourselves if we are good communicators and if we are providing the information that everybody wants. There is always room for improvement.
- It is important that we communicate to the regulators and stakeholders regularly, our doors are always open.
- We are committed to our communications plan.
- We have the PLC, Sharepoint and other websites, meetings, calls and presentations, tours and reporting to convey information.
- Safety:
  - Mount Polley Mining Corporation is committed to providing a safe and inclusive work environment to all its workers, staff, contractors and guests.
  - Initiatives:
    - Quarterly site wide communication meetings
    - Regularly scheduled departmental safety meetings (monthly) and Shift Cycle Audits (each department conducts a weekly audit of their work area where hazards and potential hazards are identified and passed onto the cross shift)
    - Joint Occupational Health and Safety and Environmental Committee (meet monthly)
    - Mine Rescue training weekly
  - Safety statistics are included in the table below. In 2023, there were 0 lost time accidents, 14 medical aids, 62 first aids and 10 reportable incidents.
  - Safety share: We've had a recent snowfall. Please drive carefully and drive for the conditions.
  - We did share these safety stats with the First Nations in our IC meeting on Monday and we are in the middle of the pack from the MABC stats. With the implementation of those initiatives and the safety culture at the mine we have improved our safety stats from when the mine resumed operations in 2022.

Reportable Injuries/ Incidents		
	Dec. MTD	2023 YTD
Lost Time Accident	0	0
Medical Aid	5	14
First Aid	3	62
Reportable Incident	1	10

- A Community Initiatives Committee has been formed and has committed support for various community events such as the WL Indoor Rodeo, Heavy Metals Rocks- Highschool student integration into the work force, Mining for Miracles Charity BBQ and Thrill of the Grill contest benefitting BC Children's Hospital, MPMC Fishing Derby, Big Lake Fishing Derby, BC Mine Rescue/First Aid Competition, National Indigenous Peoples Day, Williams Lake Stampede, Performances in the Park, company golf tournaments and company Christmas parties. We have received a lot of positive feedback and we are proud to be a part of these events. Please let us know if there are any organizations or events that we can donate to.
- Supply Chain

- We are committed to supporting local economies and rely heavily on local businesses to satisfy our needs. We see significant monthly expenditures in local communities and are committed to our local suppliers and communities.

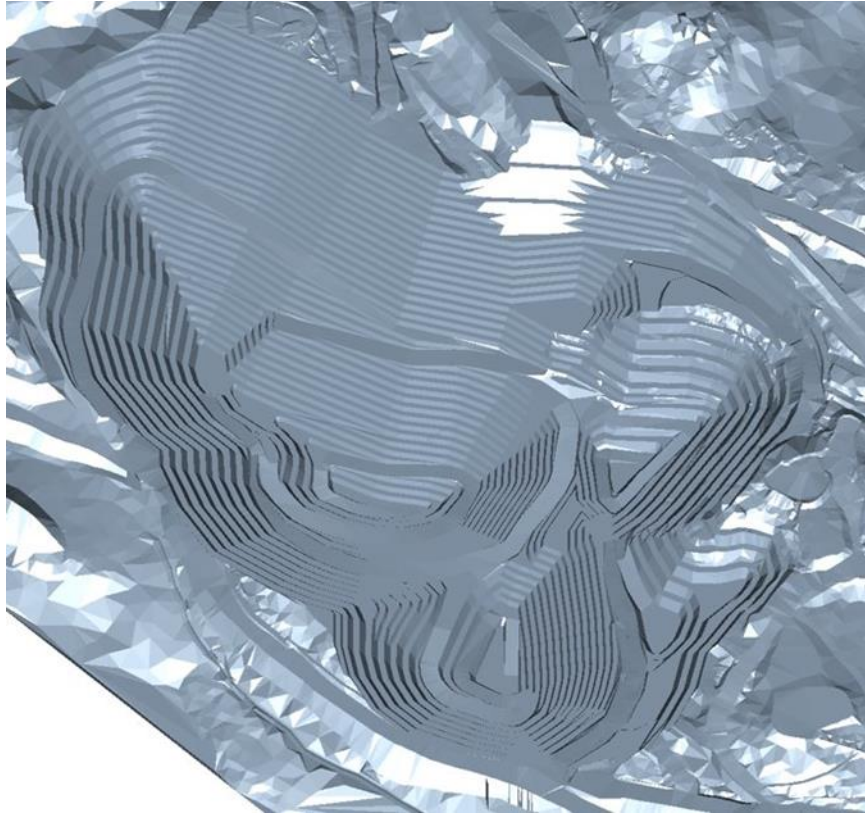
## ENV/EMLI Discussion/ Compliance Review

- Let's open up the floor to ENV and EMLI. Anne, Victoria, Melanie and Paul, do you have anything to bring to the committee's attention regarding compliance from a regulatory perspective?
- Ann Godon (AG): I am the environmental protection officer on this file. I will let you know that Abhirosh has been working hard on the CEMP review. We are onto the second round of comments so that review will be wrapping up soon and we will be moving toward a decision. For my part, I have been working with EMLI screening the application for the Springer Expansion at the moment against the Information Requirements table.
- GH: Melanie or Victoria do you have anything to add?
- Melanie St Arnault (MSA): I don't have anything to add, no.
- Victoria Stevens (VS): I don't have anything to add. A reclamation inspection was completed in the summer by two of my coworkers so they were following up on that. I am not working on any applications right now for Mount Polley.
- This is a standing agenda item so there will be the opportunity to present information at each of these meetings.

## Permitting/Amendment Applications – Don Parsons

	Permit	Projects	Pre-Application	Application Submission	Approval
Joint Application					
Springer Expansion	M-200 Permit 11678	Springer Pit Expansion Southeast Rock Disposal Site Northwest PAG Stockpile Disposal Date Quesnel Lake Discharge [Operation] NAG/PAG Ratio Modernization	Dec 2022	Dec 8, 2023	July 2024
Individual Applications					
NAG Borrow	M-200	NAG Borrow Mining Highwall Pushback	Nov 5, 2023	Nov 15, 2023	Jan 2024
TSF Reslope < 970m	M-200	TSF Embankments Reslope to 2H:1H	Dec 12, 2023	Jan 5, 2024	Feb 2024
TSF 970m to 974m	M-200	TSF to 974m [Interim design]	Jan 15, 2024	Feb 2024	July 2024
TSF 974m to 987m	M-200	TSF to 987m [LoM design]	TBD	May 2024	Q3 2024
Notice of Departures / Self-Assessment					
		No Projects in Queue			

- Joint Application:
  - Springer Expansion: This is our most active file. It includes expanding the Springer Pit for another 8 years of ore feed, building the Southeast Rock Disposal Site larger with NAG rock, Northwest PAG Stockpile Disposal (where the PAG is stored until it can be placed back into the Springer Pit at the end of mine life, includes the extension of the Quesnel Lake Discharge period [to include Operational phase of the mine], geochemical aspects of the NAG/PAG ratio (how we define material that is PAG and how we make the split between NAG and PAG material). The Ministry has made comments on the reclamation piece and geotechnical piece, I am replying to the regulators screening comments. It is still a draft application. After we have addressed all of the screening comments, we will make changes to the report and that will be the final application.
- Individual Applications:
  - NAG Borrow Mining Highwall Pushback: It is a pushback on the Springer Pit to provide more NAG material. What we are doing there with the NAG material is building the co-disposal facility to store the tailings that are in the Springer Pit and removing tailings and mixing them with NAG rock and putting it in the co-disposal facility on top of the Southeast stockpile. We need NAG rock to build the cells and we are also proposing to add additional buttressing below the slopes of the TSF below 970m. Some of the slopes there are 3:1 and we want to get them to 2:1 and 2:1 is the slope that we are recommending for the final reclamation slope of the TSF. It's part of the reclamation plan to do that and we would like to get it done sooner. What that also does is widens the crest out so we can add more meters to the top of the dam. That's in front of the Ministry right now and I expect that we are going to get an M-200 permit amendment to go ahead with that work in the first half of 2024.
  - TSF Embankments Reslope to 2H:1H: This is being handled as a separate M-200 amendment. This addresses the geotechnical aspects of the work we are proposing to create that 2:1 slope.
  - TSF to 974m [interim design]: This is the initial lift we want to put on the dam. There is a design plan that we are going to have from the EoR in February and then we will be putting in a permit amendment application to add these 4m over 2 years to the top of the dam.
  - TSF to 987m [LOM design]: This is a future permit amendment that I have included. It is part of future work we want to do to lift the dam. We have been doing a lot of site investigation work downstream of the embankments and we are using the samples that have been taken and the stratigraphy to help with the design above 974 to 987m. The samples are currently at the lab and there will be an upcoming characterization report and eventually a design report to go above 974m sometime in the future.
- Notice of Departure (These are items that the Ministry can approve without going through a detailed permit review):
  - No projects in the queue.
- The Springer Expansion joint application was provided to the PLC on Jan 15, 2024 via the PLC Sharepoint site. As PLC members all of you should have access to the Sharepoint site. As I recall, I did not enquire with our IT department about getting Ann, Jillian and Erin access to the site. I did send an email earlier this week and we should get that access provided in a timely fashion. I will follow up on that.
- This is the life of mine pit design somewhere around 2032 before we expect to backfill it. Review the Springer Expansion joint application. It is an onerous document. There is a lot of required information. These projects don't ever get simpler. They are complex.

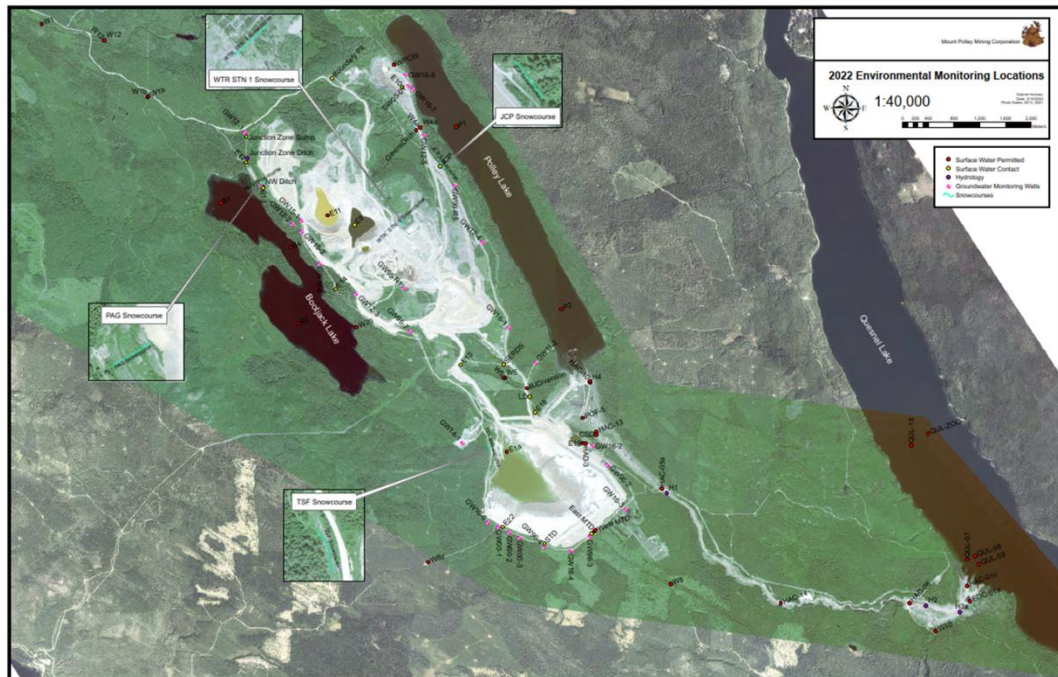


### Environmental Monitoring Update – Gabriel Holmes

- Waste Management
  - We generate a lot of waste at a facility such as this and it is important that it be disposed of in a responsible fashion.
  - We have a permitted landfill (under the *Environmental Management Act [EMA]*) on site and have many recycling initiatives underway.
  - We are all responsible for our own waste.
  - Clean up and proper disposal of waste is part of our job.
  - Applicable regulations: *EMA*, Hazardous Waste Regulation, Ministry of Environment Permit PR 14590
  - We have independent management waste streams for: food waste, drink containers, paper, cardboard, 5-gallon pails, etc.
  - GFL Environmental is the service provider for hazardous and non-hazardous waste, they take our waste oil, rags, etc.
  - We have a lot of guidance documents that we provide to each department but we have hands on training coming up. We have developed a training module and will be rolling it out in the upcoming months.
- Throughout the quarter we've completed:
  - Water sampling, including surface water, groundwater, contact water and seepage
  - Flow monitoring in local streams, ditches and pipelines around the site
  - Wildlife monitoring- Some of you may have read our study design for wildlife monitoring. It is a 10-year study looking at usage in the Hazeltine Creek corridor compared to control sites
  - Spawning surveys in Hazeltine Creek, specifically. In the fall we conducted a number of surveys but I think we saw a little over 400 sockeye salmon in the system this fall



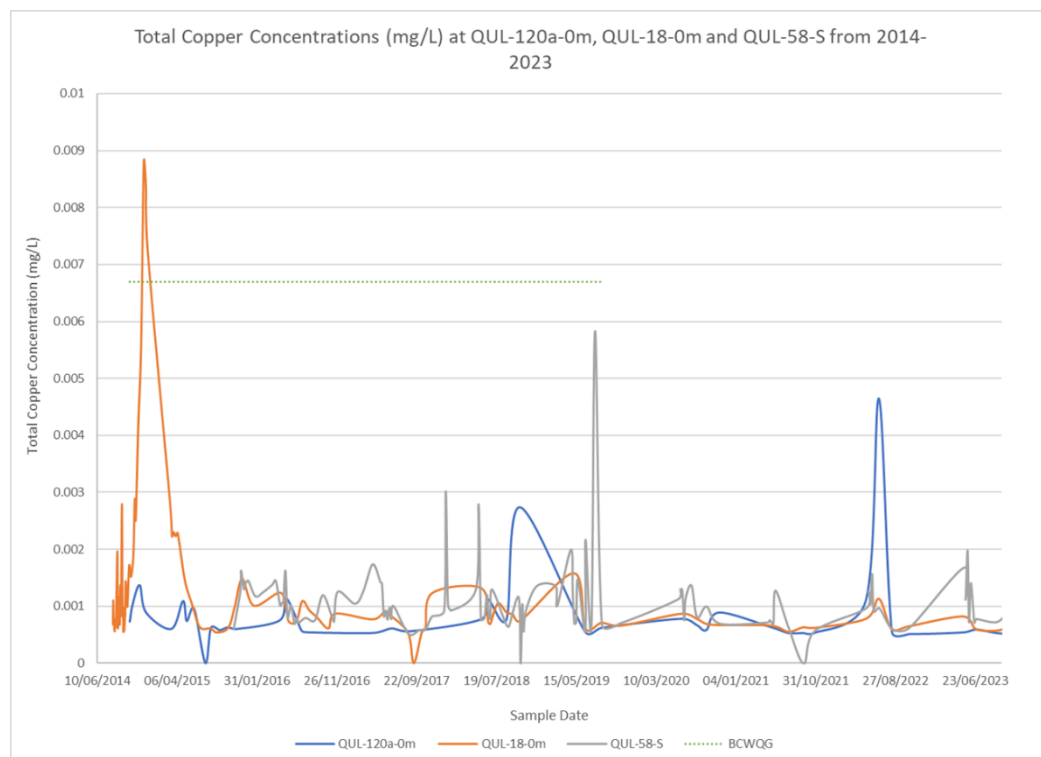
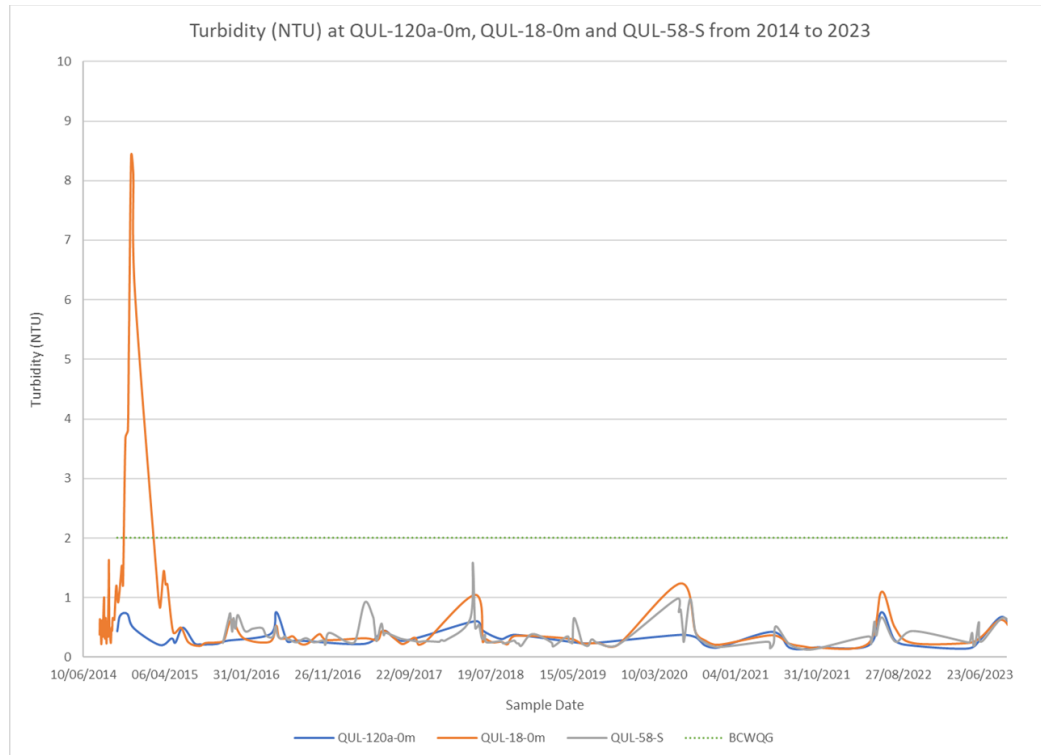
- Weather monitoring - We measure things like rain, temperature, wind direction, wind speed, gust speed, solar radiation, relative humidity, and dew point. We recently purchased a total precipitation gauge to give us a higher level of precision in our manual snowpack measurements. Measurements are time consuming. We have 4 snow courses on site. Each site has 10 locations that we measure and it is a 2-person job. It will typically take 3-4 hours for 2 people to complete. That only gives you a snapshot of that day. We have purchased a Pluvio-2 total precipitation gauge that can interface with our existing weather stations. It has not arrived yet so we may not be able to install it this season although we do have an installation platform at one of our weather stations. This is one comment that had come up in the CEMP review comments from the ENV hydrologist. Concurrently, with us purchasing this total precipitation gauge was the comment that ENV may be recommending that a total precipitation gauge be obtained. It will give us more precision with the measurements and allow melting events to be captured more accurately.
- Waste management- we discussed that earlier
- Inspections- We conduct waste management inspections, water management inspections, etc. There is a water management inspection manual that pump watch personnel adhere to
- Reporting- Monthly, quarterly and annual reporting requirements. We have reports for ENV, EMLI and Interior Health
- Planning- A lot of what we do cannot be done without diligent planning
- 2023 CEMP Review- We are undergoing our 2023 CEMP review. The second round of comments have been received and responded to. It sounds like Abhi is working diligently to get through that. I am very pleased with how the review is going.
- This is a map of our monitoring locations around the site. I will update this map for our reporting.







- At our previous meeting we talked a little bit about a turbidity event that we observed in Quesnel Lake in the mid to late fall. These photos are from the end of October. There was some frothiness on the surface as you can see in the photo on the right. The photo on the left is an overview shot from our monitoring location QUL-120a just up lake from Plato Island and we saw it there too. We reviewed the profile data and it shows a turbidity increase in the top 5-10m of the water column. It looks like there is usually a big turnover event in the east arm in September that liberates a bunch of material from the Niagara River. We don't know what was occurring there. We collected chemistry data that was within the typical range including TSS, turbidity and total copper. I've spoken with Jason Raine at the QRRRC and Ellen Petticrew one of the researchers for UNBC at the QRRRC. They collected some phytoplankton and zooplankton samples looking for one particular type of plankton that Ellen suspected may have moved into Quesnel Lake. If you have more questions about it, you can speak directly with Ellen or give Jason a call. If it is a plankton related event, we may have captured it. We did our final plankton sampling event in August so if this event was taking place we sampled during that time. I did instruct Minnow to review the taxonomy composition to see if there is anything new or is there is an increase in density but that data is yet to come in. I saw it from the bridge in Likely all the way to Plato Island and toward the junction. I called the manager at Silver Tip Lodge and she didn't notice anything unusual. She said it's always green at the end of the lake. You can sure see it on the Sentinel Hub website if you look at the photos from the end of August through to the end of September and compare it to other nearby lakes, it is very obvious.



- This graph shows the copper concentrations so if you look at the bottom right that is the last sample event. We thought that if it related to outwash material in the lake, we should see a copper signature. To the far left, that is December 2014 when the lake turned over and we had some signature minerals and metals that turned up relating to the Mount Polley tailings dam. The data didn't really reveal anything regarding this last event. We are still investigating it but we are not any closer to getting an

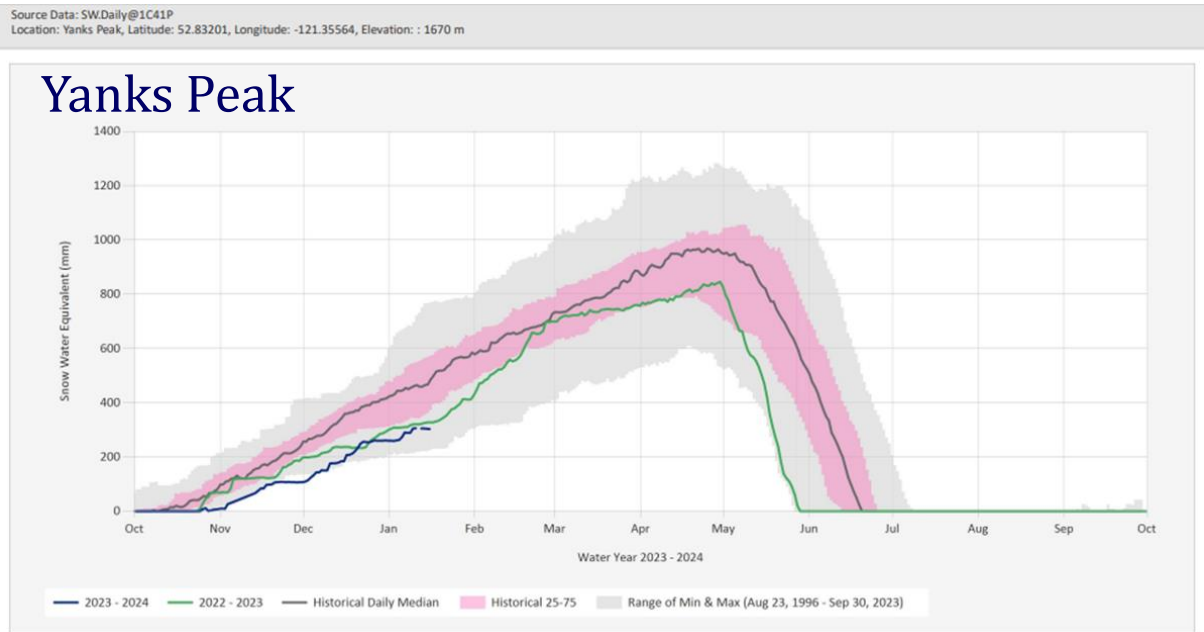
answer unfortunately. The only lead we have left is our plankton data unless Ellen and her team at the QRRC come up with something.

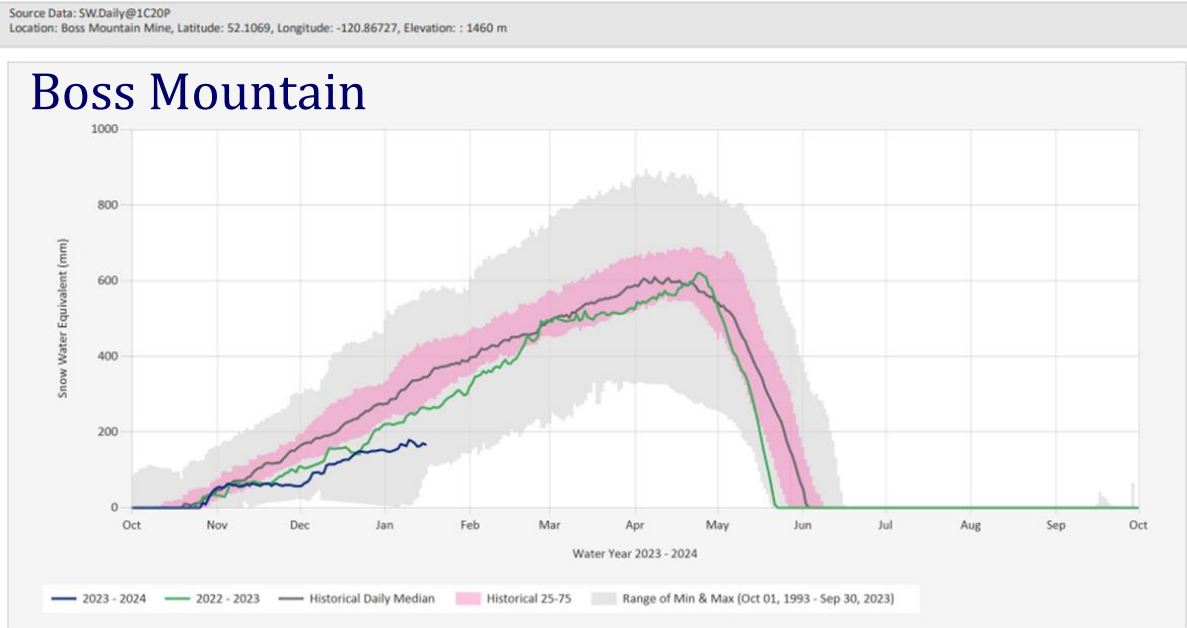
- We do have some monitoring work associated with a project coming up. There is a log structural bridge over Bootjack Creek on the mine site and we need to replace it. We intend to haul material down to the dam so we are going to replace the bridge. Design work for a log structural bridge is being completed by Celtic Engineering. The Environmental Management Plan is being prepared by DWB. They are going to do the work isolation and fish channel. We will be submitting a Water Sustainability Act notification and possibly a DFO request for review.
- 2024 snowpack is well below average. The extended drought continues. This table is our 2024 data compared to our average max and minimum. We are at the minimum since 1995. It's not just us we are seeing it province wide. The chart is from the snow records from the station interactive map which is a BC ENV site. We're the blue line. We aren't off the charts but we are certainly below average.

<https://governmentofbc.maps.arcgis.com/apps/webappviewer/index.html?id=c15768bf73494f5da04b1aac6793bd2e>

2024	Average	Maximum	Minimum
32	143	339	32
	189	344	99
	189	411	0
	41	177	0
	18	72	0
	97	196	18

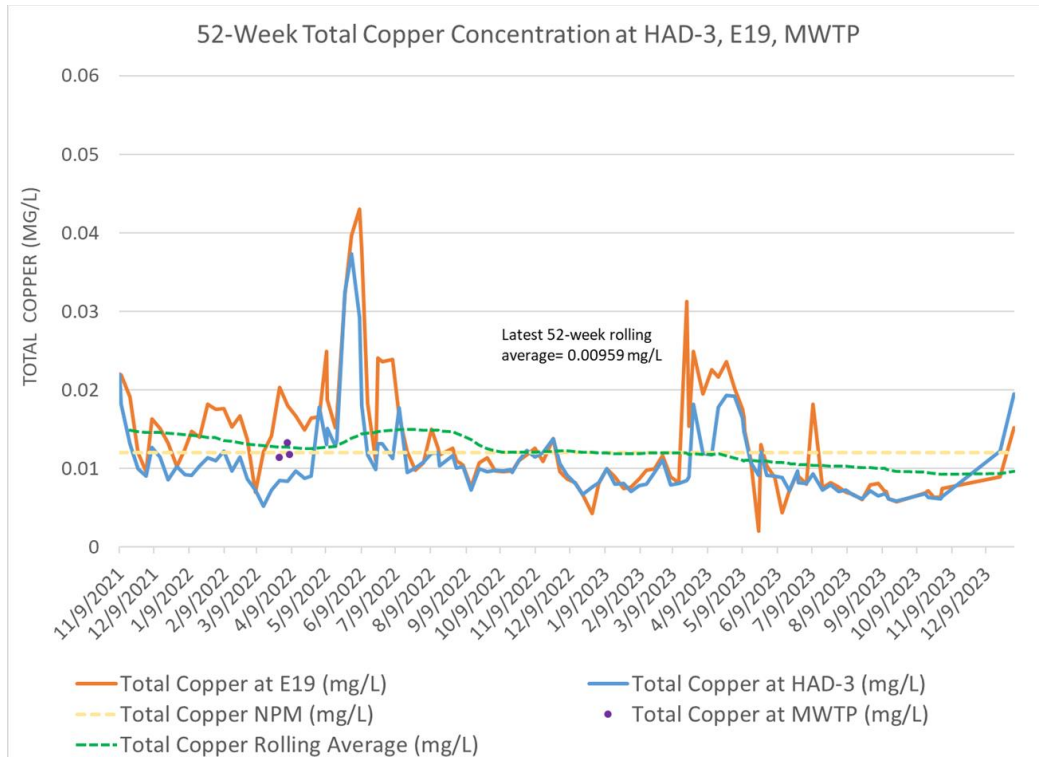
Site Snowpack- Jan 10



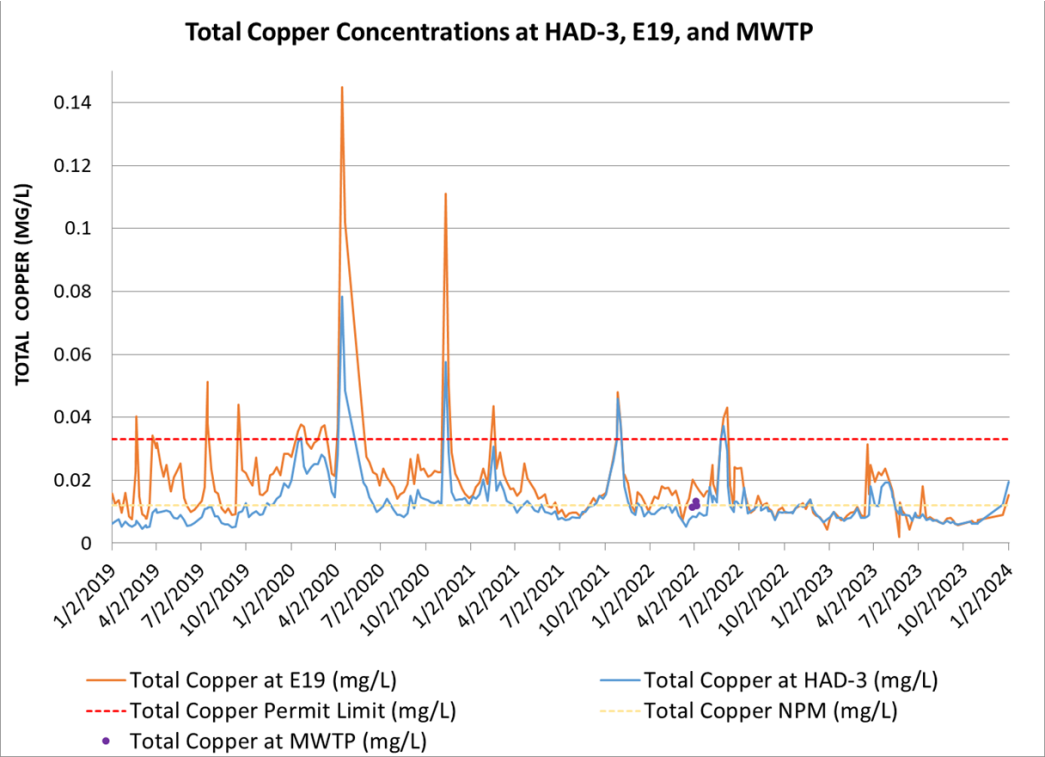


### Water Management Update – Gabriel Holmes

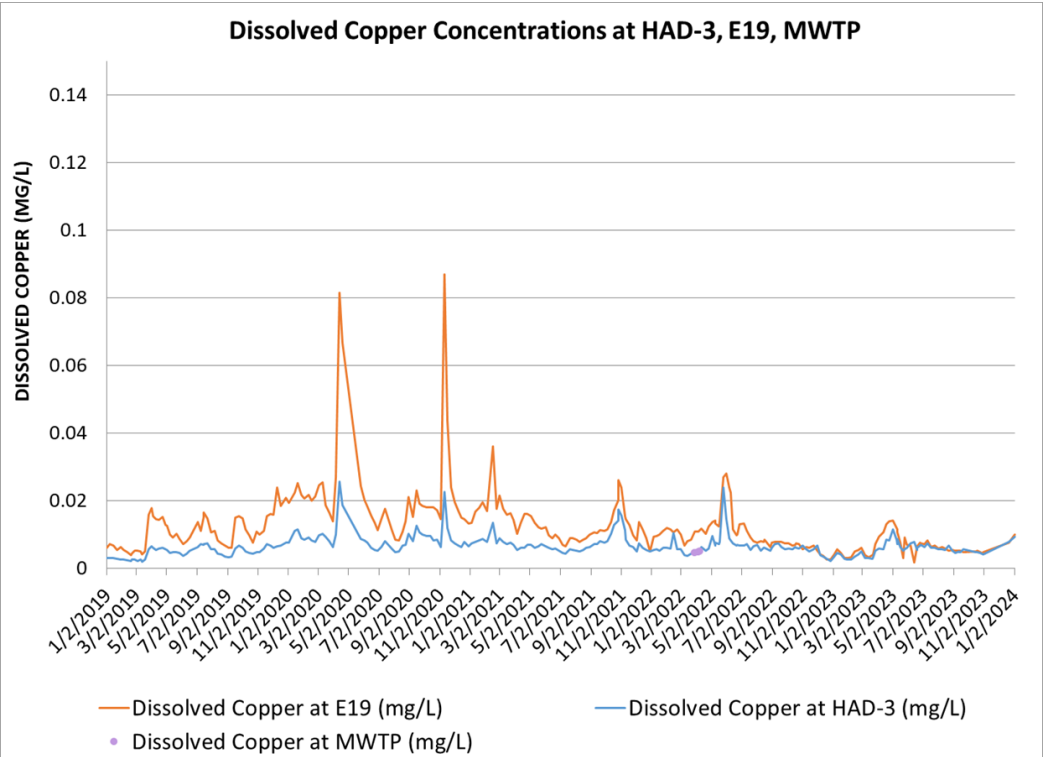
- Discharge/WTP Update
  - Discharge was discontinuous in Q4, there were some down days due to influent supply. We just resumed discharge after a shut down. We were operating Oct 30 and 31 while Quesnel Lake was sampled and then shut it down until Jan 2. We sampled on Dec 21, to ensure that we had amendable water quality for the WTP.
  - The authorized annual average rate of discharge is 29,000 m<sup>3</sup>/day.
  - The maximum authorized rate of discharge is 52,000 m<sup>3</sup>/day.
  - Water in the Wight Pit is being pumped to the mill for processing.



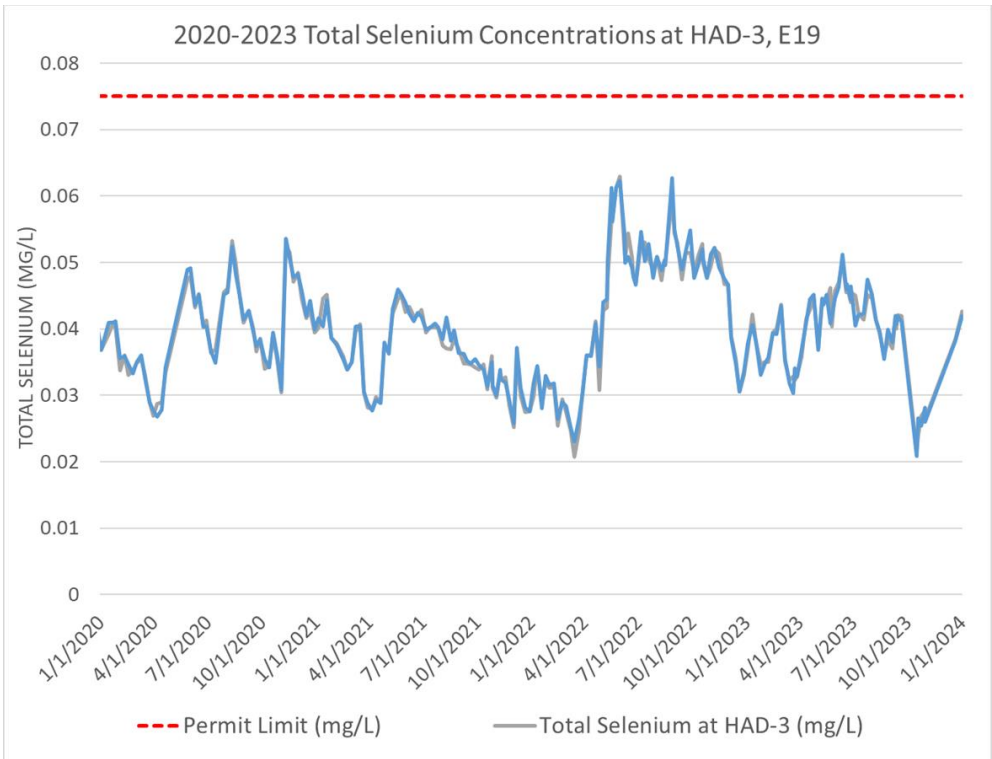
- Here is our 52-week rolling average for total copper at the WTP. The last two samples were over the NPM but well below the permit limit. We will be looking at the source waters and where that copper is coming from. We should be able to identify which ditch it's coming down and what the source is. We aren't overly concerned about it as the 52-week rolling average is well below the NPM target. We can augment that water with water from the TSF as the copper concentrations are very low in the TSF but we are within the operational range that we want to be in with the TSF so we want to keep it where it is.
- WTP Influent vs Effluent Total Copper
  - Copper concentrations have been relatively low over the last couple of years, below the permit limit prior to discharge. We have favorable chemistry coming out of that pipe.



- WTP Influent vs Effluent Dissolved Copper
  - Very low concentrations, similar trends to total copper.
  - The more TSS that we have that we have in the system the more effective the plant actually is.

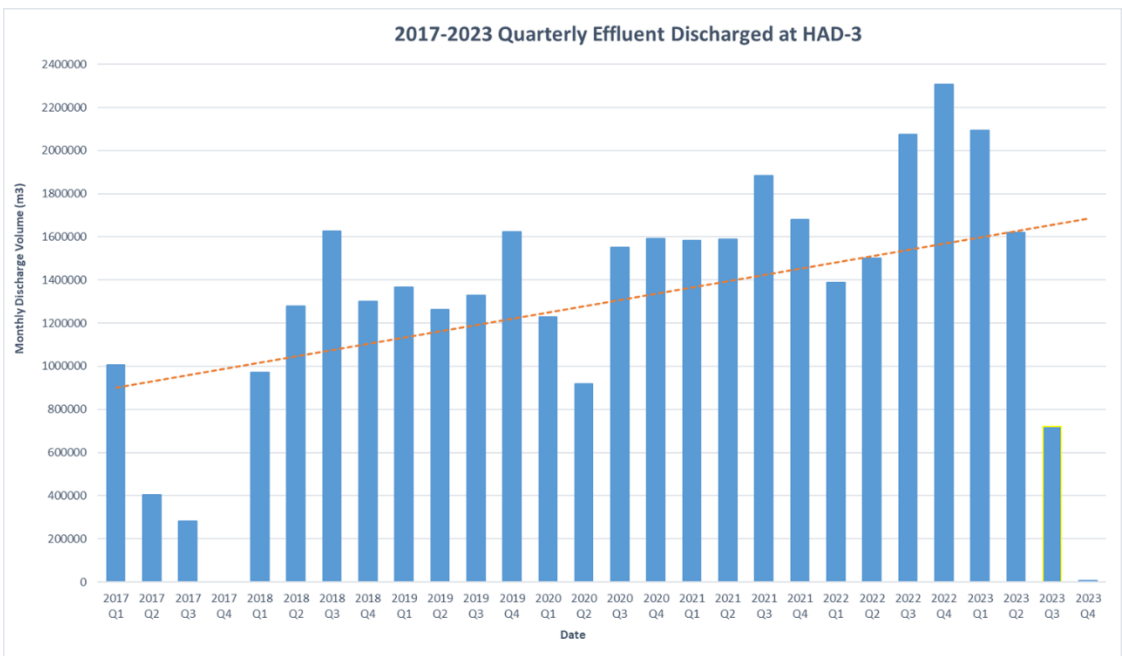


○ WTP Effluent Selenium



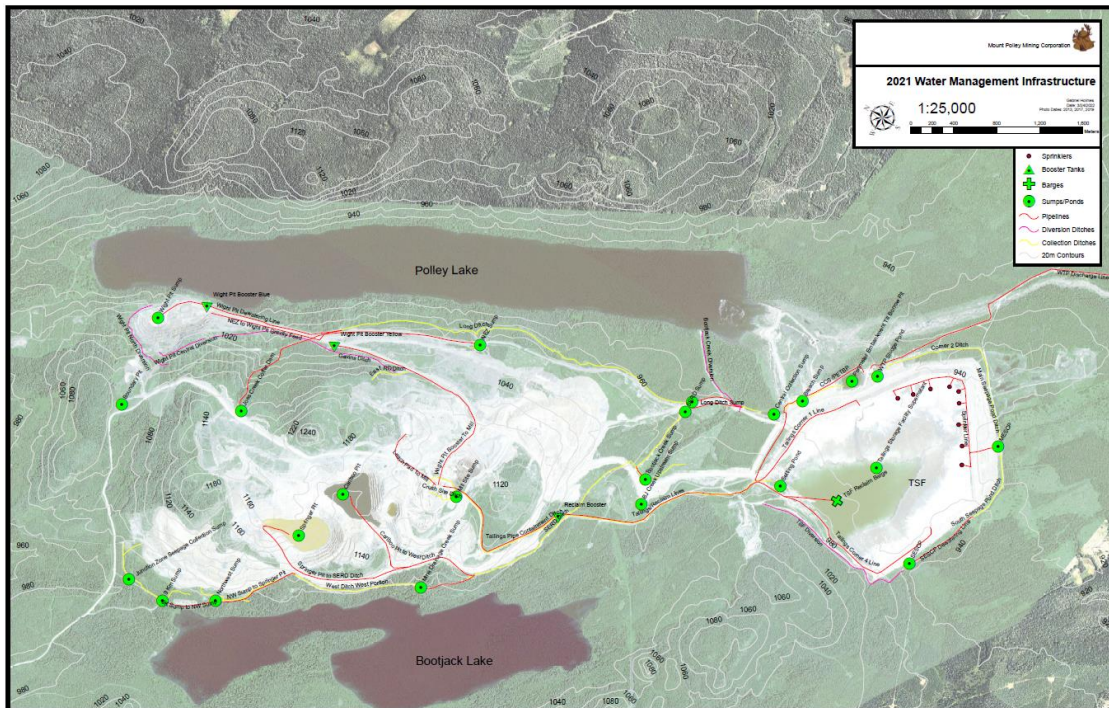
- WTP efficacy in treating selenium is virtually zero. There have been pretty stable selenium concentrations all below the permit limit but we cannot treat selenium effectively with the WTP. There does appear to be a slight trend upward but we will keep an eye on that. As you can see in the graph, the selenium concentrations do vary.

○ 2017-2023 Quarterly Effluent Discharged

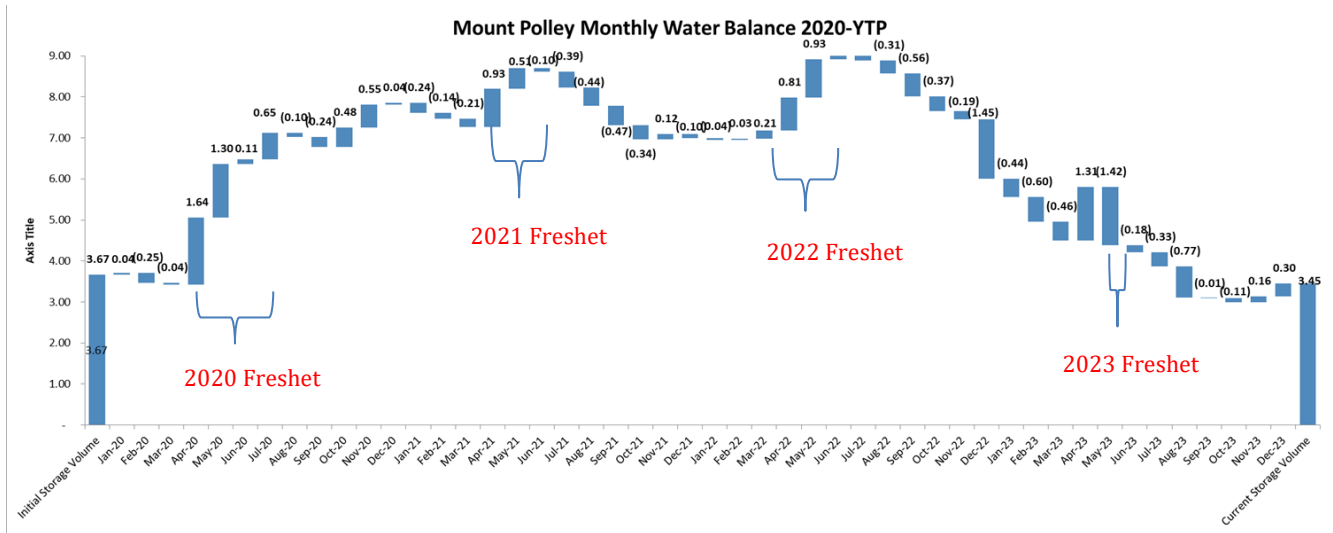




- Discharge has dropped right off in Q3 and Q4 as a result of this ongoing drought and some changes that we are making in our water management infrastructure such as using water from the Wight Pit to run the mill.
- We are currently constructing a pipeline from the Wight Pit to the SERDS Sump which will discharge to the Perimeter Embankment Till Borrow Pond.
- Water Management Infrastructure
  - This map shows our diversion ditches, collection ditches, pipelines, sumps and ponds. These are all locations that we monitor through our contact water sampling. This will be updated in the next few weeks for our 2023 annual reporting. Each one of these elements is absolutely critical to the water management operations that we have. Any one of these things fail and it could result in an unauthorized discharge to the environment. We had an event last year when one of our pipelines froze up. We had an event in 2020 when we had melt and rain and the whole system was overwhelmed. We will keep you informed of any challenges with our water management at Mount Polley. It is an ongoing effort.

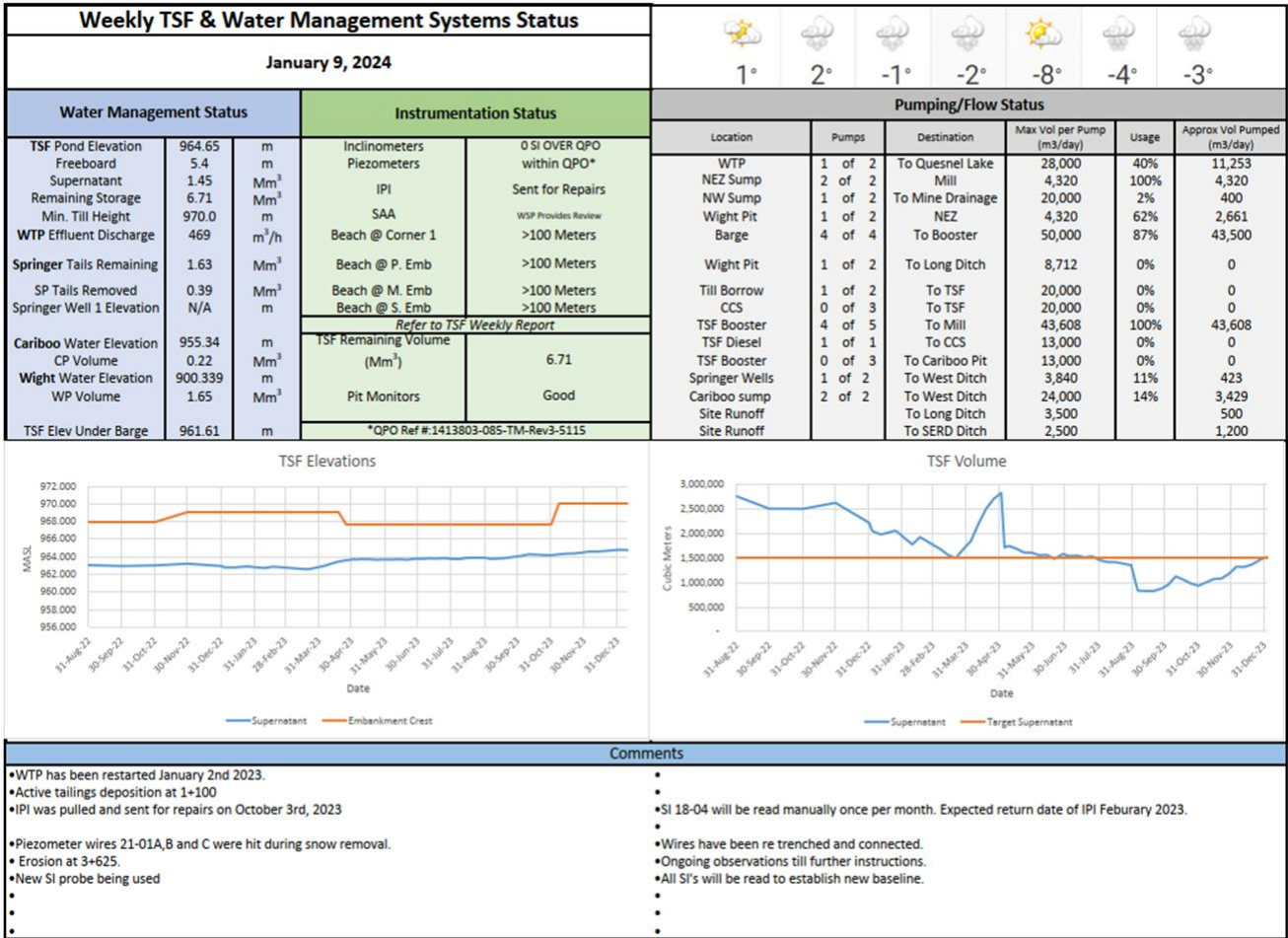


- Year over year water balance comparisons
  - This is a water balance waterfall which shows a 3-year period of our water accumulation over time. You can see the total site water balance beginning in January 2020 (3.67 Mm<sup>3</sup>) until last month. In 2020 we had very high snowpack and we accumulated a lot of water in 2020 and 2021. In 2021 we start to see some decreases month by month. In 2022, we were operating an additional WTP and you can see the last couple columns drop because we had the two plants operating simultaneously. We are pretty similar to where we were back in 2019 but we had a bit of a runaway over those few years where we accumulated more water than we wanted to.

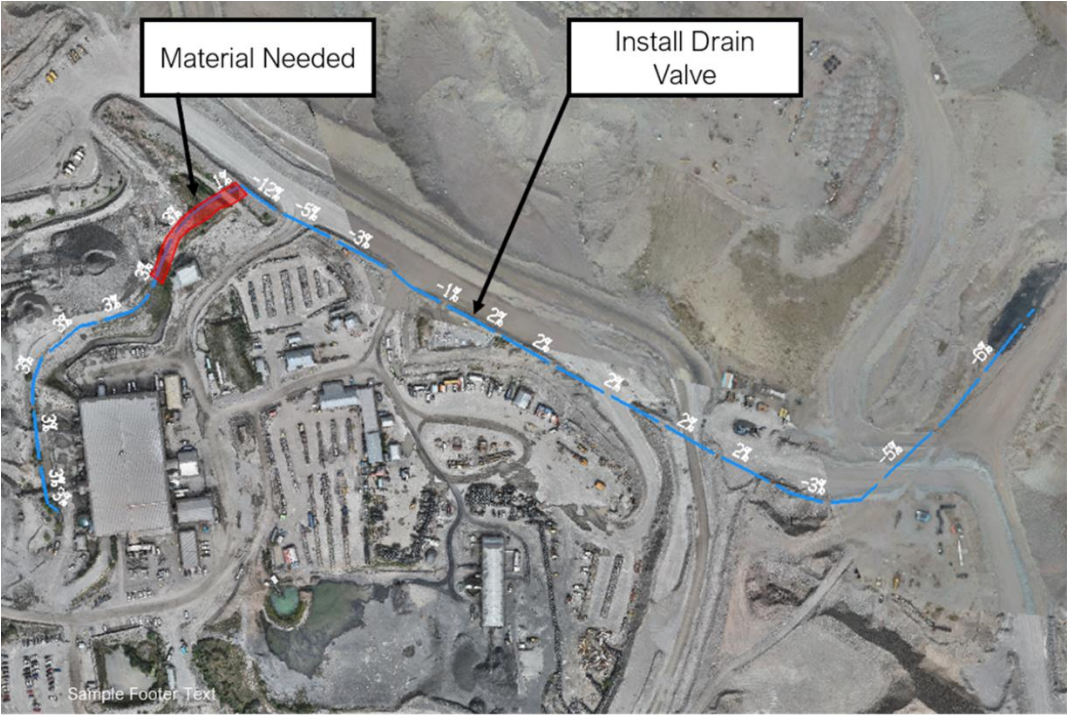


	Volume - This week (Mm3)	Volume - Last Week (Mm3)	Total Change (Mm3)
TSF	1.45	1.52	(0.07)
Cariboo Pit	0.22	0.24	(0.02)
Wight Pit	1.65	1.66	(0.01)
<b>Total</b>	<b>3.32</b>	<b>3.42</b>	<b>(0.10)</b>
Volumes As of	9-Jan-24	2-Jan-24	
	Elevation - This week (m)	Elevation - Last week (m)	Total Change (m)
Springer Well 3 Elevation (m)	0.00	0.00	0.00
Elevations As of	January 9, 2024	January 2, 2024	

- The TSF has 1.45 Mm<sup>3</sup> of water, the Cariboo Pit has 0.22 Mm<sup>3</sup> and the Wight Pit has 1.66 Mm<sup>3</sup> for a total of 3.32 Mm<sup>3</sup>. This is updated on a daily basis. Our instrumentation tech collects all of the relevant survey data, updates the data and provides a weekly summary to the EoR.
- Here is a snapshot of our TSF Dashboard. There is a lot of information on here but essentially, it shows all of the elements that are monitored. If anything was in a concerned state it would be highlighted in the tables. There were some recent upgrades to the TSF surveillance system. A bunch of our instrumentation that is embedded in the dam is automated now and that work is ongoing.



Water Management Infrastructure Upgrades





- Pipeline upgrades: We are constructing a pipeline from the Wight Pit to the SERDS Sump which will enable us to pump water to and from the SERDS Sump to the Wight Pit. From the SERDS Sump water can gravity feed down to the WTP or get pumped into the TSF. We can also pump water from the TSF to the mill. It gives us flexibility in water management.
- NEZ Booster to Mill- Steel piping was upgraded to HDPE
- Reorienting tailings line near TSF- We have to move where it enters the TSF periodically as the dam increases in height

### **Remediation/Reclamation Update – Gabriel Holmes**

- No remedial work was conducted in Q4 2023 and none is planned for Q1 2024.
- Budgeting exercises are completed but the budget has yet to be approved. We do have a couple of areas targeted for seeding. We don't have trees or shrubs sowed yet. We will have to ensure we have the ground ready for planting. That should put us in a monitoring stage for the duration of the project.
- We are implementing our Reclamation Research Plan. We have some areas targeted for resloping and species-specific planting trials and also some soil amendments. We may begin to take biosolids again. We will notify everyone well in advance if we decide to go down that road again.

### **Mining Update – Gabriel Holmes**

- Life of Mine- We have ~8 years of mining and a couple of years of reclamation
- Production mining and milling (pit operations, mill operations, mobile maintenance, mill maintenance, site services, engineering, geology and ore control)- In order for this mine to operate we need to have all of these elements working concurrently. Pit operations are ongoing, but production consistently falls below budget targets. Despite not meeting budget targets for materials moved, concentrate production continues to meet or come close to target.
- Mill availability and recovery have been positive since commissioning in 2022.
- SERDS Co-Disposal- Tailings movement to the SERDS Co-Disposal facility is on track and is anticipated to be complete in March. A NAG cap will be placed on the facility once complete, and the material is available.
- Magnetite Concentrator- Was constructed by JDS in 2014. It didn't run for long before the breach and then went into Care and Maintenance in 2019. MPMC recently purchased the facility and it is 100% owned by MPMC. Magnetite is a mineral and primary iron oxide ore. It produces high grade magnetite that is salable for use in metallurgical coal flotation used for steel making. We have been relying heavily on the previous experience of JDS and their training documents for its operation.
- Canada Critical Minerals Infrastructure Grant- This was announced in December. It is a \$300M grant on a first come first served basis, up to \$50M per project. The proponent has to foot 50% of the bill and the government will foot the other 50% so we are looking at how Mount Polley can benefit from this. The range of applications for the grant is huge and includes everything from prefeasibility work to operations so we are considering things like electrifying some of the fleet. There is information online if you are interested. There are particular considerations if you partner with First Nations or if First Nations want to develop critical minerals infrastructure on their territories.
- Job Opportunities – We are hiring. Operations are in full swing and we are looking for new members to join our team.

- As of January 9, 2024, 323 full time MPMC employees, 218 hourly, 100 salary, 2 belt watch temp contract hourly, 3 temp contract salaried, inactive- 12, women- 65, men- 258
- Terminations- Sept 1-Dec 31, 2023- 35 total, 23 hourly, 12 salaried
- New hires Sept 1-Dec 31, 2023- 55 total, 38 hourly, 17 salary
- Seeking tradespeople, mechanics, welders, millwrights, pipefitters, electricians and carpenters
- Nearing full staffed in the Mine Ops and Mill Ops
- Seeking to fill technical positions, engineers and planners
- Challenges in hiring
- New recruitment campaign will be launched soon through Sedgewick

Johanna Godt (JG): Mount Polley is targeting for those particular roles particularly around trades and technical so Sedgewick will be supporting to implement a campaign using digital marketing on the social media channels as well as a digital ad campaign that will be going live on TV screens throughout Williams Lake and 100 Mile House on screens in airports, pubs and strategic locations like that. That is the first phase of the campaign and we are really hoping to start bringing in the applicants for those technical positions.

### **PLC Questions/Comments**

None.

### **Meeting End 11:15 am**

### **Resources**

PLC SharePoint Site:

<https://imperialmetals.sharepoint.com/sites/MountPolleyPLC>

BC Ministry of Environment Natural Resource and Enforcement Database:

<https://a100.gov.bc.ca/pub/ocers/searchApproved.do?submitType=menu>

BC Mine Information page:

<https://mines.nrs.gov.bc.ca/>

mountpolley.com

imperialmetals.com

[Facebook.com/mountpolley](https://Facebook.com/mountpolley)

Sentinel Hub Playground

[Explore \(sentinel-hub.com\)](https://Explore.sentinel-hub.com)

[Snow Survey Stations Interactive Map \(arcgis.com\)](https://SnowSurveyStationsInteractiveMap.arcgis.com)