



Mount Polley Mining Corporation

an Imperial Metals company
Box 12 • Likely, BC V0L 1N0 • T 250.790.2215

MOUNT POLLEY MINING CORPORATION (MPMC) PUBLIC LIAISON COMMITTEE (PLC) MEETING SUMMARY

Meeting Details

In person Meeting and Conference Call Meeting – General Meeting
General Meeting – Q1 2025

January 9, 2025

9:00 am to 1:00 pm

Meeting held at the Xatśūll First Nation Band Office Gymnasium, 3405 Mountain House Road, Williams Lake, BC

Meeting Called by: MPMC Designated Representation

Meeting Chaired by: Gabriel Holmes

Minutes by: Alicia Lalonde

Member	Present	Call-in	Organization
Aaron Higginbottom			T'exelc - Williams Lake First Nation
Abhirosh Chandran		x	Ministry of Environment and Climate Change Strategy
Alan Egilson		x	Ministry of Water, Lands and Resource Stewardship
Alicia Lalonde		x	DWB Consulting (MPMC)
Alex Gresl			Williams Lake Chamber of Commerce
Ann Godon		x	Ministry of Environment and Climate Change Strategy
Bee Hooker			Big Lake Community
Bill Carruthers			Williams Lake Community
Bill Lloyd	x		Horsefly River Roundtable
Chris Garda			Ministry of Environment and Climate Change Strategy
Christine McLean			Mitchell Bay Community
Chris Swan			Ministry of Water, Lands and Resource Stewardship
Don Parsons		x	Imperial Metals (MPMC)
Doug Watt	x		Likely Resident
Emily Sonnag			Xat'süll - Soda Creek First Nation
Gabriel Holmes	x		Mount Polley Mining Corporation (MPMC)
Jackie Sarginson			MLA Cariboo North Coralee Oaks Office
Jason Raine			University of Northern BC and Quesnel River Research Centre
Jillian Tamblyn			Ministry of Environment and Climate Change Strategy
Johanna Godt		x	Sedgewick Strategies (MPMC)
Kala Ivens	x		T'exelc - Williams Lake First Nation
Kelly Parker			MPMC
Ksenia Kolodka			Xat'süll - Soda Creek First Nation
Leanne Perrich		x	Interior Health
Linda Bartsch			Horsefly Business
Lisa Kraus			Likely and District Chamber of Commerce
Lyn Anglin			Consultant to Imperial Metals (MPMC)
Mathieu O'Leary			MPMC
Maureen LeBourdais			Cariboo Regional District
Micky McIntosh			Likely Resident
Nishitha Singi			T'exelc - Williams Lake First Nation
Richard Holmes		x	Little Lake Community
Steve Hocquard			Horsefly Community
Surinderpal Rathor			Williams Lake Government
Tara Cadeau			Ministry of Energy, Mines, and Low Carbon Innovation
Vicki Bourdrias			Ministry of Transportation and Infrastructure
Victoria Stevens		x	Ministry of Energy, Mines, and Low Carbon Innovation
Walt Cobb			Williams Lake Resident
Yoana Dinkova	x		Xat'süll - Soda Creek First Nation
Guests			
Scott Poirer		x	Ministry of Environment and Climate Change Strategy

Meeting Start: 9:10 am

Roll Call – Introductions and acknowledgements – Gabriel Holmes

- I'd like to acknowledge that we operate on traditional territories and work in partnership with the Williams Lake and Xatśūll First Nations.

Additions to Agenda, and Approval of Agenda – Gabriel Holmes

- As I have indicated in the agenda, we are going to go over the following:
 - PLC Membership and Terms of Reference Review
 - ENV/EMLI Discussion/Compliance Review
 - Permitting/Amendment Applications
 - Environmental Monitoring Update
 - Discharge/WTP Update
 - Water Management Update
 - Remediation/Reclamation Update
 - Mining Update
 - Tailings Storage Facility Update
 - Roundtable Discussion
 - PLC Questions/Comments
 - Next Meeting – April 2025
- Does anyone have additions to the agenda?
 - Addition of discussion on the Communications Plan and Mine Review Committee.
 - Addition of discussion of recent media statements regarding the charges under the Fisheries Act.
 - Addition of a break around 10:30 and 11:00am.
- Agenda approved.

- Conservation Officer Service Statement regarding Fisheries Act Charges Related to Mount Polley:

**Mount Polley Integrated Investigation Task Force Media Release
Charges Approved by Direct Indictment**

The British Columbia Conservation Officer Service, Environment and Climate Change Canada and Fisheries and Oceans Canada have jointly investigated possible contraventions of the Federal Fisheries Act, related to the tailings pond breach at the Mount Polley Mine that occurred in August 2014.

These agencies have been working together as the Mount Polley Integrated Investigation Task Force (MPIITF). A Report to Crown Counsel was previously submitted to the Public Prosecution Service of Canada and the British Columbia Prosecution Service by the MPIITF for assessment of its investigation for prosecution.

The Prosecution Services have now completed their charge assessment review. In total fifteen (15) charges have now been approved to proceed by "Direct Indictment" against IMPERIAL METALS CORPORATION, MOUNT POLLEY MINING CORPORATION and WOOD CANADA LIMITED / WOOD CANADA LIMITÉE for contraventions of sections 35(1) and 36(3) of the Federal Fisheries Act (R.S.C., 1985, c. F-14).

A first appearance date has been scheduled for December 18, 2024, in British Columbia Supreme Court, Vancouver, B.C.

This matter is currently before the courts, no other statements will be issued by the investigating agencies at this time

- Imperial Metals Official Statement Regarding Fisheries Act Charges Related to Mount Polley:

December 13, 2024

Imperial Metals Corporation and its subsidiary, Mount Polley Mining Corporation, acknowledge the charges recently filed under the Fisheries Act in relation to the tailings storage facility breach that occurred at the Mount Polley Mine in 2014. This incident is a significant part of our history, and we have dedicated the past decade to addressing its impacts.

Since 2014, we have invested over \$75 million in remediation efforts, while working in close collaboration with local First Nations. This work has led to significant ecological recovery, including enhanced fish habitats, reforestation, and improvements to local ecosystems. Our efforts have been recognized by industry peers and regulators, including the Jake McDonald Annual Mine Reclamation Award in 2023.

As this matter is now before the courts, we will not be commenting further on the legal proceedings. Our focus remains on maintaining the highest standards of environmental stewardship and upholding our commitment to the communities where we operate.

For more information about the remediation work completed at Mount Polley, please visit our Remediation Q&A page or find further details at mountpolley.com.

For media inquiries, please contact:

Investor Relations
Email: investor@imperialmetals.com
Tel: 604-488-2657

PLC Membership and Terms of Reference (ToR) Review – Gabriel Holmes

- We have some vacancies. We provided a public tour in November and there were a couple of community members from Likely that took interest. Jeff Raymond, former synthetic chemist, took interest so I reached out to him about joining as a Likely community member. I have approached Deborah Portman (ECCC) to join, but I have not received a response. Department and Fisheries and Oceans, I have asked a number of people from that organization but no one has committed. I haven't heard back from the

United Steel Workers. MPMC Representative, we are thinking about removing that since we always have someone from MPMC present. If there is someone that you think could benefit from joining the PLC we have a mechanism in the ToR to do just that.

Member Organization	Allocated Seats	Name	
BC Ministry of Indigenous Relations and Reconciliation	1	Vacant	
BC Ministry of Agriculture*	1	Vacant	
BC Ministry of Environment and Climate Change Strategy (ENV)	2	Abhirosh Chandran, Ann Godon, Chris Garda, Jillian Tamblin	
BC Ministry of Energy and Mines and Petroleum Resources	1	Victoria Stevens, Tara Cadeau	
BC Ministry of Forests, Lands and Natural Resource Operations	1	Alan Eglison, Chris Swan	
BC Ministry of Transportation and Infrastructure	1	Vickie Boudrias	
Interior Health Authority*	1	Leanne Perrieh	
Environment and Climate Change Canada*	1	Vacant	
Department of Fisheries and Oceans Canada*	1	Vacant	
Xatsill First Nation	1	Emily Sonntag, Yoana Dinkova	
Williams Lake First Nation	1	Aaron Higginbottom, Nishitha Singi, Kala Ivens	
Mount Polley Mining Corporation	2	Gabriel Holmes, Matt O'Leary, Don Parsons (Imperial Metals), Lyn Anglin (Anglin and Associates), Alicia Lalonde (DWB), Johanna Godt (Sedgwick)	
University of Northern British Columbia	1	Jason Raine	
Cariboo Regional District	1	Maureen LeBourdais	
Environmental Advocacy Group	2	Christine McLean (Concerned Citizens of Quesnel Lake), 1 seat vacant	
Local communities ¹ - Community Member	1 each	Doug Watt (Likely), Steve Hoqard (Horsefly), Richard Holmes (Little Lake), Mickey McIntosh (Likely), Bill Carruthers (Williams Lake), Walt Cobb	8 Members Total
Local communities - Business Member	1 each	Bee Hooker (Big Lake), Linda Barsch (Horsefly)	8 Members Total
Local communities - Government Member	1 each	Jackie Sarginson, Surinderpal Rathor	8 Members Total
Local communities - Chamber of Commerce Member	1 each	Lisa Kraus (LDCC), Alex Greal (WLCC)	8 Members Total
United Steel Workers	1	Vacant	
MPMC Employee Representative	1	Vacant	
The Interested Public (if determined by the membership of the PLC that additional representation of the public is needed)	1	Vacant	

* These members will be invited to PLC meetings when there are topics relevant to their mandates to discuss
¹ Local communities are defined in the Definitions section - 150 Mile House, Big Lake, Horsefly, Likely, Mitchell Bay, Morehead, Little Lake, Williams

Communications

- We are always asking ourselves if we are good communicators and if we are providing the information that everybody wants. There is always room for improvement.
- It is important that we communicate to the regulators and stakeholders regularly, our doors are always open.
- We are committed to our communications plan.
- We have the PLC, Sharepoint and other websites, meetings, calls and presentations, tours and reporting to convey information.
- Safety:
 - Mount Polley Mining Corporation is committed to providing a safe and inclusive work environment to all its workers, staff, contractors and guests.
 - Initiatives:
 - Quarterly site wide communication meetings- it is a mandatory meeting for every employee and is an opportunity to speak with the employees about what is going on, they were temporarily suspended while the manager was off with some health issues but we will be resuming those in 2025.
 - Regularly scheduled departmental safety meetings (monthly) and Shift Cycle Audits (each department conducts a weekly audit of their work area where hazards and potential hazards are identified and passed onto the cross shift)

- Joint Occupational Health and Safety and Environmental Committee (meet monthly with tours)
- Mine Rescue training weekly
- Safety statistics up to the end of December are included in the table below.

Reportable Injuries/ Incidents		
	MTD	YTD
Lost Time Accident	1	8
Medical Aid	2	16
First Aid	3	47
Reportable Incident	0	13
Spills – Reportable (BC-Env)	0	0

- The MPMC Community Initiatives Committee will continue with community contributions in 2025 and will be committing to many of the same organizations as in 2024.
 - To date: Fishing derby, Mining for Miracles, Heavy Metal Rocks, indoor rodeo, Williams Lake stampede, performances in the park, Cedar City museum, MPMC Family Day, Big Lake Volunteer Fire Rescue, Speaking our Truth Pow Wow, Father’s Day Pow Wow and Orange Shirt Day
- Energy Management
 - Imperial Metals’ Mount Polley Mining Corporation (Mount Polley) is a participant of BC Hydro’s Industrial Strategic Energy Management program. The goal of the program is to strengthen the organization’s energy management and carbon reduction practices through developing and implementing a long-term energy management strategy. As a part of this initiative, Prism Engineering, sponsored by BC Hydro, facilitated an Energy Management Assessment (EMA). The EMA was conducted across two, two hour in-person sessions on November 20-21, 2024. MPMC will be establishing an Energy Team to focus on energy management at the mine on an ongoing basis.
 - That Energy Management Assessment focused on 4 areas of influence as described in the table below.

Area of Influence	Description
Business	Overall energy management organizational structure, strategies, and plans.
Process	Company's ability and actions in implementing energy management plans and targets.
People	Extent to which people are responsible and accountable for energy management.
Technology	Technologies and projects that have been identified, funded, and put in place to achieve savings.

- The overarching goal is to reduce energy consumption (all sources of energy). We want to transition away from some of our hydrocarbon burning equipment to electricity. We are one of the larger consumers of electricity in the province and that’s why BC Hydro is interested in

partnering with us to develop a strategic energy management plan and see about different opportunities for electricity such as solar and wind potential at the mine site. The energy team will be comprised of management individuals at the mine site and professionals from Prism Engineering. I have been asked to be part of the team and will provide periodic updates on this.

ENV/EMLI Discussion/ Compliance Review

- Let's open up the floor to ENV and EMLI. Do you have anything to bring to the committee's attention regarding compliance from a regulatory perspective?
- GH: Victoria, can you talk about the recent division of Ministries?
- Victoria Stevens (VS): We were split between energy and mines so we are now the Ministry of Mining and Critical Minerals. Our minister is Minister Brar. He came from the trade portfolio. I'm not sure what the ministry is called where energy went to.
- GH: Did you prepare anything for compliance review?
- VS: I haven't prepared anything; I will take a quick look into the file and we can circle back.
- AG: On the compliance front, my authorizations team that is responsible for administering this permit, we do not do the compliance, that is the compliance and enforcement branch but they have done two recent file reviews in the fall. There were two inspection reports that were released. People can look on the NRS website if they want to take a look at those. The two inspection reports covered the period between the last two permit amendments so between February 2020 to December 2022 so a lot of what they are reporting on is probably old news for the PLC. There were two warning letters that came out of those.
- GH: We did discuss those reports at our last meeting.
- AG: There is a third review planned that will cover the period between the last permit amendment forward. The other piece of news is that I am retiring from the MoE and public service in two weeks. I will be around part time in February and March. I am transitioning the file over to Scott who is a senior EPO.
- GH: Congratulations! I hope that transition goes well.
- AG: We are working on the application review. We are in round two. I am hoping to get most of that done but I will transition that over to Scott. Just to remind you that there is a report due at the end of January in Section 2.11.1 of the permit, BAT Assessment. That is a study plan that details bench and pilot scale testing. It might have been missed last year.
- GH: We are on it this year.
- Scott Poirer (SP): I am a senior EPO with the MoE. I have been working on the Cariboo Gold and Gibraltar files so I am familiar with the area and look forward to working with you in the future.
- DW: Congratulations, Ann. There is also a report due every 6 months on discharge alternatives per Section 2.11.4 of the permit. I have expressed to you and Mount Polley that there has been very little work done on alternative discharge strategies. That should be worked on steadily through the operations phases. I am very concerned about quality of the lake. Scott, welcome aboard. Please feel free to contact me anytime.

- AG: We are aware of that and share that concern. We are looking into that as part of the application review.
- GH: That report you are referring to is the Progress Report that we produce every 6 months. The latest one was submitted on the 31st of December. We haven't progressed a lot with the semi passive and passive technology development. We have a few things in the works like saturated rock fill and our constructed wetland treatment system and of course our water treatment plant but we did present some information on those BAT technologies in 2024. Once we receive the new plan from WSP we can parse out some of the information and share it with the PLC.
- Abhirosh Chandran (AC): The CEMP is still with the decision maker. That's all the information I have to share.
- VS: The most recent inspection was done back in August and was discussed at a previous meeting. We are starting inspection season planning. One thing to note, with inspection reports it used to be slow going posting them onto public facing websites because they would have to go through a HARMS review to redact any employee names but last summer, we adopted a new policy on how we write inspection reports so they can basically be posted immediately. Hopefully the policy is speeding up how quickly inspection reports are posted. It does mean that sometimes the way things are phrased is different.
- GH: With regard to those inspection reports, some of them say within 7 days, some within 15 days of the response date. So, our responses will be posted as well. This is the case for every permit holder in the province.

Permitting/Amendment Applications – Don Parsons (DP)

Construction & Permitting Activities		2024						2025					
		Resp	Jul	Aug	Sep	Oct	Nov	Dec	Jan	Feb	Mar	Apr	May
Mine Site Construction													
Phase 5 NAG Borrow Mining > 1120m	RT												
Phase 5 Mining - continued	RT												
TSF Construction < 970m													
Footprint Preparation	MO												
Reslope Downstream Embankments	MO												
Buttress Extension	MO												
TSF Construction > 970m													
TSF Lift (970.0m - 974.0m)	MO												
Water Management Infrastructure	MO												
Proposed Permitting Path													
M200 Application - TSF 970m to 974m	DP/MO												
Joint Application - LoM Extension	DP/MO												
M200 Application - TSF 974m to 987m	DP/MO												
EoR / QP Deliverables													
TSF 987m Design Report	GP												
EoR / QP / Responsible Person													
RT - Richard Tuohey													
MO - Mathieu O'Leary													
DP - Don Parsons													
GP - German Pizarro/Sophie Bainbridge													

Legend

- Permitted
- None Permitted Work Scheduled
- Construction Halt Due to Winter
- Permitting Activities

Permitted
None Permitted Work Scheduled
Construction Halt Due to Winter
Permitting Activities

- We have been mining up in Phase 5 in the NAG borrow above the 1120 m bench. Anything in green are permitted activities and anything in yellow are Ministry approvals or permits. We need to continue beyond a certain date so the end of February we will be mining below 1120 m in Phase 5 Springer Pit. In

order to do that we would need a permit approval. With the slowness of our permitting effort so far, we expect we are going to need some further authorization to go past March, a permit amendment or Notice of Departure approval. Down at the TSF, we are working below 970 m; we are resloping embankments, adding to the buttress, that is a permit activity and we will be continuing that all through 2025. To go above 970 m to store additional tailings, we have an interim raise planned. That would be to add an additional 3 m to the dam in 2025 and another meter plus in 2026. Right now, that is not a permitted activity. As you can see, the blue lines represent non-freezing periods so construction can't happen in terms of addition of additional till and things that need compaction. In April or May, we will start adding till to the top of the dam. We would need some kind of approval from the Ministry to continue that activity. So, we have two things in front of the Ministries right now; a M200 application amendment to add material to the dam (970 m to 974 m) and we have the joint application in front of both Ministries to extend the mine life and to do that we need a permit also. At some time in the future, once we look through the site investigation information gathered over the last 2 years, we will be looking to raise the dam from 974 m to 987 m. There are three things on the go right there. As far as the Springer expansion components for the life of mine extension there are a number of things that would happen as we move forward. We would add material to the NW PAG Stockpile, we would expand Springer Pit and Cariboo Pit with the Phase 5 pushback that we've started as a NAG Borrow and there is the SERDS Co-Disposal Extension. That's where we will put the NAG waste and of course there is the TSF build above 970 m and to extend the mine to 2031, we would need to extend the Quesnel Lake discharge period from our current permit of June 2025 to during the life of the operation to 2031. We are also evaluating the NAG:PAG ratio that we use in our mining to use 1.6 as a neutralizing potential vs acid potential ratio in splitting of the PAG and the NAG materials. Those are what we are looking at under the life of mine plan and the three permitting paths to get there.

- Permitting Action Items

- Joint Permit Amendment Application- LoM Plan (M-200 and PE11678)

- Updated Application Document in Response to Comments and RFIs

- Springer Pit Expansion Application (Nov 26, 2024)

- Includes all information that the Ministries have requested

- Interim TSF Lift to 974 m & Springer Expansion: Material Alterations to Mount Polley's Environmental Assessment Certificate (EAC)

- We have been working on a report with the EAO. This report will address all of the things that would be included in an environmental assessment and will be sent off in the next few days.

- Environmental Assessment Office meeting scheduled in Victoria, Thurs, Dec 12

- Application Component: Interim TSF Lift to 974 m

- MPM to provide: M-200 permit amendment draft and permitted mine area

- Application Component: Springer Expansion Project

- Engagement Report comments rec'd - RFI for some engagements

- Springer Pit ITT updated with geoscience responses

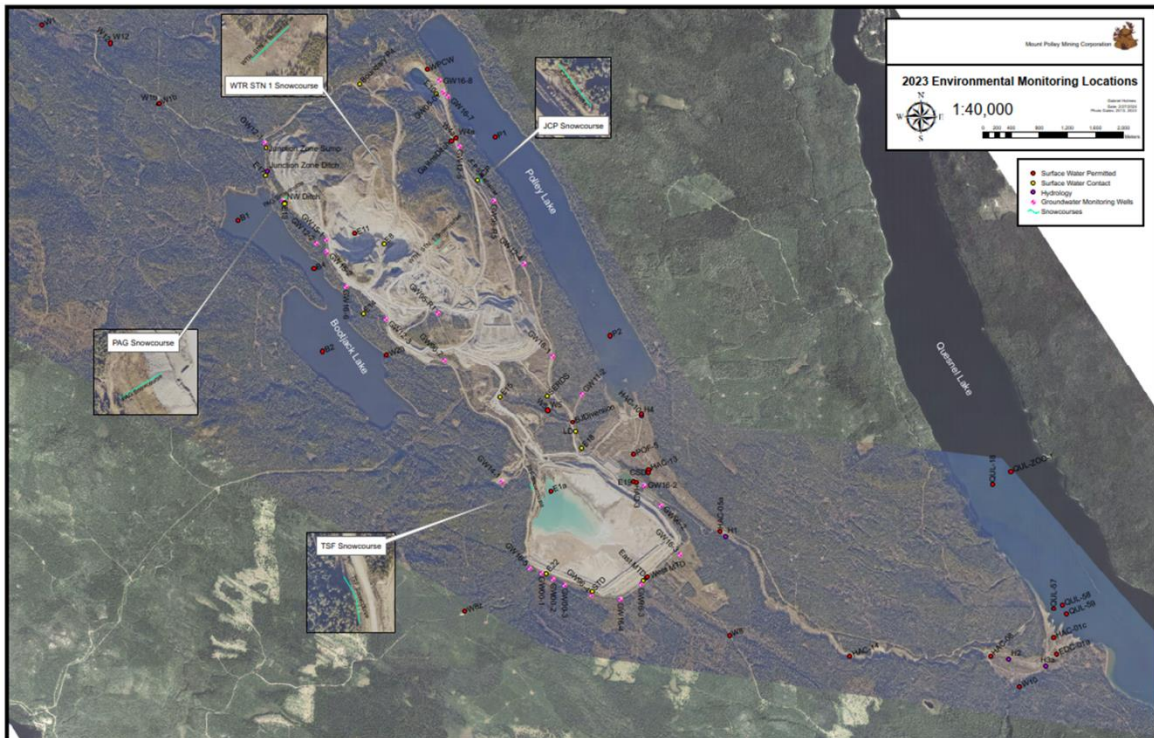
- Deliverables: Reclamation Liability Cost Estimate

- Permit Amendment Application – TSF 974 m to 987 m
 - TSF to 987 m Design Report in progress- (expected Feb 2025)
 - Permit Amendment Application – submit Q1 2025

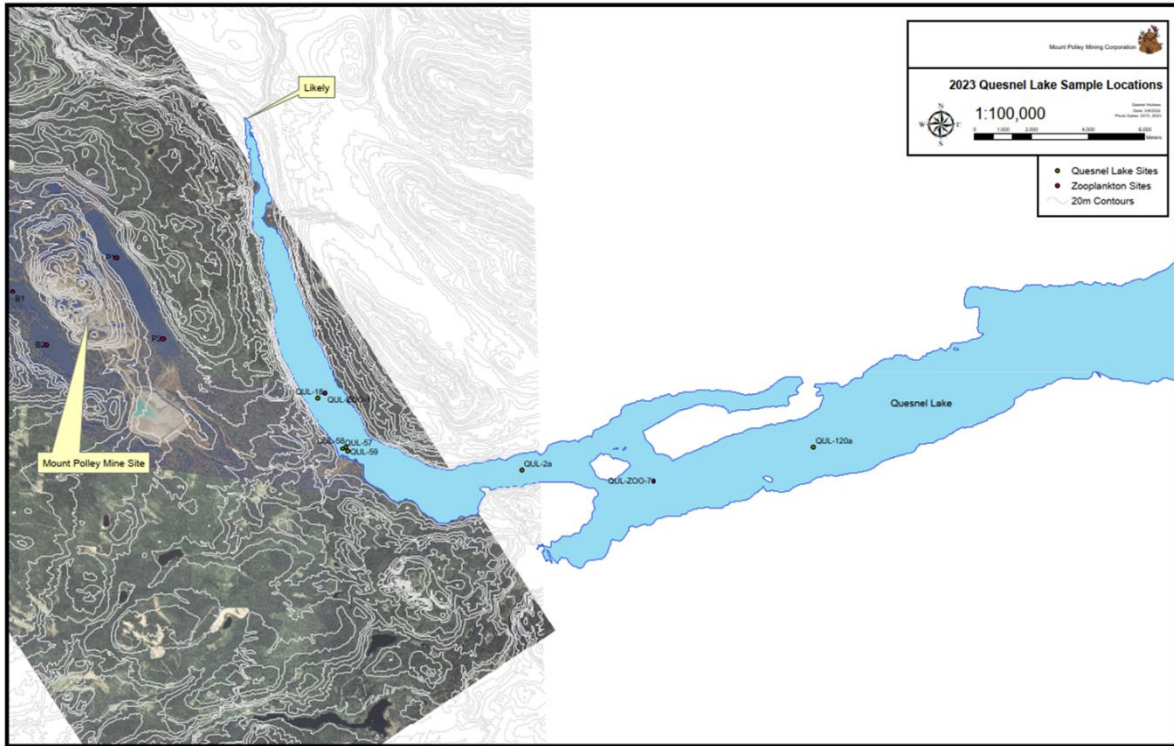
Environmental Monitoring Update – Gabriel Holmes

- Waste Management
 - We generate a lot of waste at a facility such as this and it is important that it be disposed of in a responsible fashion.
 - We have a permitted landfill (under the *Environmental Management Act [EMA]*) on site and have many recycling initiatives underway.
 - We are all responsible for our own waste.
 - Clean up and proper disposal of waste is part of our job.
 - Applicable regulations:
 - *EMA*
 - Overarching document that governs all authorizations and prohibitions
 - Provides general provisions and regulations
 - Outlines compliance, and offences and penalties
 - Hazardous Waste Regulation
 - Waste piles, spills, storage/transportation
 - Ministry of Environment Permit PR 14590
 - Landfill, cardboard/paper recycling, food (putrescible waste, scrap metal)
 - We have independent management waste streams for: food waste, drink containers, paper, cardboard, 5-gallon pails, etc.
 - GFL Environmental is the service provider for hazardous and non-hazardous waste, they take our waste oil, rags, etc.
 - I put together a reference guide with guidelines from GFL, Environmental 360, operational instructions from our site, etc. to assist with waste management that will be put into all lunchrooms and available to all employees at the mine site.
- Recent and ongoing monitoring activities completed in Q4 2024:
 - When in operation, weekly Water Treatment Plant (WTP) water quality sampling including monthly/quarterly/semi-annual toxicity sampling
 - Monthly water quality sampling at Hazeltine Creek including selenium speciation
 - Monthly and quarterly water quality sampling of surface and mine affected waters including groundwater and mine site seepage- we did conduct our fall seep sampling survey; it is an important dataset to understand water chemistry changes that occur onsite

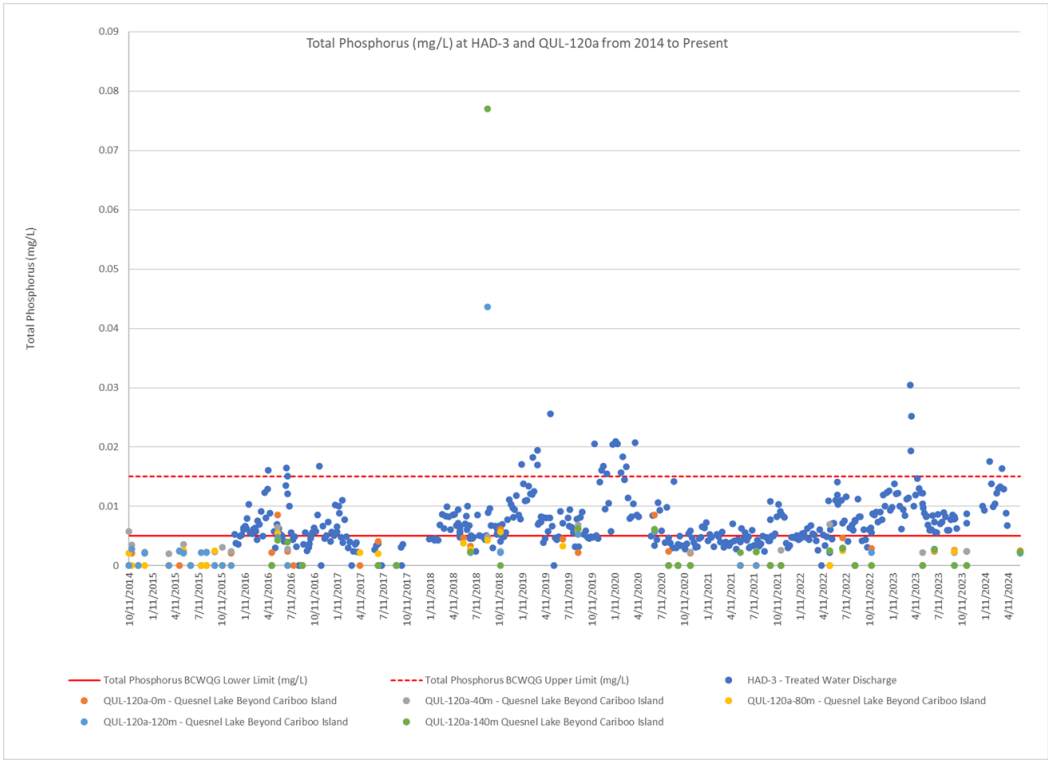
- Lake monitoring including fish tissues- we opted to postpone our fish tissue sampling until late in the season (late October) because in 2023 we were unable to get a scientific permit to gill net fish, and it interfered with salmon migration
 - Wildlife monitoring, photo interpretation- we have 40 wildlife cameras set up around the mine site and reference areas capturing small and large wildlife species
 - Microbiological monitoring (coliform/E.coli)- in the areas of the mine where we have workers interacting with tap water (in our dries, kitchens, etc.), if we get a result that is above the detection limit, we report it immediately to our Environmental Health Officer at Interior Health
 - Water quality sampling and monitoring of Springer, Cariboo and Wight Pits (end-of-pipe)- limnological profiling in Wight Pit, not a lot of water storage in the Springer or Cariboo pits, just small sumps to manage surface water and facilitate mining, the Wight Pit is a small pit lake
 - Data interpretation- ongoing
 - Monthly/quarterly site inspections including waste management- we inspect water management infrastructure monthly, and there is a position that is dedicated to that, our pump watch personnel that drive around everyday and inspect that infrastructure
 - 2023 CEMP review underway
 - Reporting- Monthly, quarterly and annual reporting requirements. We have reports for ENV, EMLI and Interior Health
- This is a map of our monitoring locations around the site and our snow courses where we monitor snowpack. This map is included in our annual report. I update it annually.



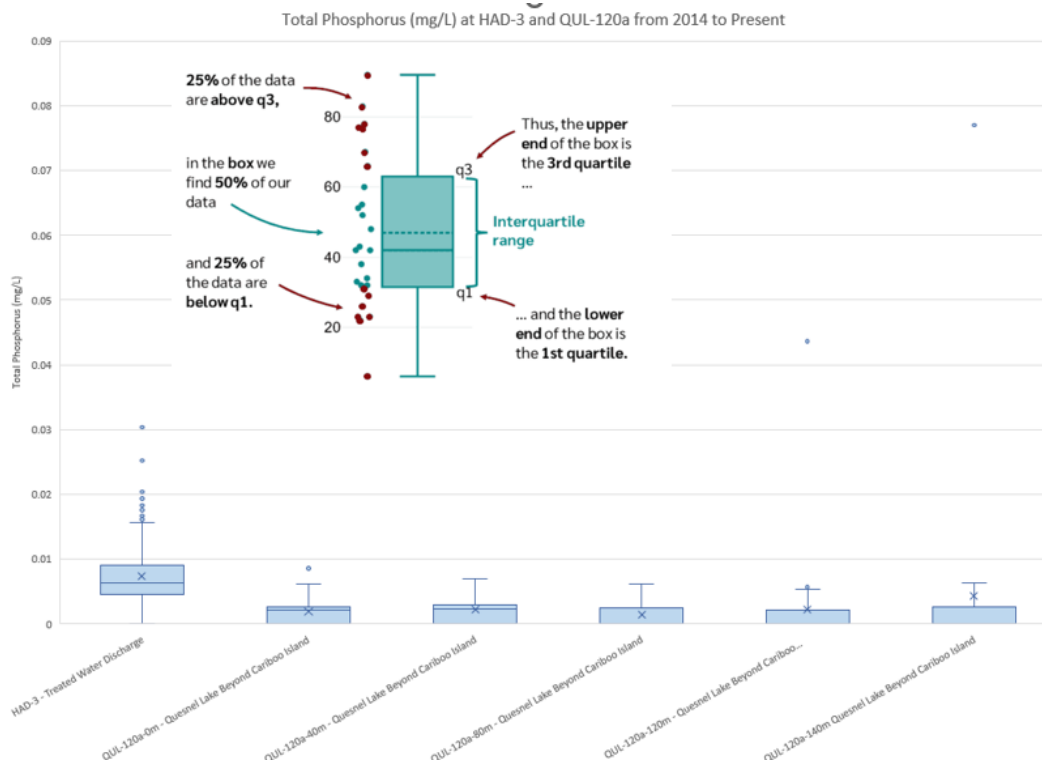
- This is a map of our Quesnel Lake monitoring locations



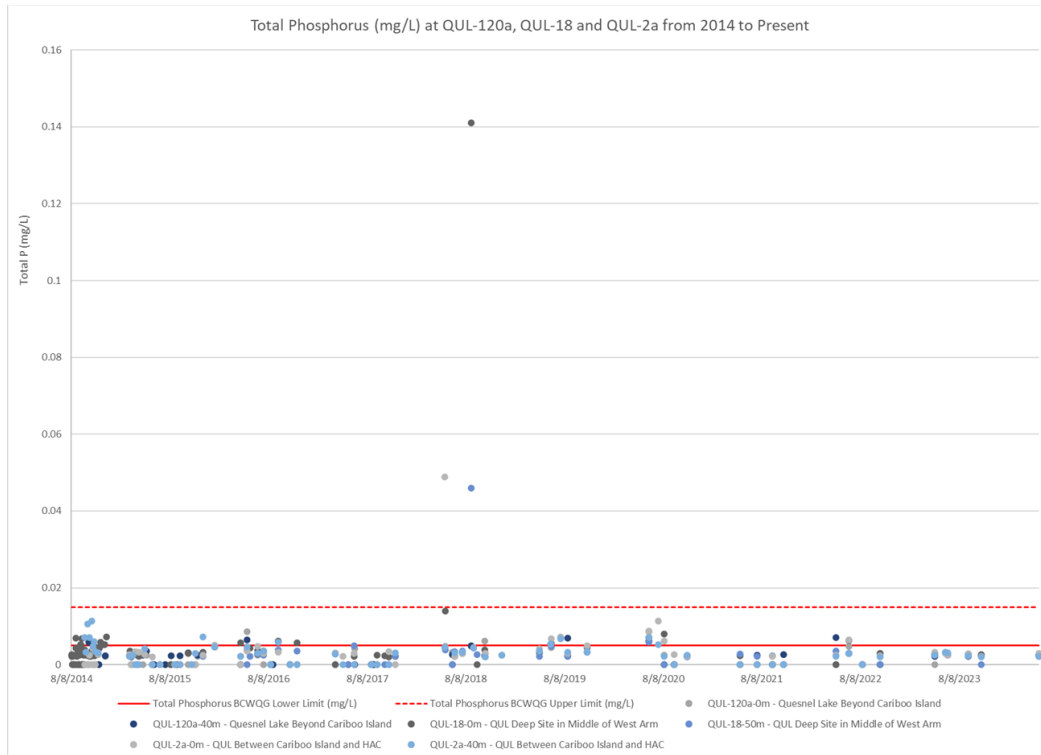
- These are the charts presented in the Q4 meeting but it was suggested that these be shown as scatter plots.



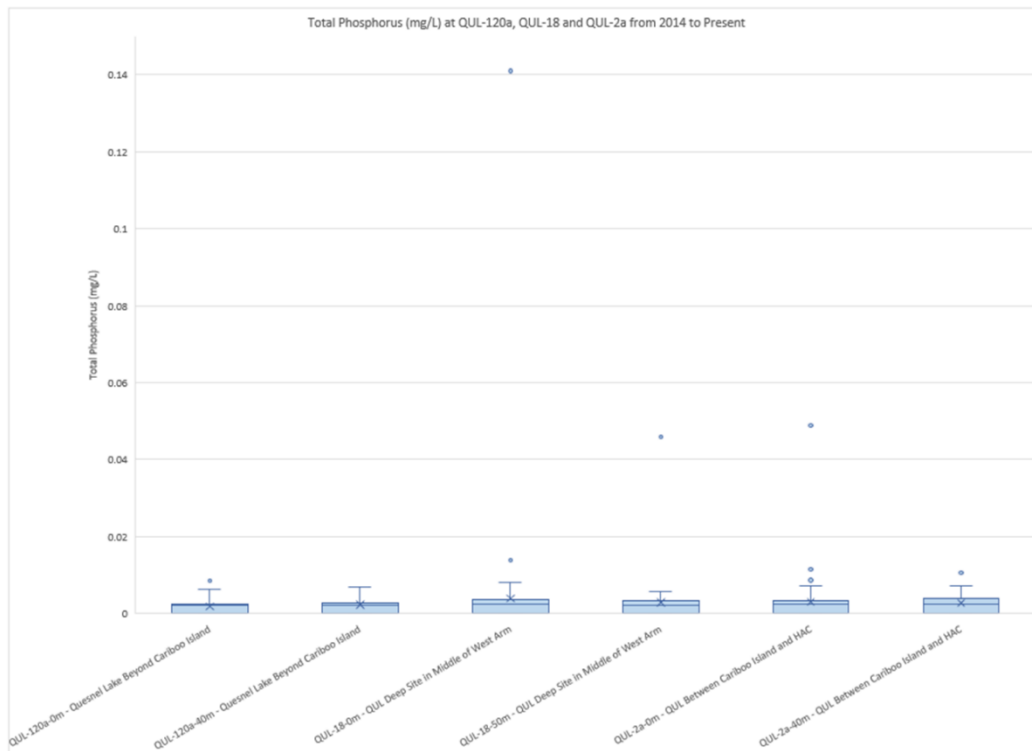
- We have included all outliers in the data so it makes the charts a bit messy. The range in concentrations often compresses where the bulk of the data is. This is QUL-120a at surface, 40m, 80m, 120m and 140m compared to the discharge at our water treatment plant. Generally speaking, total phosphorus concentrations are very low in the main body of the west arm upstream of Cariboo Island. The concentrations are generally lower than the lower BC Water Quality Guideline (BCWQG). You can see the spread of phosphorus data from HAD-3 within that BCWQG range with some extending below the guidelines and a lot of it below the guidelines.

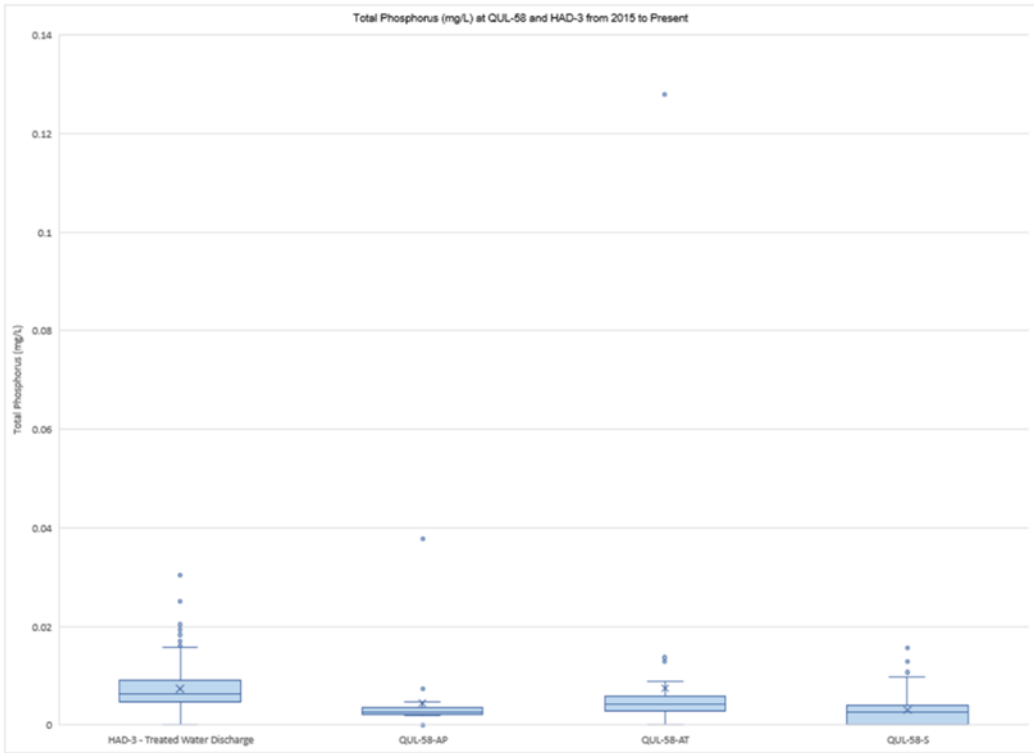
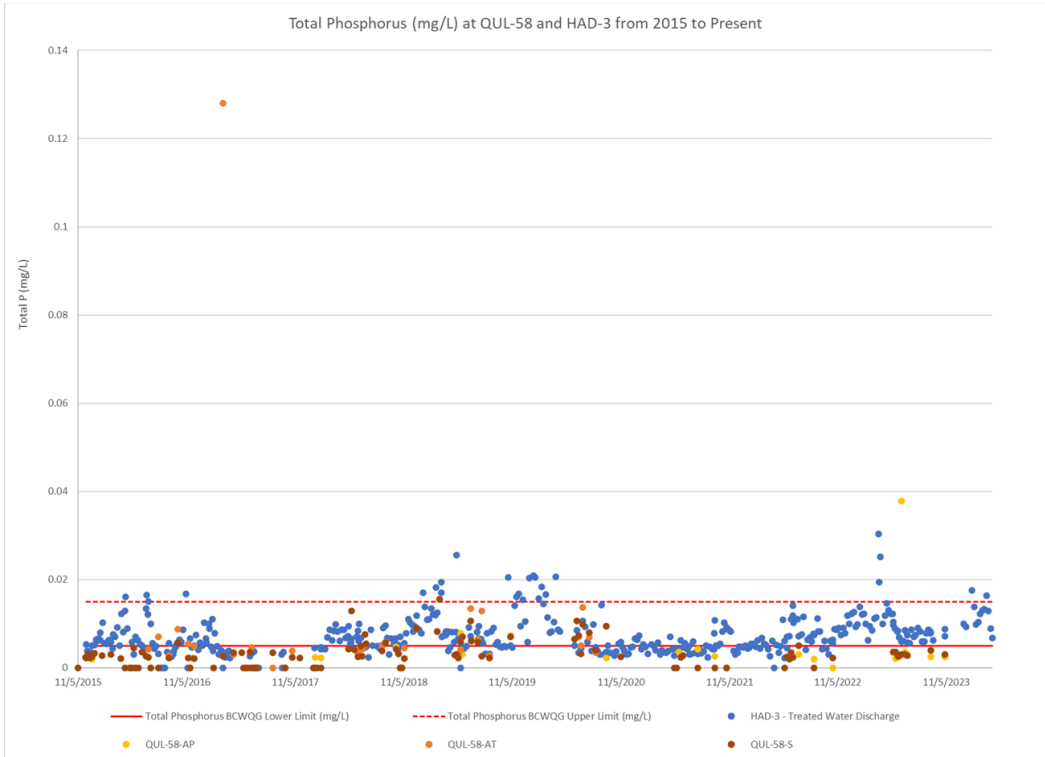


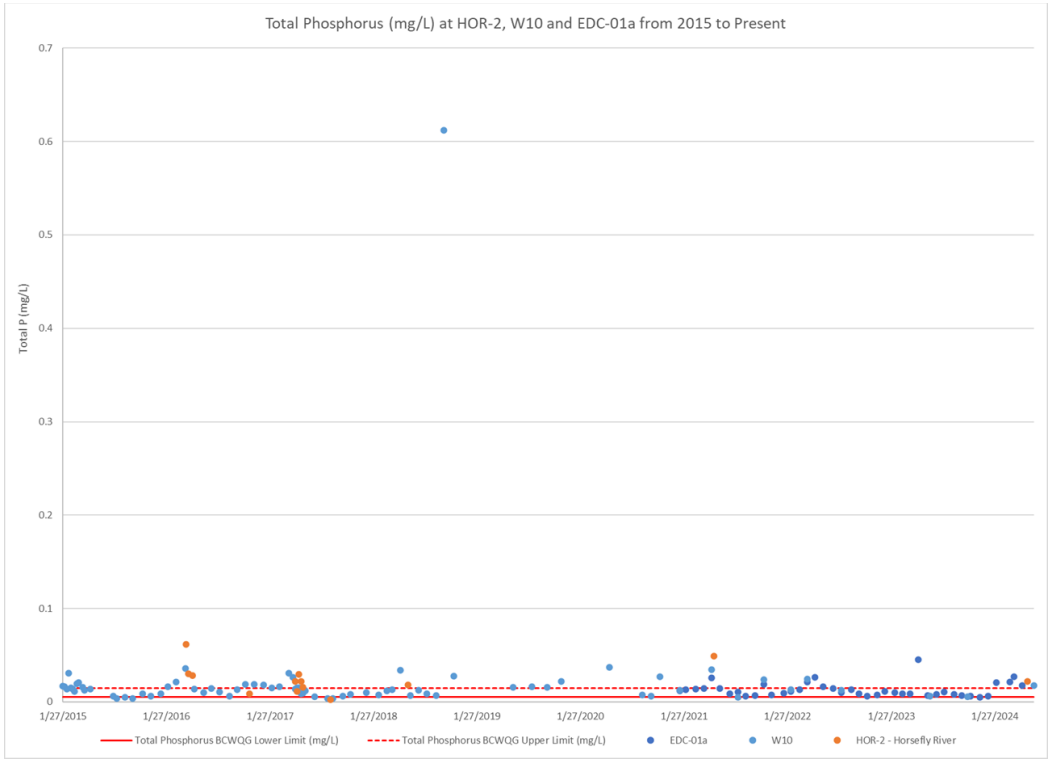
- Box and whisker plots were also suggested. For those of you who aren't familiar, 50% of the data is within the box, the other 50% is outside the box. It shows the spread of data and the dots you see are the outliers. This is the same dataset shown in the scatterplot is shown in a box and whisker plot. The "x" is the mean and the line is the median.



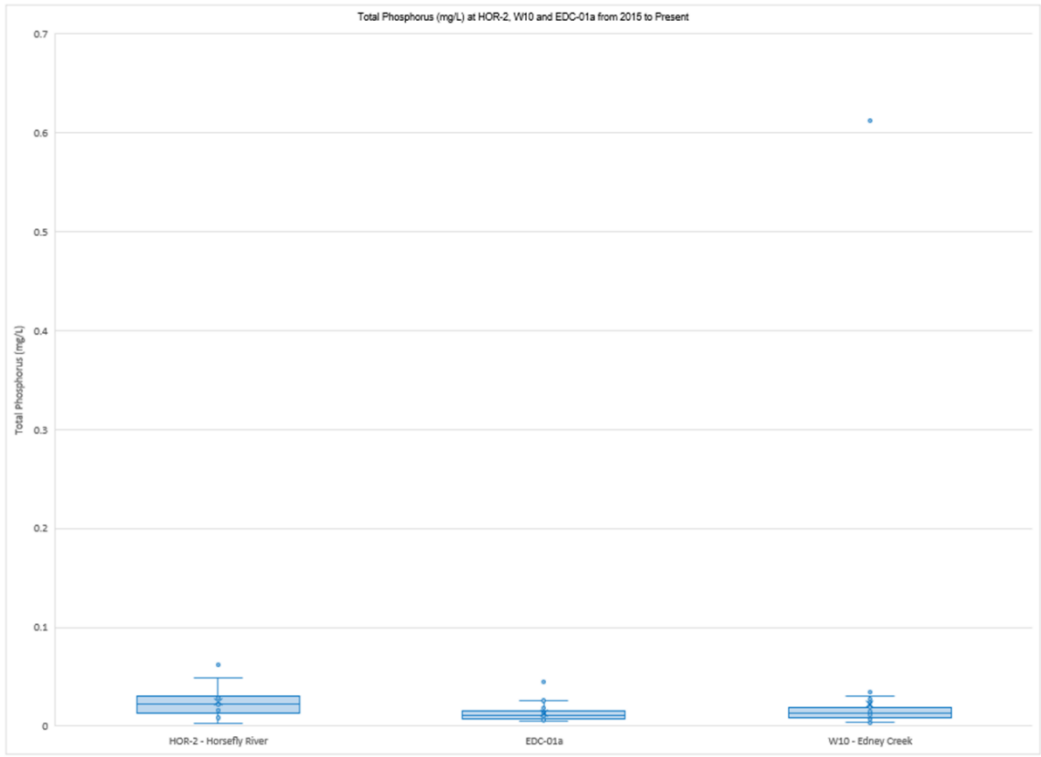
- Total phosphorus at QUL-58 (100m from the diffuser ports in the bottom of the lake that come from our water treatment plant) and HAD-3 (discharge at the plant end-of-pipe), AP is above plume, AT is above thermocline and S is at the surface compared to HAD-3. Total phosphorus at QUL-58 is generally below the lower total phosphorus BCWQG.





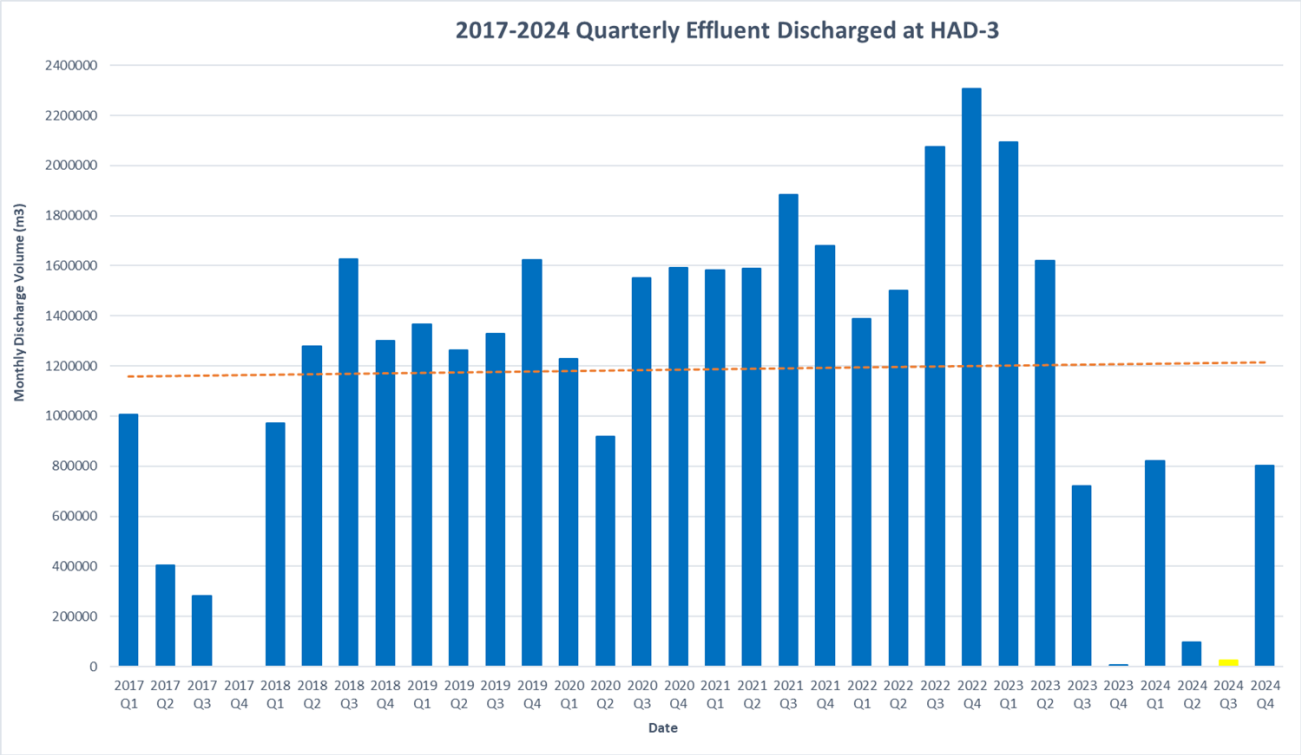


- Total phosphorus at HOR-2 (Horsefly River), W10 (in Edney Creek underneath the bridge outside of the area affected in the dam breach) and EDC-01a (below the confluence of Edney Creek and Hazeltine Creek before it enters Quesnel Lake)
 - This is another chart that gets distorted because of this outlier. We can remove that outlier from the chart going forward, there no notes provided from field team regarding this data point.

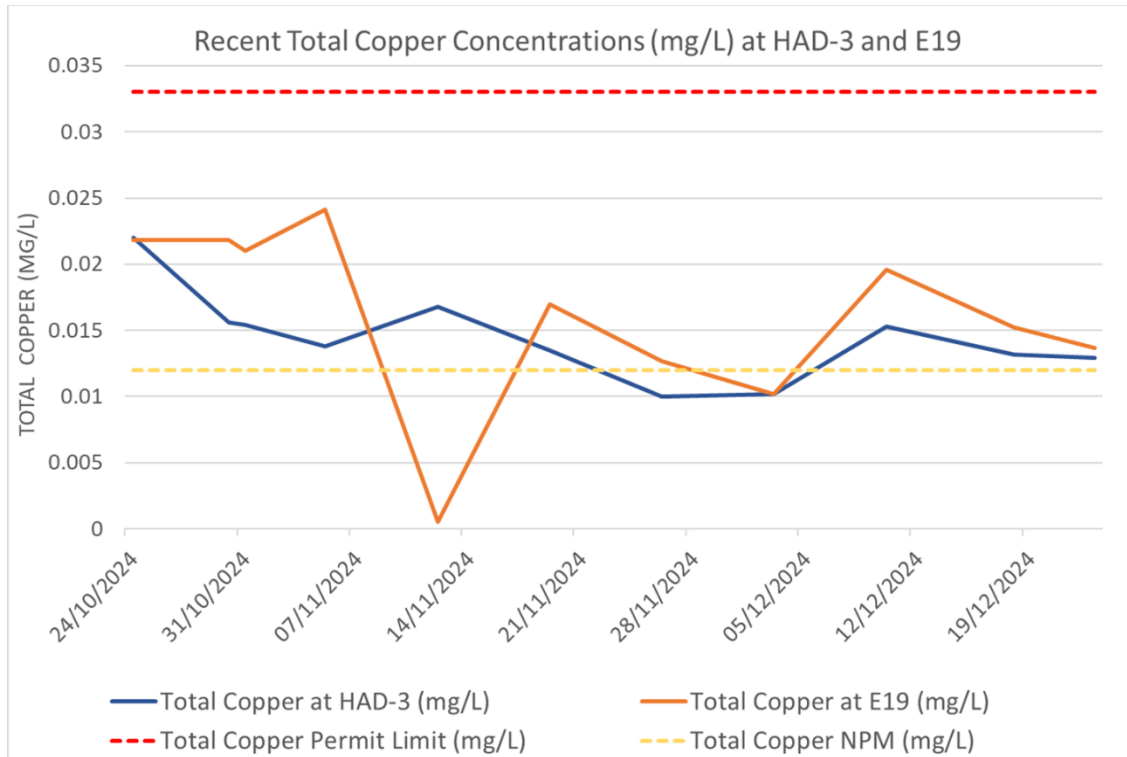


Water Management Update – Gabriel Holmes

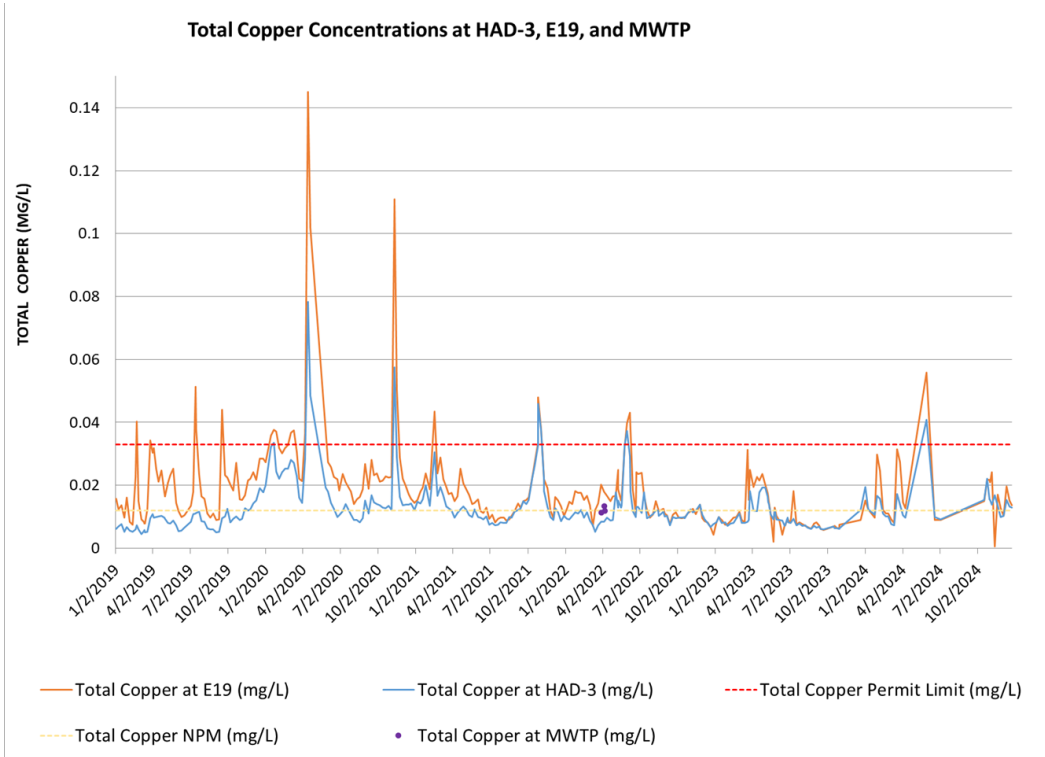
- Discharge/WTP Update
 - Discharge was discontinuous in Q4.
 - A total of 802,122 m³ was discharged in Q4 with an average daily discharge rate of ~0.128 m³/s.
 - The authorized annual average rate of discharge is 29,000 m³/day.
 - The maximum authorized rate of discharge is 52,000 m³/day.



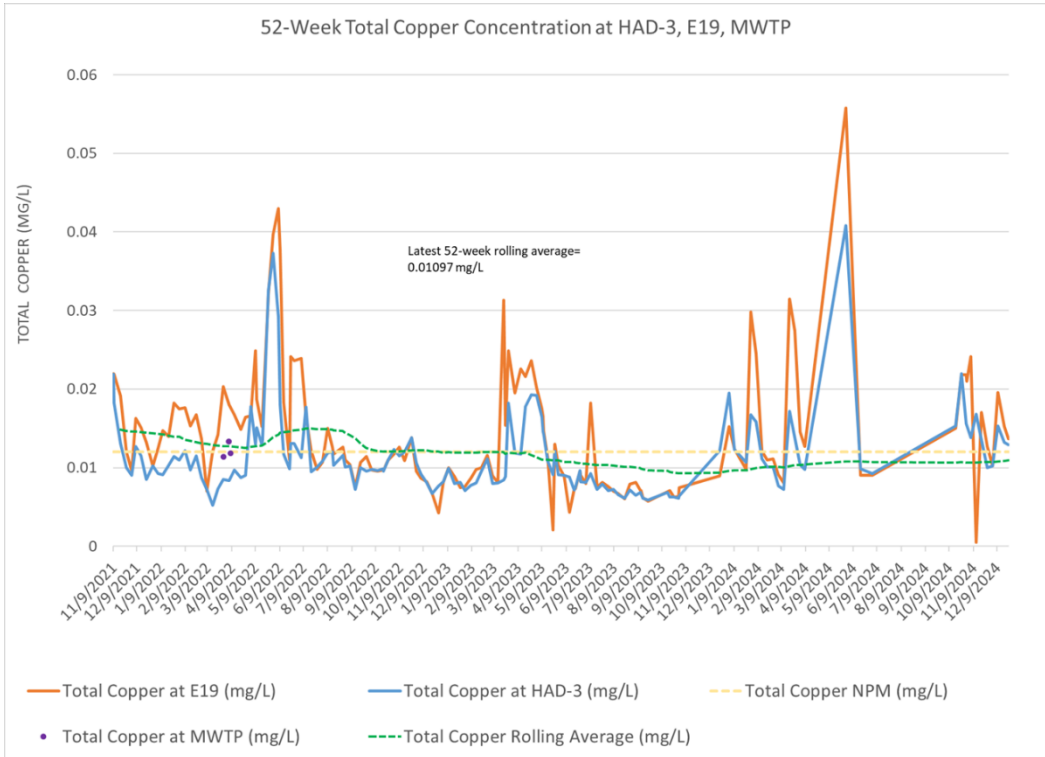
- Over the last year, we’ve discharged substantially less than in previous years all to do with the drought conditions that we’ve experienced here in the Caribou.

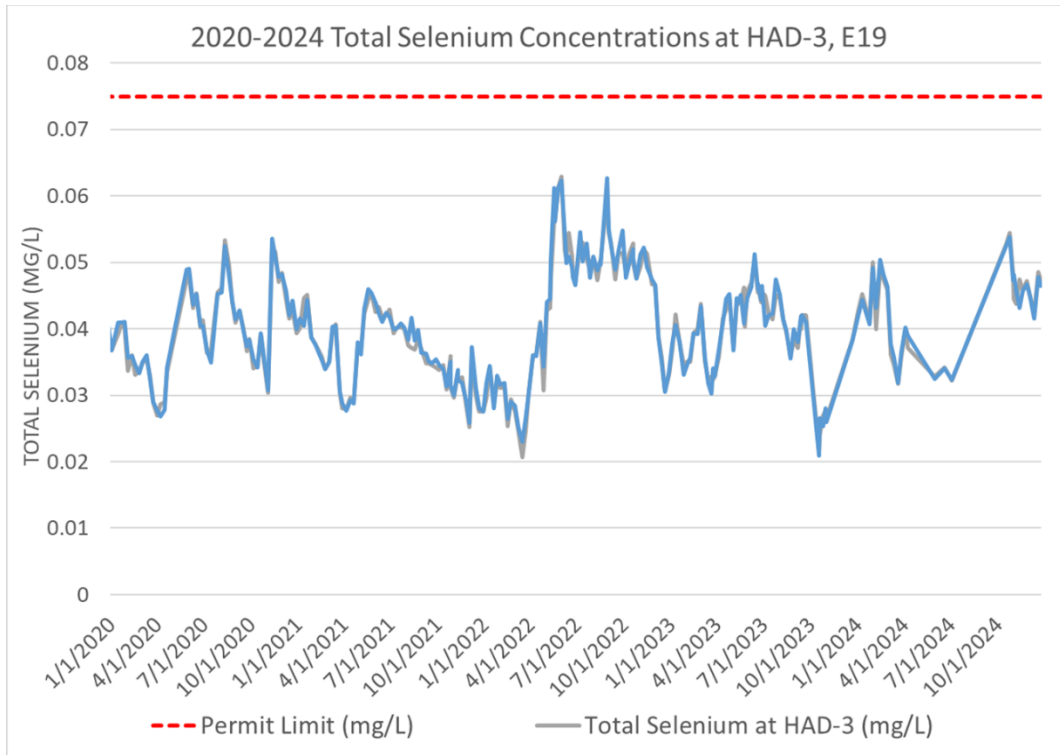


- This chart shows recent total copper concentrations at HAD-3 (effluent) and E19 (influent of the water treatment plant)
 - We've had some higher concentrations of total copper in our recent samples which is attributed to the ongoing construction at the TSF in and around the breach sump (upstream of the Perimeter Embankment Till Borrow Pit, which is the influent to the water treatment plant). Typically, in the previous year we've been below the NPM. Since our construction started in the spring and resumption of our water treatment plant operations in October we've seen slightly elevated total copper concentrations. We attribute that to particulate matter in a flushing event in those areas that were impacted by the construction.

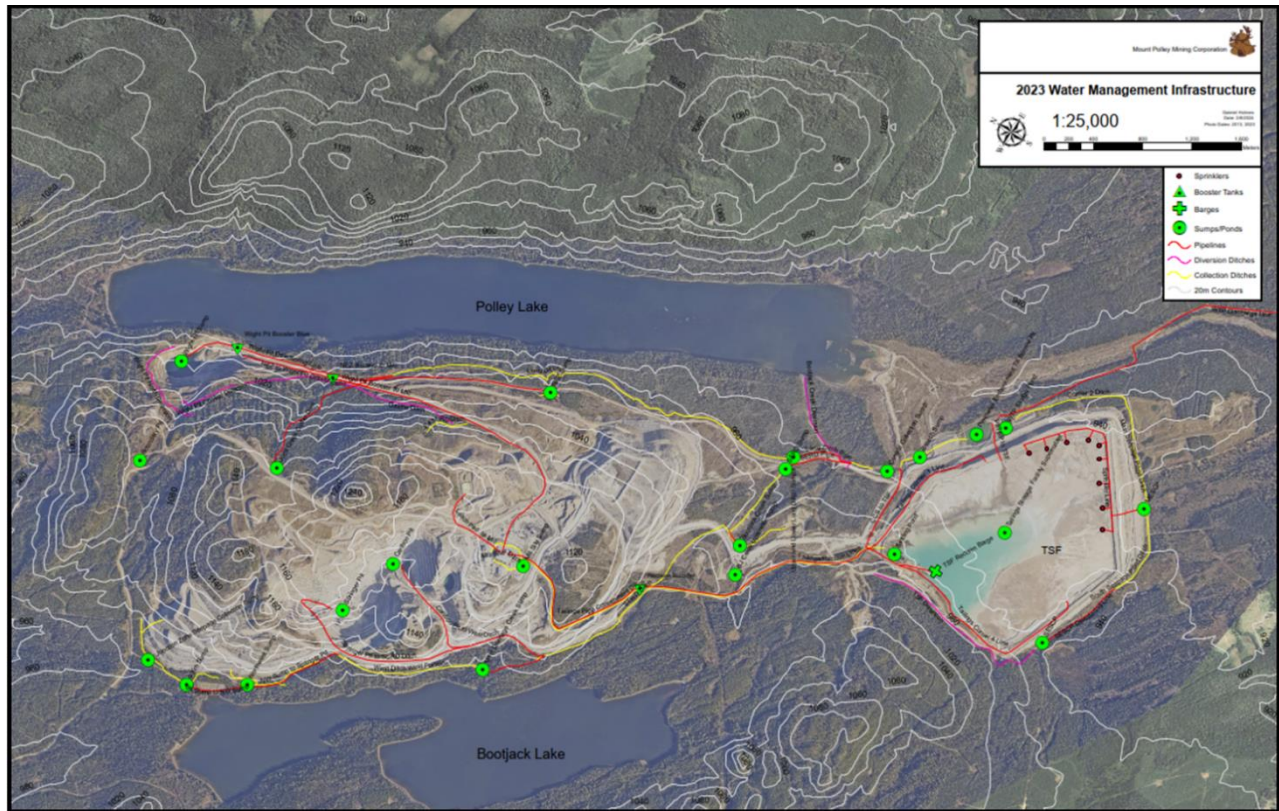


- Total copper concentrations at HAD-3 and E19 over the last 5 years. The red line is the permit limit and the yellow line is the NPM.





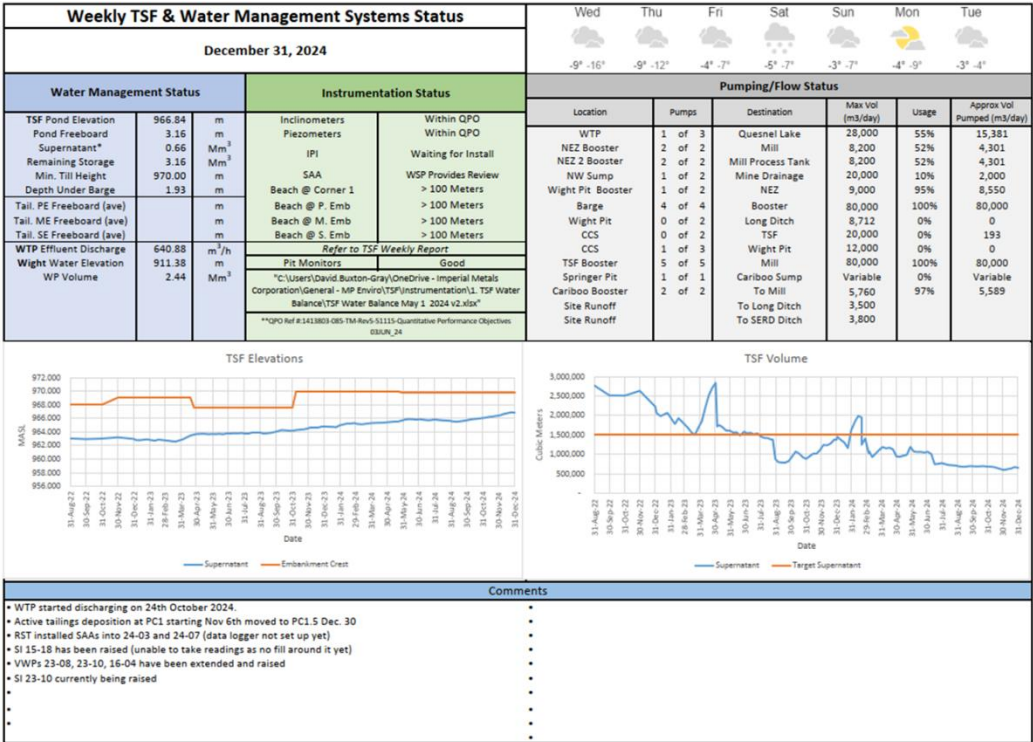
- 2020-2024 total selenium concentrations
 - Within the range of typical within the last little while.
- Water Management Infrastructure
 - This map shows our diversion ditches, collection ditches, pipelines, sumps and ponds. These are all locations that we monitor through our contact water sampling. This was updated in our 2023 annual reporting. We will have the pipeline from the SERDS sump down to the Wight Pit on 2024 map. Each one of these elements is absolutely critical to the water management operations that we have. Any one of these things fail and it could result in an (potential) unauthorized discharge to the environment. We will keep you informed of any challenges with our water management at Mount Polley. It is an ongoing effort.



- Site Water Balance

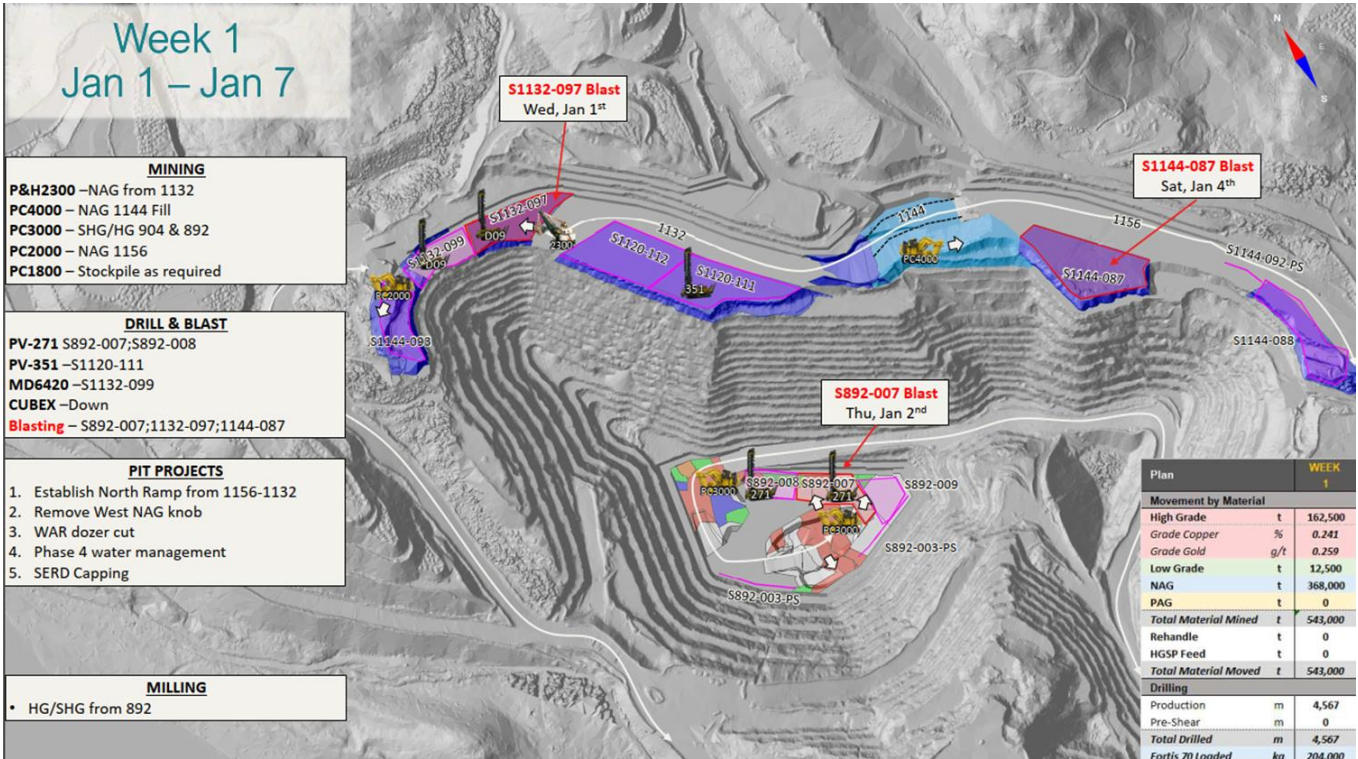
Site Water Balance			
	Volume – Jan 7 (Mm ³)	Volume – Dec 31 (Mm ³)	Total Change (Mm ³)
TSE	0.63	0.66	(0.03)
Cariboo Pit	-	-	-
Wight Pit	2.40	2.49	(0.09)
Above Portal (incl Rockfill)	1.77	1.81	
Below Portal (incl Rockfill)	0.63	0.63	
Total	3.03	3.15	(0.12)

- As of January 7, we had 3.03 Mm³ water onsite which is similar to what we had back in August. We have 0.63 Mm³ in the TSE, and in the Wight Pit we have 2.40 Mm³.
- Here is a snapshot of our TSE Dashboard as of December 31. Our instrumentation tech updates this weekly and it is sent to the EoR. There is a lot of information on here but essentially, it shows all of the elements that are monitored. If anything was to not meet the Quantitative Performance Objectives it would be highlighted in the tables. It also shows TSE elevations and volumes. Our target supernatant volume is well below the target volume of what we want to have in the facility and that is in response to the drought conditions. Because of the low water levels, our barge began to beach, the pumps started touching the bottom, so we started pumping water in there from the Wight Pit.



Mining Update – Gabriel Holmes

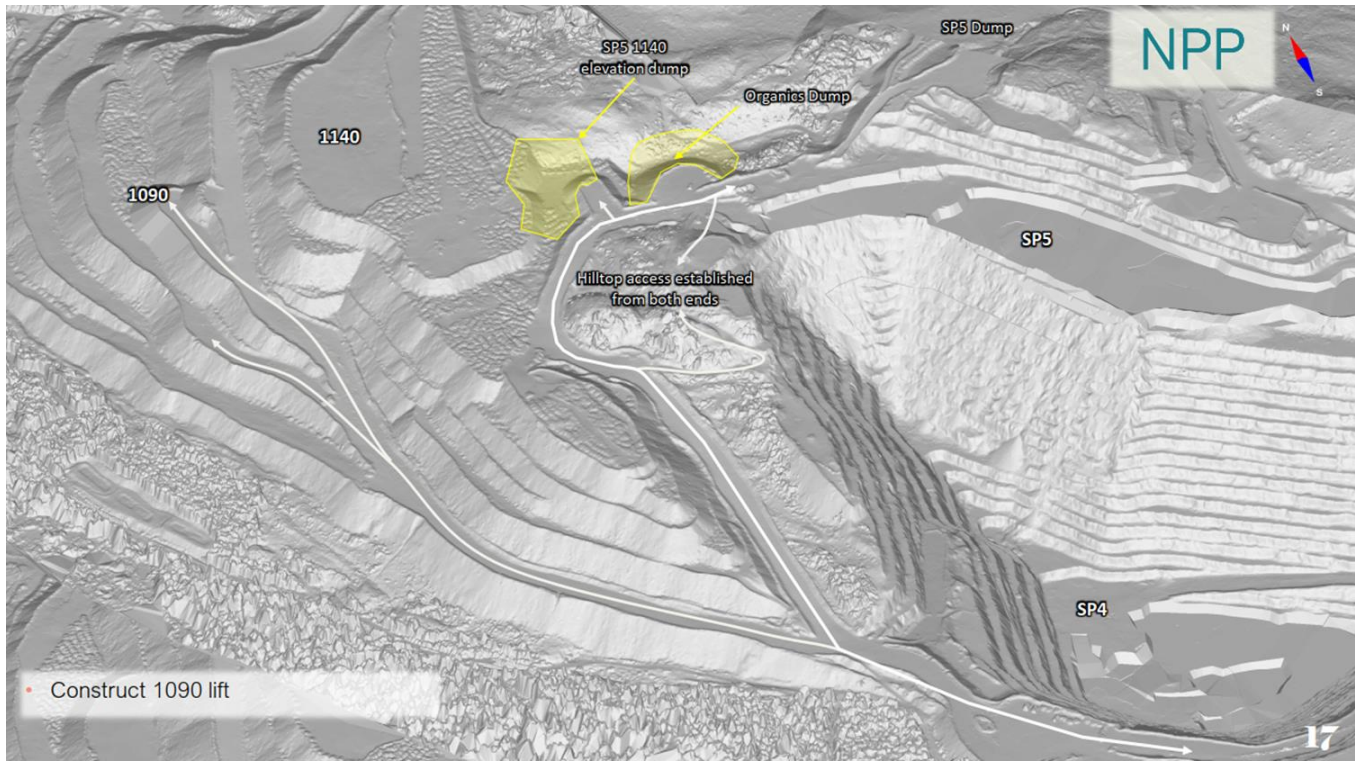
- These are some examples of our planning diagrams. They are done on a 3D LiDAR surface.



- Week 1 Jan 1 - 7: Shows where the diggers and drills are and where they are moving



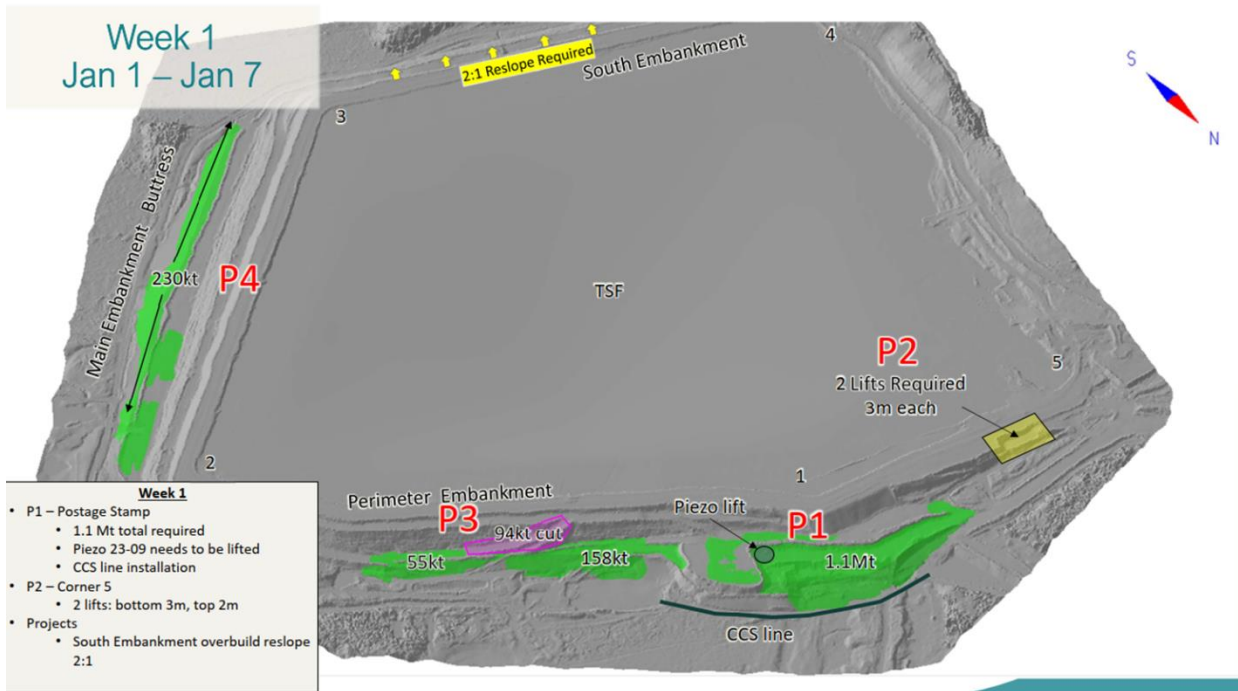
- Week 2 Jan 8 – Jan 14: The tools that are available now for modern mining are very high tech and reliable



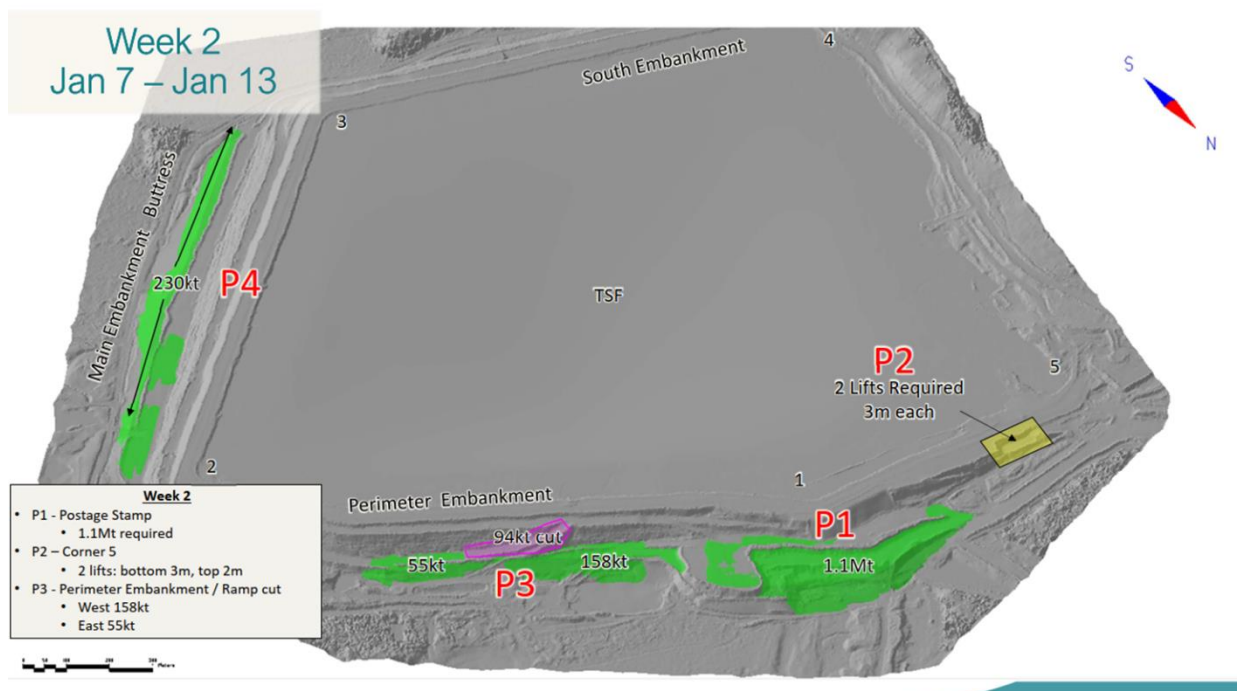
- NAG/PAG Pad (NPP) which is a general location, it is the bottom layer of NAG underneath the PAG dump, we had to move some soil there, it shows where to put the soils we are dumping

- TSF Construction Update

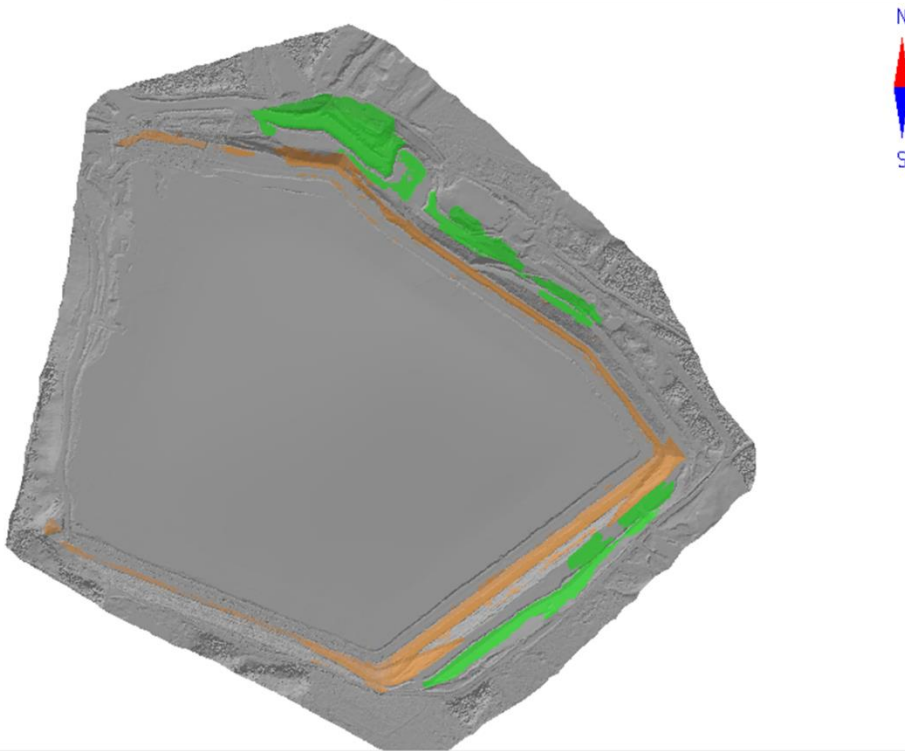
- This is out of the same two-week plan. The green shows the work that needs to be done on the buttress and orange is work that needs to be done on the embankment. It shows the areas we need to target to bring the dam up to the design criteria. P1 is priority 1, P2 is priority 2, etc.



- Week 2 has the same target areas



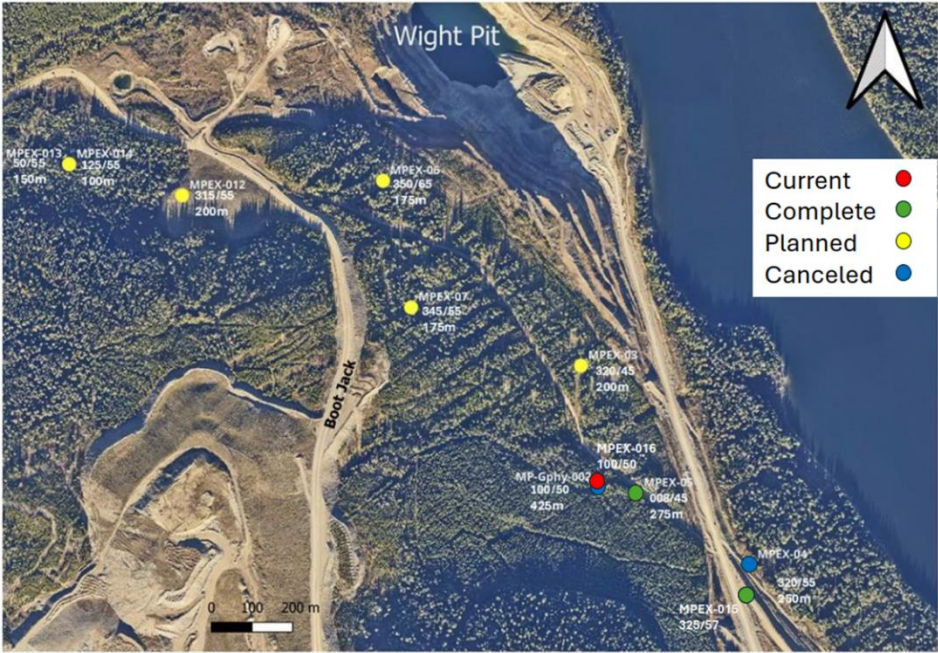
- Status January 6, 2025



- Exploration Update

Mount Polley 2024_Diamond Drilling Update Map_Wight Pit Area

November 5, 2024



- All of these holes have been drilled but the lab results have not been received.

- Human Resources

- We are hiring. Operations are in full swing and we are looking for new members to join our team.

EE totals	Name		
Name of EE Subgroup	Active	Inactive	Grand Total
Full-time Hourly	232	15	247
Full-time manager	14		14
Full-time Salaried	100	5	105
Part-time Hourly	13	1	14
Part-time Salaried	5		5
Grand Total	364	21	385
	Dec-24		
New Hires	3		
Resignations/Terminations	3		

- Seeking tradespeople, mechanics, welders, millwrights, pipefitters, electricians and carpenters
- Nearing full staffed in some departments
- Seeking to fill technical positions, engineers and planners

- Reclamation Update – Gabriel Holmes

- Comprehensive Soil Stockpile Survey - MPMC has conducted a comprehensive soil stockpile survey to reconcile stockpile volumes. This is in response to some incorrect data in our current soil inventory and an EMLI order stating that MPMC must develop a Soil Contingency Plan to address potential soil shortfalls at closure. The survey was conducted using a drone to survey the target areas and compared to 2023 LiDAR. The updated volumes will be used for end of life mine planning.

Next Meeting

- April 3, 2025 at the Williams Lake First Nation

Meeting End 11:50 pm

Resources

PLC SharePoint Site:

<https://imperialmetals.sharepoint.com/sites/MountPolleyPLC>

BC Ministry of Environment Natural Resource and Enforcement Database:

<https://a100.gov.bc.ca/pub/ocers/searchApproved.do?submitType=menu>

BC Mine Information page:

<https://mines.nrs.gov.bc.ca/>

mountpolley.com

[Mount Polley - Site Journal](#)

imperialmetals.com

[Home](#) | [Imperial Metals](#)

[Facebook.com/mountpolley](https://facebook.com/mountpolley)

Sentinel Hub Playground

[Explore \(sentinel-hub.com\)](#)

[Snow Survey Stations Interactive Map \(arcgis.com\)](#)