



Mount Polley Mining Corporation

an Imperial Metals company
Box 12 • Likely, BC V0L 1N0 • T 250.790.2215

MOUNT POLLEY MINING CORPORATION (MPMC) PUBLIC LIAISON COMMITTEE (PLC) MEETING SUMMARY

Meeting Details

In person Meeting and Conference Call Meeting – General Meeting
General Meeting – Q2 2025

April 3, 2025

9:00 am to 1:00 pm

Meeting held at the Williams Lake First Nation Office, 2561 Quigli Drive, Williams Lake, BC

Meeting Called by: MPMC Designated Representation

Meeting Chaired by: Gabriel Holmes

Minutes by: Alicia Lalonde

Member	Present	Call-in	Organization
Abhirosh Chandran		x	Ministry of Environment and Climate Change Strategy
Alan Egilson			Ministry of Water, Lands and Resource Stewardship
Alicia Lalonde	x		DWB Consulting (MPMC)
Alex Gresl			Williams Lake Chamber of Commerce
Bee Hooker			Big Lake Community
Bill Carruthers			Williams Lake Community
Bill Lloyd	x		Horsefly River Roundtable
Chris Garda			Ministry of Environment and Climate Change Strategy
Christine McLean			Mitchell Bay Community
Chris Swan	x		Ministry of Water, Lands and Resource Stewardship
Doug Watt	x		Likely Resident
Emily Sonneg			Xat'sull - Soda Creek First Nation
Gabriel Holmes	x		Mount Polley Mining Corporation (MPMC)
Jackie Sarginson			MLA Cariboo North Coralee Oaks Office
Jason Raine			University of Northern BC and Quesnel River Research Centre
Jeff Raymond	x		Likely Resident
Jillian Tamblyn			Ministry of Environment and Climate Change Strategy
Johanna Godt			Sedgewick Strategies (MPMC)
Kala Ivens	x		T'exelc - Williams Lake First Nation
Kelly Parker			MPMC
Ksenia Kolodka			Xat'sull - Soda Creek First Nation
Leanne Perrich			Interior Health
Linda Bartsch			Horsefly Business
Lisa Kraus			Likely and District Chamber of Commerce
Lyn Anglin			Consultant to Imperial Metals (MPMC)
Mathieu O'Leary			MPMC
Maureen LeBourdais	x		Cariboo Regional District
Micky McIntosh			Likely Resident
Richard Holmes			Little Lake Community
Scott Poirer		x	Ministry of Environment and Climate Change Strategy
Steve Hocquard	x		Horsefly Community
Surinderpal Rathor			Williams Lake Government
Tara Cadeau		x	Ministry of Mining and Critical Minerals
Ty Sorensen	x		T'exelc - Williams Lake First Nation
Vicki Bourdrias			Ministry of Transportation and Transit
Victoria Stevens		x	Ministry of Mining and Critical Minerals
Walt Cobb			Williams Lake Resident
Whitney Spearing			T'exelc - Williams Lake First Nation
Yoana Dinkova	x		Xat'sull - Soda Creek First Nation
Guests			
Shane Flynn		x	Imperial Metals

Meeting Start: 9:05 am

Roll Call – Introductions and acknowledgements – Gabriel Holmes

- I'd like to acknowledge that we operate the mine on traditional territories and work in partnership with the Williams Lake and Xat'sūll First Nations.
- We are hosting the meeting in the WLFN council chambers, thank you for having us.

Additions to Agenda, and Approval of Agenda – Gabriel Holmes

- As I have indicated in the agenda, we are going to go over the following:
 - PLC Membership and Terms of Reference Review
 - ENV/EMLI Discussion/Compliance Review
 - Permitting/Amendment Applications
 - Environmental Monitoring Update
 - February 4, 2025 Unauthorized Discharge
 - March 4, 2025 Total Phosphorus Exceedance
 - Discharge/WTP Update
 - Water Management Update
 - Remediation/Reclamation Update
 - Mining Update
 - Tailings Storage Facility Update
 - Roundtable Discussion
 - PLC Questions/Comments
 - Next Meeting – July 2025?
- Does anyone have additions to the agenda?
 - Gabriel Holmes (GH): Notice complaint received last week regarding blasting activities.
- Agenda approved.

- We received a noise complaint from a blast on March 25, 2025 from a local area resident. The blast occurred in Phase 5 (the northwest portion of the pit). If you have concerns with noise and blasting operations, please let us know. We had another noise complaint last year but it was around 1:00am so it was not related to a blast.
- Action Items from Last Meeting:
 - None.

PLC Membership and Terms of Reference (ToR) Review – Gabriel Holmes

- We have some vacancies. I have approached Deborah Portman (ECCC) to join, but I have not received a response. Department and Fisheries and Oceans, I have asked a number of people from that organization but no one has committed. I reached out to the United Steel Workers over a year ago and I haven't heard back from them. MPMC Representative, we are thinking about removing that since we always have several MPMC members present. If there is someone that you think could benefit from joining the PLC we have a mechanism in the ToR to do just that.
- I circulated the ToR some time ago but have to make some minor changes again (names of Ministries have changed, etc.). I will recirculate, give a couple of weeks for comment and then resubmit them.

Member Organization	Allocated Seats	Name	
BC Ministry of Indigenous Relations and Reconciliation	1	Vacant	
BC Ministry of Agriculture*	1	Vacant	
BC Ministry of Environment and Climate Change Strategy (ENV)	2	Abhirish Chandran, Chris Garda, Jillian Tamblin	
BC Ministry of Energy and Mines and Petroleum Resources	1	Victoria Stevens, Tara Cadeau	
BC Ministry of Forests, Lands and Natural Resource Operations	1	Alan Egilson, Chris Swan	
BC Ministry of Transportation and Infrastructure	1	Vickie Boudrias	
Interior Health Authority*	1	Leanne Parrich	
Environment and Climate Change Canada*	1	Vacant	
Department of Fisheries and Oceans Canada*	1	Vacant	
Xatsill First Nation	1	Emily Sonntag, Yoana Dinkova	
Williams Lake First Nation	1	Kale Ivers, Ty Sorensen, Whitney Spearling, Nicholas Coutu	
Mount Polley Mining Corporation	2	Gabriel Holmes, Matt O'Leary, Lyn Anglin (Anglin and Associates), Alicia Labinde (DWB), Johanna Godt (Sedgwick), Shane Flynn (Imperial Metals)	
University of Northern British Columbia	1	Jason Raine	
Cariboo Regional District	1	Maureen LeBourdais	
Environmental Advocacy Group	2	Christine Mbean (Concerned Citizens of Quesnel Lake), 1 seat vacant	
Local communities* - Community Member	1 each	Doug Watt (Likely), Steve Hooqard (Horsefly), Richard Holmes (Little Lake), Mickey McIntosh (Likely), Bill Carruthers (Williams Lake), Walt Cobb, Jeff Raymond (Likely), Bill Lloyd (Williams Lake)	8 Members Total
Local communities - Business Member	1 each	Bee Hooker (Big Lake), Linda Bersch (Horsefly)	8 Members Total
Local communities - Government Member	1 each	Jackie Sarginson, Surinderpal Rathor	8 Members Total
Local communities - Chamber of Commerce Member	1 each	Lisa Kraus (LDCC), Alex Grest (WLCC)	8 Members Total
United Steel Workers	1	Vacant	
MPMC Employee Representative	1	Vacant	
The Interested Public (if determined by the membership of the PLC that additional representation of the public is needed)	1	Vacant	

* These members will be invited to PLC meetings when there are topics relevant to their mandates to discuss
 * Local communities are defined in the Definitions section - 150 Mile House, Big Lake, Horsefly, Likely, Mitchell Bay, Morehead, Little Lake, Williams Lake

Communications

- We are always asking ourselves if we are good communicators and if we are providing the information that everybody wants. There is always room for improvement.
- It is important that we communicate to the regulators and stakeholders regularly, our doors are always open.

- We are committed to our communications plan. We did find some issues with the plan recently; it was something that Doug pointed out. We had specific reference to participation in the Mine Review Committee (MRC) in our plan and we will have to amend that as we have no control over external groups like the MRC.
- We have the PLC, Sharepoint and other websites, meetings, calls and presentations, tours and reporting to convey information.
 - We just completed an intensive reporting period. Our annual environmental and reclamation reports as required under Permit 11678 and permit M-200 were just submitted on Monday and are available on the Sharepoint site.
- Safety:
 - Mount Polley Mining Corporation is committed to providing a safe and inclusive work environment to all its workers, staff, contractors and guests.
 - Initiatives:
 - Quarterly site wide communication meetings- it is a mandatory meeting for every employee and is an opportunity to speak with the employees about what is going on
 - Regularly scheduled departmental safety meetings (monthly) and Shift Cycle Audits (each department conducts a weekly audit of their work area where hazards and potential hazards are identified and passed onto the cross shift)
 - Joint Occupational Health and Safety and Environmental Committee (meet monthly with tours)
 - Mine Rescue training weekly
 - Safety statistics up to the end of March are included in the table below. We will talk about the spill later in the presentation.

Reportable Injuries/ Incidents		
	MTD	YTD
Lost Time Accident	0	1
Medical Aid	0	2
First Aid	0	4
Reportable Incident	2	9
Spills – Reportable (BC-Env)	0	1

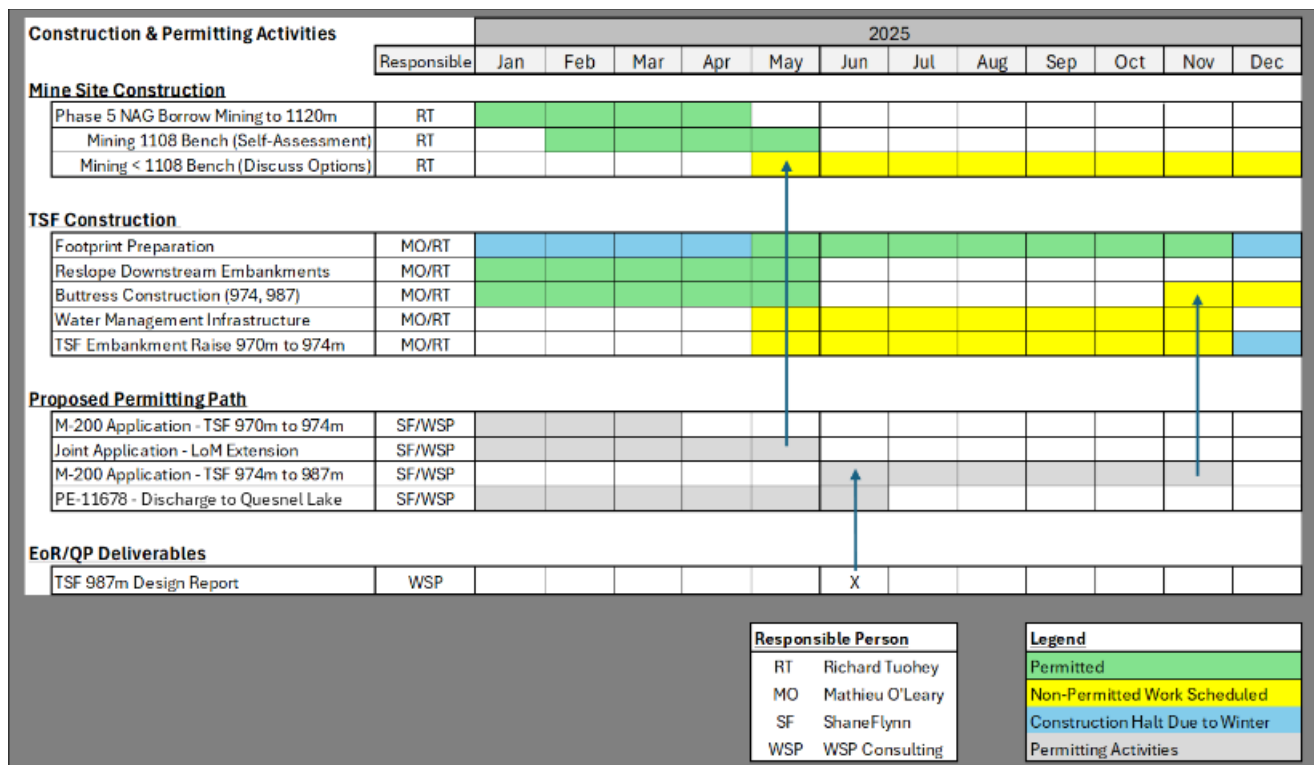
- The MPMC Community Initiatives Committee will continue with community contributions in 2025 and will be committing to many of the same organizations as in 2024.

- To date: Fishing derby, Mining for Miracles, Heavy Metal Rocks, indoor rodeo, Williams Lake stampede, performances in the park, Cedar City Museum, MPMC Family Day, Big Lake Volunteer Fire Rescue, Speaking our Truth Pow Wow, Father's Day Pow Wow and Orange Shirt Day
- We have had a number of requests for support including from the Horsefly River Roundtable with regard to the boardwalk. I am running that up the chain. It is going to be an expensive installation to my knowledge.

ENV/EMLI Discussion/ Compliance Review

- Let's open up the discussion to ENV and MCM. Do you have anything to bring to the committee's attention regarding compliance from a regulatory perspective?
- Tara Cadeau (TC): In the last couple of years, we have introduced a new team, the Technical Compliance Unit who operate separately from us. They focus on compliance review. Victoria and I are not part of the compliance unit. We are part of the Major Mines Office (MMO) and are responsible for permitting. Although we do conduct desktop and site inspections periodically, they are on an as needed basis. Our roles are focused on permitting work. I don't have information on the Technical Compliance Unit's schedule.
- Victoria Stevens (VS): My colleague did a reclamation inspection last year so he is working through those responses right now. The Technical Compliance Unit does the bulk of the inspections for the province. The permitting team is working through the Springer Pit application.
- GH: For those M-200 permit inspections, we have those regularly, on a monthly basis sometimes more. Those are all public documents. I don't think our responses are posted on the BC Mine Information website.
- VS: We did receive some direction last July on how to write our inspection reports in such a way that they do not have to go through a HARMS review so that they can be posted much quicker on the website.
- Scott Poirer (SP): The compliance and enforcement branch within ENV is also separate. There was a desktop inspection completed in February of this year and looking through that report, that authorization will be followed up with an inspection. I understand that compliance officers will be visiting Mount Polley this year but I am unsure of the exact timing of that inspection. We do regular inspections of sites, both desktop reviews and on site so we did the desktop review and now we will be going out to site.
- GH: Yes, that inspection was a desktop review of 2022 and 2023.
- Abhirosh Chandran (AC): The CEMP is still with the decision maker so I don't have any update on that.

Permitting/Amendment Applications – Shane Flynn



- Mount Polley was in Care and Maintenance until 2022 and reopened slowly under the permit that existed at the time. They recognized that they had quite an addition to the life of the mine. In order to gain access to the reserves in the new life of mine permit and construct the various pieces of infrastructure most noticeably the TSF and SERDS, we would have to undergo a number of permit amendments to open up the ability to access these items. Everything that I'm going to discuss today started out as an amendment but we have had to break it down. Right now, we are mining off the Phase 5 NAG borrow, the upper benches of Phase 5 which is the north wall of the Springer/Cariboo Pit, we call that a NAG borrow in order to have access to construction material to continue on with TSF construction, specifically the buttress. That is to be done in the next month or so. We have a delay in the Springer/Cariboo Pit permit application so we have self-assessed ourselves and come to a non-substantial finding that removing an additional bench from that borrow is within our rights. We discuss all of this regularly with the MMO, we have a meeting with them every 2 weeks. Getting into what we are working on right now, mining below the 1108 bench is the rest of the life of mine. The 1108 bench is about 3.5 million tonnes which is about a month and a half of mining. We think that will get us to the end of May. Essentially, we need the Joint Application to be approved by the end of May.
- TSF Construction- These elements were broken out so that they could be actioned in appropriate timeframe. Last year we started footprint preparation for extending the buttress and re-sloping the embankments. In order to carry on above the 970m elevation, we have had to flatten the slopes to 2:1. Re-sloping of the downstream embankments should be done soon. We recently got a permit to construct the embankments from 970 to 974m. I believe that this year we are going to try and raise the dam to 973m.
- Permitting Path Going Forward- We received the permit amendment for the raise to 974m. The Joint Application has been going on since 2022 but we are getting to the point where we need permission to

extend the mining in the pit. We also need to carry on with access to construction materials for our infrastructure.

- Discharge to Quesnel Lake- Right now water is discharged to Quesnel Lake. The permit for that runs out in June.
- Alternate Dam Design- Raising the dam to 987m that will accommodate the life of mine for tailings. There is a separate design for elevation above the 974m.

Actions	Owner
Joint Amendment Application (R3 Nov 26, 2024) Material Alterations to Mount Polley's Environmental Assessment Certificate (EAC) <i>EAO recommends that the Ministers of MCM & ENV grant consent for the proposed Interim TSF Dam Raise. (EAO draft report to be finalized Feb 25th)</i> Proposed TSF raise will be presented to the Ministers this week (Mar 25-29) Application Component: Interim TSF Lift to 974m Acceptable draft of the M-200 Permit in place. Awaiting signed consent. Application Component: Springer Expansion Project Mine Review Committee (MRC) – Round 2 Comments in progress Deliverables submitted to begin the next phase in the application process RLCE update submitted Mar 14. ML/ARD plans submitted Mar 19 Notice of Departure: Continued Mining Denied – Permit amendment required at this point. Timing is very tight. Discuss solutions to prevent layoffs	EAO MCM/ENV MCM/ENV All Parties SRK/MPMC MPMC All Parties
Permit Amendment Application – TSF 974m to 987m <i>TSF to 987m Design Report in progress</i> Permit Amendment Application in future	WSP MPMC / WSP

- As I mentioned, the Joint Amendment Application was submitted on November 26, 2024 and was accepted by the MMO and they have provided a round of comments that we are dealing with as well as a break down of the steps we need to take going forward. One of those was a determination of material alterations from the Environmental Assessment Office. They have determined that they will not be reopening the certificate and they sent a letter to the Ministers of Environment and Mining that they could sign a consent form in order to engage in a permit amendment for material alteration. The sign off for the Joint Application has not been done but the 970-974m was done. The Environmental Assessment on the Springer expansion and the upcoming 987m dam raise has not been done. We are on schedule for the second stage of commentary and feedback from the MMO for the Joint Amendment Application. We did get the TSF raise approved. The draft was finalized and submitted to us. The Reclamation Cost Estimate has been updated and submitted. The ML/ARD management and monitoring plans have been submitted. We are quite tight on timing. In anticipation of a delay that put the approval for the life of mine reserves beyond when we've mined up to them, we have put in a Notice of Departure (NoD) to entertain certain activities that are considered to be substantial but do not require a permit amendment. Upon review, MCM rejected that NoD and stated that a permit amendment was required so we are sticking with the full application. It should be known that we are quite close to requiring access to additional materials to keep the mill running and to restart the TSF construction. For the TSF raise to

987m, we are waiting for the design report and will be working on the preapplication and application in the near future.

- If any questions come up after this meeting, please bring them to our attention.

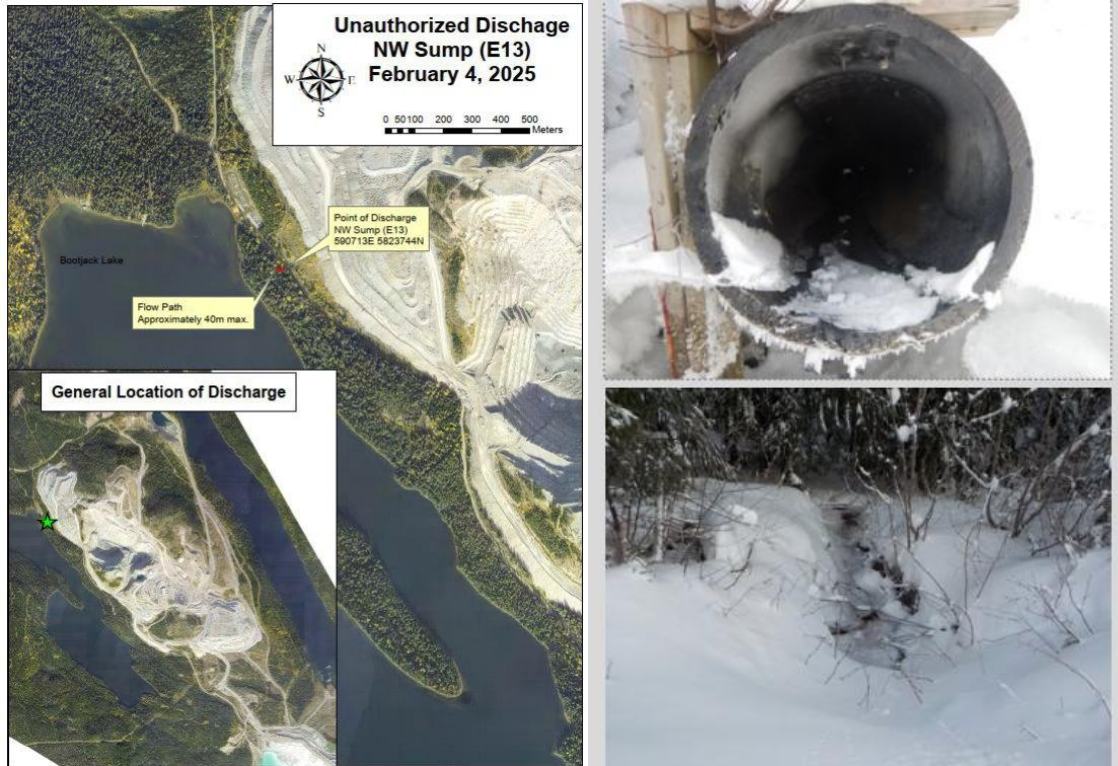
Environmental Monitoring Update – Gabriel Holmes

- Waste Management
 - We generate a lot of waste at a facility such as this and it is important that it be disposed of in a responsible fashion.
 - We have a permitted landfill (under the *Environmental Management Act [EMA]*) on site and have many recycling initiatives underway.
 - We are all responsible for our own waste.
 - Clean up and proper disposal of waste is part of our job.
 - Applicable regulations:
 - *EMA*
 - Overarching document that governs all authorizations and prohibitions
 - Provides general provisions and regulations
 - Outlines compliance, and offences and penalties
 - Hazardous Waste Regulation
 - Waste piles, spills, storage/transportation
 - Ministry of Environment Permit PR 14590
 - Landfill, cardboard/paper recycling, food (putrescible waste, scrap metal)
 - We have independent management waste streams for: food waste, drink containers, paper, cardboard, 5-gallon pails, etc.
 - GFL Environmental is the service provider for hazardous and non-hazardous waste, they take our waste oil, rags, etc.
 - I put together a reference guide with guidelines from GFL, Environmental 360, operational instructions from our site, etc. to assist with waste management that will be put into all lunchrooms and available to all employees at the mine site.
- Recent and ongoing monitoring activities completed in Q1 2025:
 - When in operation, weekly Water Treatment Plant (WTP) water quality sampling including monthly/quarterly/semi-annual toxicity sampling as required by the MDMER and CEMP
 - Monthly water quality sampling at Hazeltine Creek including low level selenium speciation, we did a suite of selenium speciation sampling for 5 months last year and all of our samples came back less than the detection limit but we know selenium is an issue in Hazeltine Creek, we've had to change the monitoring to look at low level selenium to see if we can identify the sources

- Monthly and quarterly water quality sampling of surface and mine affected waters including groundwater and mine site seepage, we sample 5 seepage sites quarterly and then all seepage sites bi-annually in the spring and the fall
 - Pit lake monitoring in the Wight Pit, limnological sampling and pit lake characterization
 - Wildlife monitoring, photo interpretation- we have an ongoing wildlife monitoring program, we are in year 4 of 10
 - Microbiological monitoring (coliform/E.coli)- in the areas of the mine where we have workers interacting with tap water (in our dries, sinks, kitchens, bathrooms, etc.), in line with Interior Health
 - Water quality sampling and monitoring of Springer, Cariboo and Wight Pits (end-of-pipe)- not a lot of water storage in the Springer or Cariboo pits, just small sumps to manage surface water and facilitate mining, the Wight Pit is a small pit lake
 - Data interpretation- ongoing
 - Monthly/quarterly site inspections including waste management- weekly waste management inspection in areas that are high producers of waste
 - 2023 CEMP review underway- no update
 - Reporting- Monthly, quarterly and annual reporting requirements, investigation reports for environmental incidents
- This is a map of our monitoring locations around the site and our snow courses where we monitor snowpack. This map is included in our annual report. I update it annually.



- February 4, 2025 Unauthorized Discharge
 - A pump system failure in the mine contact water collection system at Mount Polley Mine resulted in the NW Sump (E13) filling and overflowing into the adjacent forest. Direct observations indicate that the water level control device failed due to prolonged cold weather. ~284 m³ of mine contact water was discharged to ground. A comparison to the BC Contaminated Sites Regulation shows no exceedances of the regulation except for selenium. Full details of the incident are available in Dangerous Goods Incident Report # 250463



	E13 2/5/2025	BC CSR- AW mg/L
Ammonia, total (as N)	0.0095	3.7
Chloride	<5.00	1500
Fluoride	<0.200	3
Nitrate (as N)	14	400
Nitrate + Nitrite (as N)	14	400
Nitrite (as N)	<0.0100	0.6
Sulfate (as SO ₄)	602	4290
Aluminum, total	0.135	ns
Antimony, total	0.0002	0.09
Arsenic, total	0.00046	0.05
Barium, total	0.0762	10
Beryllium, total	<0.000100	0.0015
Boron, total	0.079	12
Cadmium, total	<0.0000060	0.021
Chromium, total	<0.00050	ns
Cobalt, total	0.00016	0.04
Copper, total	0.0131	0.09
Iron, total	0.178	ns
Lead, total	0.000065	0.16
Manganese, total	0.017	ns
Molybdenum, total	0.106	10
Nickel, total	0.0006	1.5
Selenium, total	0.0915	0.02
Silver, total	<0.000010	0.015
Sodium, total	22.8	ns
Thallium, total	<0.000010	0.003
Tin, total	<0.00010	ns
Titanium, total	<0.0100	1
Uranium, total	0.00104	0.085
Vanadium, total	0.00095	ns
Zinc, total	0.0072	ns

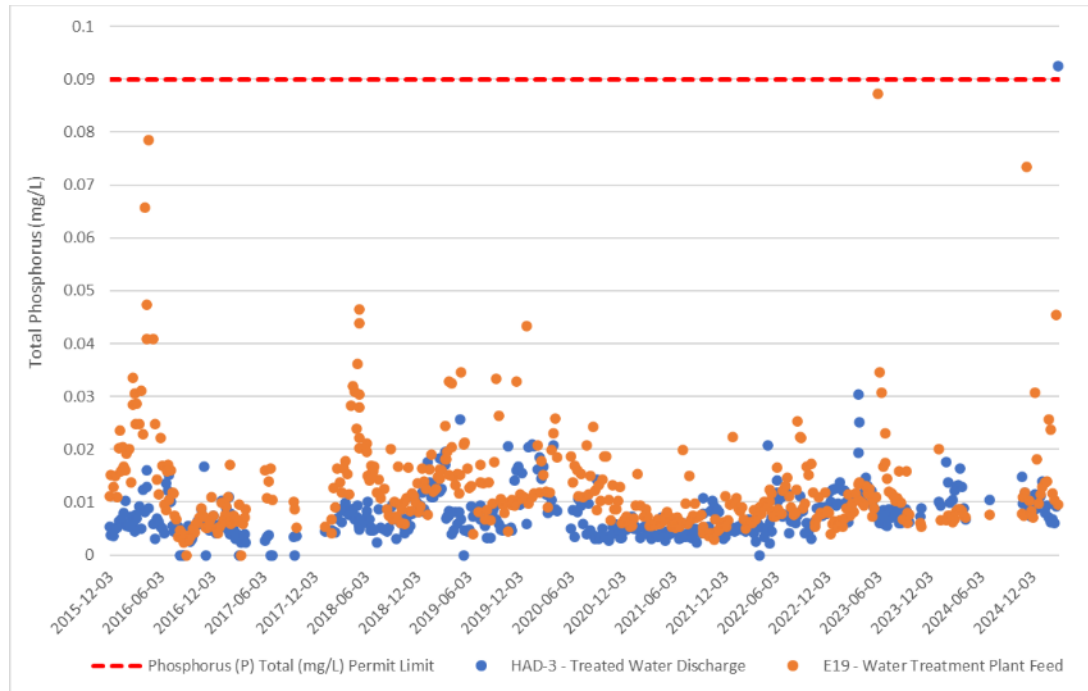
BC CSR AW- BC Contaminated Sites Regulation, Generic Numerical Water Standards, Schedule 3.2, Protection of Aquatic Life
ns- no standard

Bold- Concentration is equal to or above the standard

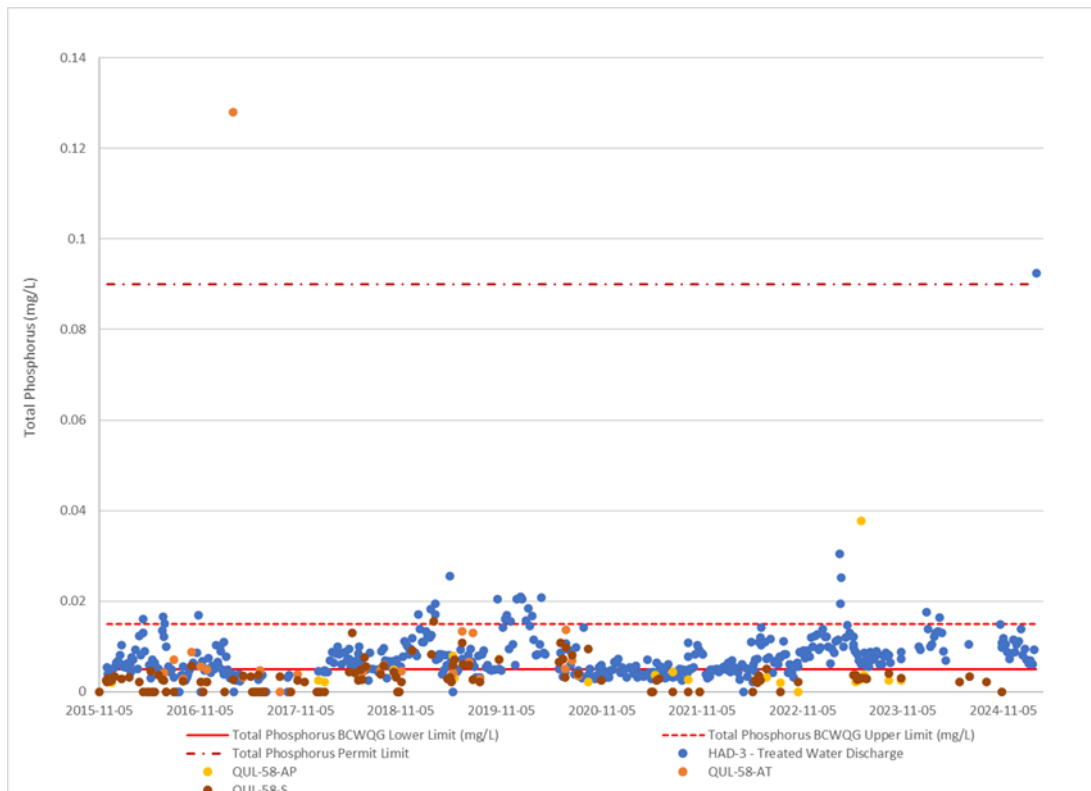
- Images and table included in the incident report. All of our sumps except for one have either an overflow channel or pipe so that if our water management infrastructure is compromised by high flows that water can exit the infrastructure without damaging it. The photo on the top is the overflow pipe and the bottom photo is the path through the forest. It was ~200m upgradient from Bootjack Lake. That would have been the receiving environment had that been a prolonged event but it did rapidly go to ground. Selenium concentrations were what we were worried about and you can see that they were in exceedance of the BC Contaminated Sites Regulation.
- March 4, 2025 Total Phosphorus Exceedance
 - On March 4, 2025, MPMC Environmental Department staff collected water samples at the outlet of the WTP, identified as HAD-3 on site, and referenced as E304230. This data was reviewed by MPMC staff on Friday, March 7, 2025 at approximately 7:00 PM (shortly after the result was received). At this time, it was confirmed that the sample result for total phosphorus was 0.0924 mg/L, exceeding the *EMA* Permit 11678 limit of 0.090 mg/L. MPMC initiated a Level 2 Trigger: End-of-Pipe (HAD-3) Exceedance- Monitoring and Response, per the Annual Discharge Plan (ADP).



- This image was taken the week after the exceedance and is of the ramp. That ramp impacted the downstream water quality in our water collection system. We had a period of melting weather where we saw some significant runoff off of the dump and the roads, and impacted the water quality in our water collection system. It was the first and only total phosphorus exceedance in our WTP effluent to date.



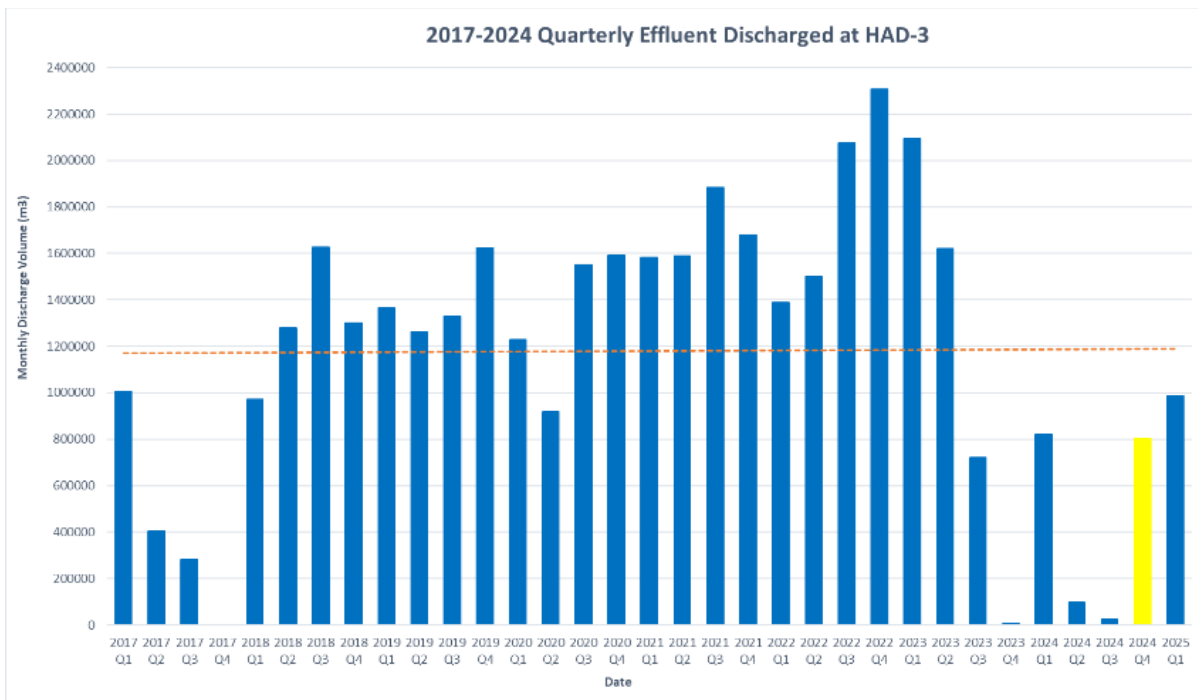
- This is a chart that shows all of our sampling to date from 2015-present. Total phosphorus concentrations in the WTP influent (E19) are represented by the orange dots and effluent (HAD-3) by the blue dots. The permit limit is the red dashed line. You can see there is some influent water that is nearing that permit limit. It is typically associated with particulate matter resulting from melting events because we do see effective treatment which we normally wouldn't see of phosphorus.



- Total phosphorus concentrations in the WTP effluent (HAD-3) and in the receiving environment (QUL-58) from 2015-2024. We spoke about this last year because we do have some concerns about total phosphorus in Quesnel Lake and our ability to discharge during periods of the year when the lake exceeds our permit limit. The entire west arm of the lake sometimes exceeds our permit limit. You can see that generally speaking, the results are between the upper and lower BCWQGs.
- The weight of evidence suggests that it was a result of surface water runoff after a period of non-freezing conditions. Data shows the source of the phosphorus was from the SERD Ditch (SERD) and the Bootjack Creek Sump (E15). Both sites appear to have been impacted by recent soil stripping activities in the vicinity. Details can be found in the corresponding investigation report. The stripping activities were conducted to allow for construction of the tailings access ramp which was permitted in 2011 but was not constructed.

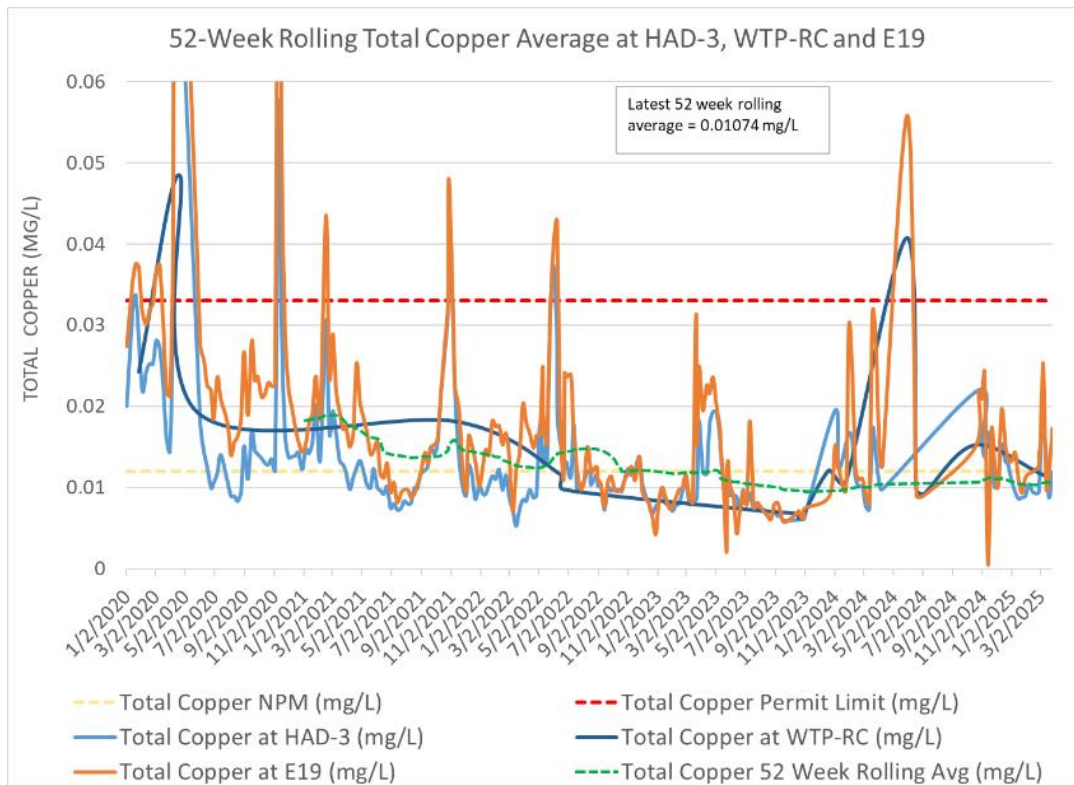
Water Management Update – Gabriel Holmes

- Discharge/WTP Update
 - Discharge was discontinuous in Q1.
 - A total of ~988,354 m³ was discharged in Q1 with an average daily discharge of 10,982 m³/day and an average rate of ~0.129 m³/s.
 - The authorized annual average rate of discharge is 29,000 m³/day.
 - The maximum authorized rate of discharge is 52,000 m³/day.

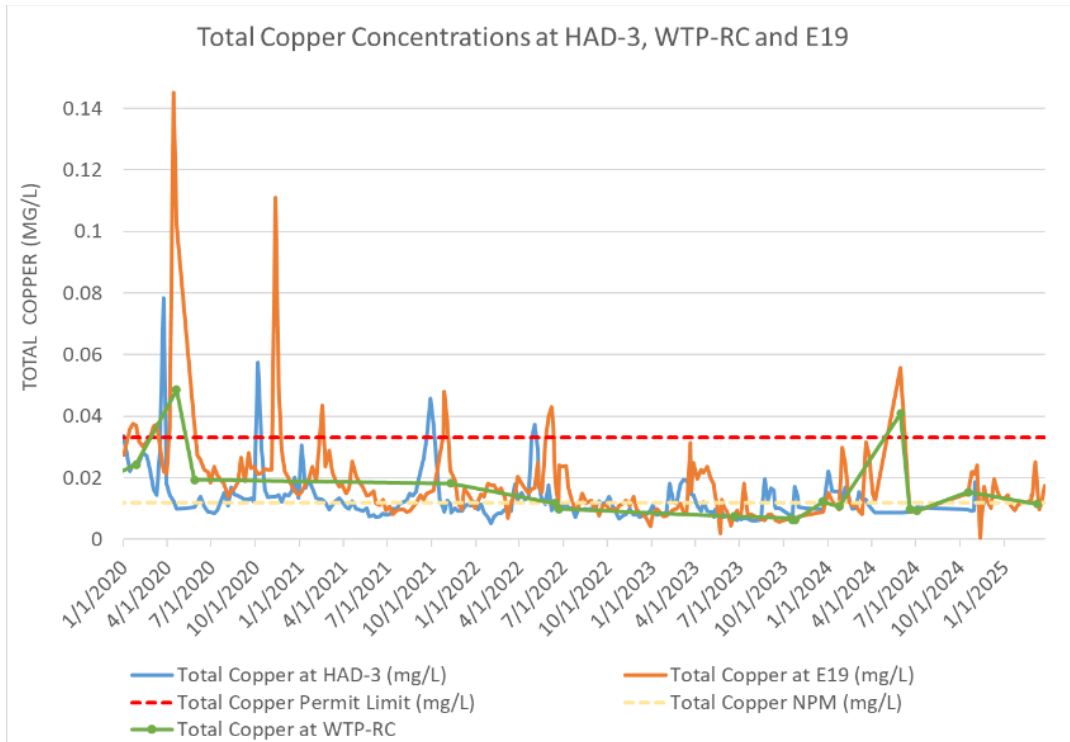


- Since Q3 2023 we have discharged significantly less water due to the multi-year drought conditions. I had a look at snowpack data this morning and we are around 75% of normal but we

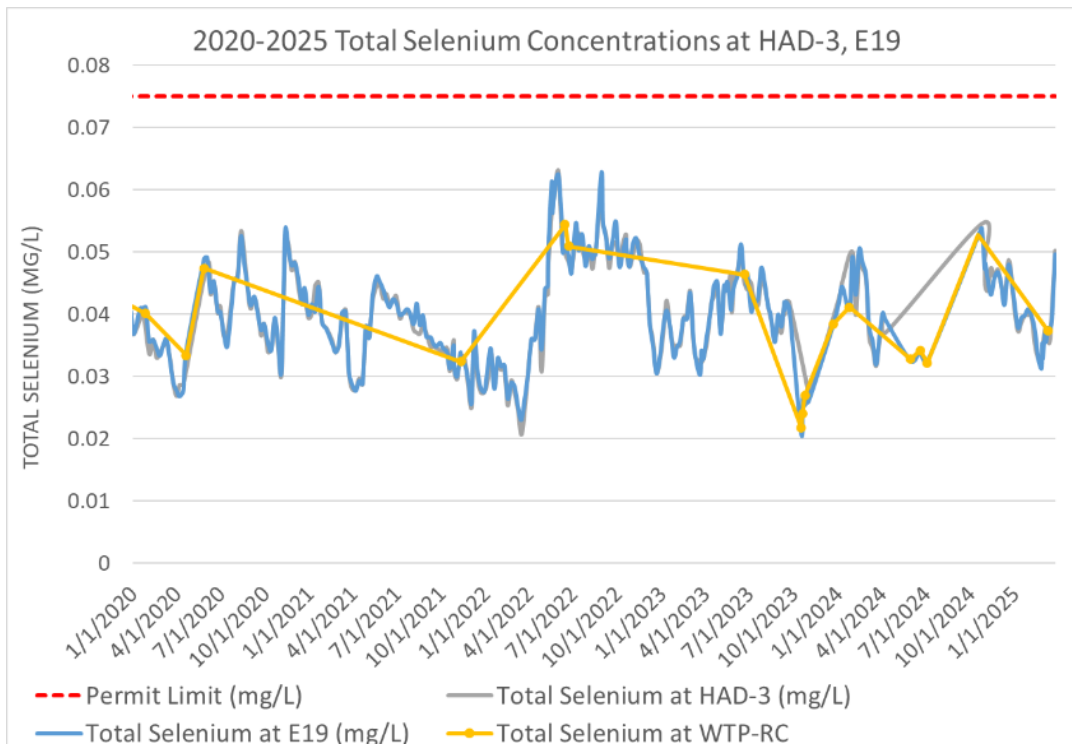
are going to get some warm weather which will likely increase stream flows and reduce snowpack.



- This chart shows the total copper concentrations at HAD-3 (effluent), WTP-RC (recirculating tank sample collected when the WTP is in recirculation mode [not discharging]) and E19 (influent of the WTP) as well as the NPM (yellow dashed line), permit limit (red dashed line) and total copper 52-week rolling average (green dashed line). We are sitting at 0.01074 mg/L for our 52-week rolling average which is less than the NPM of 0.012 mg/L total copper.



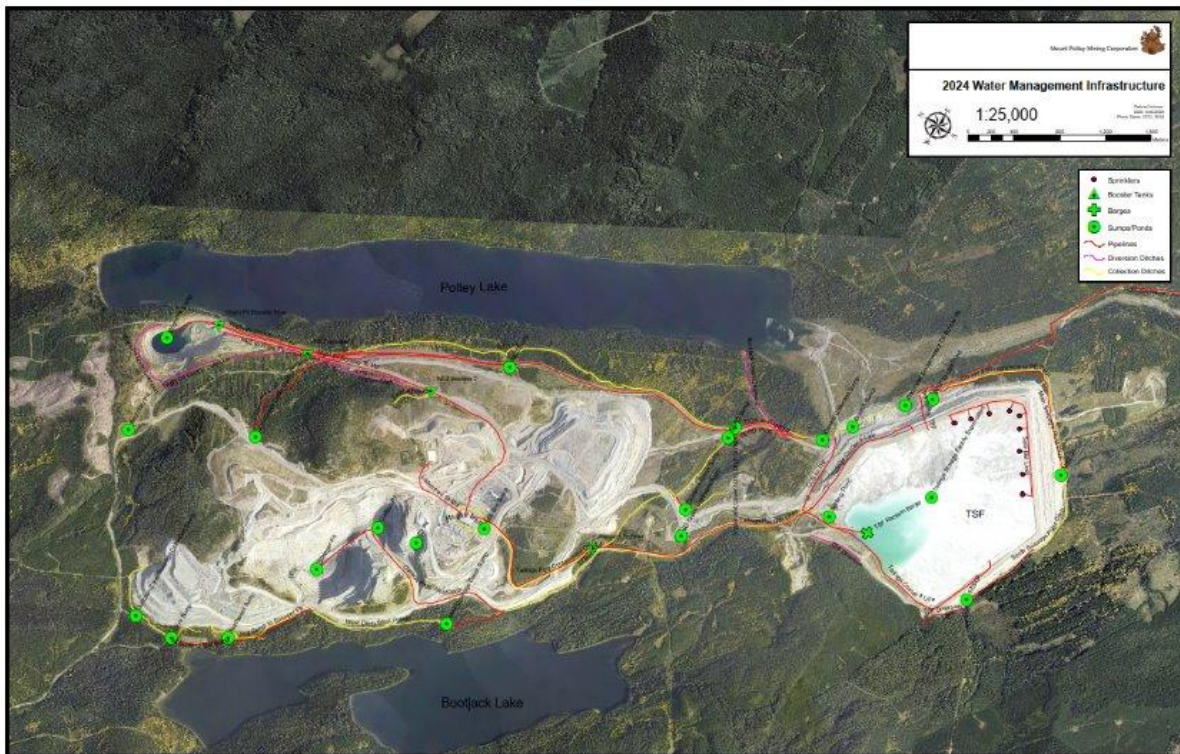
- Total copper concentrations at HAD-3 (discharge), WTP-RC (recirculation) and E19 (influent) over the last 5 years. The red line is the permit limit and the yellow line is the NPM.



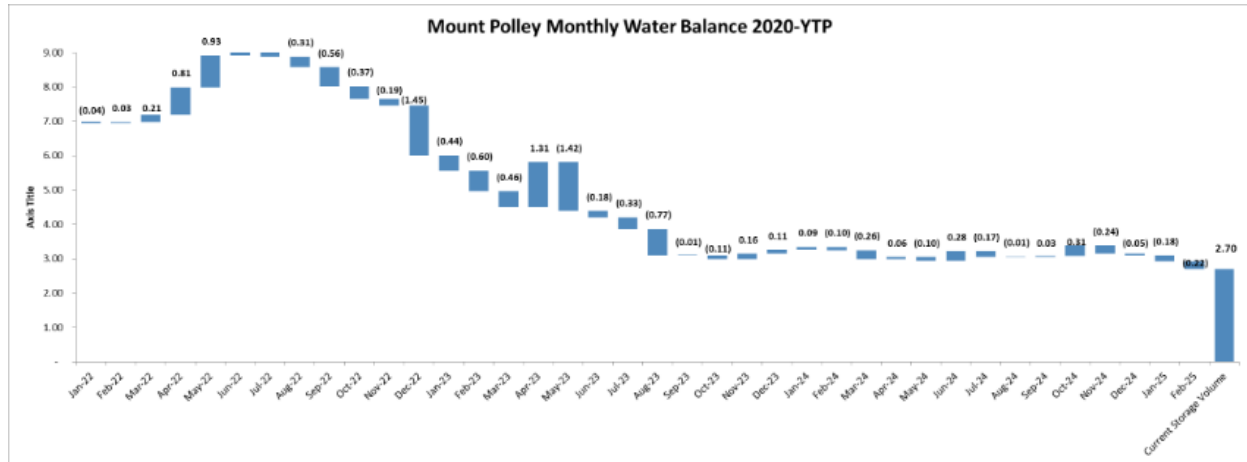
- 2020-2025 total selenium concentrations
 - If we were to put a trendline on this chart we might see a slight increase. We certainly saw one in our last sample associated with the high TSS in the water collection system. We usually see an

increase in all parameters at this time of year though we didn't really see it last year because we had snow free conditions every month and we didn't really have a significant runoff event. This year though at the beginning of March we had a significant one and I'm guessing we might see one this weekend though our roads are now bare/ice-free.

- All of this data is in our annual reports.
- Water Management Infrastructure
 - This map shows our diversion ditches, collection ditches, pipelines, sumps and ponds. These are all locations that we monitor through our contact water sampling. This was updated in our 2024 annual reporting. Each one of these elements is absolutely critical to the water management operations that we have. Any one of these things fail and it could result in an (potential) unauthorized discharge to the environment. We will keep you informed of any challenges with our water management at Mount Polley. It is an ongoing effort.



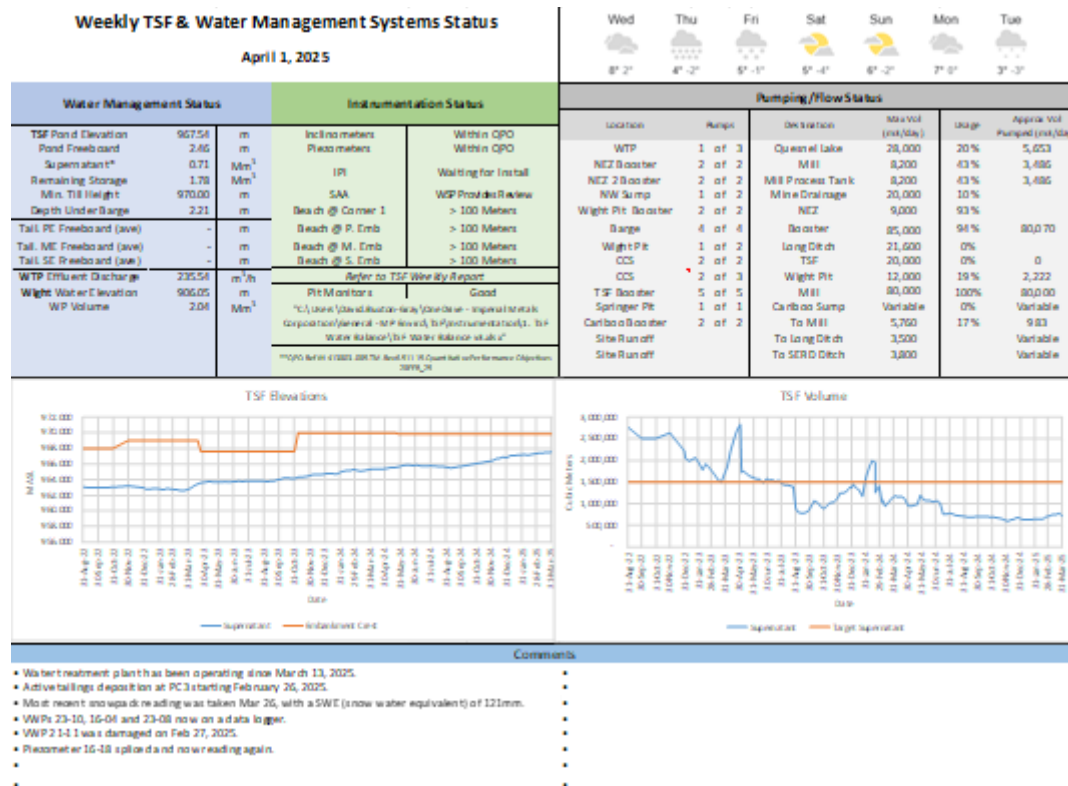
- Site Water Balance



- This is a water balance waterfall showing from January 2022 until February 2025. We do a weekly survey of the TSF and other holding vessels onsite. The Cariboo Pit doesn't really hold water anymore it is just a small sump. The Wight Pit has about 2.04 Mm³ and the TSF 0.71 Mm³. We see a reduction over time and that is primarily due to the elements and the continued operation of our WTP but also that the TSF consumes water as we fill it with sand and tailings material. Water becomes engrained within those materials and takes some time to drain out if it drains out at all.

	Volume - This week (Mm³)	Volume - Last Week (Mm³)	Total Change (Mm³)
TSF	0.71	0.78	(0.07)
Cariboo Pit	-	-	-
Wight Pit	2.04	2.04	(0.00)
Total	2.75	2.82	(0.07)
Volumes As of	1-Apr-25	25-Mar-25	(0.07)

- Here is a snapshot of our TSF Dashboard as of April 1. If anything was to not meet the Quantitative Performance Objectives (QPOs) as set by the Engineer of Record (EoR) it would be highlighted in the tables. The TSF volume is quite a lot lower than our permitted volume. Those targets are changing.



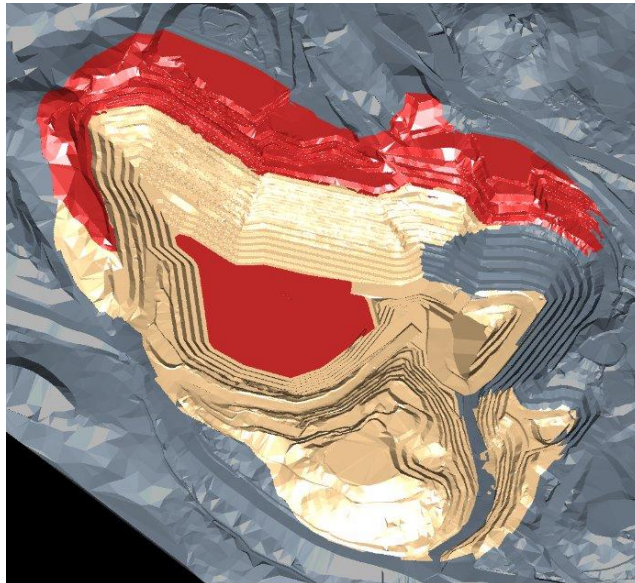
Mining Update – Gabriel Holmes

- Life of Mine- In order for Mount Polley Mine to be a successful mining operation, all of these key elements factor into it
 - Production mining and milling, pit operations, mill operations, magnetite plant, mobile maintenance, mill maintenance and site services (road conditions and water management)
- SERDS Co-Disposal Facility where tailings from the Springer Pit were co-disposed
- TSF Construction
- Magnetite Concentrator
- Engineering
- Geology/Exploration
- Environmental
- Weekly Plan
 - Key Points
 - Pit Operations
 - 1120/1132 bench NAG primary source to TSF (28 ktpd to TSF)
 - Phase 4 dewatering (bottom of the Springer Pit)
 - Achieve bench grade in Phase 4 to allow for 880 drilling
 - Sump development to 880 for water management (also down in the bottom of the pit)- ongoing
 - HGSP (High grade stockpile) reclaim blended with HG (high grade)/SHG (super high grade) from PH5/PH4 – We’ve had a couple of pockets of high-grade ore. Our concentrator struggles to maximize recoveries when rates are really high so we

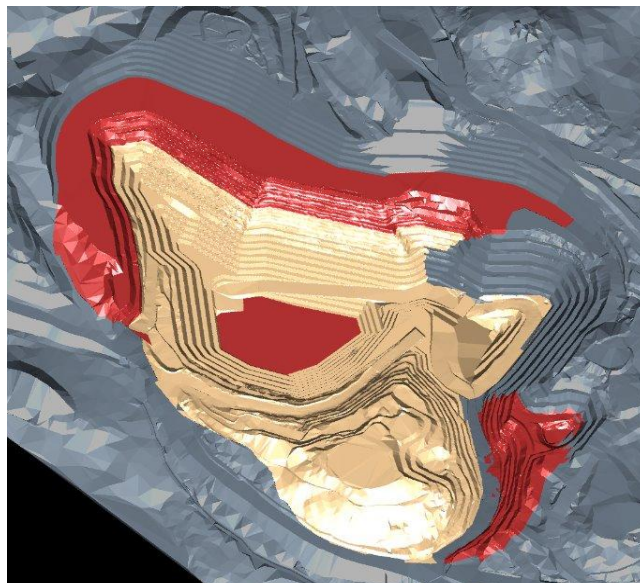
have to blend that material to lower the grades down to a concentration where we can maximize those recoveries

- Ditch/Road maintenance for freshet- ongoing
- Establish C2 for exploration program access into pit- drill in C2 zone doing some exploration
- Ongoing exploration program support
- TSF Construction
 - NAG delivery to 3-corner ramp
 - Perimeter Embankment ramp down to start 5 m lifts
 - Main Embankment Buttress 0.6 m fill in low section
 - Main/Perimeter Buttress re-sloping 3:1
 - Instrument move and lift around 3 corner dumping

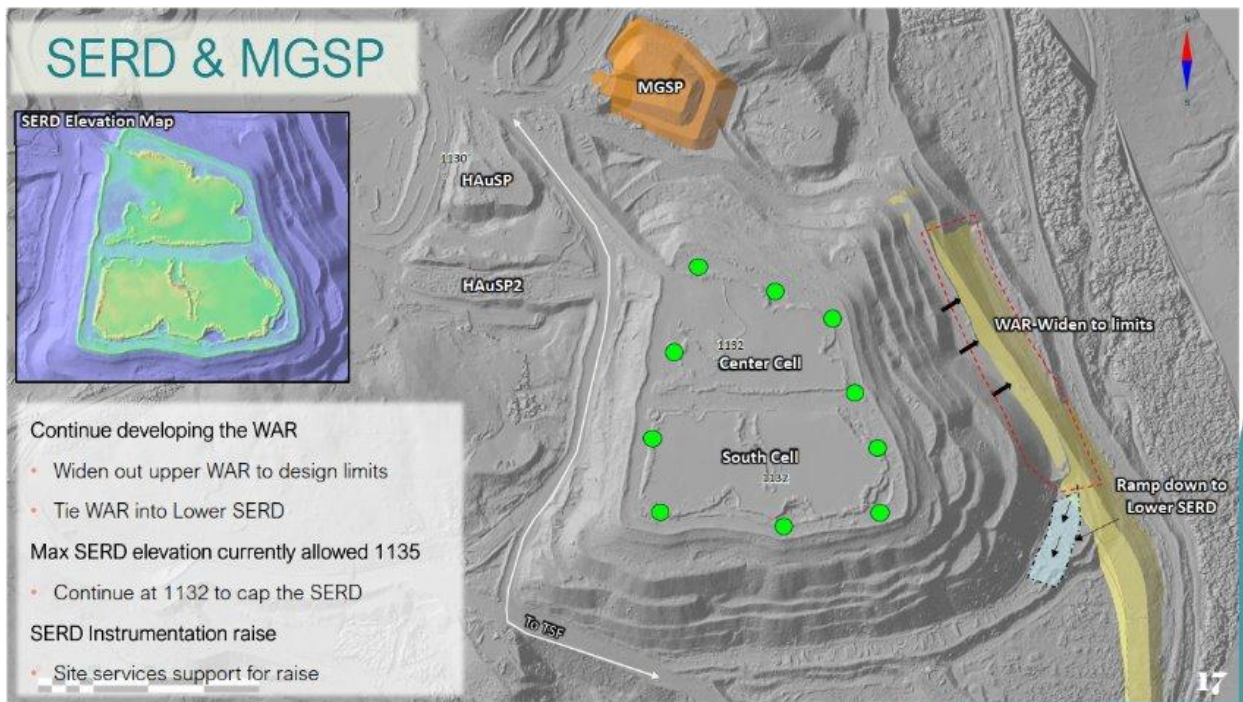
- 2024



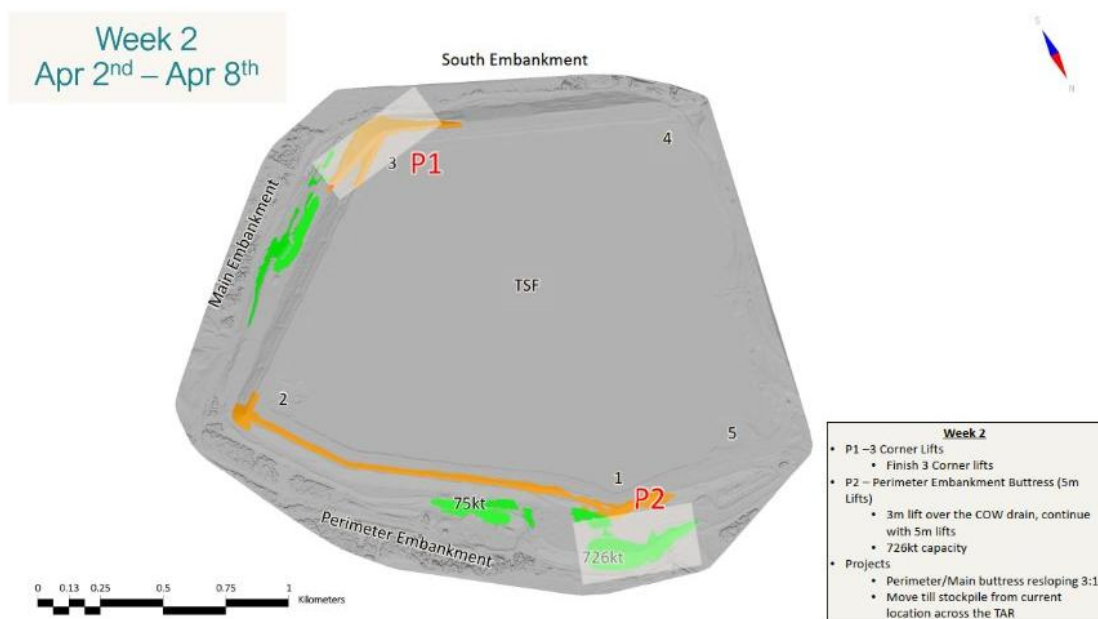
- 2025



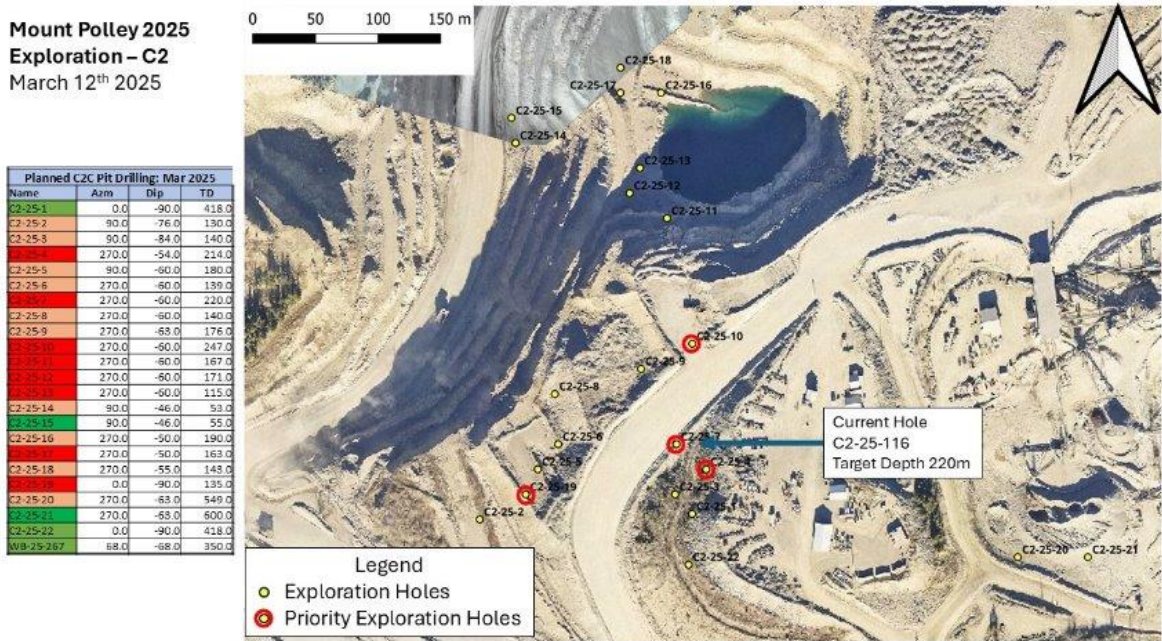
- We installed some sensors in the pad of the SERD. We continue to cap it. I believe we are at 4.7 of the 5m to complete the design on that facility.



- TSF Construction- This is a diagram showing the current construction. Lime green is what is being constructed on the buttress and the orange is what is being constructed on the embankments. We are very close to completing the design work up to the 970m elevation at a 2:1 slope. Priority 1 is corner 3 and priority 2 is the buttress at corner 1.



- Exploration- I'm not sure how many of these holes they've done. There are some potential targets that they want to get access to. We drilled ~20 holes last year but did not find anything worth mining other than what was known in the bottom of the pit to my knowledge.



- Human Resources
 - We are hiring. Operations are in full swing and we are looking for new members to join our team.

Count of Personnel No.	Column Labels	As of Mar. 17, 2025	
		Inactive	Grand Total
Row Labels	Active		
Administration		22	22
Mag Plant		3	3
Mill Maintenance		26	26
Mill Operations		77	81
Mine Maintenance		52	55
Mine Operations		170	183
MP management		12	12
Grand Total		362	382

- Seeking tradespeople, mechanics, welders, millwrights, pipefitters, electricians and carpenters
- Nearing full staffed in some departments
- Seeking to fill technical positions, engineers and planners

- Reclamation and Remediation
 - Terrestrial remediation planned for removal of a couple of roads in the Hazeltine Creek area.
 - Planting of ~10,000 stems on the mine site. We did some recontouring on the East Rock Dump last year, that project is not completed but we will be doing some fill planting on some of the other areas on the site.
 - Reclamation research program activities are planned.

Next Meeting

- July 17, 2025 at Mount Polley Mine with a tour to follow
- If you have specific elements of the Mount Polley project that you would like to see, please let me know

Meeting End 12:15 pm

Resources

PLC SharePoint Site:

<https://imperialmetals.sharepoint.com/sites/MountPolleyPLC>

BC Ministry of Environment Natural Resource and Enforcement Database:

<https://a100.gov.bc.ca/pub/ocers/searchApproved.do?submitType=menu>

BC Mine Information page:

<https://mines.nrs.gov.bc.ca/>

mountpolley.com

[Mount Polley - Site Journal](#)

imperialmetals.com

[Home | Imperial Metals](#)

[Facebook.com/mountpolley](https://facebook.com/mountpolley)

Sentinel Hub Playground

[Explore \(sentinel-hub.com\)](https://explore.sentinel-hub.com)

[Snow Survey Stations Interactive Map \(arcgis.com\)](https://arcgis.com)