



Mount Polley Mining Corporation

an Imperial Metals company
Box 12 • Likely, BC V0L 1N0 • T 250.790.2215

MOUNT POLLEY MINING CORPORATION (MPMC) PUBLIC LIAISON COMMITTEE (PLC) MEETING SUMMARY

Meeting Details

In person Meeting and Conference Call Meeting – General Meeting
General Meeting – Q4 2024

October 3, 2024

9:00 am to 1:00 pm

Meeting held at the Likely Community Hall, 6281 Rosette Lake Road, Likely, BC

Meeting Called by: MPMC Designated Representation

Meeting Chaired by: Gabriel Holmes

Minutes by: Alicia Lalonde

Member	Present	Call-in	Organization
Aaron Higginbottom			T'exelc - Williams Lake First Nation
Abhirosh Chandran		x	Ministry of Environment and Climate Change Strategy
Alan Egilson		x	Ministry of Water, Lands and Resource Stewardship
Alicia Lalonde	x		DWB Consulting (MPMC)
Alex Gresl			Williams Lake Chamber of Commerce
Ann Godon		x	Ministry of Environment and Climate Change Strategy
Bee Hooker			Big Lake Community
Bill Carruthers			Williams Lake Community
Chris Garda			Ministry of Environment and Climate Change Strategy
Christine McLean			Mitchell Bay Community
Chris Swan			Ministry of Water, Lands and Resource Stewardship
Darren Sargeant			Xat'sùll - Soda Creek First Nation
Don Parsons	x		Imperial Metals (MPMC)
Doug Watt	x		Likely Resident
Emily Sonnag			Xat'sùll - Soda Creek First Nation
Gabriel Holmes	x		Mount Polley Mining Corporation (MPMC)
Jackie Sarginson			MLA Cariboo North Coralee Oaks Office
Jason Raine			University of Northern BC and Quesnel River Research Centre
Jillian Tamblyn			Ministry of Environment and Climate Change Strategy
Johanna Godt		x	Sedgewick Strategies (MPMC)
Kala Ivens		x	T'exelc - Williams Lake First Nation
Kelly Parker			MPMC
Ksenia Kolodka			Xat'sùll - Soda Creek First Nation
Leanne Perrich		x	Interior Health
Linda Bartsch			Horsefly Business
Lisa Kraus			Likely and District Chamber of Commerce
Lyn Anglin			Consultant to Imperial Metals (MPMC)
Mathieu O'Leary			MPMC
Maureen LeBourdais		x	Cariboo Regional District
Micky McIntosh			Likely Resident
Nishitha Singi			T'exelc - Williams Lake First Nation
Rebecca Knight			T'exelc - Williams Lake First Nation
Richard Holmes			Little Lake Community
Steve Hocquard			Horsefly Community
Surinderpal Rathor		x	Williams Lake Government
Tara Cadeau		x	Ministry of Energy, Mines, and Low Carbon Innovation
Vicki Bourdrias			Ministry of Transportation and Infrastructure
Victoria Stevens		x	Ministry of Energy, Mines, and Low Carbon Innovation
Walt Cobb			Williams Lake Resident
Yoana Dinkova		x	Xat'sùll - Soda Creek First Nation
Guests			
Lee Nikl		x	WSP

Meeting Start: 9:10 am

Roll Call – Introductions and acknowledgements – Gabriel Holmes

- I'd like to acknowledge that we operate on traditional territories and work in partnership with the Williams Lake and Xat'sūll First Nations.
- We do have a guest attending today at the request of MPMC, Lee Nikl from WSP will be giving a presentation that he recently gave to the Canadian Dam Association.

Additions to Agenda, and Approval of Agenda – Gabriel Holmes

- As I have indicated in the agenda, we are going to go over the following:
 - PLC Membership and Terms of Reference Review
 - Request to refer to Public Servants by their agencies rather than specific persons
 - ENV/EMLI Discussion/Compliance Review
 - ENV Inspection Report 229751
 - EMLI Inspection Report 231967
 - Permitting/Amendment Applications
 - Environmental Monitoring Update
 - Discharge/WTP Update
 - Water Management Update
 - Remediation/Reclamation Update
 - Mining Update
 - Tailings Storage Facility Update
 - Public Meeting
 - Roundtable Discussion
 - PLC Questions/Comments
 - Next Meeting – January 2025
- Does anyone have additions to the agenda?
 - Yes- A presentation by Lee Nikl "Quantification of Successful Remediation of the Environmental Consequences Resulting from a Major Mine Tailings Storage Facility Breach" 2024, Lee Nikl et al.
- Agenda approved.
- Action Items from Last Meeting
 - Add W10 to show impacts from construction on total phosphorus (EDC-01a)- there are 4 slides included in this presentation from the last meeting which we will discuss in a number of slides
 - Precautionary principle in provincial and federal law
 - The Precautionary Principle is found in guiding principles of the *Canadian Environmental Protection Act*.
 - Precautionary principle: The government's actions to protect the environment and health are guided by the precautionary principle, which states that "where there are threats of serious or irreversible damage, lack of full scientific certainty shall not be used as a reason for postponing cost-effective measures to prevent environmental degradation".

Government of Canada, 1999, Guide to understanding the Canadian Environmental Protection Act: chapter 3, 3. CEPA 1999 guiding principles, <https://www.canada.ca/en/environment-climate-change/services/canadian-environmental-protection-act-registry/publications/guide-to-understanding/chapter-3.html>

- Unfortunately: “The precautionary principle has been applied inconsistently or misapplied in Canadian legislation and jurisprudence alike. In this regard, the principle is frequently poorly defined in legislation or not defined at all. The precautionary approach is often incorporated into legislation instead of the precautionary principle. It is not clear what certain formulations of the precautionary principle or the precautionary approach require of proponents or decision-makers. There is little to no government guidance on the interpretation and application of the precautionary principle to help remedy this uncertainty.

Courts and tribunals, for their part, disagree on virtually every aspect of the precautionary principle, including its purpose, its status at law, its applicability and its content. Consequently, certain courts and tribunals have shied away from applying the precautionary principle. The precautionary principle may ultimately fall into disuse if it is not interpreted and applied in a more consistent and rigorous fashion moving forward”. Birchall Et al, (2017), Navigating Environmental Risk: When and How to Apply the Precautionary Principle, Willms & Shier Environmental Lawyers LLP

- Tailings Storage Facility Update- slides included further into presentation

PLC Membership and Terms of Reference (ToR) Review – Gabriel Holmes

- We have some new members. Chris Garda is sitting in for Erin Rainey for ENV for a period of time; Tara Cadeau from EMLI is back with us; From Water, Lands and Resource Stewardship (WLRS), Alan Egilson and Chris Swan; From MOTI, Vicki Bourdrias; From the Interior Health authority, Leanne Perrich; From Xatśūll First Nation, Yoana was hired as Environmental and Regulatory Coordinator. I haven’t heard back from the United Steel Workers. Maybe for the next revision to the ToR we should consider removing the MPMC employee representative. I contacted Deborah Portman at ECCC and have not heard back. I may have a representative from DFO. Coincidentally, we also have an inspection next week with DFO looking at areas affected by the 2014 TSF dam breach.
- Fraser Basin Council expressed some interest but I can follow up with them.
- The Horsefly River Roundtable is coming to the mine for a meeting next week so I will discuss membership with them then.

Member Organization	Allocated Seats	Name	
BC Ministry of Indigenous Relations and Reconciliation	1	Vacant	
BC Ministry of Agriculture*	1	Vacant	
BC Ministry of Environment and Climate Change Strategy (ENV)	2	Abhirosh Chandran, Ann Godon, Chris Garda, Jillian Tamblyn	
BC Ministry of Energy and Mines and Petroleum Resources	1	Victoria Stevens, Tara Cadeau	
BC Ministry of Forests, Lands and Natural Resource Operations	1	Alan Eilson, Chris Swan	
BC Ministry of Transportation and Infrastructure	1	Vickie Boudrias	
Interior Health Authority*	1	Leanne Perrich	
Environment and Climate Change Canada*	1	Vacant	
Department of Fisheries and Oceans Canada*	1	Vacant	
Xatsull First Nation	1	Emily Sonntag, Yoana Dinkova	
Williams Lake First Nation	1	Aaron Higginbottom, Nishitha Singi, Kala Ivens	
Mount Polley Mining Corporation	2	Gabriel Holmes, Matt O'Leary, Don Parsons (Imperial Metals), Lyn Anglin (Anglin and Associates), Alicia Lalonde (DWB), Johanna Godt (Sedgwick)	
University of Northern British Columbia	1	Jason Raine	
Cariboo Regional District	1	Maureen LeBourdais	
Environmental Advocacy Group	2	Christine Mclean (Concerned Citizens of Queanell Lake), 1 seat vacant	
Local communities ¹ - Community Member	1 each	Doug Watt (Likely), Steve Hoqard (Horsefly), Richard Holmes (Little Lake), Mickey McIntosh (Likely), Bill Carruthers (Williams Lake), Walt Cobb	8 Members Total
Local communities - Business Member	1 each	Bee Hooker (Big Lake), Linda Barsch (Horsefly)	8 Members Total
Local communities - Government Member	1 each	Jackie Sarginson, Surinderpal Rathor	8 Members Total
Local communities - Chamber of Commerce Member	1 each	Lisa Kraus (LDCC), Alex Greal (WLCC)	8 Members Total
United Steel Workers	1	Vacant	
MPMC Employee Representative	1	Vacant	
The Interested Public (if determined by the membership of the PLC that additional representation of the public is needed)	1	Vacant	

* These members will be invited to PLC meetings when there are topics relevant to their mandates to discuss
¹ Local communities are defined in the Definitions section - 150 Mile House, Big Lake, Horsefly, Likely, Mitchell Bay, Morehead, Little Lake, Williams

- Reminder of roles and responsibilities
 - I need to remind everyone of their roles and responsibilities as outlined in the ToR and ask that everyone review it, specifically in Appendix A Code of Ethics, Section 1B: “Every individual who holds a position as a member has a responsibility to the PLC to commit sufficient amounts of time to effectively share correct and truthful information back and forth between the PLC and respective communities and organizations”.
 - We had some false statements made to the media and the public. It did initiate a bunch of discussion that was unnecessary regarding the Mount Polley operations. It could have been avoided if the true and correct information was shared.
- Request to refer to Public Servants by their respective agencies rather than specific persons
 - We had a request from one of the regulatory agencies to refer to Public Servants by their respective agencies rather than specific persons in our meeting minutes.
 - After discussion amongst the committee members, it was agreed upon that references to Public Servants not present in the meetings or who are not members of the PLC will be referred to by their respective agencies. Processes referred to in meetings will also be referred to by the agency and not individual Public Servants.
 - When we send out the meeting minutes and summary for review, please review them. It is an opportunity for each of us to correct the record as we see it. We can then discuss any inconsistencies in the meeting minutes and potential changes. What we discussed internally for meeting notes/minutes, those are for committee members exclusively. Not for public consumption or any other consumption. The meeting summary is for public consumption.

Communications

- We are always asking ourselves if we are good communicators and if we are providing the information that everybody wants. There is always room for improvement.
- It is important that we communicate to the regulators and stakeholders regularly, our doors are always open.
- We are committed to our communications plan.
- We have the PLC, Sharepoint and other websites, meetings, calls and presentations, tours and reporting to convey information.
- Safety:
 - Mount Polley Mining Corporation is committed to providing a safe and inclusive work environment to all its workers, staff, contractors and guests.
 - Initiatives:
 - Quarterly site wide communication meetings- it is a mandatory meeting for every employee and is an opportunity to speak with the employees about what is going on, they were temporarily suspended while the manager was off with some health issues but we will be kicking them off again this month.
 - Regularly scheduled departmental safety meetings (monthly) and Shift Cycle Audits (each department conducts a weekly audit of their work area where hazards and potential hazards are identified and passed onto the cross shift)
 - Joint Occupational Health and Safety and Environmental Committee (meet monthly with tours)
 - Mine Rescue training weekly
 - Safety statistics up to the end of September are included in the table below. YTD we've had 4 lost time accidents, 12 medical aids- 3 in September, 34 first aids- 5 in September, 11 reportable incidents- 3 in September and 0 reportable spills. We have had a number of internal spills but none that required external reporting. Those reportable spills- recently we have had a number of fires on some equipment or the fire suppression system discharged.

Reportable Injuries/ Incidents		
September	MTD	YTD
Lost Time Accident	0	4
Medical Aid	3	12
First Aid	5	34
Reportable Incident	3	11
Spills – Reportable (BC-Env)	0	0

- The MPMC Community Initiatives Committee will continue with community contributions in 2024 and will be committing to many of the same organizations as in 2023.

- To date: Fishing derby, Mining for Miracles, Heavy Metal Rocks, indoor rodeo, Williams Lake stampede, performances in the park, Cedar City museum, MPMC Family Day, Big Lake Volunteer Fire Rescue, Speaking our Truth Pow Wow, Father's Day Pow Wow and Orange Shirt Day

ENV/EMLI Discussion/ Compliance Review

- Let's open up the floor to ENV and EMLI. Do you have anything to bring to the committee's attention regarding compliance from a regulatory perspective?
- AG: There have been two inspection reports from our Compliance and Environmental Enforcement Branch, they have reviewed the period from February 1, 2020 until the permit was amended again in December 2022. Each of those reports noted some non-compliances which I will let you speak to. There were warning letters issued for each report. You can see both those inspections on our natural resource sector and environmental compliance website. If you key in the inspection number it will generate the report. All of the information that was sent to Mount Polley is available online. A third inspection to cover the period from December 1, 2022 will be covered this fall. Abhi and I will be reviewing the Joint Application amendment. We have paused on that right now as we wait for some comments and information requests from Mount Polley.
- Abhirosh Chandran (AC): I don't have anything to add.
- VS: I don't have anything right now.
- ENV Inspection Report #229751: As Ann indicated, these are desktop reviews with periods from several years ago regarding findings and reporting that we've done over the years. Most of these non-compliances are issues that we have reported and investigated in the past. Things like exceedances at the WTP.
 - In April 2020, we had an exceedance of the table values at HAD-3, our discharge point. Whenever we have those, we not only report them to the regulatory agencies but to the PLC and we send an investigation report out on them. Any PLC member that has been on the committee since 2020 will be familiar with that.
 - In 2020 we also had the releases of mine affected water to the environment. We had a melting event that caused three unauthorized discharge events on the mine site from April 20-27, 2020. We have reported out on those and investigated them.
 - "Maintain and implement a Sediment and Erosion Control Plan developed by a Qualified Professional (QP)". We had a plan that was not developed by a QP but we have since had that plan rewritten by a Qualified Professional.
 - Our Nitrogen Management Plan was the same thing. We realized that draft plan that we have has not been finalized so DWB has been retained to rewrite that. That is still a non-compliance though the work is underway.
 - Another exceedance at the WTP where we had a copper exceedance in November 2020. Actions to be taken: Be sure to operate the Veolia Actiflo WTP to remove contaminants present in the mine site contact water to meet the discharge requirements per Section 1.1.2.4 specifically Table 1. That is one that we have had issues with in the past with our WTP specifically during spring freshet.

- We did not do a pipeline inspection in one month and we are required to do it on a monthly basis. We did not do one in October 2020. We have since conducted monthly pipeline inspections.
- We didn't report a non-compliance in a timely fashion. We are supposed to immediately notify the Director of a non-compliance. For the omission of the pipeline inspection, we didn't realize it immediately, we didn't realize until November that we didn't do one in October so we were out of compliance on that. We have talked about this internally not only with the environmental group but also with management.

Past non-compliances, you should all be familiar with. The other report, I don't have with me as I didn't want to discuss it until we've had time to review it. These reports are publicly available and posted on the government website within 7 days of the inspection report being issued to Mount Polley. Same with the EMLI inspections.

- EMLI Inspection Report #231967: An onsite reclamation inspection was conducted on August 28, 2024. We looked at soil stockpiling operations and progressive reclamation. There were some compliance related issues.
 - We were ordered to ensure that soil stockpiles are clearly marked and that they are protected during construction and mine operations. We ordered ~20 new signs and installed them on our soil stockpiles. We have soil stockpiles all over the mine site and over time they begin to look like part of the landscape and sometimes our operations don't know that they are a site asset. Every now and again we will disturb one of our soil stockpiles. I have discussed that with the compliance inspector in the past. One of the risks is that every time we disturb one of those stockpiles, we degrade the soil quality. The biological activity within those soil stockpiles needs to continue on. We will continue to put up more signage around the mine site to protect those assets.
 - In our Reclamation and Closure Plan (RCP), we indicate that we are going to mine sources of glacial till for subsoils on our mine reclamation areas. Our soil inventory had a deficit of some 1 million m³ and we indicated in our RCP that we would just mine it out of our borrows but the compliance inspector requested that we formalize that and prepare a specific contingency plan that identifies the locations and volumes of the soil that we are going to mine from there to satisfy our soil requirements at closure. That is another job that we have DWB working on for us in the coming months.
 - There was one other advisory item regarding plans being in accordance with updated guidance documents. Expectations from the regulatory agencies change periodically and sometimes the proponents do not realize that. The inspector indicated that they have been adding this general advisory to all of their inspection reports to ensure that the proponents are aware of these changes.

Permitting/Amendment Applications – Don Parsons (DP)

Construction & Permitting Activities	Resp	2024						2025					
		Jul	Aug	Sep	Oct	Nov	Dec	Jan	Feb	Mar	Apr	May	Jun
Mine Site Construction													
Phase 5 NAG Borrow Mining > 1120m	RT												
Phase 5 Mining - continued	RT												
TSF Construction < 970m													
Footprint Preparation	MO												
Reslope Downstream Embankments	MO												
Buttress Extension	MO												
TSF Construction > 970m													
Till Core Lift (0.6 meter)	MO												
TSF Lift (970.6m - 973.0m)	MO												
Water Management Infrastructure	MO												
Proposed Permitting Path													
Notice of Departure - TSF 970m to 970.6m	DP/MO												
M200 Application - TSF 970m to 974m	DP												
Joint Application - LoM Extension	DP												
M200 Application - TSF 974m to 987m	DP												
EoR / QP Deliverables													
TSF 987m Design Report	GP									X			

EoR / QP / Responsible Person

RT - Richard Tuohey
MO - Mathieu O'Leary
DP - Don Parsons
GP - German Pizarro/Sophie Bainbridge

Legend

Permitted
None Permitted Work Scheduled
Construction Halt Due to Winter
Permitting Activities

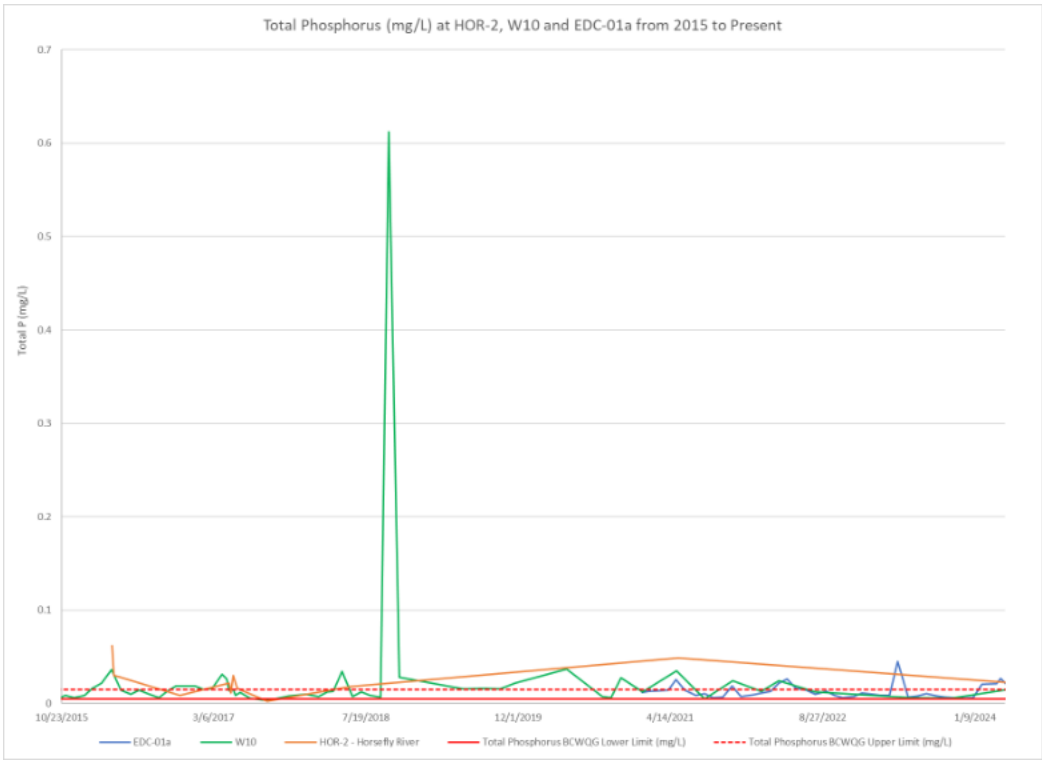
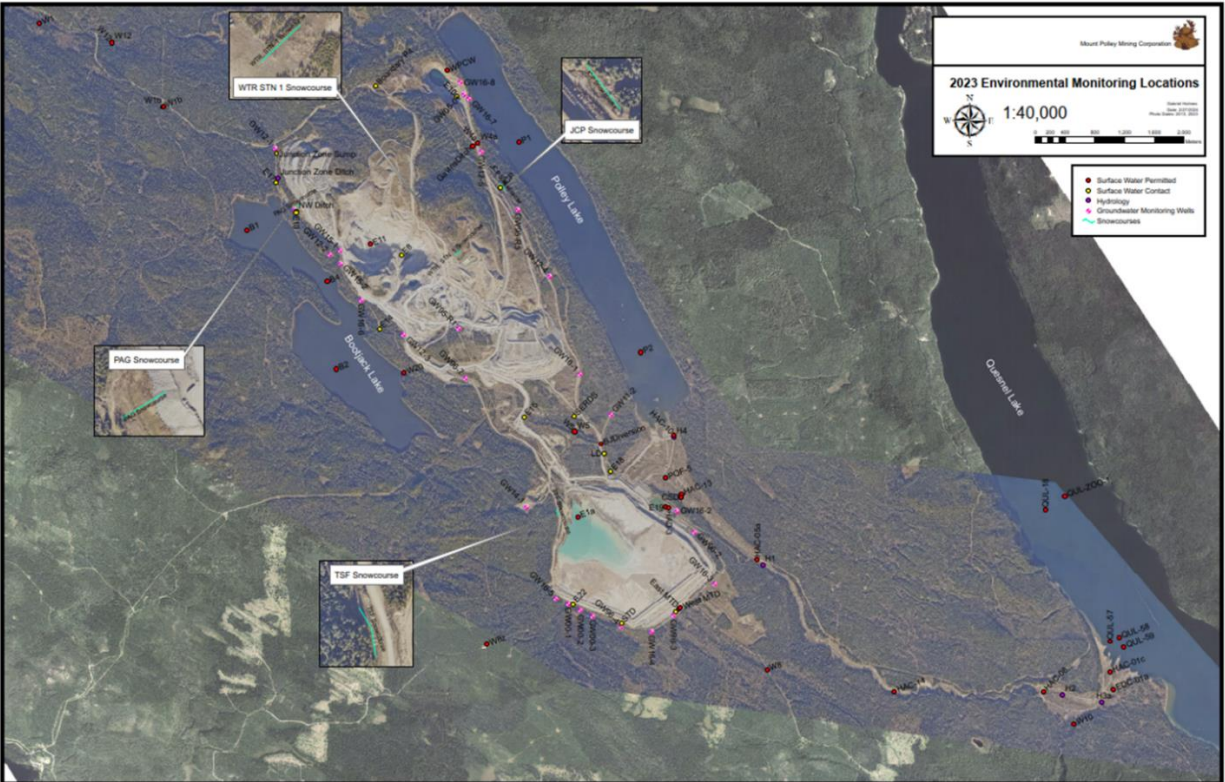
- Anything in green is what we have been permitted or authorized to do. Of course, what we are working on right now is the Springer Pit expansion pushback in the NAG borrow area on benches above the 1120m elevation. We are authorized to work in Springer Phase 5 pit and we will likely be down to the 1120m bench by February. To continue mining in Phase 5 we will need authorization and that's been applied for through the Springer Expansion Life of Mine Permit Application. Down at the TSF area below 970m, we are working on expanding the footprint, resloping the downstream embankments and buttress extensions. That work will carry us into February and maybe even farther. Once we get into April we will be wanting to put material on top of the dam, the intention being that we want to get to 973m by the end of next year. We have submitted a Notice of Departure (NoD) to EMLI to put 0.6m on this year. That will cut down on next years' workload and also give us an additional 1.2 million m³ of storage for next spring. Time is running out on that opportunity. By the end of November usually freeze up prevents placing till until spring time the following year. We only have a limited window there but we would like to get 0.6m on top of the dam to get to 970.6m. Water management infrastructure will also be put into place. Permanent water management infrastructure for the 970m lift will start getting installed in May-June of next year. There are a number of permitting directions. We have the NoD that is in front of EMLI right now to put on the 0.6m. There is the M-200 application to go from 970m-974m which should take us into some portion of 2026. There's the joint application for the LoM Expansion to 2031 which is in front of both ministries right now and at some point in the future when the dam has been designed, we have a project to lift the dam from 974m to 987m to accommodate the tailings that would be produced in the LoM plan, the Springer Expansion plan. We have our EoR working on the 987m design report and we expect to see that sometime in February 2025.
- Permitting Action Items
 - Joint Permit Amendment Application- LoM Plan (M-200 and PE11678)

- An Updated Application was submitted on August 1 responding to the Mine Review Committee's (MRC) Request For Information up to that time. With the timelines at the moment and the amount of work going into the responses and comments, we have not got our interim lift of 4m approved yet so that is why the NoD has been put in place to put 0.6m on top of the dam in 2024
 - A Notice of Departure to place 0.6m in 2024 was submitted to EMLI
- Interim TSF Lift of 4 meters to 974 m
 - MPMC responded to MRC comments, we have also been looking into the Permitted Mine Area perimeter that has recently been shared with us through EMLI and we are reviewing that to make sure that there is enough room in that permitted area to do the work that we need to get the lift to 974m.
- Springer Expansion Project (Life-of Mine Plan)
 - MPMC responding to outstanding EMLI geoscience comments
 - MPMC Engagement Report and Reclamation Liability Cost Estimate still required
- Permit Amendment Application
 - TSF Lift of 13m to 987m
 - TSF to 987m Design Report- submit to EMLI when design finalized
- Environmental Protection Notice
 - We received 4 responses to the Environmental Protection Notice posted on July 22, 2024 from local residents and advocacy groups. MPMC provided responses on September 19, 2024.

Environmental Monitoring Update – Gabriel Holmes

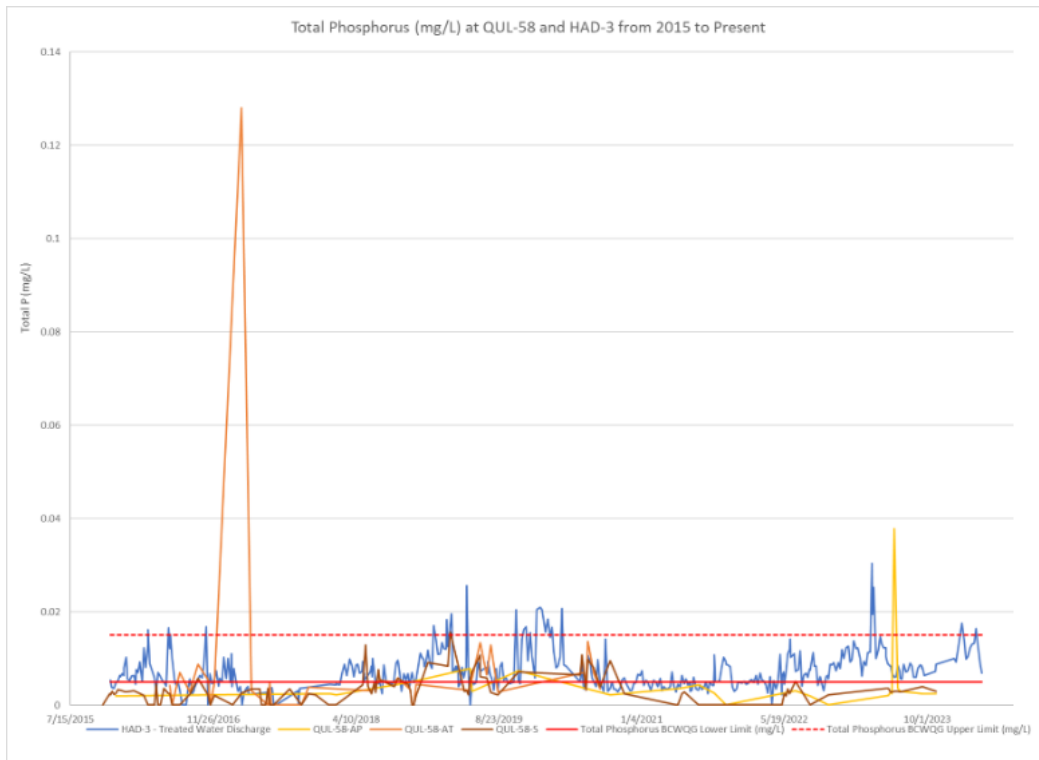
- Waste Management
 - We generate a lot of waste at a facility such as this and it is important that it be disposed of in a responsible fashion.
 - We have a permitted landfill (under the *Environmental Management Act [EMA]*) on site and have many recycling initiatives underway.
 - We are all responsible for our own waste.
 - Clean up and proper disposal of waste is part of our job.
 - Applicable regulations:
 - *EMA*
 - Overarching document that governs all authorizations and prohibitions
 - Provides general provisions and regulations
 - Outlines compliance, and offences and penalties
 - Hazardous Waste Regulation
 - Waste piles, spills, storage/transportation

- Ministry of Environment Permit PR 14590
 - Landfill, cardboard/paper recycling, food (putrescible waste, scrap metal)
- We have independent management waste streams for: food waste, drink containers, paper, cardboard, 5-gallon pails, etc.
- GFL Environmental is the service provider for hazardous and non-hazardous waste, they take our waste oil, rags, etc.
- Renovated scrap metal recycling area- We had ABC Recycling here and they took many loads offsite. This facility will be used for scrap steel, aluminum, wire, metal, mill liners, etc.
- Recent and ongoing monitoring activities completed in Q3 2024:
 - When in operation, weekly Water Treatment Plant (WTP) water quality sampling including monthly/quarterly/semi-annual toxicity sampling
 - Monthly water quality sampling at Hazeltine Creek including selenium speciation
 - Monthly and quarterly water quality sampling of surface and mine affected waters including groundwater and mine site seepage- we have our fall seep sampling event in the next couple of weeks
 - Monitoring in Polley, Bootjack and Quesnel Lakes
 - Spawning surveys, vegetation surveys, avian point counts, fish tissues, plankton and habitat assessments- we have more fish tissue sampling scheduled for the 15th, Minnow will be out on the lake conducting that work
 - Wildlife monitoring, photo interpretation- we have 40 wildlife cameras set up around the mine site and reference areas capturing small and large wildlife species
 - Microbiological monitoring (coliform/E.coli)- in the areas of the mine where we have workers interacting with tap water (in our dries, kitchens, etc.), if we get a result that is above the detection limit we report it immediately to our Environmental Health Officer at Interior Health, we had once recently, one of our duplicate samples had a microbiological count of 1 MPN/100mL, we want the result to be less than the detection limit so we reported it to our Environmental Health Officer and did some confirmatory sampling which came back below the detection limit
 - Water quality sampling and monitoring of Springer, Cariboo and Wight Pits (end-of-pipe)- limnological profiling in Wight Pit
 - Data interpretation
 - Monthly/quarterly site inspections including waste management
 - 2023 CEMP review underway (by ENV and First Nations)
 - Reporting- Monthly, quarterly and annual reporting requirements. We have reports for ENV, EMLI and Interior Health
- This is a map of our monitoring locations around the site and our snow courses where we monitor snowpack. This map is included in our annual report. I update it annually.

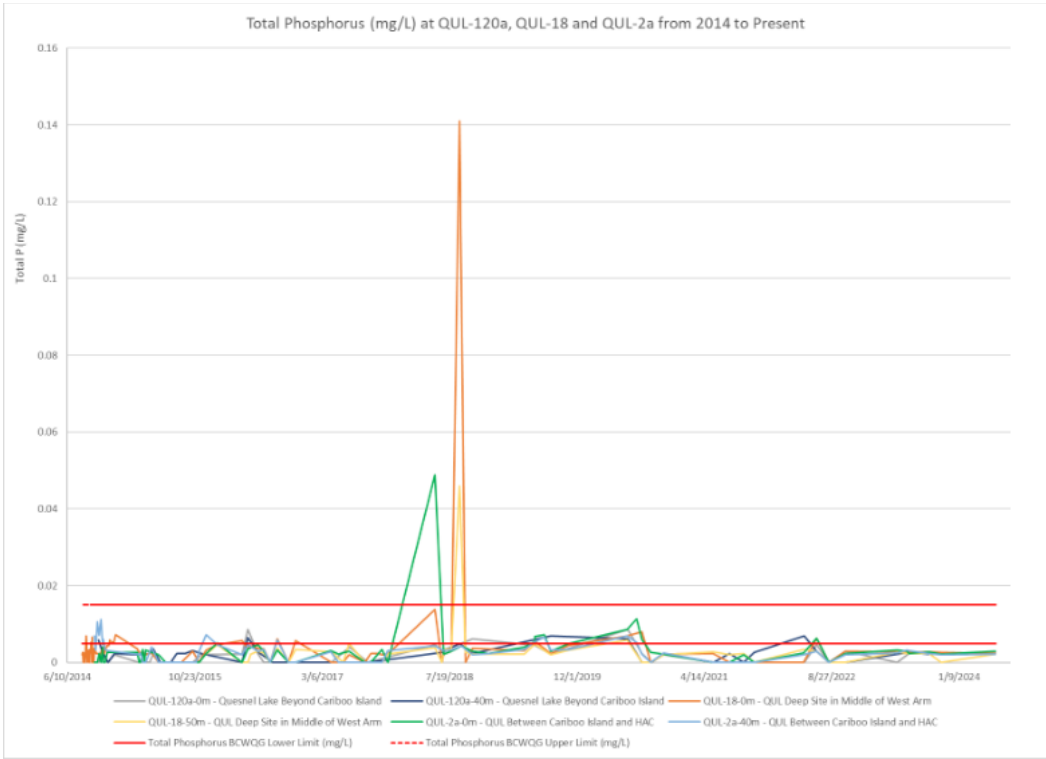


- This chart was updated with the W10 data. This is the only chart that we changed, the next three are the same as in the last meeting’s presentation. It shows the total phosphorus in the Horsefly River, at EDC-01a which is the creek just upstream of where it enters the lake and W10 which is upstream of the affected area in Edney Creek. It does look like above and below the impacted

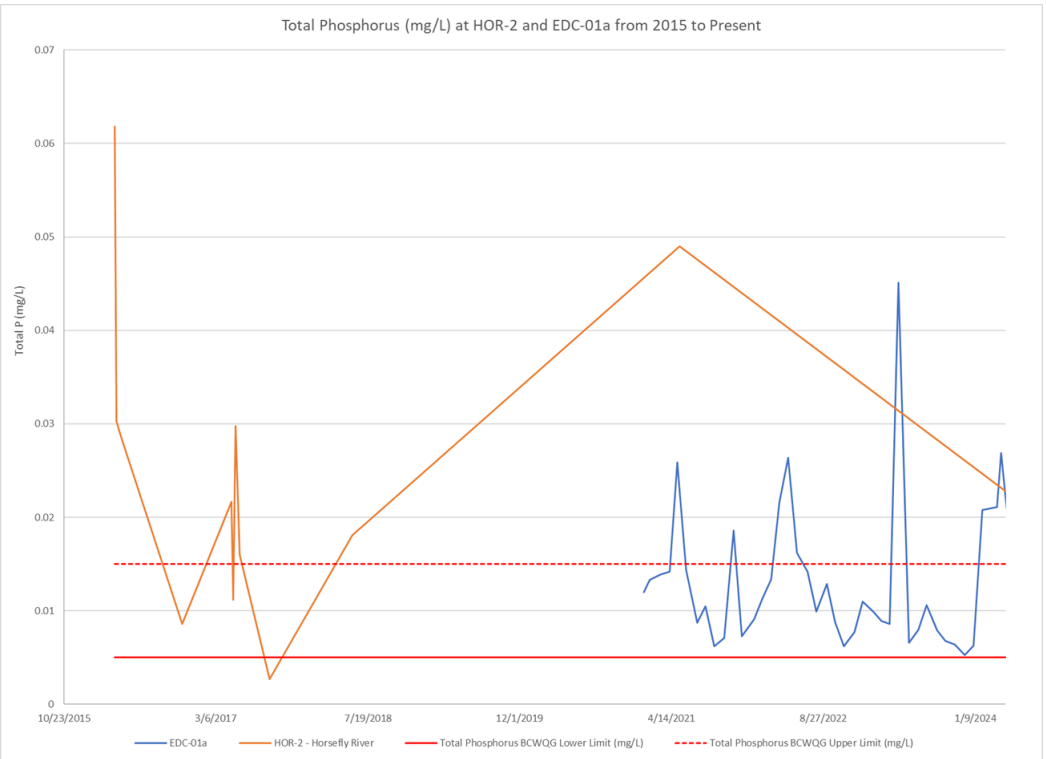
area with regard to total phosphorus it is pretty similar over the last few years. We ceased construction in 2021 in the creek and those lines track pretty similarly throughout that period. We continue to monitor that site. All of this data is available in our annual reports as well.



- This chart shows total phosphorus at HAD-3, our discharge, and QUL-58 which is in the Initial Dilution Zone (IDZ) in Quesnel Lake about 100 m away from the diffusers. The blue line is the total phosphorus and the two red lines are the upper and lower phosphorus limit. AP is above plume, AT is above thermocline, S is surface and you can see Quesnel Lake at the IDZ is routinely below the lower limit.



- This chart shows QUL-120a which is upstream beyond Cariboo Island, QUL-18 which is between Hazeltine Creek and Cedar Point Park and QUL-2a which is offshore of Winkley Creek. So, these are farther field both upstream and downstream of the discharge location. Results are typically below the lower total phosphorus guideline.

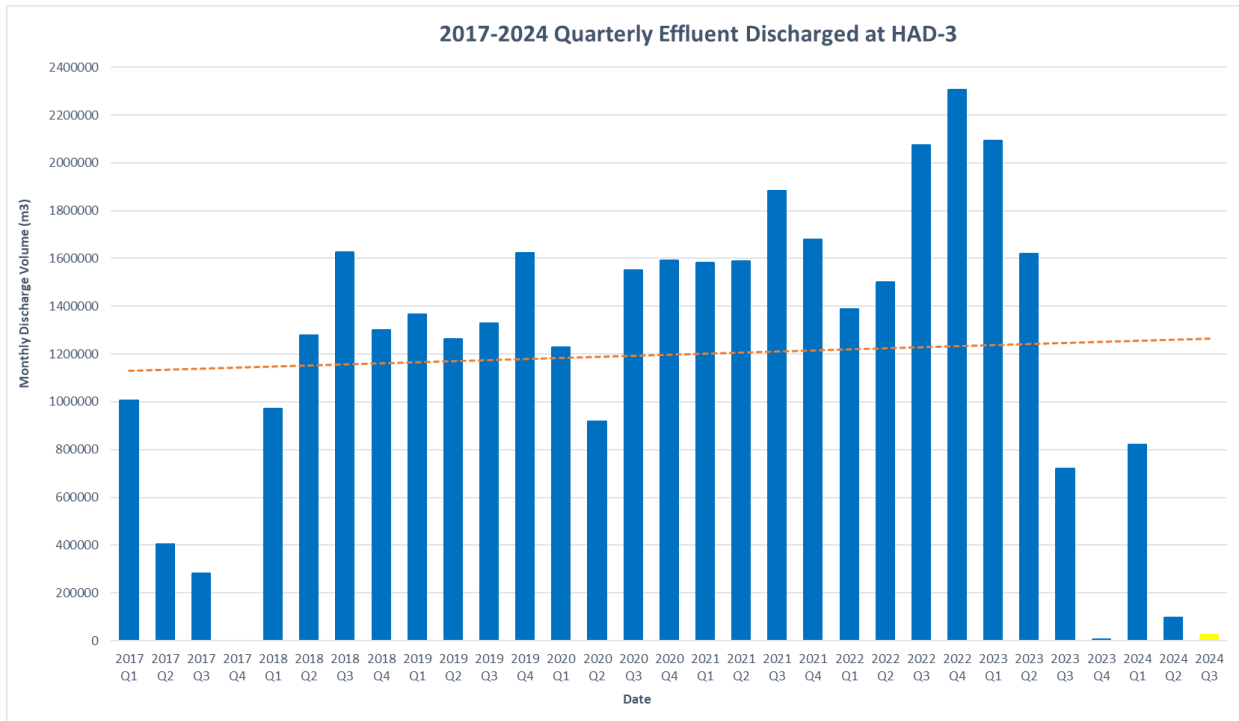


- This chart shows the total phosphorus in the Horsefly River compared to EDC-01a which is the creek just upstream of where it enters the lake. When we talk about loading in the lake, we look at the sources. One of the things we wanted to demonstrate here is we do see the Horsefly River depositing large volumes of total phosphorus on an annual basis into the lake.

Water Management Update – Gabriel Holmes

- Discharge/WTP Update

- Discharge was discontinuous in Q3.
- A total of 25,321 m³ was discharged in Q3 with an average discharge rate of ~0.010 m³/s.
- The authorized annual average rate of discharge is 29,000 m³/day.
- The maximum authorized rate of discharge is 52,000 m³/day.

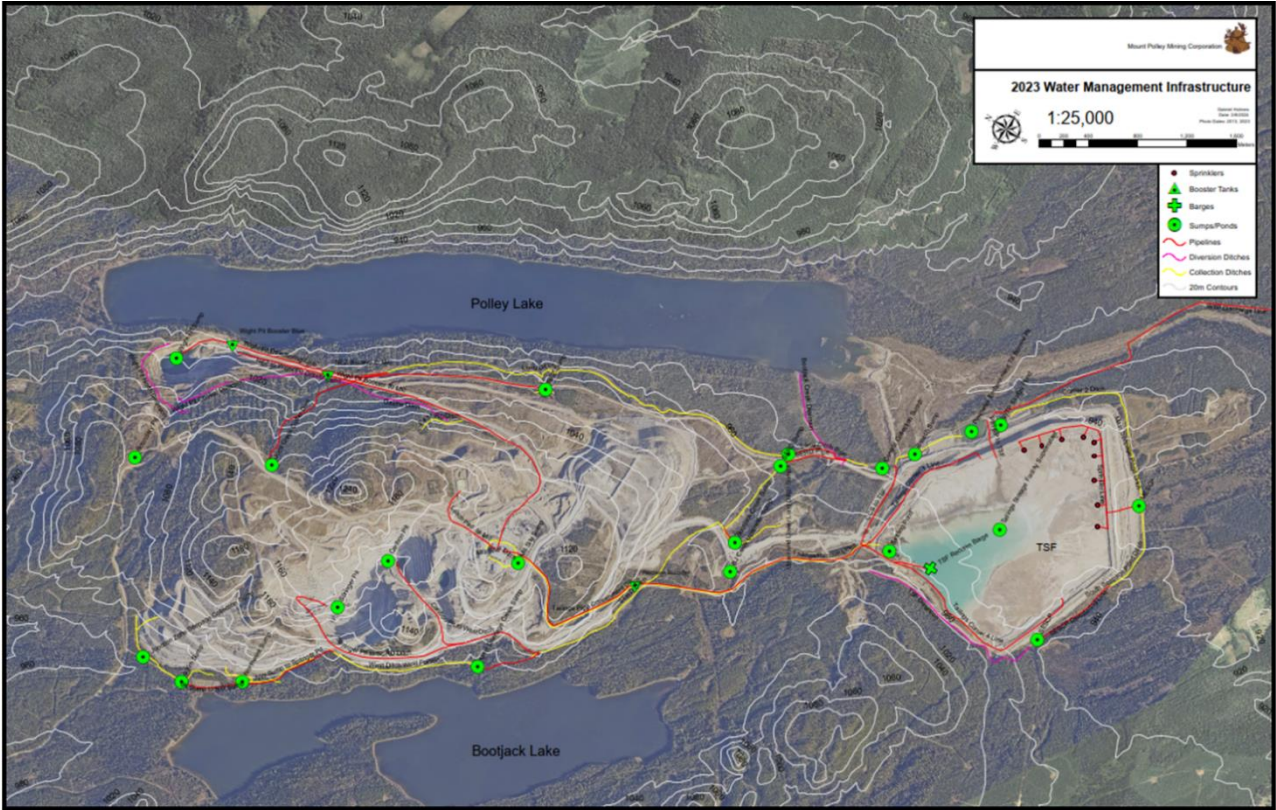


- This is a summary of our total discharge per quarter since 2017. In the last four quarters you can see that we have only discharged about half of what we normally discharge in a year. Currently we do not have a ton of water on the site. We consume 215,000 m³ of water per month in the TSF. That water is not available. We are planning on running the plant in the future but we aren't sure when. We have to sort out some water management infrastructure down at the plant (WTP) as a result of the construction on the TSF.

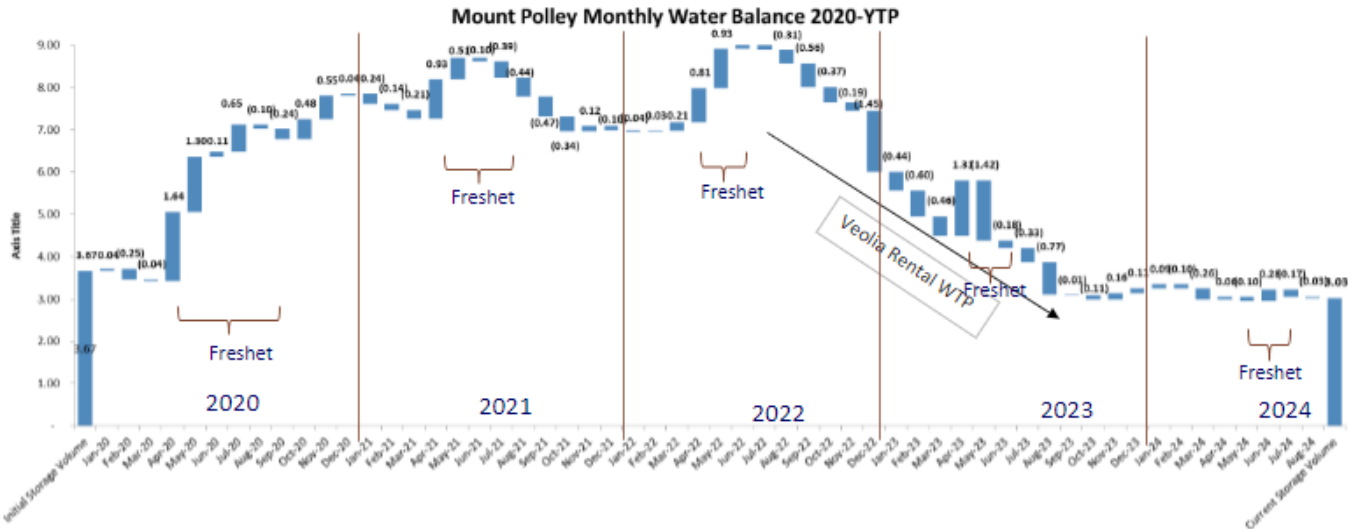
- Water Management Infrastructure

- This map shows our diversion ditches, collection ditches, pipelines, sumps and ponds. These are all locations that we monitor through our contact water sampling. This was updated in our 2023 annual reporting. We will have the pipeline from the SERDS sump down to the Wight Pit on 2024 map. Each one of these elements is absolutely critical to the water management operations that

we have. Any one of these things fail and it could result in an (potential) unauthorized discharge to the environment. We will keep you informed of any challenges with our water management at Mount Polley. It is an ongoing effort.



- Year over year water balance comparisons
 - This is a water balance waterfall which shows a 3-year period of our water accumulation and discharge over time. You can see between 2023 and 2024 we've flatlined because we realized we may have to accumulate some water. When we look at the year over year, we are pretty close to where we were in 2019. We did accumulate a fair amount of water through 2021 and 2022.



Site Water Balance			
	Volume – Sept 24 (Mm ³)	Volume – Sept 10 (Mm ³)	Total Change (Mm ³)
TSF	0.66	0.67	(0.01)
Cariboo Pit	-	-	-
Wight Pit	2.38	2.35	0.03
Total	3.04	3.02	0.02

- As of September 24, the TSF has 0.66 Mm³ of water and the Wight Pit has 2.38 Mm³ for a total of 3.04 Mm³. The Cariboo Pit is basically a sump now, it only stores a very small amount of water. We will likely stop reporting on it because the water volumes are so small. We continue to use the Wight Pit for surplus water storage. This is updated on a daily basis. Our instrumentation tech collects all of the relevant survey data, updates the data and provides a weekly summary to the EoR (TSF Engineer of Record).
- Here is a snapshot of our TSF Dashboard. Our instrumentation tech updates this weekly and it is sent to the EoR. There is a lot of information on here but essentially, it shows all of the elements that are monitored. If anything was in a concerned state it would be highlighted in the tables. It also shows TSF elevations and volumes.

Weekly TSF & Water Management Systems Status

September 24, 2024

Water Management Status		Instrumentation Status	
TSF Pond Elevation	965.64 m	Inclinometers	Within QPO
Pond Freeboard	4.16 m	Piezometers	Within QPO
Supernatant*	0.66 Mm ³	IPI	Waiting for Install
Remaining Storage	4.95 Mm ³	SAA	WSP Provides Review
Min. Till Height	969.80 m	Beach @ Corner 1	> 100 Meters
Depth Under Barge	2.50 m	Beach @ P. Emb	> 100 Meters
Tail. PE Freeboard	- m	Beach @ M. Emb	> 100 Meters
Tail. ME Freeboard	- m	Beach @ S. Emb	> 100 Meters
Tail. SE Freeboard	- m		
WTP Effluent Discharge	0.00 m ³ /h	<i>Refer to TSF Weekly Report</i>	
Wight Water Elevation	910.51 m	Pit Monitors	Good
WP Volume	2.38 Mm ³	<small>**C:\Users\David.Buxton-Gray\OneDrive - Imperial Metals Corporation\General - MP Enviro\TSF\instrumentation\1. TSF Water Balance\TSF Water Balance May 1 2024 v2.xlsx**</small> <small>**QPO Ref #1413803405-74-Ra-51115-QuantitativePerformanceObjectives QMAN_24</small>	

Wed	Thu	Fri	Sat	Sun	Mon	Tue
8° -3°	4° 2°	7° -4°	7° -5°	7° -4°	9° 0°	6° -3°

Pumping/Flow Status					
Location	Pumps	Destination	Max Vol (m ³ /day)	Usage	Approx Vol Pumped (m ³ /day)
WTP	1 of 3	Quesnel Lake	28,000	0%	0
NEZ Booster	2 of 2	Mill	8,200	100%	8,160
NE Z 2 Booster	0 of 2	Mill Process Tank	8,200	100%	8,160
NW Sump	1 of 2	Mine Drainage	20,000	10%	2,000
Wight Pit Booster	1 of 2	NEZ	9,000	95%	8,550
Barge	4 of 4	Booster	80,000	100%	80,000
Wight Pit	0 of 2	Long Ditch	8,712	0%	0
PETBP	0 of 2	TSF	20,000	0%	0
CCS	1 of 3	Wight Pit	12,000	66%	7,875
TSF Booster	5 of 5	Mill	80,000	100%	80,000
Springer Pit	1 of 1	Cariboo Sump	Variable	0%	Variable
Cariboo Booster	1 of 2	To Mill	4,000	31%	1,234
Site Runoff		To Long Ditch	3,500		
Site Runoff		To SERD Ditch	3,800		

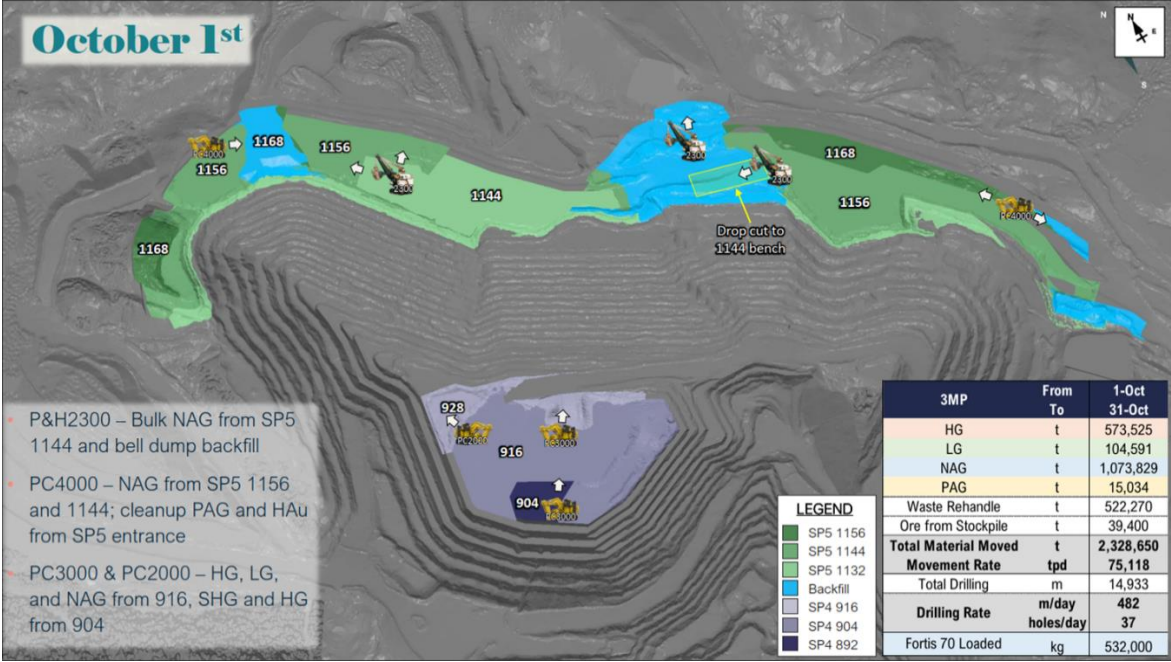
TSF Elevations

TSF Volume

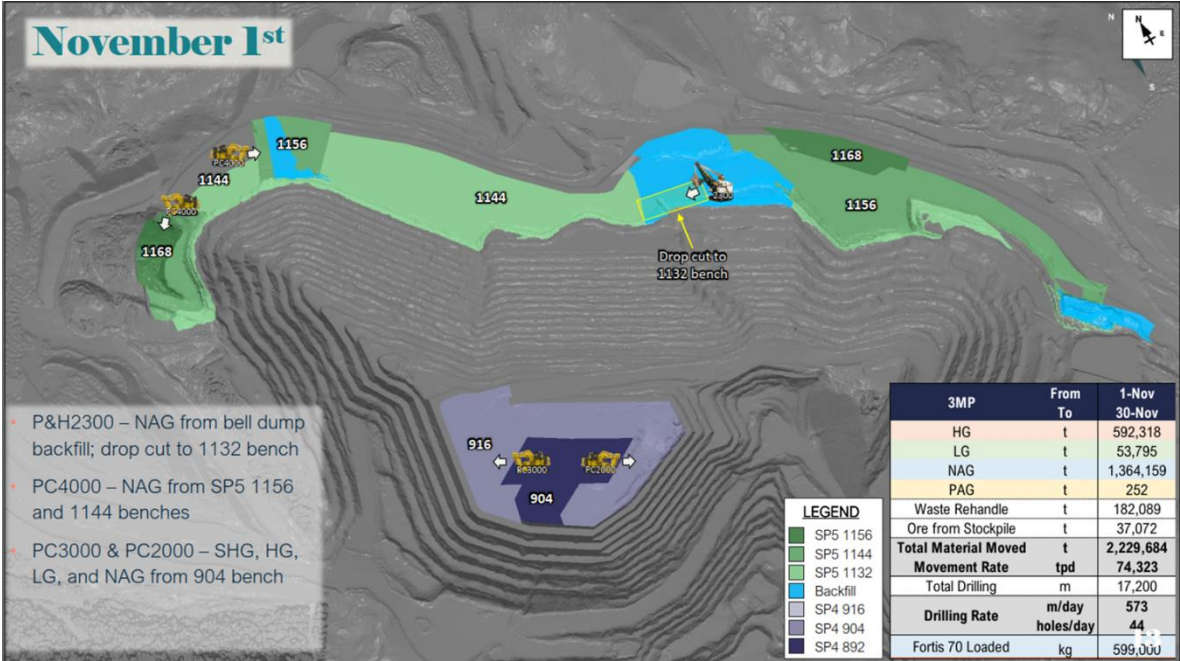
Comments

- WTP has been off since July 4, 2024.
- Active tailings deposition at SP1, SP2, SP4, SP5, SP6, SP7, SP8, SP13 and SP14
- Active tailings deposition at PC2.5, PC3, PC4
- 21 01 was raised 1.5 meters

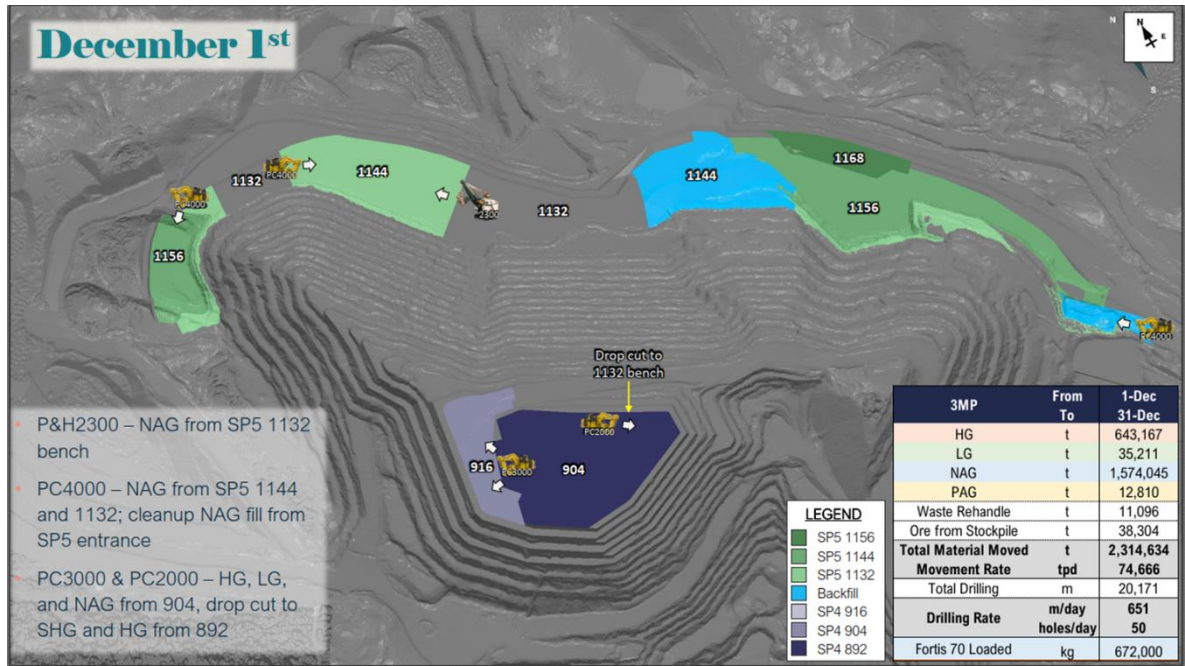
Mining Update – Gabriel Holmes



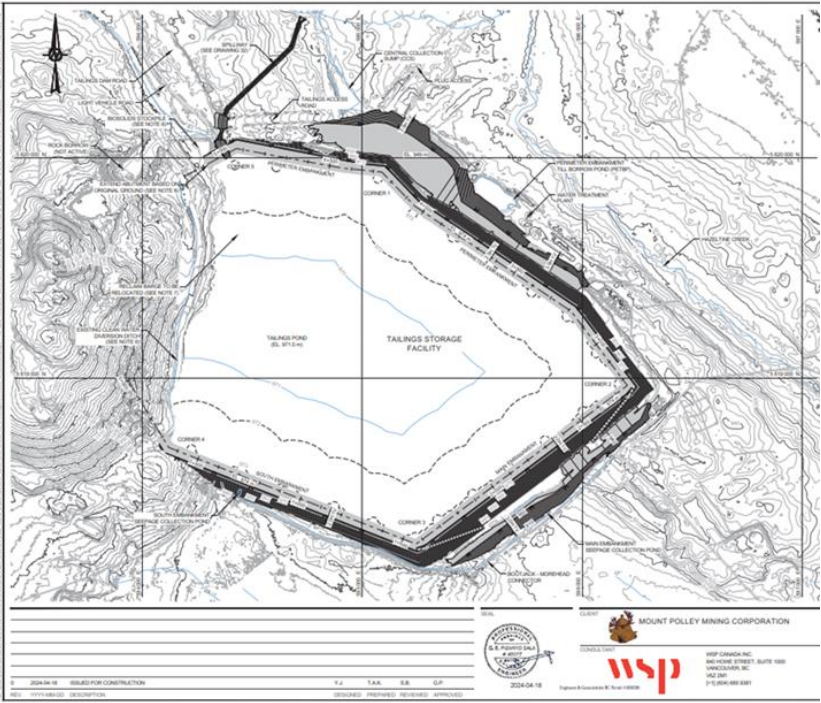
- This looks at the Springer Pit and the development that we are expecting to occur from October to November. You can see most of the work is on the north wall and then some down at the very bottom.



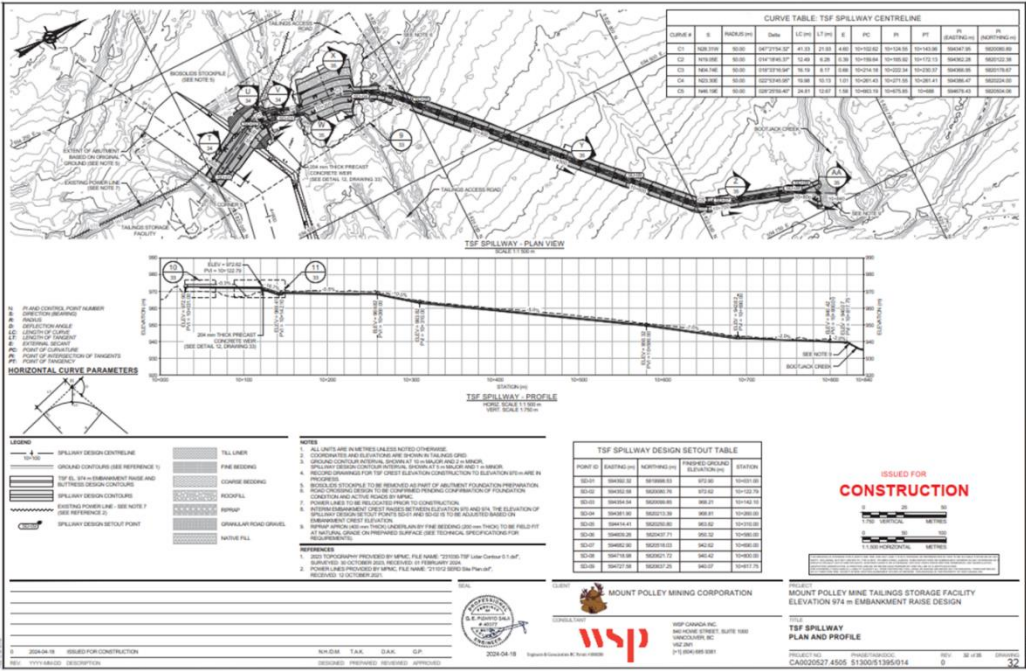
- November 1st this is similar. We are mining down in the same areas.



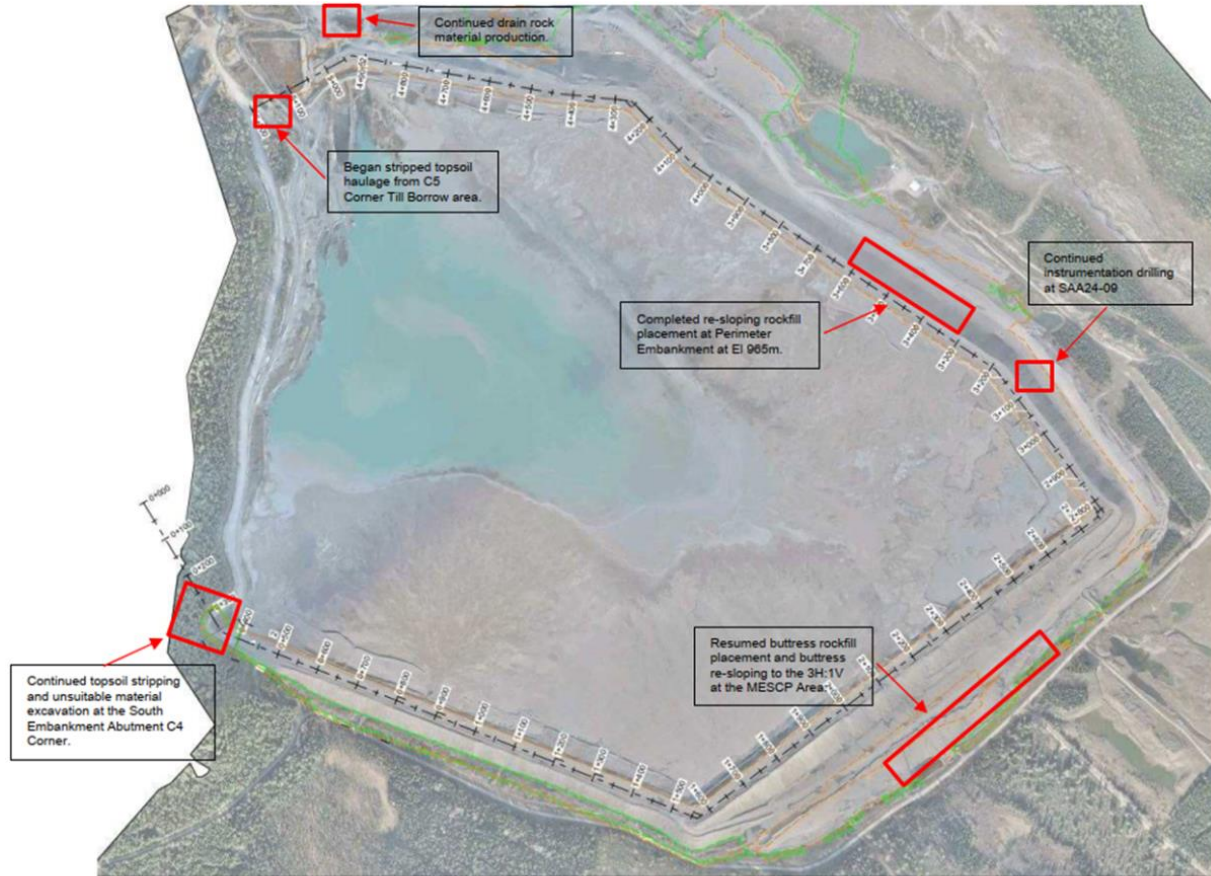
- December 1st- this is where we are targeting. We are planning on moving a fair amount of waste. Any NAG waste suitable for construction will go down to the dam. PAG waste will go to the Potentially Acid Generating stockpile. Any NAG waste that is not suitable for construction, if it is too fine for example, we have some areas where the faults cross through the pit where the material becomes too fine for construction, is sent out to the South East Rock Disposal Site.
- TSF Construction Update
 - This is the largest construction update in the last decade, we are currently building the buttress and resloping to 2:1 below the 970m elevation and that improves our factor of safety and is in line with the dam guidance.
 - +9 million tonnes of rock will be used for construction by the end of 2024.
 - Ongoing construction is required yearly for +6 million tonnes for several years to complete TSF raise to 987m elevation with the application to be submitted in Q4 2024.



- We are building out all of the areas in dark grey: the buttressing and the 2:1 slope as well as all of the embankments. We did increase the footprint slightly though we did not increase the disturbance area. We removed all of the soil stockpiles that were stockpiled along the Gavin Lake Road and moved them into our South Till Borrow and we dug out any incompetent soil and replaced it with rock. Same along the perimeter embankment, we subbed out any unsuitable materials for rock. All of that soil has been stockpiled and we are going to have to reconcile it before the snow comes. After we are done shipping soil, we are going to do an intensive soil reconciliation survey in light of the fact that we require some soil for our RCP obligations. There are a number of older stockpiles that we are not confident that the numbers are correct.

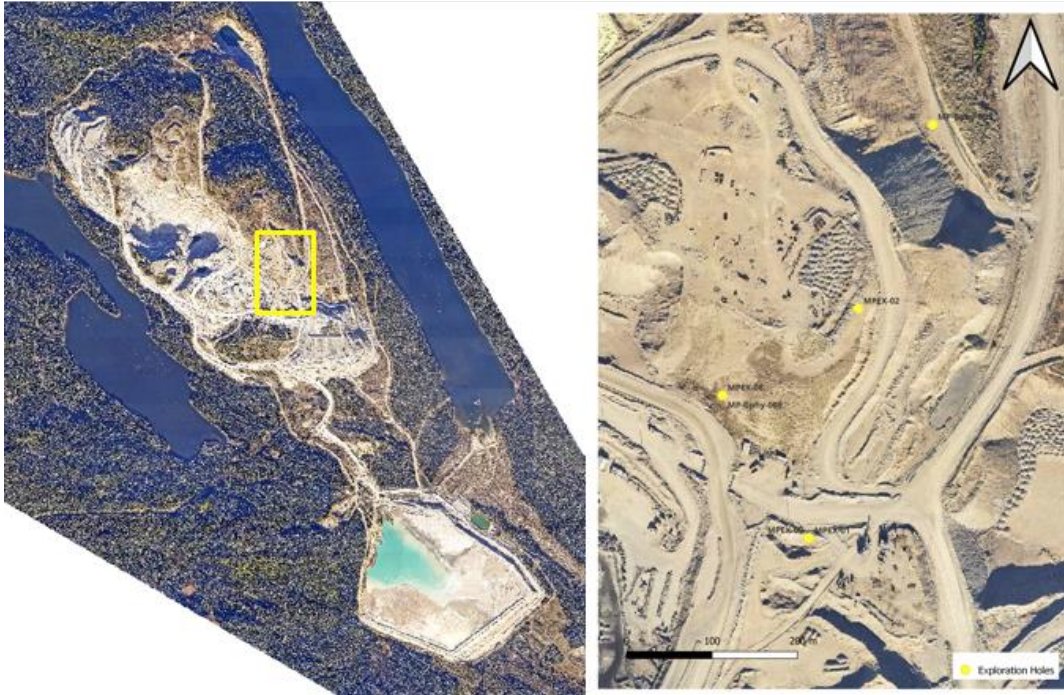


- This is an emergency spillway that has not been installed on the dam yet but it goes from the 970m elevation out toward Bootjack Creek. In the event that there is an emergency overtopping (potential rapid water elevation increase) of the dam it will exit the facility in a controlled fashion down through an existing channel, minimizing the risk of the facility significantly.



Sketch Plan View of the Daily Construction Operation

- This is a snapshot view of the sketch plan view of daily construction operations. This shows all of the areas that they are targeting for construction and the specific tasks that they are undertaking.
- Exploration Update
 - We are currently undertaking exploratory drilling within the permitted mine area. Infill drilling occurred in the Springer Pit area throughout the summer.



- Human Resources
 - We are hiring. Operations are in full swing and we are looking for new members to join our team.
 - Total employees as of September 2024, 389 total, 235 hourly, 119 salary, 35 temp contract and part time
 - Inactive- 16
 - Resignations- as of Sept 2024- 4
 - New hires- as of Sept 2024- 5
 - Seeking tradespeople, mechanics, welders, millwrights, pipefitters, electricians and carpenters
 - Nearing full staffed in some departments
 - Seeking to fill technical positions, engineers and planners
- Remediation/Reclamation Update – Gabriel Holmes
 - East Rock Disposal Site- Extruded surface used to survey the crest and toe
 - CAT D9T used for earthworks to reslope to 2:1 slope
 - We are conducting remedial planning to remove a couple of roads. We have some earthworks down in (Hazeltine Creek) Reach 3 where we need to do some recontouring. We have mostly been doing monitoring of the area affected by the dam failure in 2014.
- “Quantification of Successful Remediation of the Environmental Consequences Resulting from a Major Mine Tailings Storage Facility Breach “ - Lee Nikl et al.
 - Remedial prescription- The remediation program was done as a field engineered initiative with the consent of Fisheries and Oceans Canada as well as FLNRO, now WLRS. It was developed collaboratively with the Habitat Remediation Working Group (HRWG), that group was the mining company and their consultants, WSP, the two local First Nations and government (federal and

provincial). We brought our initial designs to the table and people offered their inputs. It included not only what they wanted to see, what type of fish they wanted the habitat to be maximized for, but also some of the ideas as to how to achieve that. We modified the designs based on feedback and did another round. The designs that came out of the process at the end were better than if we hadn't listened to others.

- Habitat construction- Post breach the materials that were being eroded were the native materials underneath Hazeltine Creek. The geomorphology of Hazeltine Creek was entirely altered and there was a sidewall and headwall cutting. There was an order from ENV to take measures to stop erosion and stop the (Total Suspended Solids) TSS release into Quesnel Lake, and the sequence of events were planned with compliance with that order in mind as well as the future habitat features in mind. We started off by removing the tailings underneath the channel where the channel was going to be built. There were two reasons why we did that. One of those reasons was because they were geotechnically speaking spongy and not suitable for putting a creek on top of. The second reason was because there was still work underway to do an ecological risk assessment and if that ecological risk assessment said we couldn't leave them there and we had just built a creek on top of them that would have been quite a problem so the decision was for those two reasons to remove the tailings in the area that the creek was going to be built. The shaping of the channel was done in the field and the way that was done involved an engineer in the field shooting the elevations which were put into an equation to tell us the number of stream meanders we needed to ramp the creek down at the desired flow velocity. Rock armoring then happened. There were about 20,000 truckloads of 40 tonne trucks that brought rock in. The day after the last rock was placed the turbidity went from in the hundreds, at times 1,000 or more, down to 5 turbidity units. We started building this foundational channel and then we put the habitat features on top of that. The habitat features installed included large woody debris, rock boulders and ripples and pools. There was a harvest of local plant seeds taken to a local nursery which were then planted.
- One of the arrangements we had made with Fisheries and Oceans Canada was to quantify the outcome of remediation. By "outcome" we meant the quantity, quality and productivity of constructed habitat. The quantity and quality were calculated with the habitat suitability index and from that the weighed usable area was calculated. This approach was done for trout in Upper Hazeltine and for trout and salmon in Lower Hazeltine and Edney Creeks. Productivity was evaluated using population viability analysis modelling.
- Results (Habitat Quantity and Quality)- This is for the (Habitat Suitability Index) HSI score. Upper Hazeltine Creek for trout before the breach was 0.576 and post remediation was 0.746. A factor of difference of 1.3-fold improvement in habitat quantity and quality. It was the same for Lower Hazeltine trout and salmon. Lower Hazeltine salmon it was quite a major difference and the reason for that was in the prebreach scenario beaver dams were present. There is not a lot of beaver habitat for them now.
- Results show that food organisms have recovered to prebreach levels.
- Results (Productivity)- Post breach levels surpass prebreach levels as time goes on. We are about at where we were prebreach now with the expectation that that continues to grow.
- Summary- The damage done by tailings dam failures can be fixed. Habitat losses at Mount Polley have been turned into gains. Fish productivity is increased. As streamside vegetation grows, the habitat capacity and productivity gains will increase.

- Public Meeting
 - Under our communications plan we are required to host one public meeting per year
 - To be hosted the week of October 21st
 - Meeting with general mine site information provided followed by general mine tour

Meeting End 12:30 pm

Resources

PLC SharePoint Site:

<https://imperialmetals.sharepoint.com/sites/MountPolleyPLC>

BC Ministry of Environment Natural Resource and Enforcement Database:

<https://a100.gov.bc.ca/pub/ocers/searchApproved.do?submitType=menu>

BC Mine Information page:

<https://mines.nrs.gov.bc.ca/>

mountpolley.com

[Mount Polley - Site Journal](#)

imperialmetals.com

[Home | Imperial Metals](#)

[Facebook.com/mountpolley](https://www.facebook.com/mountpolley)

Sentinel Hub Playground

[Explore \(sentinel-hub.com\)](#)

[Snow Survey Stations Interactive Map \(arcgis.com\)](#)