



Mount Polley Mining Corporation

an Imperial Metals company
Box 12 • Likely, BC V0L 1N0 • T 250.790.2215

MOUNT POLLEY MINING CORPORATION (MPMC) PUBLIC LIAISON COMMITTEE (PLC) MEETING SUMMARY

Meeting Details

In person Meeting and Conference Call
General Meeting – Q4 2023

November 1, 2023

9:00 am to 1:00 pm

Meeting held at the Xatśūll First Nation Band Office Gymnasium, located at 3405 Mountain House Rd, Williams Lake

Meeting Called by: MPMC Designated Representation

Meeting Chaired by: Gabriel Holmes

Minutes by: Alicia Lalonde

Member	Present	Call-in	Organization
Aaron Higginbottom			T'exelc - Williams Lake First Nation
Abhirosh Chandran		x	Ministry of Environment and Climate Change Strategy
Alicia Lalonde	x		DWB Consulting (MPMC)
Alex Gresl			Williams Lake Chamber of Commerce
Ann Godon		x	Ministry of Environment and Climate Change Strategy
Bee Hooker			Big Lake Community
Bill Carruthers			Williams Lake Community
Christine McLean			Mitchell Bay Community
Claudine Kadonaga			Likely Business
Darren Sargeant			Xat'sull - Soda Creek First Nation
Don Parsons		x	Imperial Metals (MPMC)
Doug Watt		x	Likely Resident
Emily Sonneg	x		Xat'sull - Soda Creek First Nation
Gabe Holmes	x		Mount Polley Mining Corporation (MPMC)
Jackie Sarginson			MLA Cariboo North Coralee Oaks Office
Jason Raine			University of Northern BC and Quesnel River Research Centre
Jason Ryll			Williams Lake Chamber of Commerce
Johanna Godt		x	Sedgewick Strategies (MPMC)
Kala Ivens	x		T'exelc - Williams Lake First Nation
Kelly Parker			MPMC
Ksenia Kolodka	x		Xat'sull - Soda Creek First Nation
Linda Bartsch			Horsefly Business
Lisa Kraus			Likely and District Chamber of Commerce
Lyn Anglin			Consultant to Imperial Metals (MPMC)
Luc Lachance		x	Ministry of Environment and Climate Change Strategy
Mathieu O'Leary	x		Mount Polley Mining Corporation
Maureen LeBourdais	x		Cariboo Regional District
Melanie St Arnault		x	Ministry of Energy, Mines, and Low Carbon Innovation
Micky McIntosh			Likely Resident
Nishitha Singi			T'exelc - Williams Lake First Nation
Richard Holmes			Little Lake Community
Spencer Neufeld			T'exelc - Williams Lake First Nation
Steve Hocquard			Horsefly Community
Surinderpal Rathor			Williams Lake Government
Victoria Stevens		x	Ministry of Energy, Mines, and Low Carbon Innovation
Walt Cobb			Williams Lake Resident
Guests			

Meeting Start: 9:05 am

Roll Call – Introductions and acknowledgements – Gabriel Holmes

- Thank you for the hospitality Xatśūll.
- I'd like to acknowledge that we operate on unceded traditional territories and work in partnership with the Williams Lake and Xatśūll First Nations.

Additions to Agenda, and Approval of Agenda – Gabriel Holmes

- As I have indicated in the agenda, we are going to go over the following:
 - PLC Membership and Terms of Reference Review
 - ENV/EMLI Discussion/Compliance Review
 - Permitting/Amendment Applications
 - Environmental Monitoring Update
 - Coolant Spill Sept 5, 2023
 - Discharge/WTP Update
 - NPM
 - Water Management Update
 - Remediation/Reclamation Update
 - Mining Update
 - Roundtable Discussion
 - PLC Questions/Comments
 - Next Meeting- Jan 17, 2024?
- Does anyone have additions to the agenda, or have objections to it? If not, we are going to move on through what we have planned.
- Agenda approved.

PLC Membership and Terms of Reference (ToR) Review – Gabriel Holmes

- Each of us as members can identify people and reach out to people that may be interested in joining the committee. If anyone has someone in mind, an individual or organization, please forward that to me.
- There are still numerous vacancies on the committee. I would like to hear from the group about what they think about these vacancies. We should endeavor to fill them.
- Please review the ToR periodically and know your responsibilities.
- Action Item from Q3 meeting- Mount Polley Employee representative should be changed to United Steel Workers Union representative. I have requested a representative, but have not heard back. I've also emailed Kiera Dolighan at Cwelcwélt Health Station to represent the First Nation Health Authority as Spencer suggested, and we have not received a response.
- Minor updates still need to be made to references in the table of the ToR eg: FTP site should be Sharepoint site, GoTo Meeting is referenced. We are functioning well as a committee but I will make the necessary changes and circulate the amended ToR with the changes tracked.

Communications

- We are always asking ourselves if we are good communicators and if we are providing the information that everybody wants. There is always room for improvement.
- It is important that we communicate to the regulators and stakeholders regularly, our doors are always open.
- We are committed to our communications plan.
- We have the PLC, Sharepoint and other websites, meetings, calls and presentations, tours and reporting to convey information.
- Safety
 - We are going to start including some safety statistics in these meetings now that we are in operations. MPMC is committed to providing a safe and inclusive work environment to all of its workers, staff, contractors and guests.
 - Safety Share- It is cold and flu season, and COVID is on the rise in the province. Please practice good hygiene, and try and stay healthy.
 - Initiatives- Quarterly site wide communication meetings, regularly scheduled departmental safety meetings (monthly) and Shift Cycle Audits (each department does a weekly audit of their work area and passes on the results to the rest of the department), Joint Occupational Health and Safety and Environmental Committee (meet monthly), Mine Rescue training weekly.
 - Safety statistics are included in the tables below. In 2022 we had a bit of a rocky year commissioning the mine but it merits discussion. We do investigate all of these incidents. In 2023, the statistics have turned around. We have a safer workplace and workforce, and there is more awareness out there. The reportable incidents YTD number is incorrect, it should be 6, not 68. Reportable incidents include spills, fires, dangerous occurrences, etc.
 - Matt O'Leary (MO): Reportable incidents in the 2023 table is incorrect and should read 8 not 68.

	2022
LOST TIME ACCIDENT	8
MEDICAL AID	15
FIRST AID	98
REPORTABLE INCIDENTS	3
DANGEROUS OCCURENCE	8

Reportable Injuries/ Incidents		
	Sept MTD	YTD
Lost Time Accident	0	0
Medical Aid	2	59
First Aid	4	49
Reportable Incident	0	68

- A Community Initiatives Committee has been formed and has committed support for various community events such as the WL Indoor Rodeo, Heavy Metals Rocks- Highschool student integration into the work force, Mining for Miracles Charity BBQ and Thrill of the Grill contest benefitting BC Children's Hospital, MPMC Fishing Derby, Big Lake Fishing Derby, BC Mine Rescue/First Aid Competition, National Indigenous Peoples Day, Williams Lake Stampede, Performances in the Park, company golf tournaments and company Christmas parties. We have received a lot of positive feedback and we are happy to be a part of these events. Please let us know if there are any initiatives that we could donate to.

- Supply Chain
 - We are committed to supporting local economies and rely heavily on local businesses to satisfy our needs. We see significant monthly expenditures in local communities and are committed to our local suppliers and communities.

Supply Network 2022(excluding payroll)	Supply Network 2023 YTD(excluding payroll)
Quesnel – 1.1 Million	\$ 890,262.38
Williams Lake 15 Million	\$ 12,775,906.71
100 Mile 14.5 Million	\$ 5,587,491.13

ENV/EMLI Discussion/ Compliance Review

- Let's open up the floor to ENV and EMLI. Luc, Abhirosh and Melanie, do you have anything to bring to the committee's attention regarding compliance from a regulatory perspective?
- Luc Lachance (LL): I wanted to follow up about someone from the compliance division attending these meetings which was brought up in a previous meeting. The team has undergone a number of changes and a number of vacancies have been filled over the summer/fall. They are rebuilding their capacity to conduct inspections. The last inspection that was conducted at the mine by the compliance team was in 2020. They are planning an inspection for this coming spring. The compliance team will hopefully be able to attend these meetings following another inspection when they have something to share. With the permit amendment coming up we will be reviewing all of the reports and information.
- Melania St Arnault (MSA): No comments on my side.
- GH: This is a standing agenda item so there will be the opportunity to present information at each of these meetings. Note that you can find documentation regarding the mine's compliance and enforcement online at: <https://mines.nrs.gov.bc.ca/> (link provided to the group by LL). We have semi-regular desktop (report and document review) and in person inspections from the regulatory bodies, like EMLI (electrical, mechanical, geosciences, ergonomics, health and safety inspections) and we can provide information regarding those inspections as they are public information.

Permitting/Amendment Applications – Don Parsons

Permit			Projects	Pre-Application	Application Submission	Approval
Joint Application						
Springer Expansion	M-200	Springer Pit Expansion		December 2022	Oct 31, 2023	June 2024
	Permit	Southeast Rock Disposal Site				
	11678	Northwest PAG Stockpile Disposal				
	Date	Quesnel Lake Discharge [Operation]				
		NAG/PAG Ratio Modernization				
Individual Applications						
TSF 970m to 974m	M-200	TSF to 974m [Interim design]		Submitted	Feb 2024	July 2024
TSF 974m to 987m	M-200	TSF to 987m [LoM design]		Submitted	May 2024	Q3 2024
Notice of Departures						
TSF Foundation Preparation	M-200	Strip Unsuitables, replace with NAG		N/A	Aug 22 2023	Nov 8, 2023
NAG Borrow	M-200	2023/24; NAG Mining Ph5 in Material for NAG Construction Projects		N/A	Nov 2, 2023	Nov 16, 2023
TSF Reslope < 970m	M-200	NAG Reslope & Extend Buttress		N/A	Nov 10, 2023	Dec 6, 2023

- **Joint Application:**
 - Springer Expansion: To extend mine life into early 2030's, it involves Springer Pit expansion, the Southeast Rock Disposal Site, Northwest PAG Stockpile Disposal, Quesnel Lake Discharge [Operation], NAG/PAG Ratio Modernization (how we define material that is PAG and how we make the split between NAG and PAG material), the preapplication submitted in December 2022 and the application is being compiled with submission any day now, which will kick off the consultation period, with approval estimated in June 2024.
- **Individual Applications:**
 - TSF to 974m: The preapplication has been submitted and the application is expected to be submitted in February 2024.
 - TSF to 987m: This height gets us through the life of the mine. The preapplication has been submitted and the application is expected to be submitted in May 2024. This requires a very detailed site investigation and design report that is expected sometime in May which will be used to inform our lift that we are looking to do in the summer of 2024.
- **Notice of Departure (These are items that the Ministry can approve without going through a detailed permit review):**
 - TSF Foundation Preparation: This involves stripping organics and unsuitable material from around outside of dam and replacing it with NAG. The preapplication and application have been submitted. All Ministry comments have been addressed. An amendment to the M-200 permit has been initiated and is under review currently. We will be responding to that today. No comments from us are anticipated. We will accept the amended permit as written. Then we can start stripping soils around the dam and replacing it with NAG in preparation to build the dam.
 - NAG Borrow: This involves sourcing more NAG material on Springer Phase 4 for the SERDS Co-Disposal Facility and other projects like the re-sloping of the backside of the dam that needs work. We have to source NAG material from the high side of Springer Phase 4. This application will be submitted this week.
 - TSF Re-slope < 970m: Some portions of the TSF are 1.3:1 and we want to bring that up to spec of 2:1. That'll be material that will have to be placed within the next 8-12 months which will be hauled down from the NAG Borrow. The application submission is expected to be November 10, 2023.

- This is the permitting path into the spring of 2024. We are working with our counterparts at WSP and Minnow to compile all of the information required for these applications.
- Archaeological field reconnaissance was completed in October with the assistance of the XFN and WLFN to support the upcoming permit amendment application. They targeted areas including the expanded TSF footprint and areas north of the Springer Pit.
 - Don Parsons (DP): This work was part of a preliminary field reconnaissance for the Notice of Departures. According to the senior archaeologist, there were no archaeological concerns identified in the expansion areas including the NAG borrow and TSF footprint.

Environmental Monitoring Update – Gabriel Holmes

- Waste Management
 - We generate a lot of waste at a facility such as this and it is important that it be disposed of in a responsible fashion.
 - We have a permitted landfill (under the *Environmental Management Act [EMA]*) on site and have many recycling initiatives underway.
 - We are all responsible for our own waste.
 - Clean up and proper disposal of waste is part of our job.
 - Applicable regulations: *EMA*, Hazardous Waste Regulation, Ministry of Environment Permit PR 14590
 - We have independent management waste streams for: food waste, drink containers, paper, cardboard, 5-gallon pails, etc.
 - GFL Environmental is the service provider for hazardous and non-hazardous waste, they take our waste oil, rags, etc.
- In addition to our weekly waste inspections, GFL provides a waste management technician monthly who gives a third-party assessment in certain areas of the mine site.
- Throughout the quarter we completed water sampling, including surface water, groundwater, contact water and seepage; flow monitoring; wildlife monitoring; spawning surveys; fish tissue surveys; fish population surveys; weather monitoring; waste management; inspections; reporting; planning; 2023 CEMP Review.
- We have a comprehensive environmental monitoring program: we spend a lot of time monitoring and sampling water to inform water management decisions.
 - Our groundwater monitoring program looks at all groundwater on site. We have around 36-38 wells on site, some are deep and some are shallow, most sites are nested with a deep and a shallow well. We monitor certain wells monthly, quarterly, biannually and annually, as per the CEMP.
 - Surface water sampling: streams, ephemeral streams, ditches, Polley Lake, pit lakes, Wight Pit, Hazeltine Creek, Edney Creek, mine site seepage, groundwater and the Water Treatment Plant are all sampled regularly.
 - The fall seepage program is wrapping up today. Twice a year we look at all of the seepage on the site around all of the toes and dumps where there are deposits of mine rock. There are five sites that are monitored on a quarterly basis for typical water chemistry which is used to inform water management decisions.
 - Contact water: sumps, ditches, pipelines, TSF Supernatant

- This image is from the sentinel hub playground website. We observed turbid water in Quesnel Lake at the surface during our September sampling event. You can clearly see the effect of the Niagara River in the East arm of Quesnel Lake. There was mention in the news about froth observed on beaches of junction of Quesnel Lake. These are similar observations to those that we made in September and we were out on the lake again yesterday and we could still see it. Observe the color of Quesnel Lake in relation to Spanish Lake and also Wasko Lakes. I would expect Quesnel Lake to be dark in color like these lakes but what we are seeing in these sat images is discoloration. I have a meeting scheduled with the QRRRC to discuss this toward the end of the month. I'm going to talk to Ellen Pettigrew and Phil Owens about their research. I haven't seen anything jump out at me in terms of water chemistry except for the slightly turbid layer at the surface that extends for tens of kilometers up the lake. Doug, you live on the lake is this something that you've been observing?

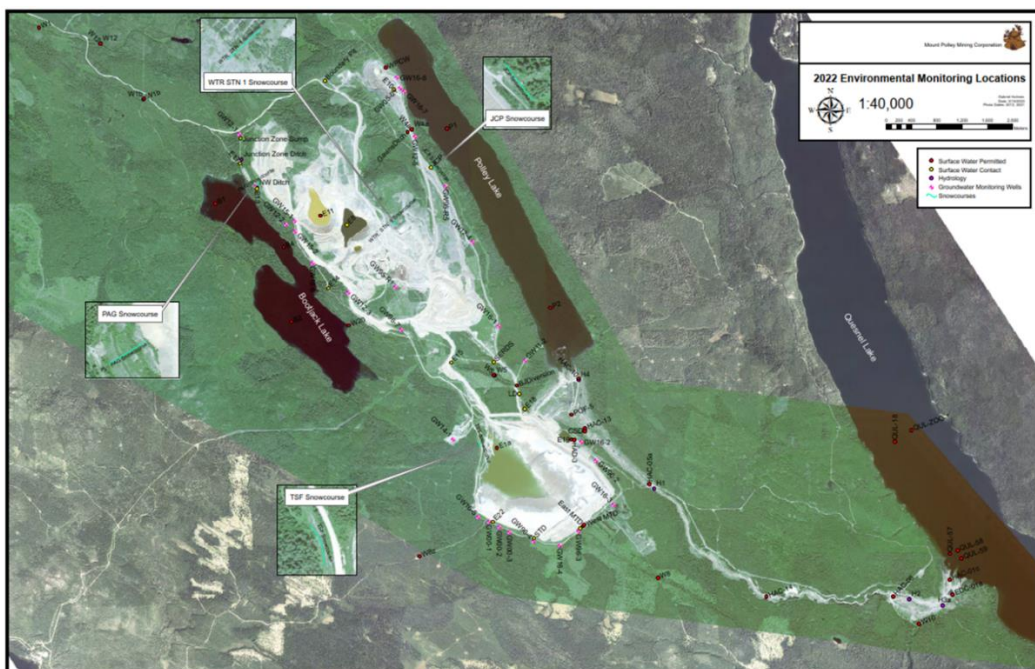


DW: For sure, I am quite concerned. I've never seen the water so cloudy and I've been here over 25 years. I've talked to people who have been here for over 50 years and they've never seen the lake like this before. We have a lot of slime on the rocks as well, a green color. I don't know if you had anyone at the QRRRC public meeting here at the end of September but they discussed their research, so I am interested in hearing what they have to say. They are indicating possibilities of increased phosphate levels in the biota.

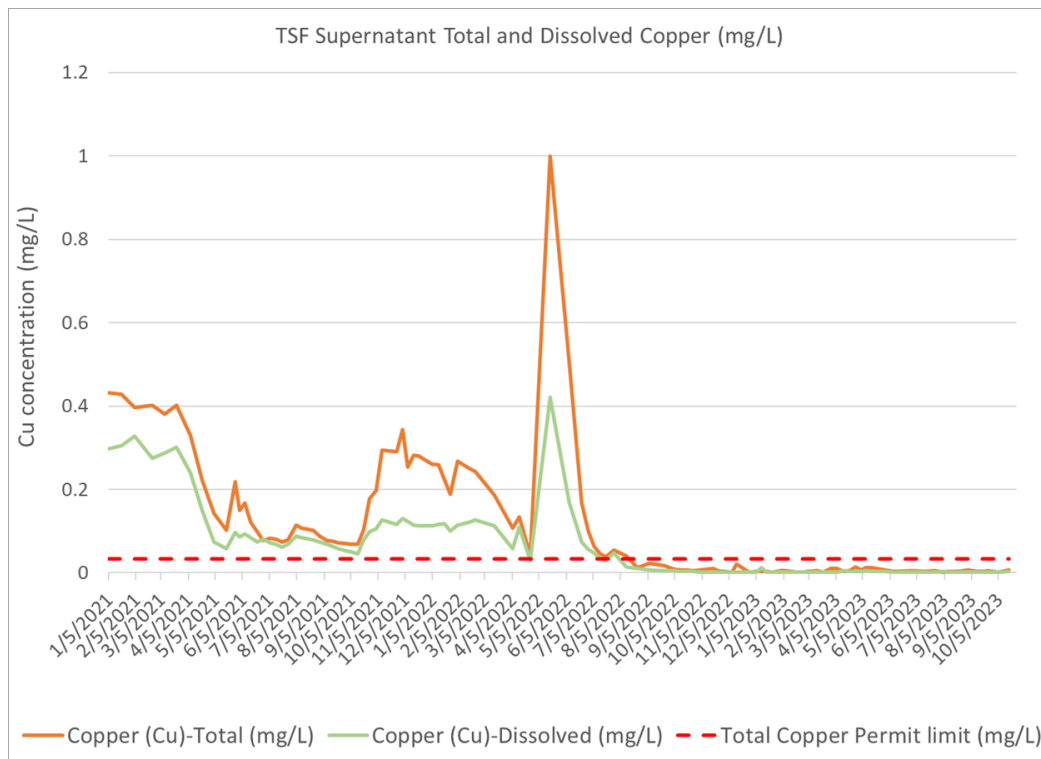
- GH: Now that we've completed our final sampling event, we will look at all the data and compare it to our historic data at least dating back to 2014. I am particularly interested in what we are seeing at the end of East arm and whether it is affecting the whole lake. It seems like a lot of area to cover but also, maybe it is driven from climatic conditions that we are observing. Niagara River is a glacial fed river with a large icefield that feeds in. I think these are cyclical types of events. Most photos that were taken show a very small amount of turbid water in the East arm of the lake at the outlet of the Niagara River but nothing like we are seeing now.
- ML: When was this picture from?
- GH: Sept 22.
- ML: When were the fires? It was on fire for months.
- GH: I spoke to Jason Raine about this and he mentioned the same thing. There were numerous fires up there and there was a fire up in Shoals Bay. It is something we are going to look at. It is some cause for concern. For Q1, we will evaluate our Quesnel Lake water chemistry and I will meet with QRRRC and see

if we can get some answers. I encourage you to go to this website and look at a number of the photos. I am fairly confident that I could see kilometers long ribbons of froth in those images.

- Flow monitoring: Monitoring at our established stations as well as some of the tributaries in the area. We will be removing flow monitoring equipment for the season when we see freezing conditions and monitoring will resume in the spring.
- Ongoing wildlife monitoring programs: small (we are in year 2) and large mammal (we are in year 3) programs were ongoing. We captured some really great photos again this year of large mammals, which we are still going through.
- Spawning surveys are being conducted every 2 weeks until December to see if we can see any interior Fraser River Coho.
- Fish tissue sampling in Quesnel Lake and fish population monitoring in Polley Lake was completed.
- Weather monitoring:
 - We have 2 stations on site that monitor parameters every 5 minutes (rain, temperature, wind direction, wind speed, gust speed, solar radiation, relative humidity, dew point, battery).
 - We may be getting an automated snowpack measuring system, I have to speak to some experts about the system that is right for us but it would give us more precision with the measurements and allow melting events to be captured more accurately.
- Inspections:
 - We do twice annually as per Permit 11678 visually inspect all critical mine water management infrastructure including sumps, ditches, pipelines and pumping infrastructure. We conduct these inspections during freshet and in the fall. We have almost wrapped up our fall inspections for the year.
- Reporting and planning: We spend a lot of time planning and reporting our activities. Both of these activities are ongoing.
- 2023 CEMP Review
 - Responses to the first round of comments have been submitted.



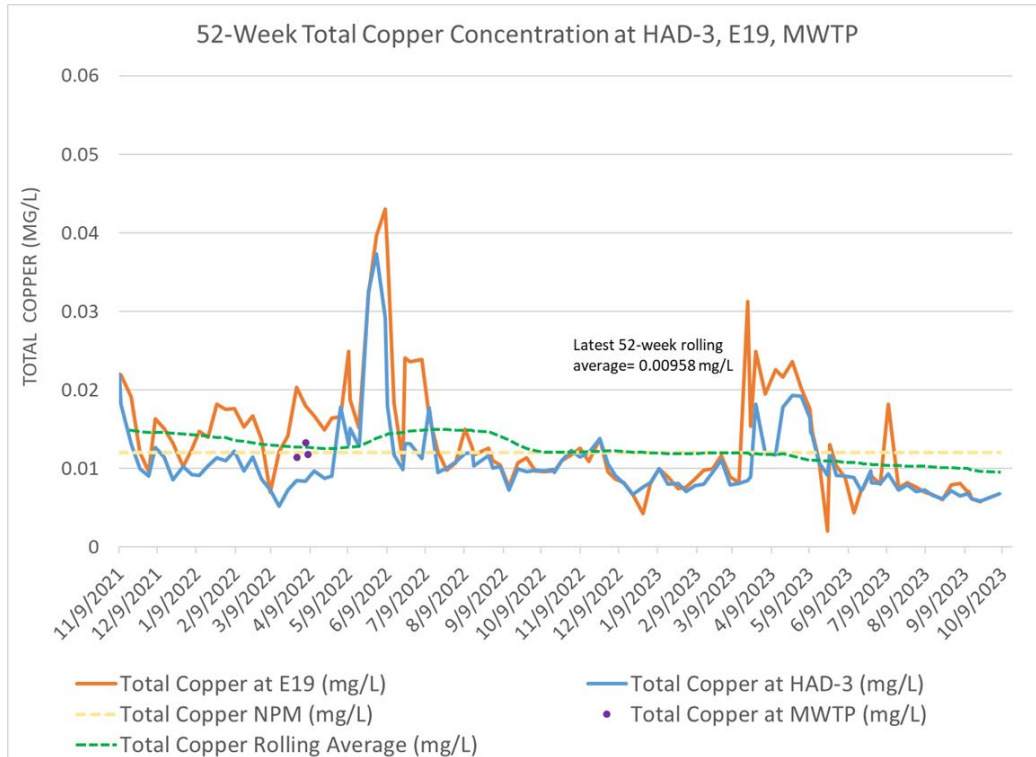
- Coolant Spill
 - On September 5, 2023, ~40-60 L of coolant was spilled from a CAT 785c Haul Truck when a coolant hose failed while conducting regular haulage activities. The operator observed an alarm while in operation and shut the machine down to conduct an inspection. The operator observed the failed hose and immediately reported the incident to their supervisor. The spilled material reported to the compact haul road. Response actions were implemented immediately, and buckets and pads were used to effectively clean up the material for offsite disposal. The spilled material did not affect and flora, fauna or waterways.
- TSF Supernatant total and dissolved copper concentrations from 2021-present
 - An action item from our last meeting was to look at TSF Supernatant copper concentrations. This graph shows that when we started operations, we saw an improvement in water quality in the TSF as water was used for processing in the mill. We did have challenges during our Care and Maintenance period with copper in our TSF Supernatant.



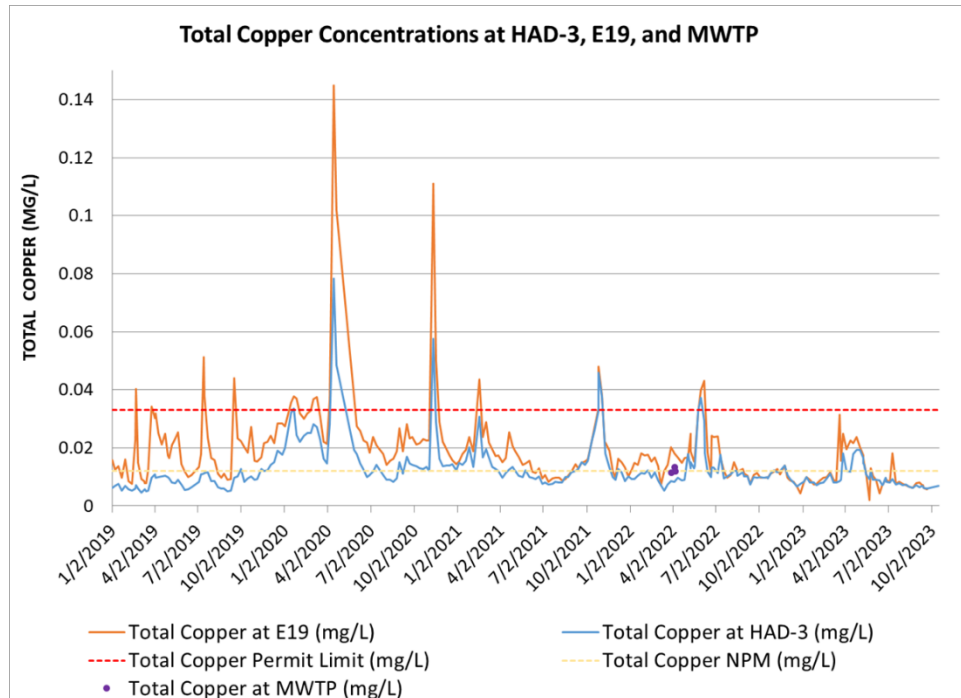
Water Management Update – Gabriel Holmes/Mathieu O’Leary

- Discharge/WTP Update
 - Discharge was nearly continuous throughout Q3, there were some down days due to influent supply.
 - A total of ~719,423 m³ were discharged in Q3 with an average discharge rate of 0.093 m³/sec, average of ~7,820 m³/day.
 - The authorized annual average rate of discharge is 29,000 m³/day.
 - The maximum authorized rate of discharge is 52,000 m³/day.

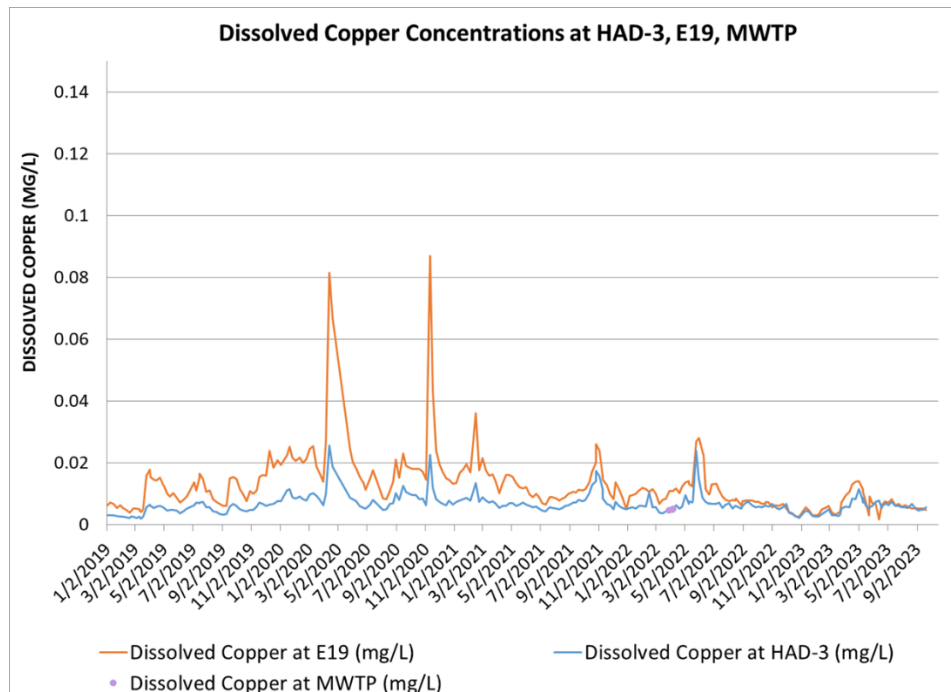
- Plant shutdowns due to lack of immediately available water and the need to pump more water into the TSF.
- NPM (Numeric Performance Metric): We are endeavoring to meet the NPM. Copper concentrations have been declining. We are currently at 0.00958 mg/L (see graph below).



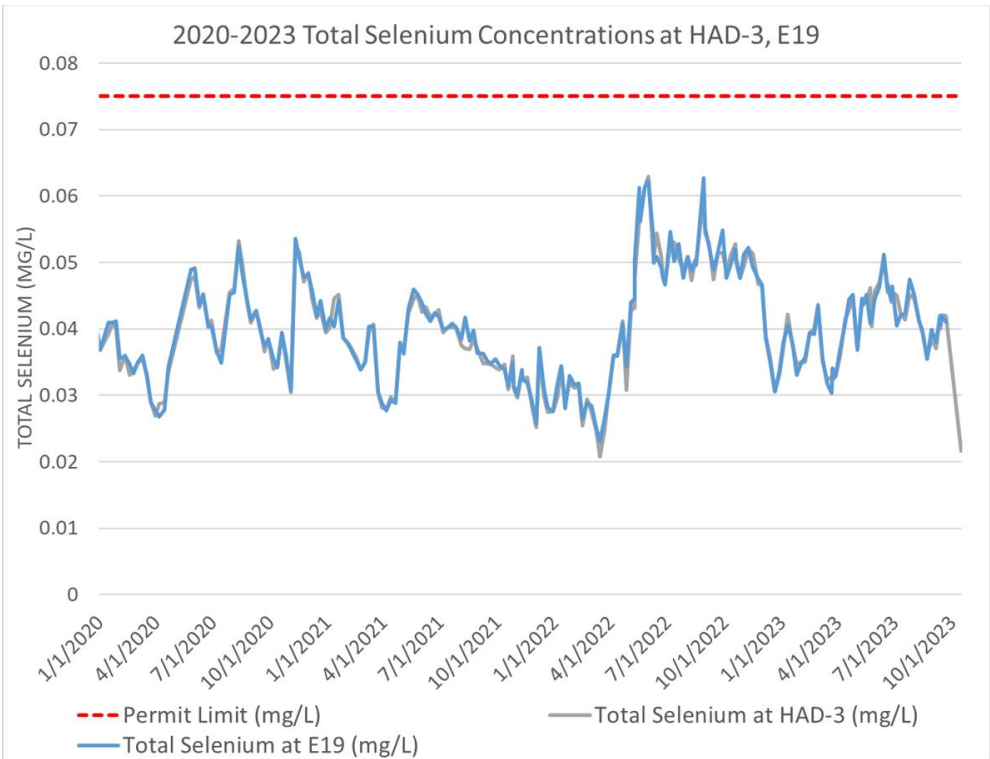
- WTP Influent vs Effluent Total Copper
 - Copper concentrations have been relatively low over the last couple of years, below the permit limit prior to discharge. We have favorable chemistry coming out of that pipe.
 - An underwater diffuser inspection is being conducted by Fraser Burrard Diving today. We are required to do this inspection under our permit every 5 years.



- WTP Influent vs Effluent Dissolved Copper
 - Very low concentrations, similar trends to total copper.

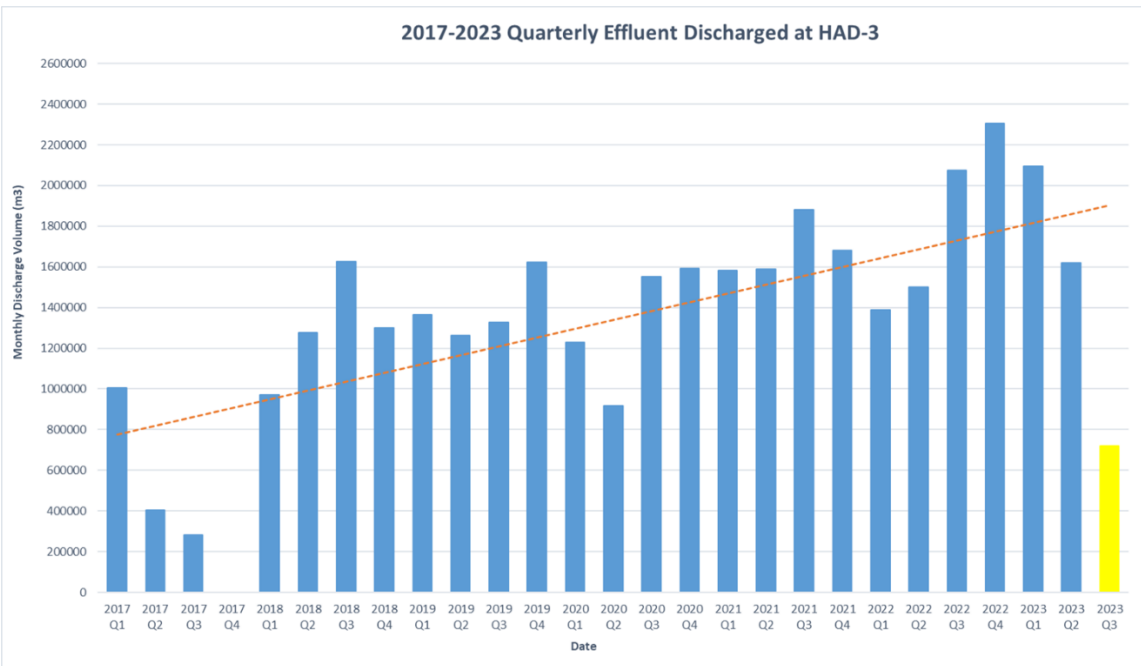


○ WTP Effluent Selenium

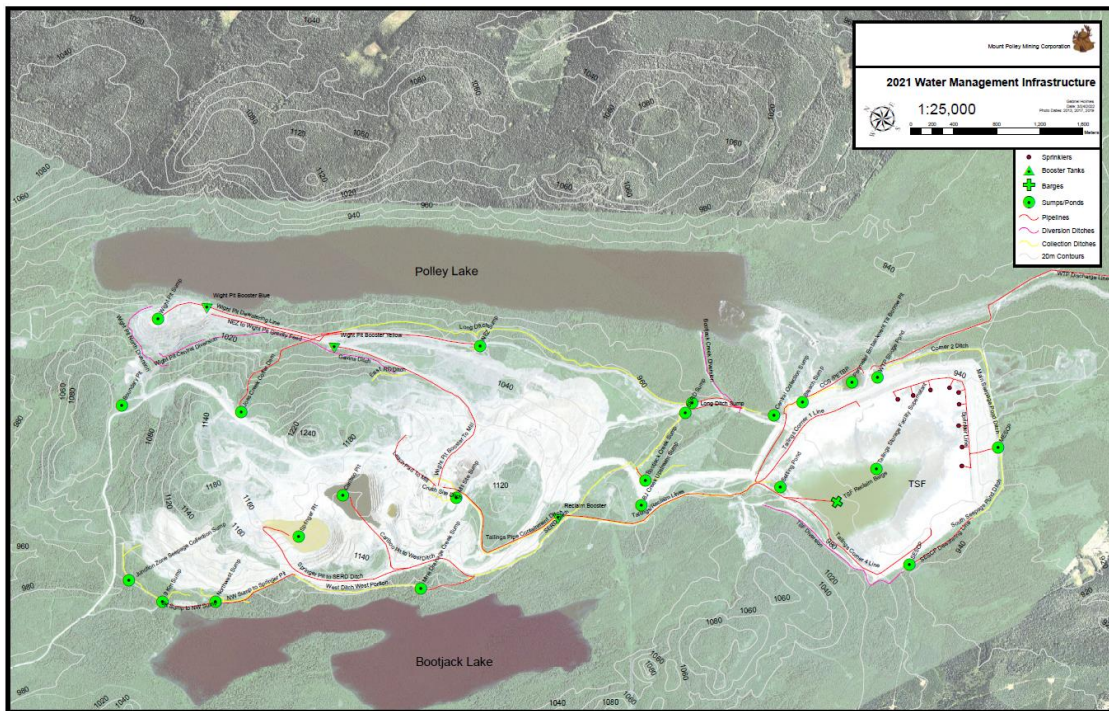


- WTP efficacy in treating selenium is virtually zero. There have been pretty stable selenium concentrations all below the permit limit but we cannot treat selenium effectively with the WTP.

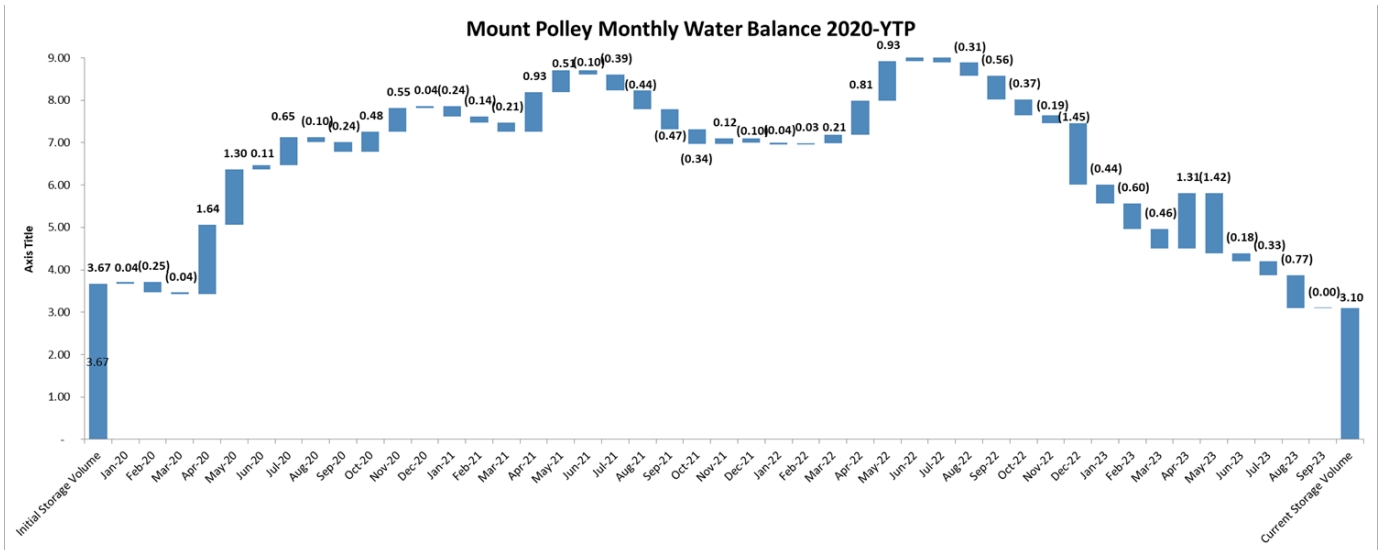
○ 2017-2023 Quarterly Effluent Discharged



- The trendline is still trending upward but we have had the plant off and plan to keep the plant off for another couple of months depending on what we see at the mine site for rainfall. A lot of this is weather driven.
- Water Management Infrastructure
 - This map shows our diversion ditches, collection ditches, pipelines, sumps and ponds. These are all locations that we monitor through our contact water sampling.



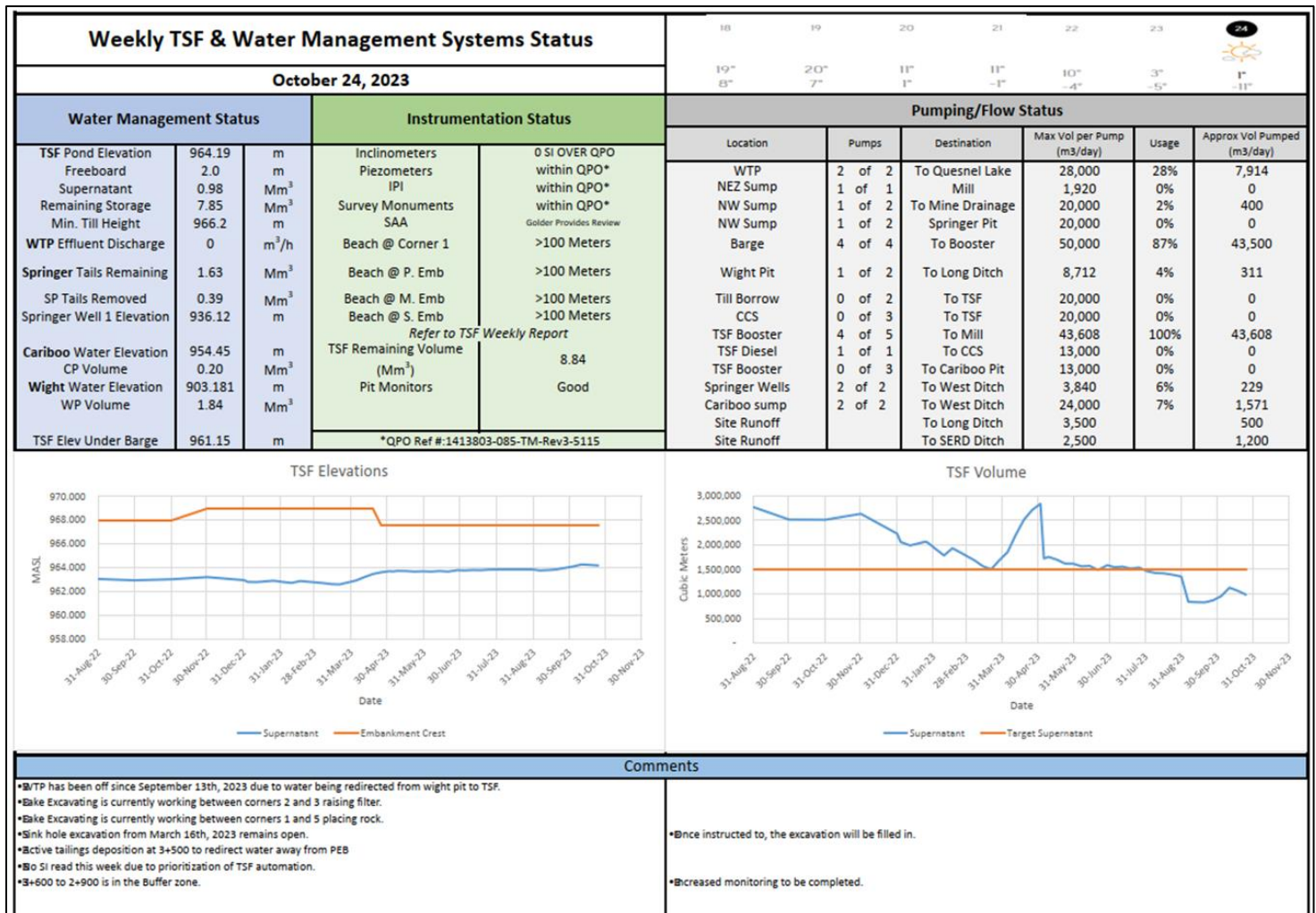
- Year over year water balance comparisons
 - This is a water balance waterfall which shows total site water balance beginning in January 2020 (3.67 Mm³) until last month. In 2020 we had very high snowpack and we accumulated a lot of water in 2020 and 2021. In 2021 we start to see some decreases month by month. In 2022, we were operating an additional WTP and you can see the last couple columns drop because we had the two plants operating simultaneously. Currently, we are sitting at just about 3 Mm³ of water on site. The majority of that water is in the Wight Pit.



	Volume - This week (Mm3)	Volume - Last Week (Mm3)	Total Change (Mm3)
TSF	0.98	1.06	(0.08)
Cariboo Pit	0.20	0.20	0.00
Wight Pit	1.84	1.84	0.00
Total	3.03	3.11	(0.08)
Volumes As of	24-Oct-23	17-Oct-23	
	Elevation - This week (m)	Elevation - Last week (m)	Total Change (m)
Springer Well 1 Elevation (m)	N/A	933.57	#VALUE!
Elevations As of	October 24, 2023	October 17, 2023	

- The TSF has 0.98 Mm³ of water which is operating in the normal range. We will keep the TSF at this level throughout the winter. The Cariboo Pit has very little water which is more or less acting as a sump for mining operations. The Wight Pit is capable of holding 3.5 Mm³ of water, and there is just under 2 Mm³ in there. All of that water is from last year's freshet. The strategy going forward is to maintain that water as surplus water. We are no longer discharging off site. We need to maintain enough water for processing in the mill during the winter months. We are going to pump that water into the TSF as needed and evaluate the snowpack in March. We are in a good position for water balance on the site.
- This is the TSF Dashboard which is updated and sent to the EoR weekly. There is a lot of information on here but essentially, we sum up the instrumentation data, the water management, where everything is being pumped to, water volumes, beach width. Beach width is a major Quantitative Performance Objective (QPO) that we need to maintain. We need 100 m beaches and we are currently sitting at 500 m. The dam is being operated within normal operating parameters.
- Over the summer, we are going to an automated data collection system on all of the piezometers; there are 158 on the dam. There are 30-40 slope inclination monitors. As of now 80% of the piezometers are on the automated data collected system. There are two points collected every day and data is sent to a network server where we and the EoR have access to it immediately. We are going to keep on adding to

it every year until the whole thing is automated. It provides consistent data collection, and we can set triggers to be sent out via email.



- Tailings Storage Facility
 - Pumped down to meet QPO, now filling up to facilitate mill operations
 - Working to meet EoR QPOs at all times
 - 2023 construction season successful- built 2 m this year so we are at the permitted elevation
- Springer Pit
 - Dewatering wells and removing tailings is ongoing. As we mine down through the tailings, the well heads stick up. The crew is going to reinstall and redevelop that well to get ahead of dewatering the tailings. The tailings removal from the pit onto the SERDS dump is going better than expected. We are working on the second lift; we have to traffic heavy duty equipment onto the first layer of tailings which may pose some challenges. There is ongoing monitoring associated with that facility as well.
- Cariboo Pit
 - Maintaining water elevation to permit mining
 - Providing water to the concentrator for processing
 - Partially backfilled to facilitate mining
 - Ongoing monitoring at the end of pipe

- Wight Pit
 - Currently partially flooded, able to reduce water elevation significantly throughout the year
 - Surplus water storage
 - Ongoing monitoring at the end of pipe, limnological monitoring in the pit lake
- Maintenance / Improvements
 - Mine site drainage- Removed a sump and changed some ditching to facilitate construction of an office building, gatehouse, mine rescue training facility, first aid room, ambulance bay and mine rescue bay
 - Mobile WTP operations have ceased
 - The water management system hasn't changed but we are making significant upgrades to it. In areas where the pipelines were just meeting the requirements, we upgraded those and replaced them with thicker pipelines, we removed diesel pumps and replaced them with electric, the power grid system was revamped over the last couple of years so we are upgrading and winterizing.

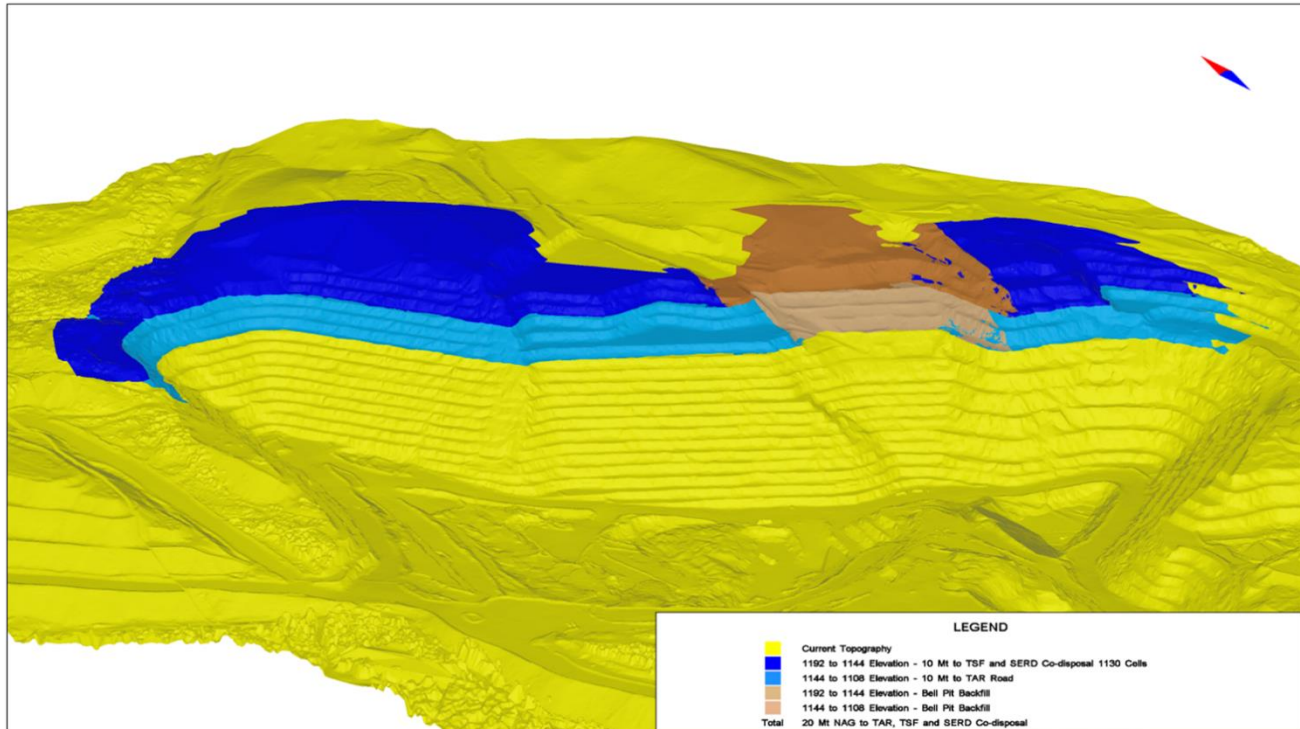
Remediation/Reclamation Update – Gabriel Holmes

- We are pleased to share that on September 20, 2023, Mount Polley Mining Corporation and the Habitat Remediation Working Group (HRWG) proudly accepted the prestigious McDonald Annual Reclamation Award from the BC Technical and Research Committee on Reclamation (BC TRCR) at the 2023 Reclamation Symposium in Prince George.
- No remediation works other than planning for 2024 were completed in Q3.
- Environmental monitoring activities are ongoing in the remediated areas following the TSF dam failure and planning is underway for the completion of the project.
 - Transition to monitoring phase only after 2024.

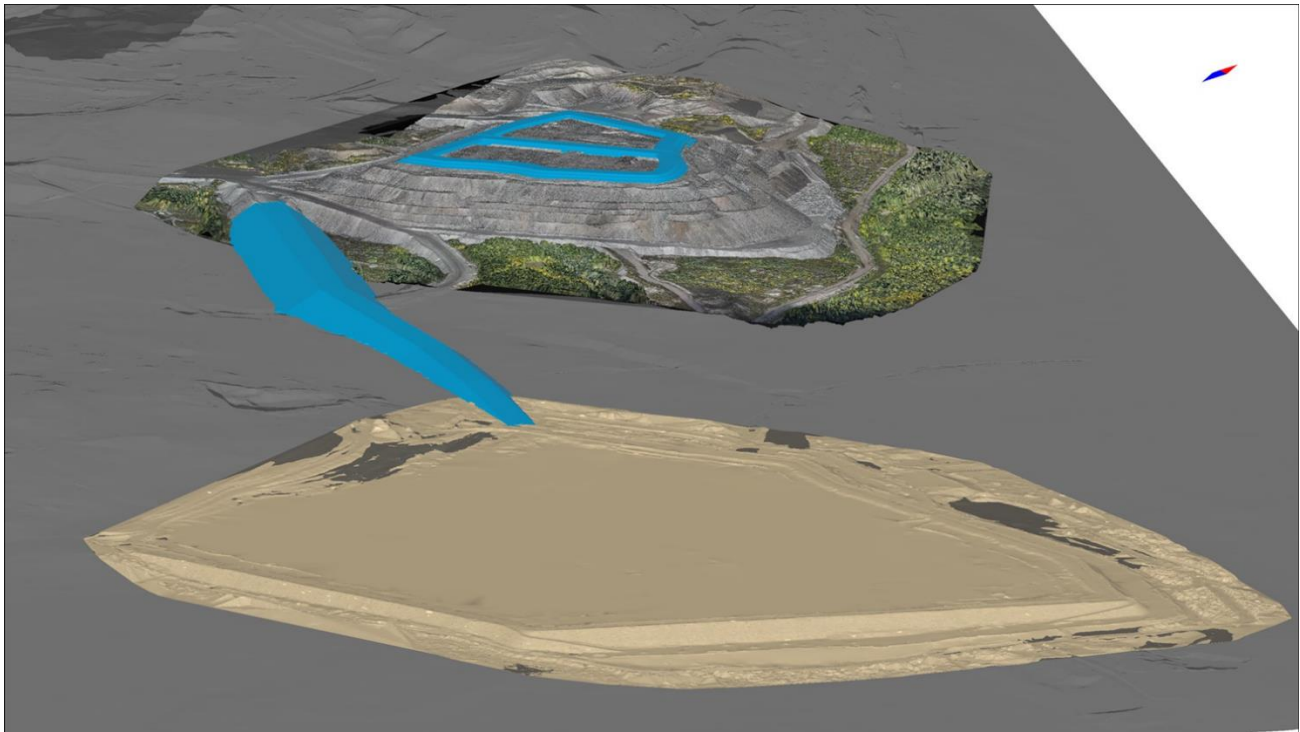
Mining Update – Gabriel Holmes

- Pit Operations- Are ongoing, 24/7 in Cariboo and Springer Pit area, mining ore, NAG/PAG or tailings
- Mill Operations- 24/7 though we do have maintenance days, we are producing concentrate, the recoveries that we are seeing are acceptable for gold and copper
- Mobile Maintenance- Have a fleet of trucks, diggers, excavators, etc. that need to be maintained to keep the mine running
- Mill Maintenance- Required to keep the mine running
- Site Services- Help maintain the roads and pumping infrastructure
- Engineering- Mine engineers are contracted, produce daily, weekly, monthly, semi-annual and annual plans
- Geology and Ore Control- Geologists are on site daily, material segregation within the pit, onsite lab that evaluates gold and copper concentrates, surveys
- All of these aspects need to work together concurrently in order to keep the mine running

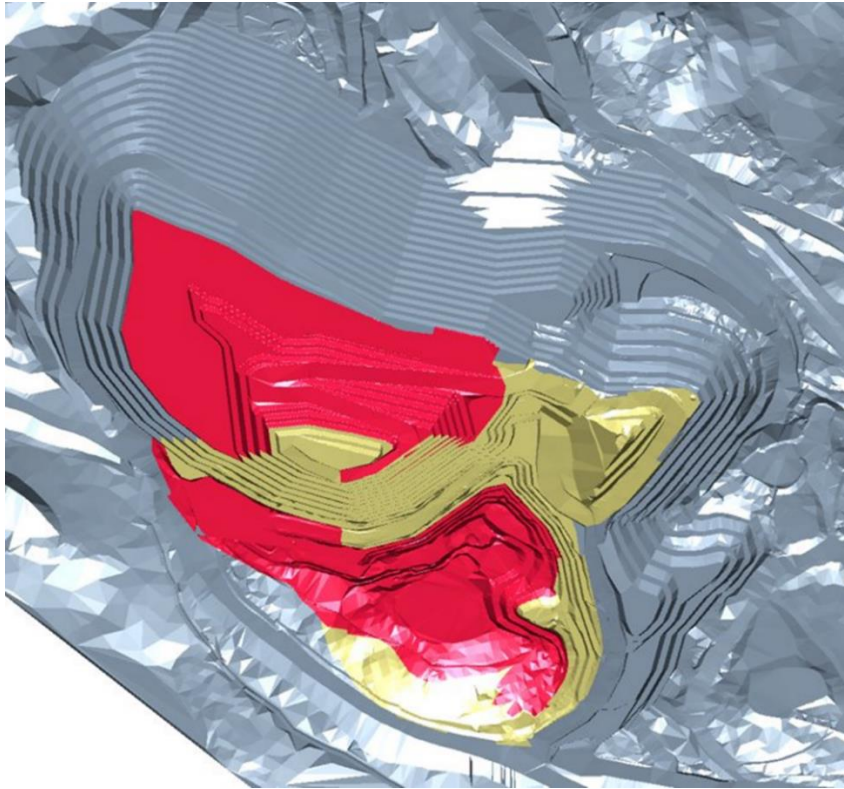
- Life of Mine
 - Proposed Mine Plan 2024
 - Pushback of the high wall of the Springer Pit



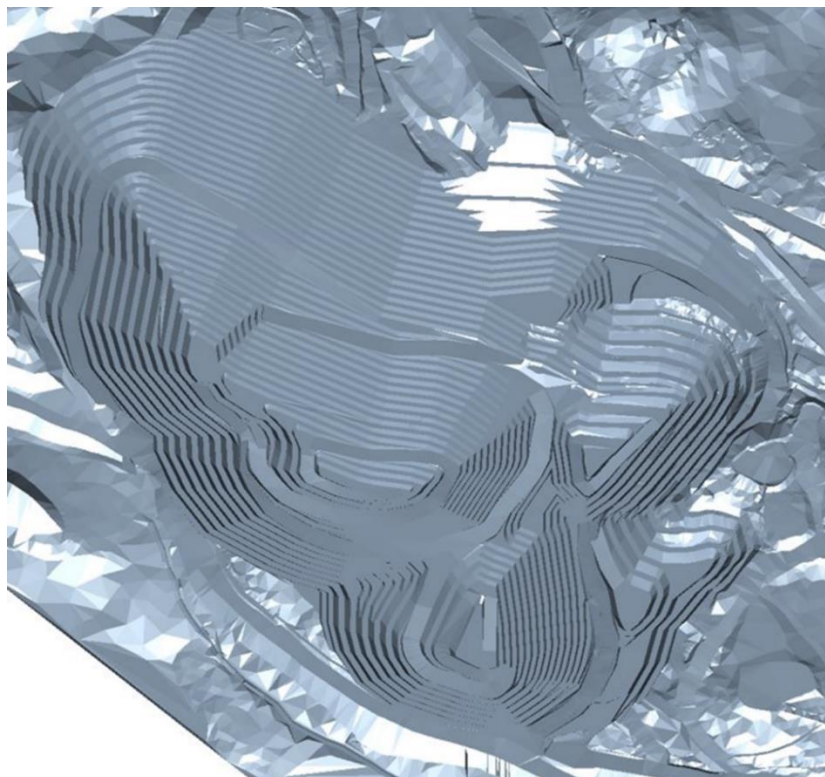
- SERDS Co-Disposal and TSF Haul Road
 - Blue items have already been permitted
 - The blue “B” is the SERDS Co-Disposal facility
 - The other blue polygon is a road from the SERDS Co-Disposal site to the TSF. The Road from SERDS Co-Disposal site to the TSF will be completed in the future which will be beneficial for tailings deposition as well as haulage.
 - DW: On the SERDS containment area, is there any concern for fine materials migrating through the rock dumps out into the environment?
 - GH: Yes, that was a consideration. We have increased our surveillance around the dump in groundwater and seepage monitoring. I believe that is also why there are cells and lifts. Consolidation of material in Springer Pit was greater than expected. We believe these concerns have all been addressed with the design considerations and we will continue our monitoring during construction.



- 2027
 - Mining further down in Springer Pit, and mining the WX Zone



- 2033
 - Near the end of mine life



- Job Opportunities – We are hiring. Operations are in full swing and we are looking for new members to join our team.
 - As of September 29, 2023, 290 full time MPMC employees (targeting 355 employees), 21 new hires in this quarter, 24 employees terminated their positions
 - Seeking tradespeople, mechanics, welders, millwrights, pipefitters, electricians and carpenters
 - Nearing full staffed in the Mine Ops and Mill Ops, however, need to hire winter help employees for the mill soon
 - Seeking to fill technical positions, engineers and planners
 - Challenges in hiring

Round Table Discussion

None.

PLC Questions/Comments

None.

Next Meeting

- January 17, 2024, location TBD

Meeting End 11:50 am

Resources

PLC SharePoint Site:

<https://imperialmetals.sharepoint.com/sites/MountPolleyPLC>

BC Ministry of Environment Natural Resource and Enforcement Database:

<https://a100.gov.bc.ca/pub/ocers/searchApproved.do?submitType=menu>

BC Mine Information page:

<https://mines.nrs.gov.bc.ca/>

mountpolley.com

imperialmetals.com

Facebook.com/mountpolley

Sentinel Hub Playground

[Explore \(sentinel-hub.com\)](https://Explore.sentinel-hub.com)