



Mount Polley Mining Corporation

an Imperial Metals company

Box 12 • Likely, BC V0L 1N0 • T 250.790.2215 • F 250.790.2613

November 7, 2014

Ministry of Environment
 Mining Operations Environmental Protection
 2080 Labieux Rd.
 Nanaimo, BC
 V9T 6J9

WEEKLY POST-TSF BREACH REPORT – WEEK OF OCTOBER 29 – NOVEMBER 4, 2014

Water Management and TSF Works

Polley Lake Dewatering	<p>Polley Lake water elevation = 921.82 m</p> <p>Because the lake water level was within its natural range, pumping from Polley Lake to Hazeltine Creek was stopped on October 20, 2014 at 8:00am. Temporary stoppage of pumping helped to accommodate downstream restoration works. Pumping was temporarily started again on November 3, 2014 at 8:00am to return the lake water elevation to maintenance levels.</p>
Breaches	<p>No breaches of the water management system containing water flow from the Tailings Storage Facility (TSF) occurred this week.</p>
TSF and Water Management Structures	<p>Construction of the following structures is complete:</p> <ul style="list-style-type: none"> • The Polley Lake plug access road • The Breach Pond • Upstream 1 and 2 sumps, including installation of the Slurry 1 pump • The Perimeter Access Road (labelled as “Breach Haul Road” in Figure 1) which will provide access for buttress work along the Perimeter Embankment and allow restoration materials to be hauled to Hazeltine Creek <p>Updates on additional projects are as follows:</p> <ul style="list-style-type: none"> • The ditch from the Breach Pond to the Till Borrow Pit is approximately 90% complete • Work to adjust the overflow culverts and increase the capacity of the Central Collection Sump is scheduled <p>All water from TSF water collection systems is currently transferred to Springer Pit via the Central Collection Sump. Water from the Breach Pump is transferred to the Till Borrow Pit to allow settling of suspended solids prior to being transferred to the Central Collection Sump.</p> <p>All structures referenced are shown in Figure 1. This figure also shows areas of the current buttress lift (50% complete) and foundation preparation for additional buttress (50% complete) along the Perimeter Embankment.</p>

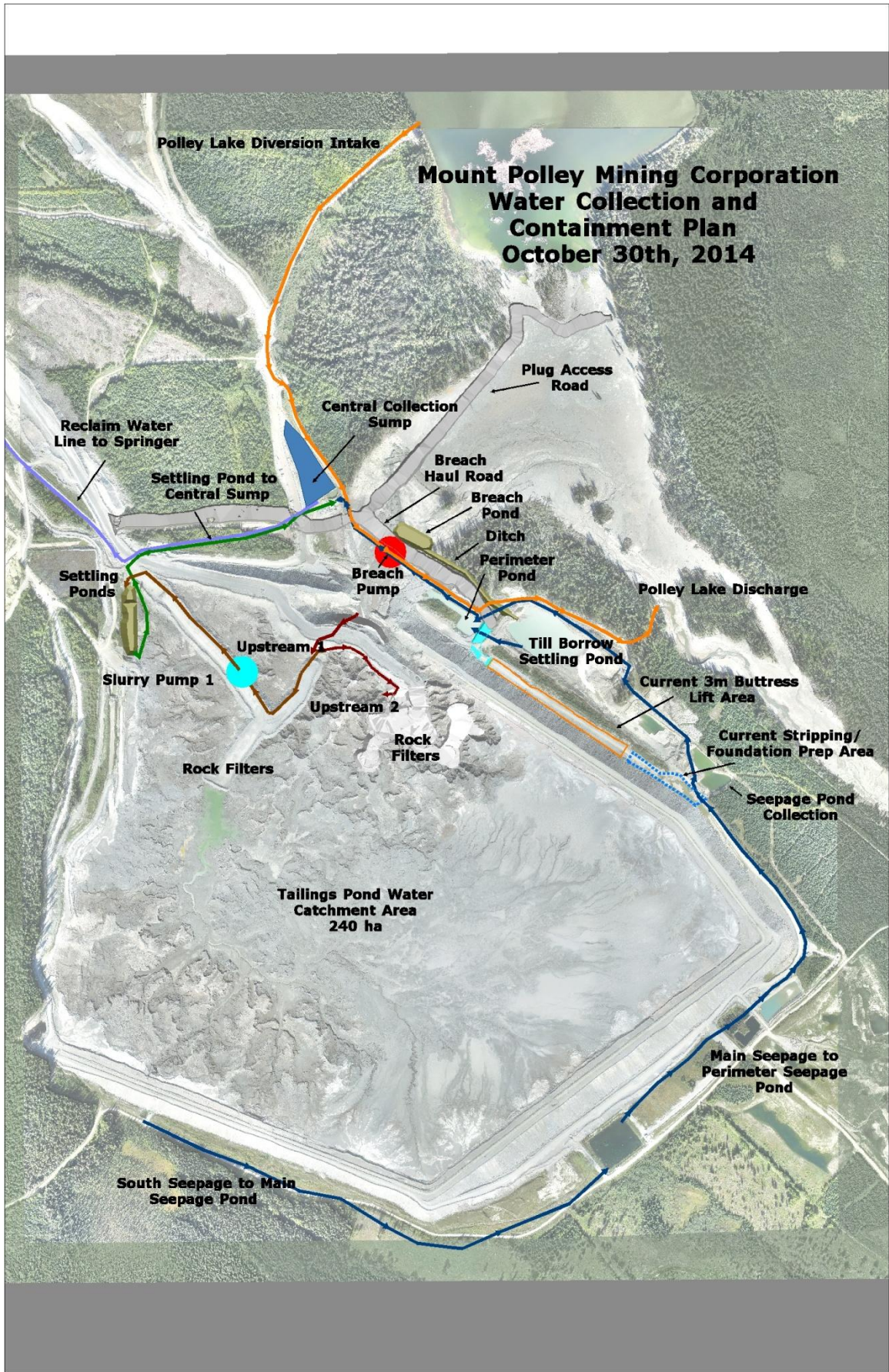


Figure 1. Tailings Storage Facility construction works

Sediment and Erosion Control Measures

Silt Curtain	The silt curtain attached to the log boom at the mouth of Hazeltine Creek continues to remove sediment from the water column. The curtain is in good condition.
Sediment Control Works	<p>Current sediment and erosion control works underway on lower Hazeltine Creek (below the Ditch Road) include:</p> <ul style="list-style-type: none"> • Construction of the Upper and Lower Sedimentation Ponds. • Upgrading of access roads. • Re-grading and landscaping of select areas. • Installation and maintenance of silt control measures including silt fences and straw bales. <p>Environmental construction monitoring is occurring continuously during all activities. No change in turbidity in the water in Hazeltine Creek has been detected as a result of the construction.</p> <p>Design work on the sediment and erosion control plan for upper Hazeltine Creek near completion.</p>

Routine Water Quality Monitoring Program

The maps on pages 1 – 8 of Figure 5 (attached) show locations that have been sampled as part of the water quality monitoring program. The following table is a summary of the current water quality monitoring program. The more exposed easterly locations (QUL-112/QUL-112a, QUL-120/QUL-120a, and QUL-zoo-8/QUL-zoo-8a) were not sampled this week due to unsafe lake conditions caused by wind.

Frequency	Area	Sample Locations
Daily	Quesnel River	QUR-1
	Hazeltine Creek	HAC-01a
Weekly	Quesnel Lake	QUL-2a, QUL-18, QUL-21a, QUL-40a, QUL-66, QUL-66a, QUL-112/QUL-112a, QUL-120/QUL-120a, QUL-zoo-8/QUL-zoo-8a
	Hazeltine Creek	HAD-1 (when pumping), HAC-05
	Polley Lake	P1, P2 Field parameter profiles only: POL-5, POL-6
2x/week	Quesnel Lake	QUL-79
Time/weather permitting	Quesnel Lake	QUL-2, QUL-20, QUL-21, QUL-22, QUL-31a, QUL-87, QUL-119

Note that raw data has not been appended to this report, but Mount Polley will continue to present interpreted sampling results on the [Mount Polley Updates, Water Quality & Sampling](#) page of the Imperial Metals website.

QA/QC

A flow chart has been provided as Appendix A which shows how data is being managed and processed to maintain quality control.

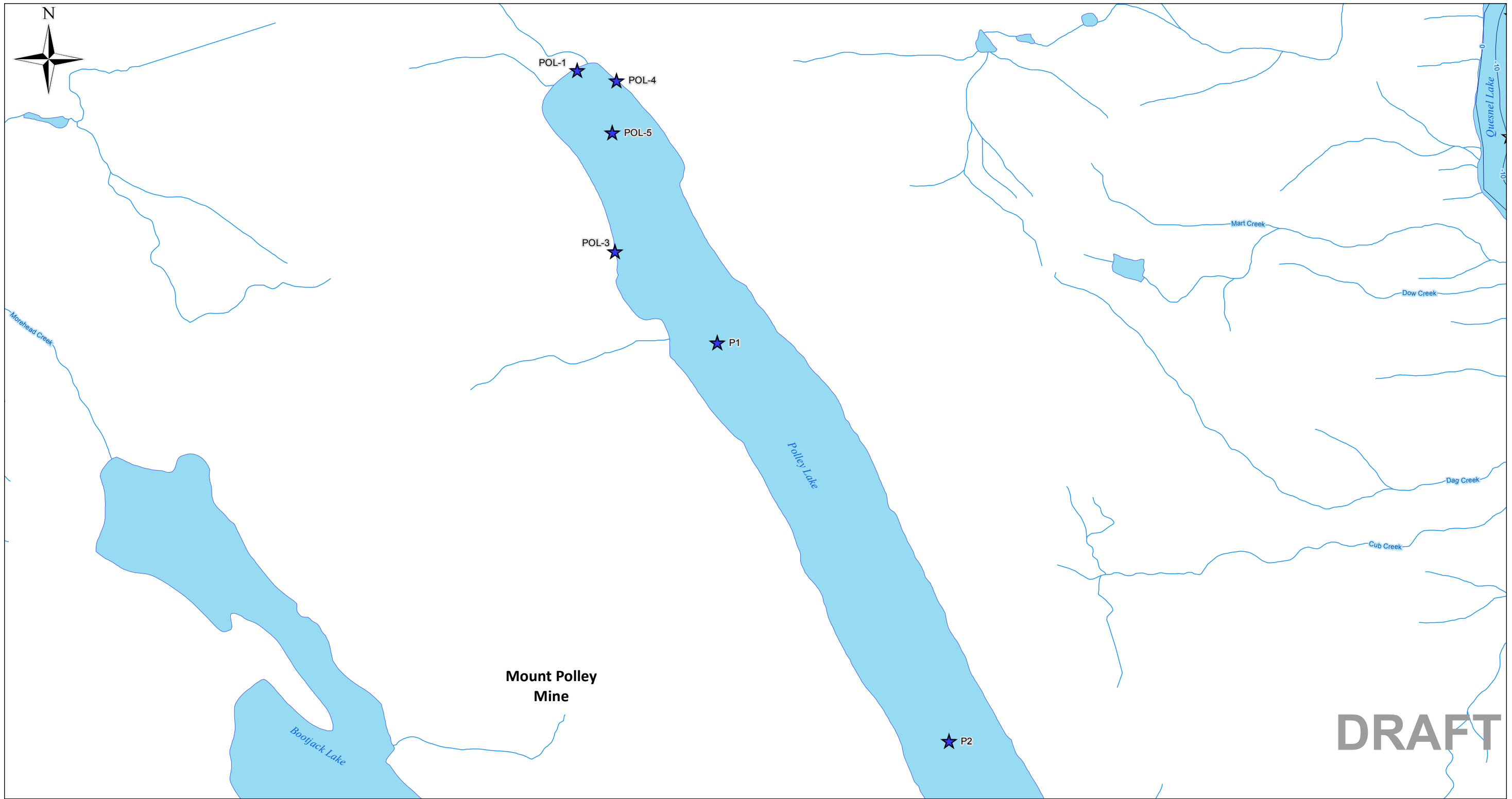
ATTACHMENTS

Drawings:

612717-005-P1 through 612717-005-P8: Current Monitoring Locations (Figure 5)

Appendices:

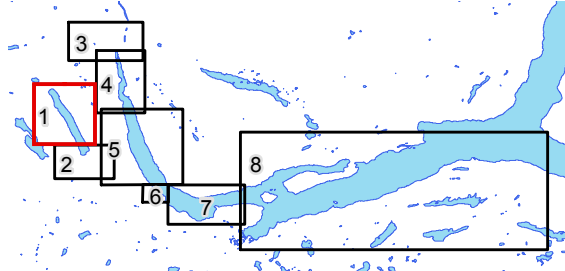
Appendix A: QA/QC Data Management Flow Chart



LEGEND

Surface Water Sampling Locations

- ★ Hazeltine Creek
- ★ Polley Lake
- ★ Quesnel Lake
- ★ Other Areas

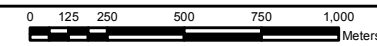


NOTES

1. Original in colour.
 2. Numerical scale reflects full-size print. Print scaling will distort this scale, however scale bar will remain accurate.
 3. Intended for illustration purposes, accuracy has not been verified for construction or navigation purposes.
- * Note: Shoreline has been modified from the Fresh Water Atlas source data in the area of Hazeltine Creek Mouth to reflect post-release conditions.

REFERENCES

1. Data provided by Mount Polley Mining Corporation
2. Data downloaded from Data.Gov.BC.ca Data Distribution Service.
3. Orthophoto collected by McElhanney on August 5th, 2014

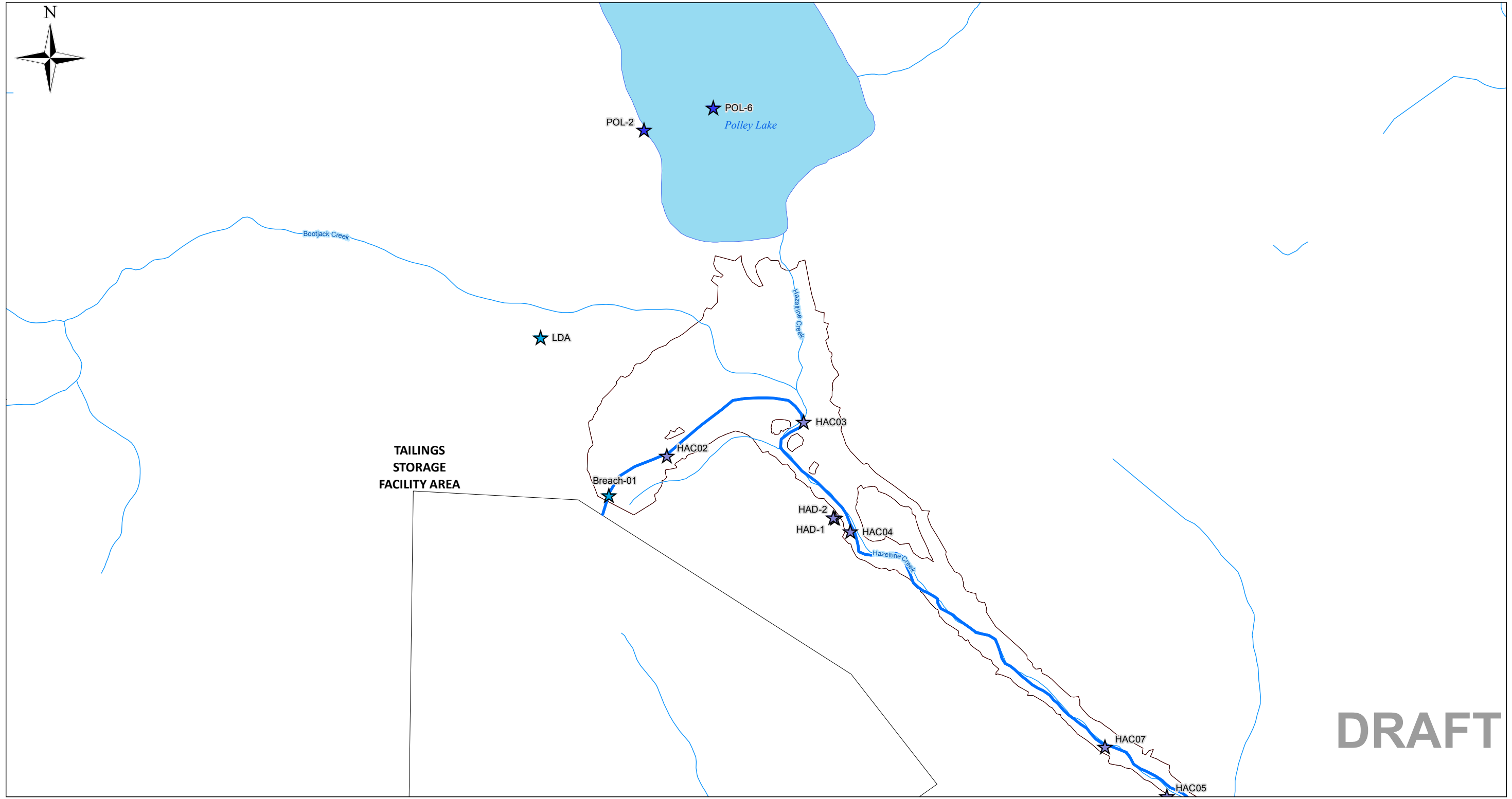


CLIENT NAME: MPMC	PROJECT LOCATION: Mount Polley Mine, British Columbia
----------------------	---

Figure 5: Current Monitoring Locations
Page 1 of 8

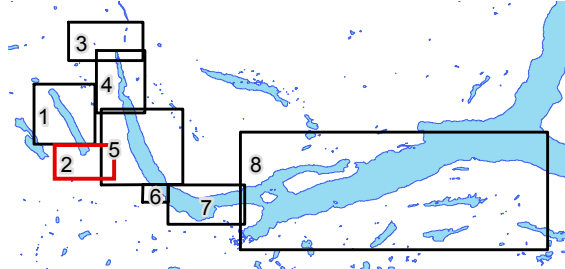
BY: CJW	SCALE: 1:24,500	DATE: 2014/11/05	REF No: 621717-005-P1	REV: 7
CHK'D: JL	PROJ COORD SYS: NAD 1983 UTM Zone 10N			

MXD Path: \\Proj_srv\projects\LOB\IAM-BC\Current Projects\Mount Polley Mining Corporation\621717_Execution\4.5 GIS and Drawings\GIS\621717-005_SampleLocPlanSeries.mxd



LEGEND

- Surface Water Sampling Locations**
- ★ Hazeltine Creek
 - ★ Polley Lake
 - ★ Quesnel Lake
 - ★ Other Areas
 - New Hazeltine Creek Channel (Approximate)

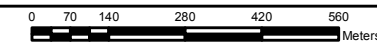


NOTES

1. Original in colour.
 2. Numerical scale reflects full-size print. Print scaling will distort this scale, however scale bar will remain accurate.
 3. Intended for illustration purposes, accuracy has not been verified for construction or navigation purposes.
- * Note: Shoreline has been modified from the Fresh Water Atlas source data in the area of Hazeltine Creek Mouth to reflect post-release conditions.

REFERENCES

1. Data provided by Mount Polley Mining Corporation
2. Data downloaded from Data.Gov.BC.ca Data Distribution Service.
3. Orthophoto collected by McElhanney on August 5th, 2014

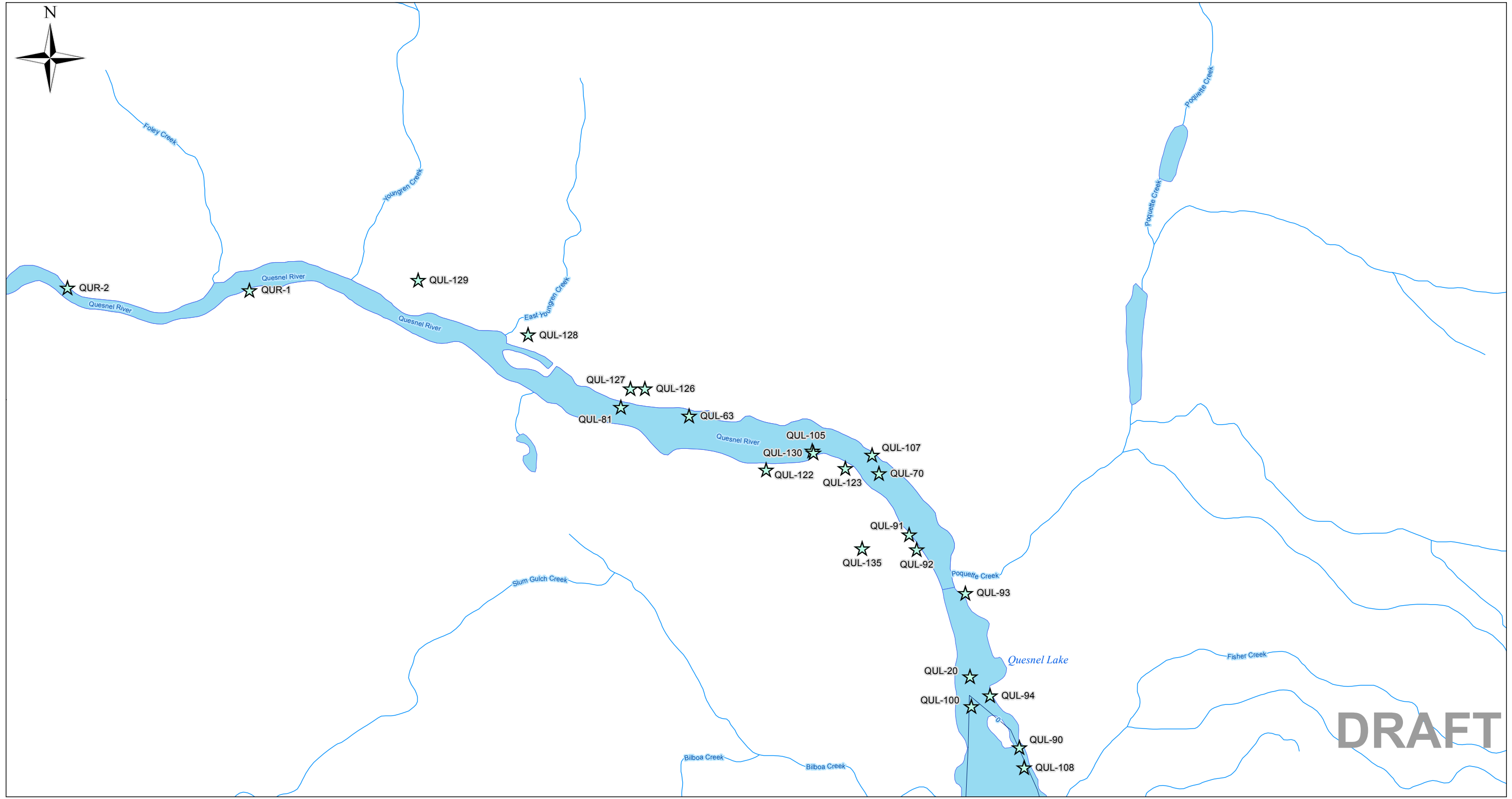


CLIENT NAME: MPMC	PROJECT LOCATION: Mount Polley Mine, British Columbia
----------------------	---

Figure 5: Current Monitoring Locations
Page 2 of 8

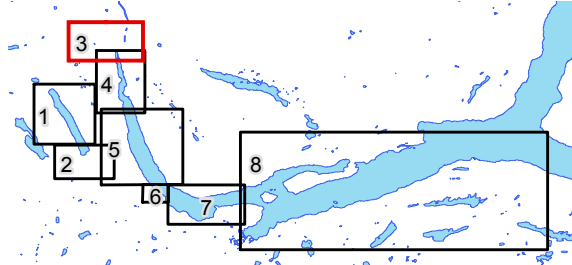
BY: CJW	SCALE: 1:13,800	DATE: 2014/11/05	REF No: 621717-005-P2	REV: 7
CHK'D: JL	PROJ COORD SYS: NAD 1983 UTM Zone 10N			

MXD Path: \\Proj_srv\projects\LOB\IAM-BC\Current Projects\Mount Polley Mining Corporation\621717_Legally Privileged\4.0 Execution\4.5 GIS and Drawings\GIS\621717-005_SampleLocPlanSeries.mxd



LEGEND

- Surface Water Sampling Locations**
- ★ Hazeltine Creek
 - ★ Polley Lake
 - ★ Quesnel Lake
 - ★ Other Areas

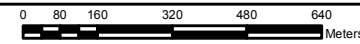


NOTES

1. Original in colour.
 2. Numerical scale reflects full-size print. Print scaling will distort this scale, however scale bar will remain accurate.
 3. Intended for illustration purposes, accuracy has not been verified for construction or navigation purposes.
- * Note: Shoreline has been modified from the Fresh Water Atlas source data in the area of Hazeltine Creek Mouth to reflect post-release conditions.

REFERENCES

1. Data provided by Mount Polley Mining Corporation
2. Data downloaded from Data.Gov.BC.ca Data Distribution Service.
3. Orthophoto collected by McElhanney on August 5th, 2014

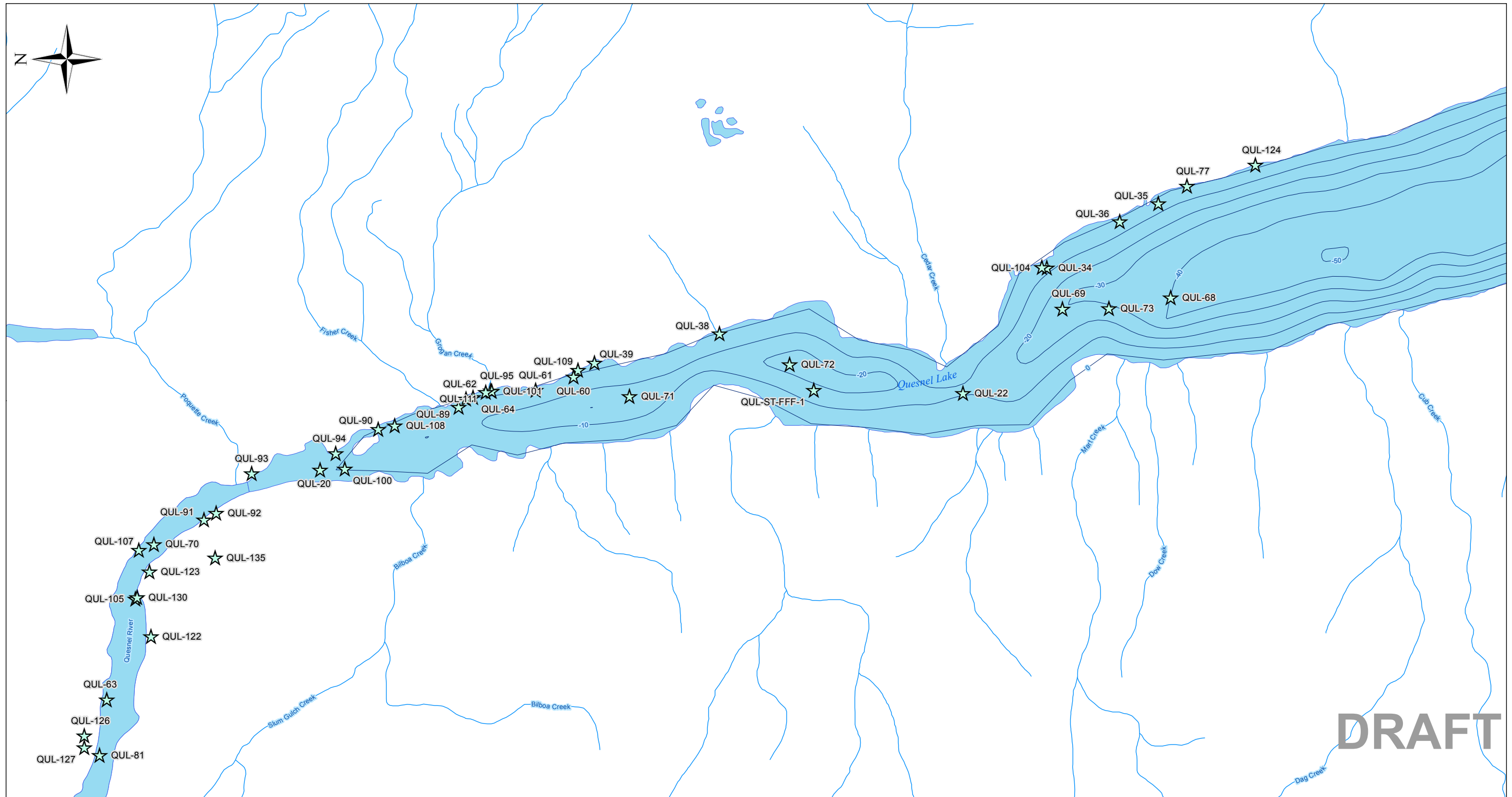


CLIENT NAME: MPMC	PROJECT LOCATION: Mount Polley Mine, British Columbia
----------------------	---

Figure 5: Current Monitoring Locations
Page 3 of 8

BY: CJW	SCALE: 1:16,200	DATE: 2014/11/05	REF No: 621717-005-P3	REV: 7
CHK'D: JL	PROJ COORD SYS: NAD 1983 UTM Zone 10N			

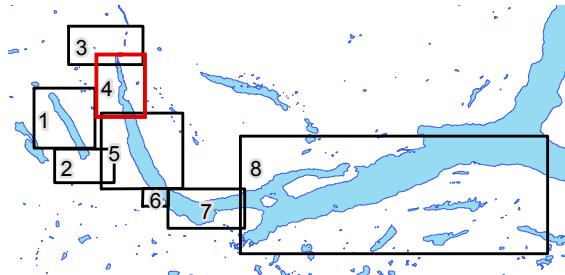
MXD Path: \\Proj_srv\projects\LOB\EIAM-BC\Current Projects\Mount Polley Mining Corporation\621717_Legally Privileged\4.0 Execution\4.5 GIS and Drawings\GIS\621717-005_SampleLocPlanSeries.mxd



LEGEND

Surface Water Sampling Locations

- ★ Hazeltine Creek
- ★ Polley Lake
- ★ Quesnel Lake
- ★ Other Areas

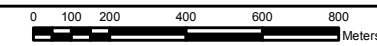


NOTES

1. Original in colour.
 2. Numerical scale reflects full-size print. Print scaling will distort this scale, however scale bar will remain accurate.
 3. Intended for illustration purposes, accuracy has not been verified for construction or navigation purposes.
- * Note: Shoreline has been modified from the Fresh Water Atlas source data in the area of Hazeltine Creek Mouth to reflect post-release conditions.

REFERENCES

1. Data provided by Mount Polley Mining Corporation
2. Data downloaded from Data.Gov.BC.ca Data Distribution Service.
3. Orthophoto collected by McElhanney on August 5th, 2014



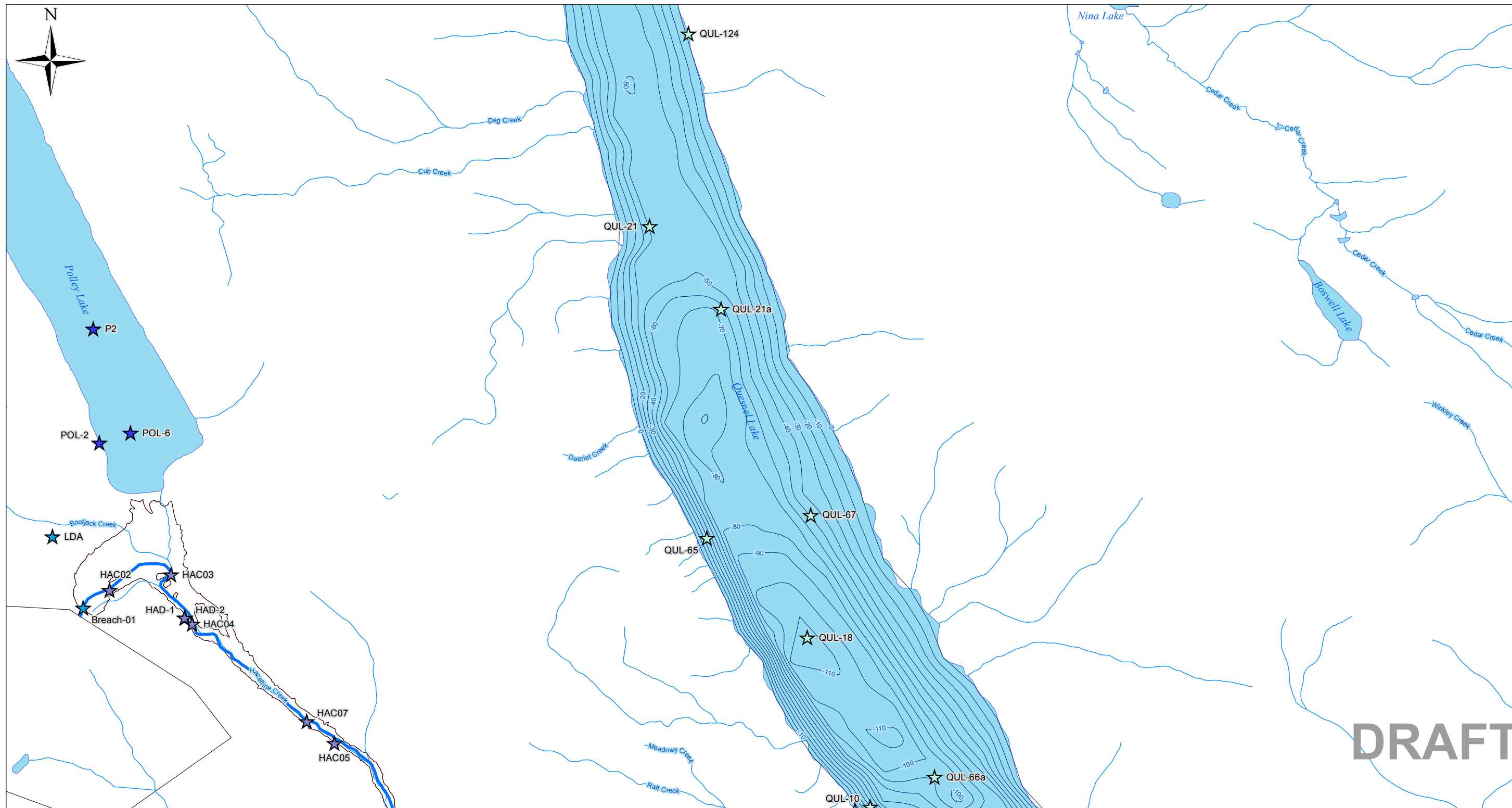
CLIENT NAME: MPMC	PROJECT LOCATION: Mount Polley Mine, British Columbia
----------------------	---

Figure 5: Current Monitoring Locations
Page 4 of 8

BY: CJW	SCALE: 1:19,800	DATE: 2014/11/05	REF No: 621717-005-P4	REV: 7
CHK'D: JL	PROJ COORD SYS: NAD 1983 UTM Zone 10N			

DRAFT

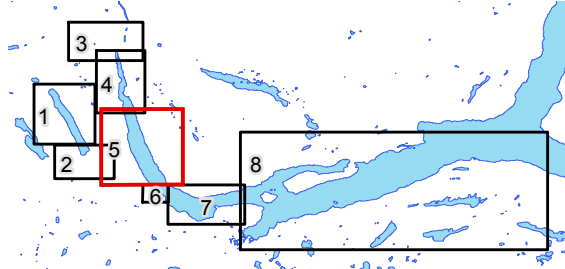
MXD Path: \\Proj_srv\projects\LOB\IAM-BC\Current Projects\Mount Polley Mining Corporation\621717_Execution\4.5 GIS and Drawings\GIS\621717-005_SampleLocPlanSeries.mxd



LEGEND

Surface Water Sampling Locations

- ★ Hazelton Creek
- ★ Polley Lake
- ★ Quesnel Lake
- ★ Other Areas
- New Hazelton Creek Channel (Approximate)

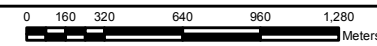


NOTES

1. Original in colour.
 2. Numerical scale reflects full-size print. Print scaling will distort this scale, however scale bar will remain accurate.
 3. Intended for illustration purposes, accuracy has not been verified for construction or navigation purposes.
- * Note: Shoreline has been modified from the Fresh Water Atlas source data in the area of Hazelton Creek Mouth to reflect post-release conditions.

REFERENCES

1. Data provided by Mount Polley Mining Corporation
2. Data downloaded from Data.Gov.BC.ca Data Distribution Service.
3. Orthophoto collected by McElhanney on August 5th, 2014

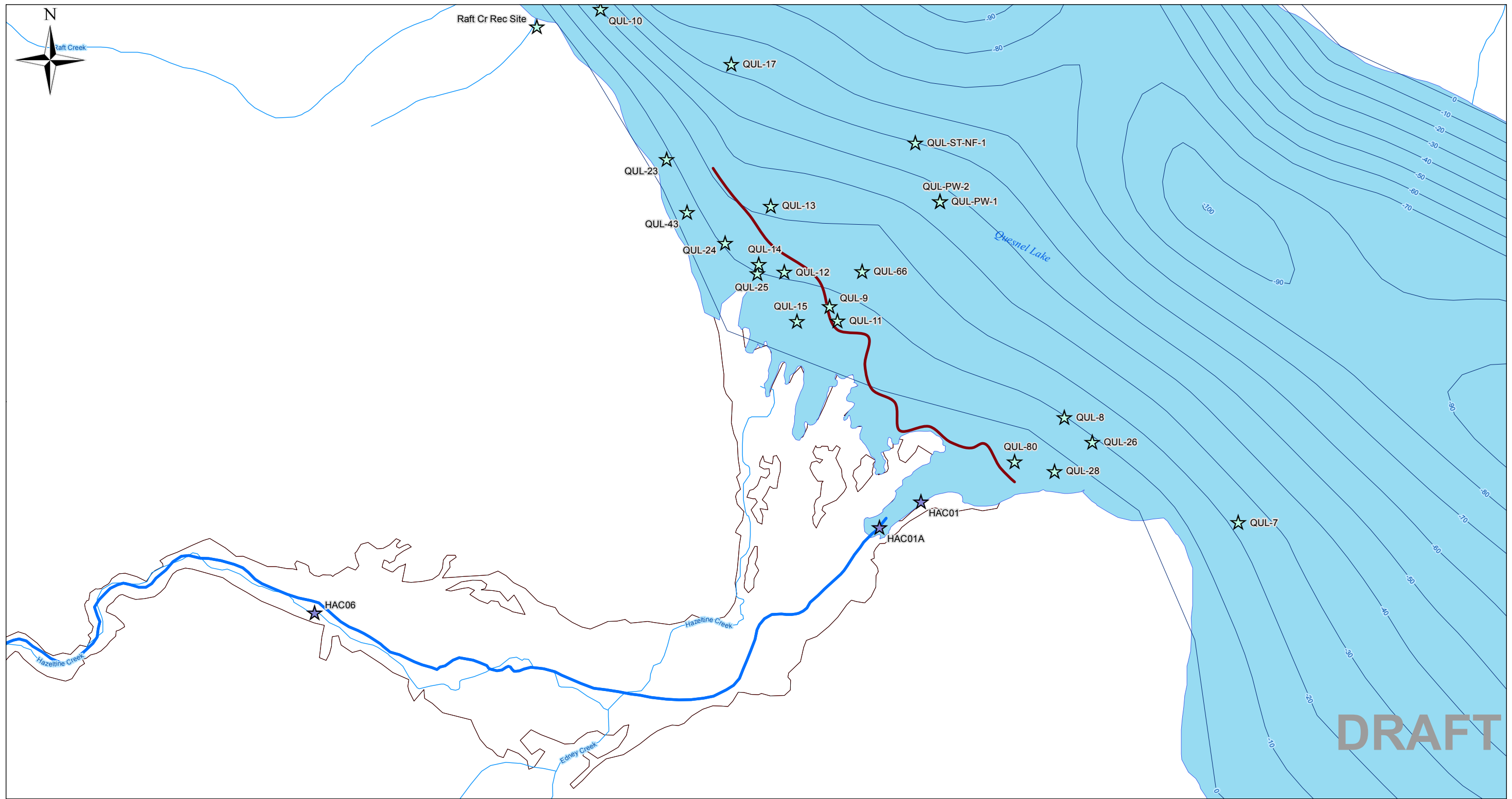


CLIENT NAME: MPMC
 PROJECT LOCATION: Mount Polley Mine, British Columbia

Figure 5: Current Monitoring Locations
 Page 5 of 8

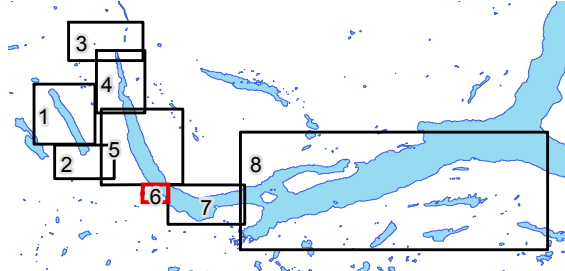
BY: CJW	SCALE: 1:31,000	DATE: 2014/11/05	REF No: 621717-005-P5	REV: 7
CHK'D: JL	PROJ COORD SYS: NAD 1983 UTM Zone 10N			

MXD Path: \\Proj_srv\projects\LOB\IAM-BC\Current Projects\Mount Polley Mining Corporation\621717_Execution\4.5 GIS and Drawings\GIS\621717-005_SampleLocPlanSeries.mxd



LEGEND

- Surface Water Sampling Locations**
- Hazeltine Creek
 - Polley Lake
 - Quesnel Lake
 - Other Areas
 - Silt Curtain/Log Boom
 - New Hazeltine Creek Channel (Approximate)

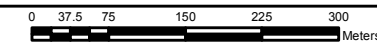


NOTES

1. Original in colour.
 2. Numerical scale reflects full-size print. Print scaling will distort this scale, however scale bar will remain accurate.
 3. Intended for illustration purposes, accuracy has not been verified for construction or navigation purposes.
- * Note: Shoreline has been modified from the Fresh Water Atlas source data in the area of Hazeltine Creek Mouth to reflect post-release conditions.

REFERENCES

1. Data provided by Mount Polley Mining Corporation
2. Data downloaded from Data.Gov.BC.ca Data Distribution Service.
3. Orthophoto collected by McElhanney on August 5th, 2014

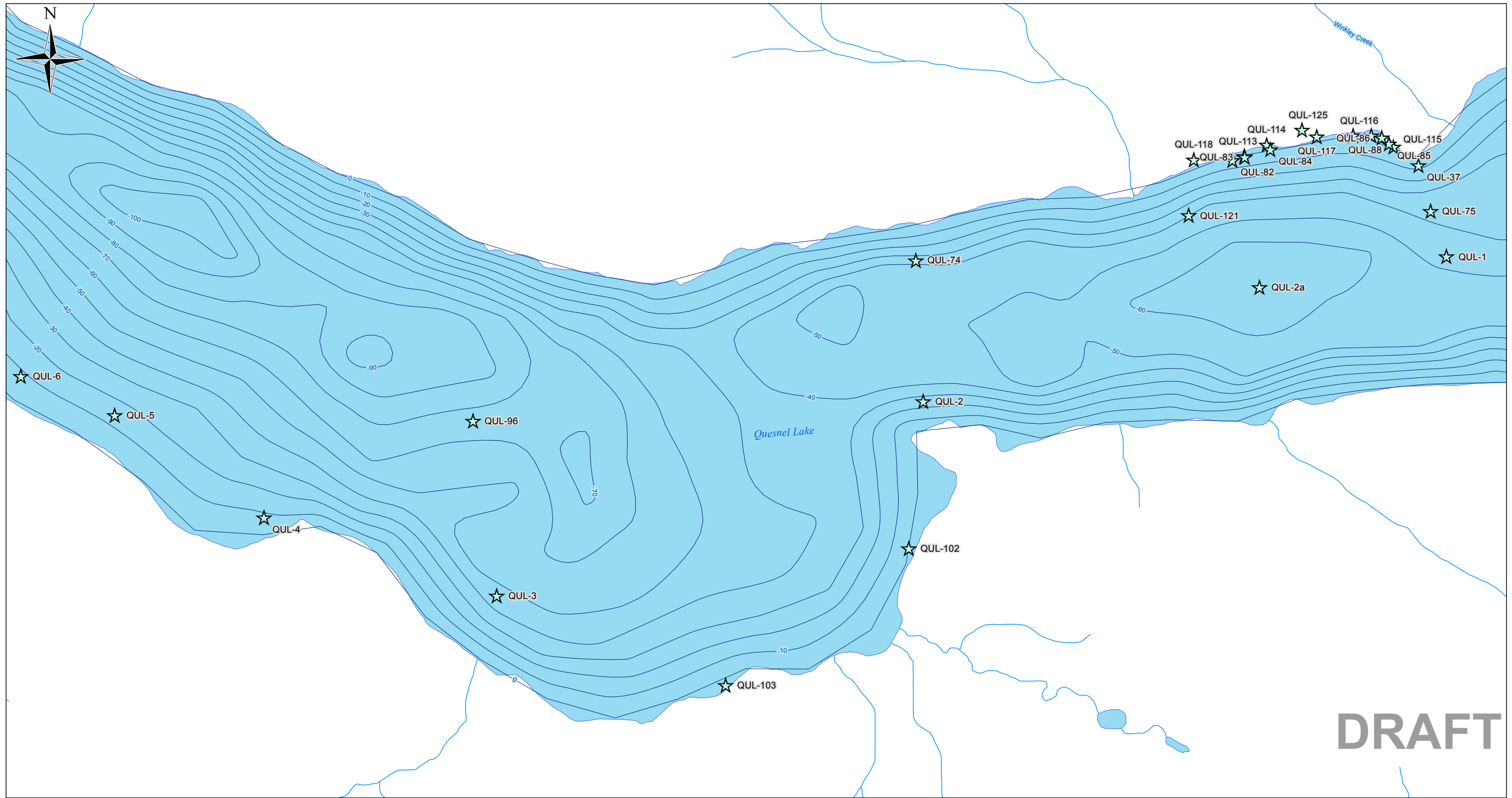


CLIENT NAME: MPMC	PROJECT LOCATION: Mount Polley Mine, British Columbia
----------------------	---

Figure 5: Current Monitoring Locations
Page 6 of 8

BY: CJW	SCALE: 1:7,400	DATE: 2014/11/05	REF No: 621717-005-P6	REV: 7
CHK'D: JL	PROJ COORD SYS: NAD 1983 UTM Zone 10N			

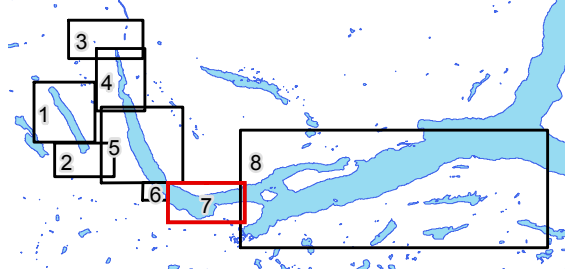
MXD Path: \\Proj_srv\projects\LOB\EIAM-BC\Current Projects\Mount Polley Mining Corporation\621717_Legally Privileged\4.0 Execution\4.5 GIS and Drawings\GIS\621717-005_SampleLocPlanSeries.mxd



LEGEND

Surface Water Sampling Locations

- ★ Hazeltine Creek
- ★ Polley Lake
- ★ Quesnel Lake
- ★ Other Areas

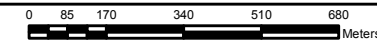


NOTES

1. Original in colour.
 2. Numerical scale reflects full-size print. Print scaling will distort this scale, however scale bar will remain accurate.
 3. Intended for illustration purposes, accuracy has not been verified for construction or navigation purposes.
- * Note: Shoreline has been modified from the Fresh Water Atlas source data in the area of Hazeltine Creek Mouth to reflect post-release conditions.

REFERENCES

1. Data provided by Mount Polley Mining Corporation
2. Data downloaded from Data.Gov.BC.ca Data Distribution Service.
3. Orthophoto collected by McElhanney on August 5th, 2014



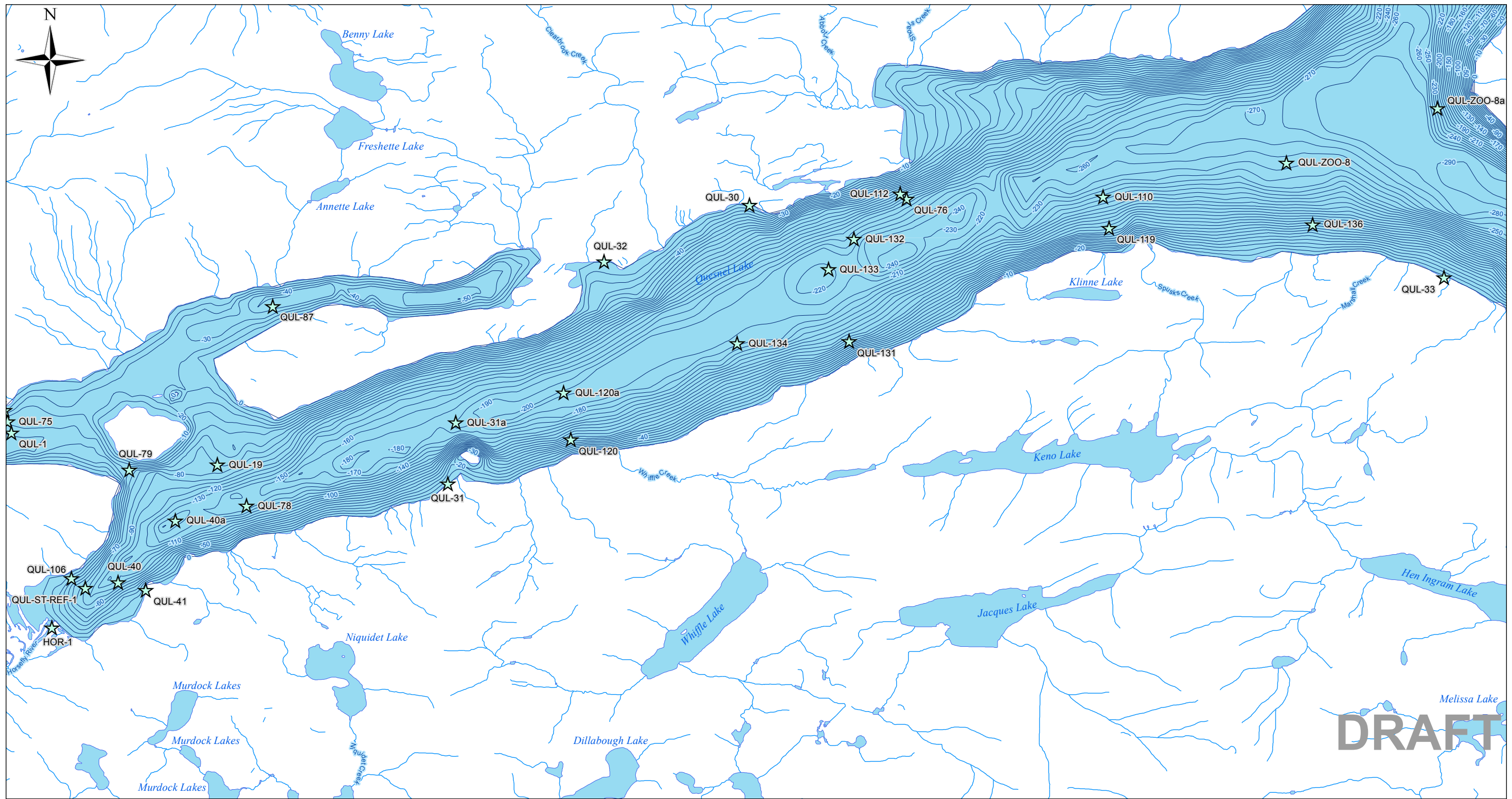
CLIENT NAME: MPMC
 PROJECT LOCATION: Mount Polley Mine, British Columbia

**Figure 5: Current Monitoring Locations
 Page 7 of 8**

BY: CJW	SCALE: 1:16,600	DATE: 2014/11/05	REF No: 621717-005-P7	REV: 7
CHK'D: JL	PROJ COORD SYS: NAD 1983 UTM Zone 10N			

DRAFT

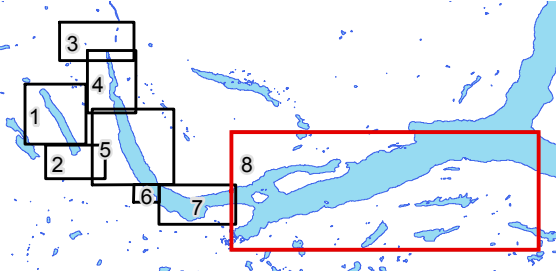
MXD Path: \\Proj_srv\projects\LOB\IAM-BC\Current Projects\Mount Polley Mining Corporation\621717_Execution\4.5 GIS and Drawings\4.5 GIS and Drawings\621717-005_SampleLocPlanSeries.mxd



LEGEND

Surface Water Sampling Locations

- ★ Hazeltine Creek
- ★ Polley Lake
- ★ Quesnel Lake
- ★ Other Areas

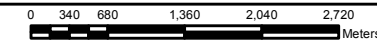


NOTES

1. Original in colour.
 2. Numerical scale reflects full-size print. Print scaling will distort this scale, however scale bar will remain accurate.
 3. Intended for illustration purposes, accuracy has not been verified for construction or navigation purposes.
- * Note: Shoreline has been modified from the Fresh Water Atlas source data in the area of Hazeltine Creek Mouth to reflect post-release conditions.

REFERENCES

1. Data provided by Mount Polley Mining Corporation
2. Data downloaded from Data.Gov.BC.ca Data Distribution Service.
3. Orthophoto collected by McElhanney on August 5th, 2014



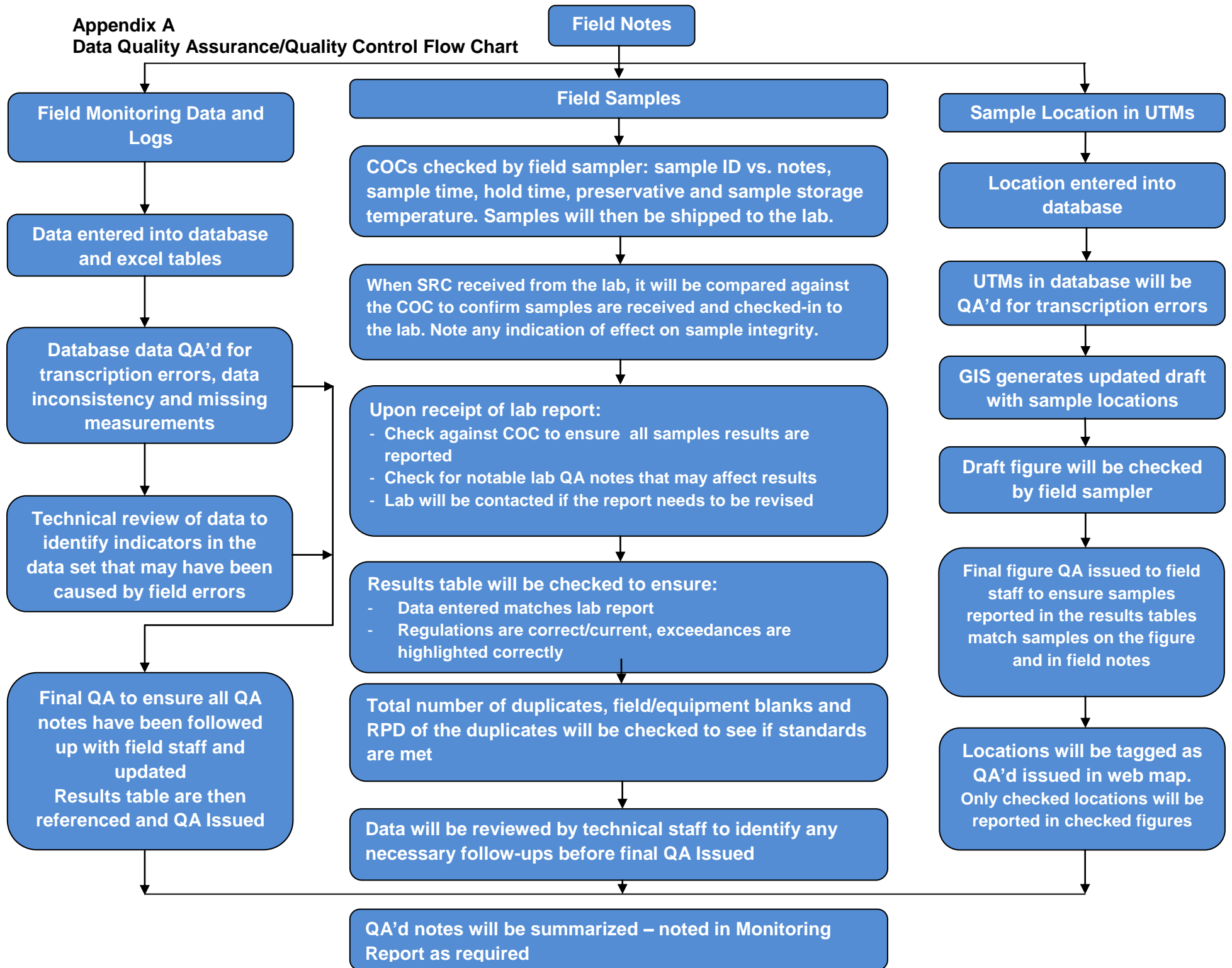
CLIENT NAME: MPMC	PROJECT LOCATION: Mount Polley Mine, British Columbia
----------------------	---

Figure 5: Current Monitoring Locations
Page 8 of 8

BY: CJW	SCALE: 1:66,800	DATE: 2014/11/05	REF No: 621717-005-P8	REV: 7
CHKD: JL	PROJ COORD SYS: NAD 1983 UTM Zone 10N			

MXD Path: \\Proj_srv\projects\LOB\IAM-BC\Current Projects\Mount Polley Mining Corporation\621717_005-P8\Drawings\GIS\621717-005_SampleLocPlanSeries.mxd

**Appendix A
Data Quality Assurance/Quality Control Flow Chart**



Appendix A

Data Quality Assurance/Quality Control Flow Chart

Legend

COC – Chain of Custody
GIS – Geology Information System
ID – Identification number
QA – quality assured
RPD - Relative Percent Difference
SRC – Sample Receive Confirmation
UTM - Universal Transverse Mercator