



Mount Polley Mining Corporation

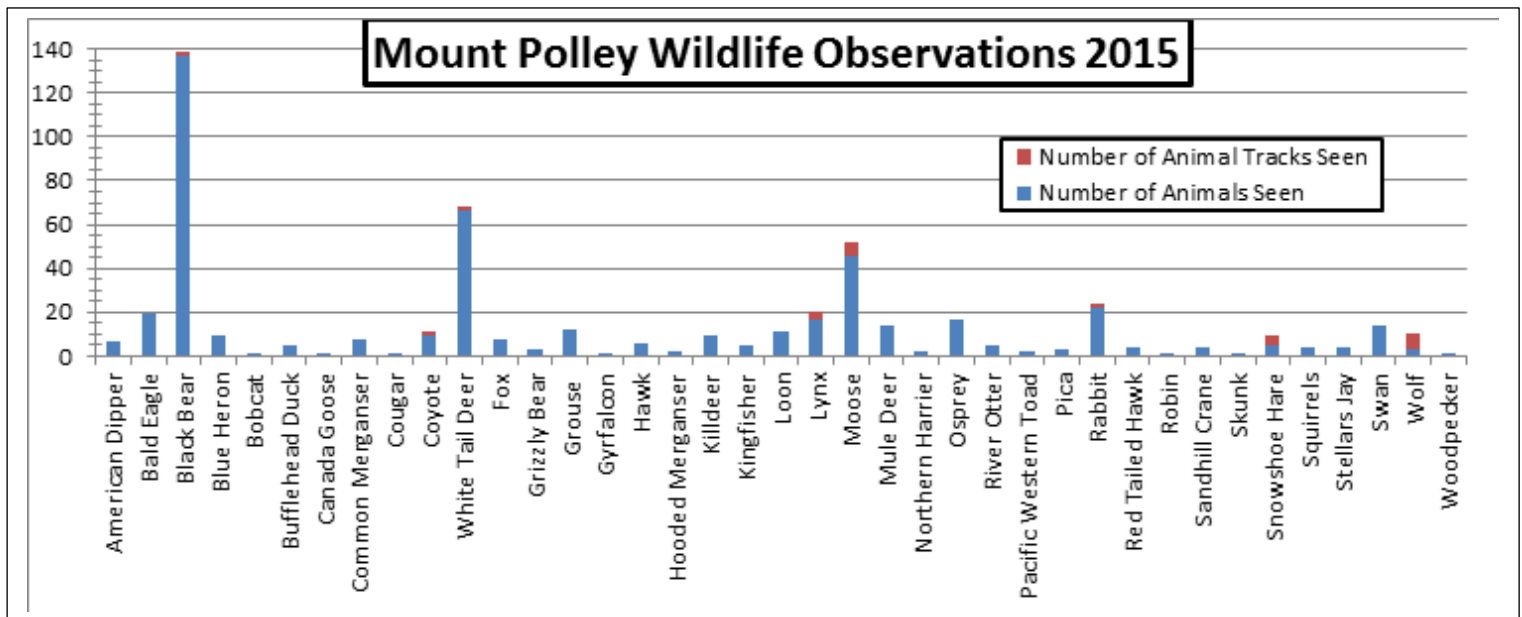
an Imperial Metals company

Box 12 Likely, BC V0L 1N0 T 250.790.2215 F 250.790.2613

March 2016 Update

Healthiness of an ecosystem depends on the diversity of its flora and fauna. Mount Polley Mining Corporation (MPMC) continually monitors sightings and tracks of various wildlife throughout the mine site and the surrounding area.

In 2015, the most common animal observed was the black bear with over a 130 sightings, followed by deer at 66 and moose at 46 observations. The number of tracks is counted by instance seen, not by how many footprints. As seen in the bar graph below, almost 40 different species were identified for a total of 490 sightings in 2015 (this graph excludes fish and insects).



In comparison to 2014, the amount of sightings in 2015 has nearly doubled due to the attentive employees recording their observations and the noticeable presence of wildlife around the site.



Figure 1. Moose at Polley Lake, March 2015.



Figure 2. Three bears on North East Zone, October 2015.

Between January to March 2016, 14 species have been observed – most notably lynx, American dippers and coyotes. Lynx and lynx track sightings have already surpassed those of last year; increasing from 20 to 23. The presence of American dippers has also increased and the number of coyote and coyote tracks are equal to 2015’s total.

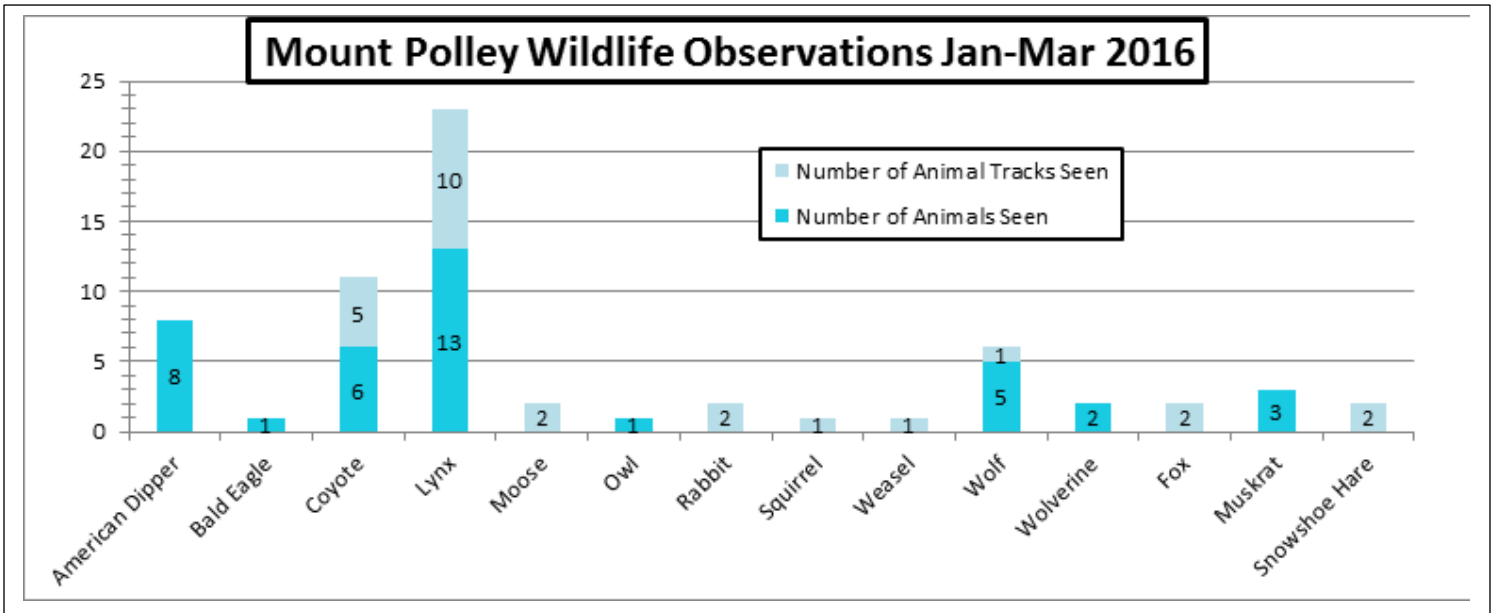


Figure 3. Lone wolf by the Gavin Lake Road, February 2016.



Figure 4. Lynx and her kittens by Polley Lake Rd, January 2016

FUN FACTS

- Did you know that more than one lynx is called a chain of lynx.
- Wolverines are part of the weasel family and also called ‘skunk bears’. Like weasels, a group of wolverines is called a sneak.

Tracking and monitoring of wildlife is valuable information for future reclamation and land use planning. MPMC also provides training regarding management of food waste and bear awareness to keep employees and wildlife safe.