

WHAT IS MOUNT POLLEY MINE DOING ABOUT TURBID WATER?



CLOUDY (TURBID) WATER HAS ENTERED AND IS VISIBLE IN QUESNEL LAKE. TURBID WATER MAY CONTINUE TO UPWELL AND FLOW OUT OF THE LAKE OVER THE COMING MONTHS.

Main Sources of Sediment

Controlling Sources

Actions



Remaining Tailings

- Seal off the Tailings Storage Facility
- Collect and divert Tailings Storage Facility Drainage to Springer Pit
- Successes on September 4th, refinements ongoing



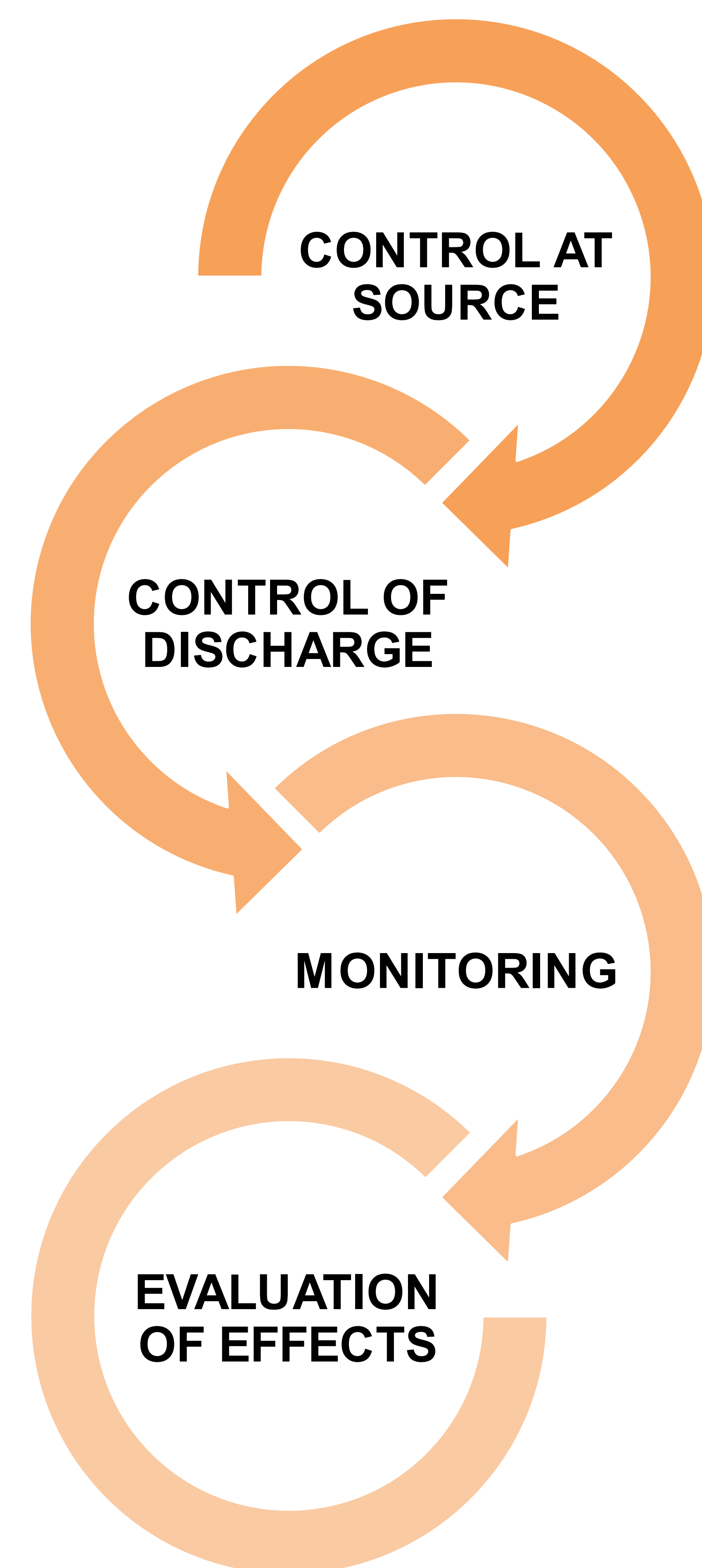
Erosion from Polley Lake Dewatering and Natural Flows

- Polley Lake water level reduction and natural flows can induce erosion.
- Erosion control measures in Hazeltine Creek to:
 - » Reduce erosion from flowing water; and
 - » Trap and remove coarse sediments before they reach Quesnel Lake
(see other posters in this session)



Exposed Tailings

- Access to Hazeltine Creek has only recently been safe
- Helicopter seeding is planned. Grasses will reduce energy impinging on exposed tailings to prevent erosion
- MPMC will partner with UNBC/UBC to research microbial soil genomics to aid in revegetation

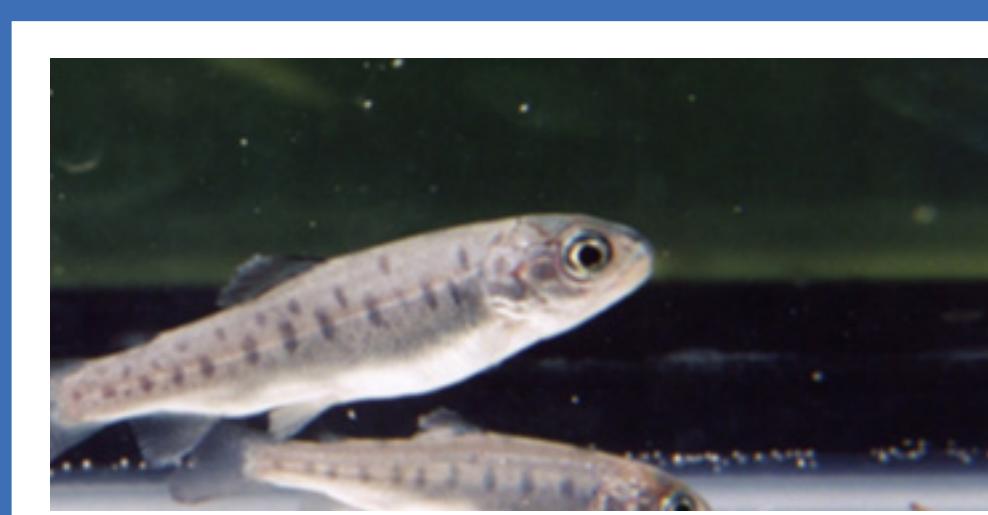


MONITORING

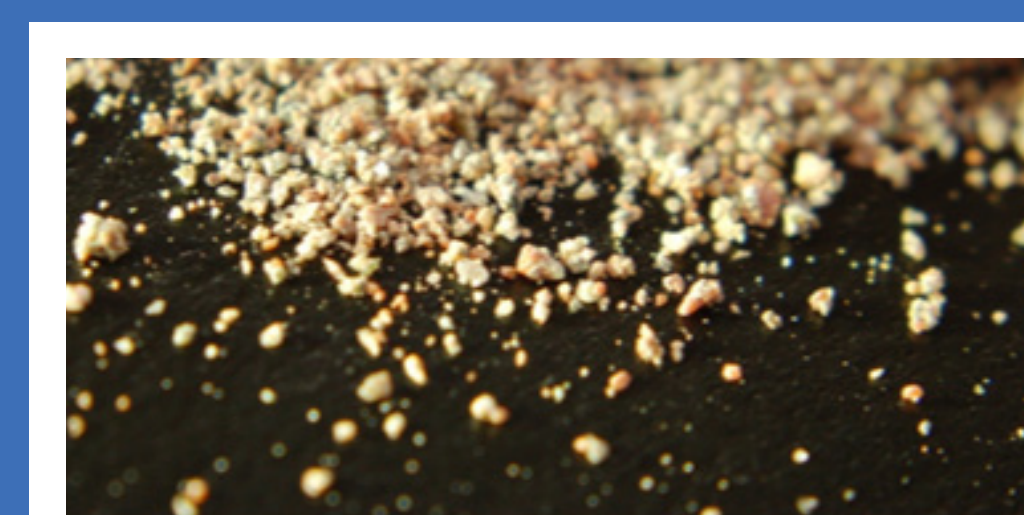
EVALUATION



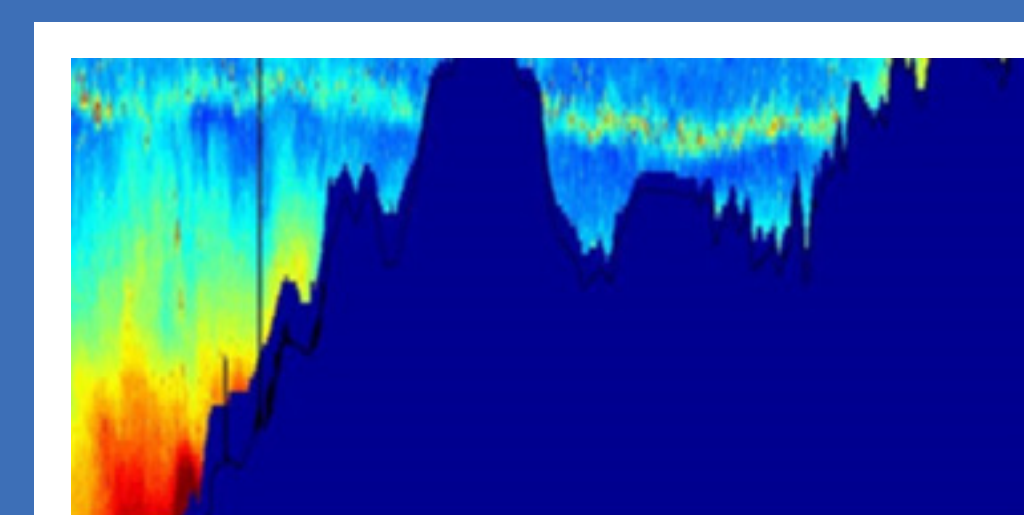
- Discharge monitoring
- Multiple locations and depths
- Turbidity profiling
- Control system monitoring



TOXICITY TESTING



GEOCHEMICAL STUDIES TO EVALUATE LEACHING



WATER QUALITY DATA INTERPRETATION