

Red Chris, British Columbia

April 26, 2023

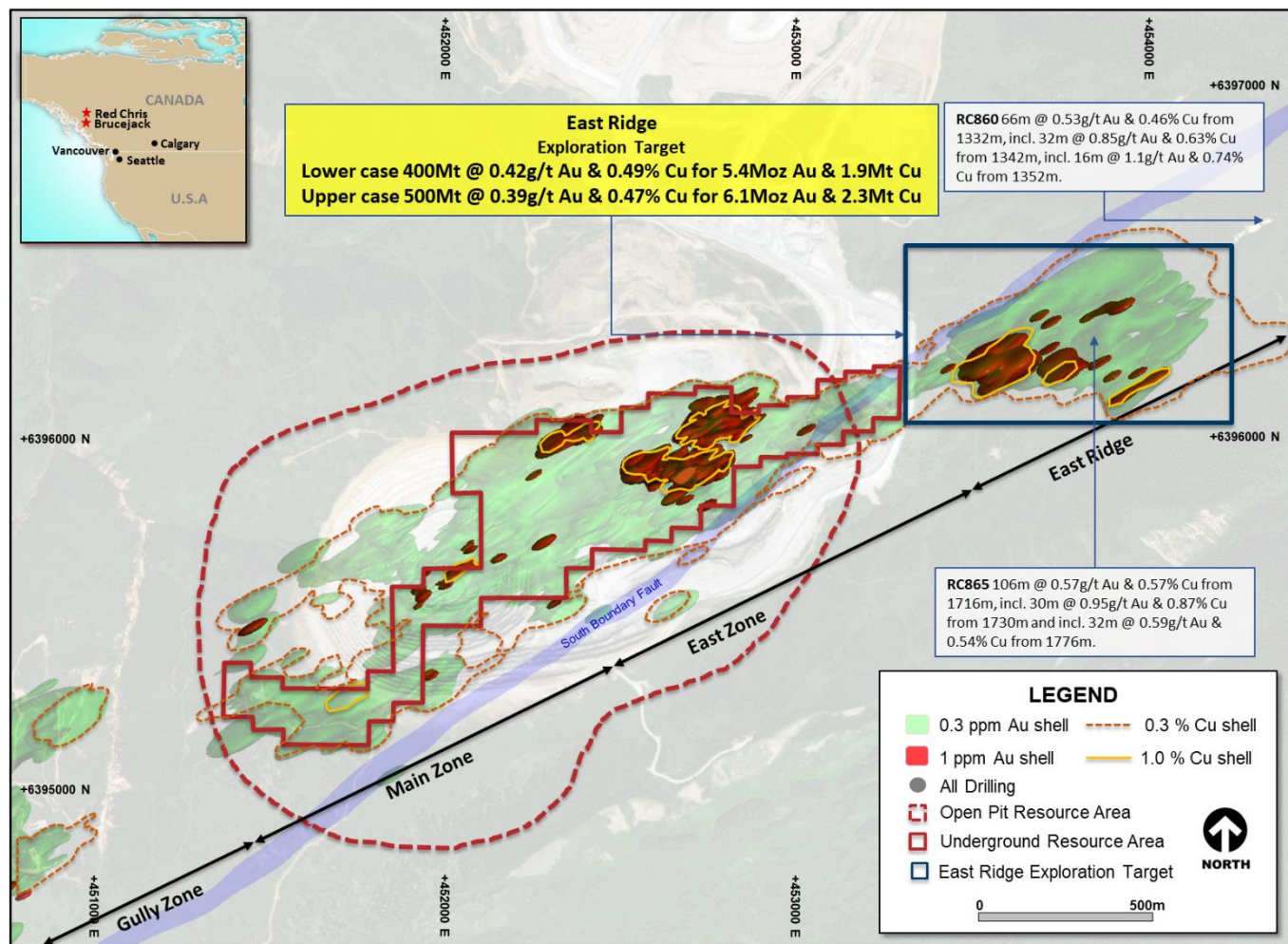


Figure 1. Schematic plan view map of the Red Chris porphyry corridor spanning East Ridge, East Zone, Main Zone and Gully Zone showing significant Newcrest intercepts (drill intercepts have been reported in Appendix 2 of this report), 0.3g/t Au, 1g/t Au, 0.3% Cu and 1% Cu shell projections generated from a Leapfrog™ model.

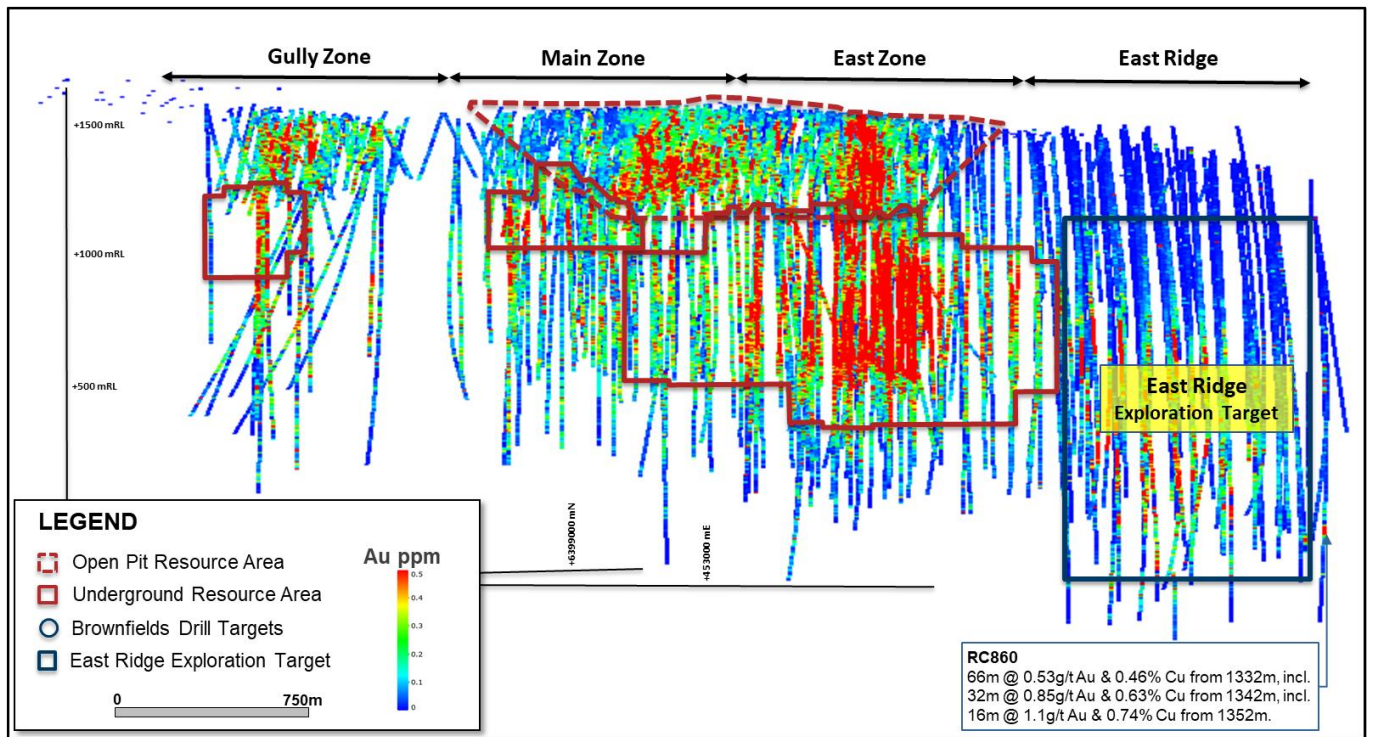


Figure 2. Long section view (looking North West) of the Red Chris porphyry corridor showing drill hole locations, gold distribution and Exploration Target (previously released).

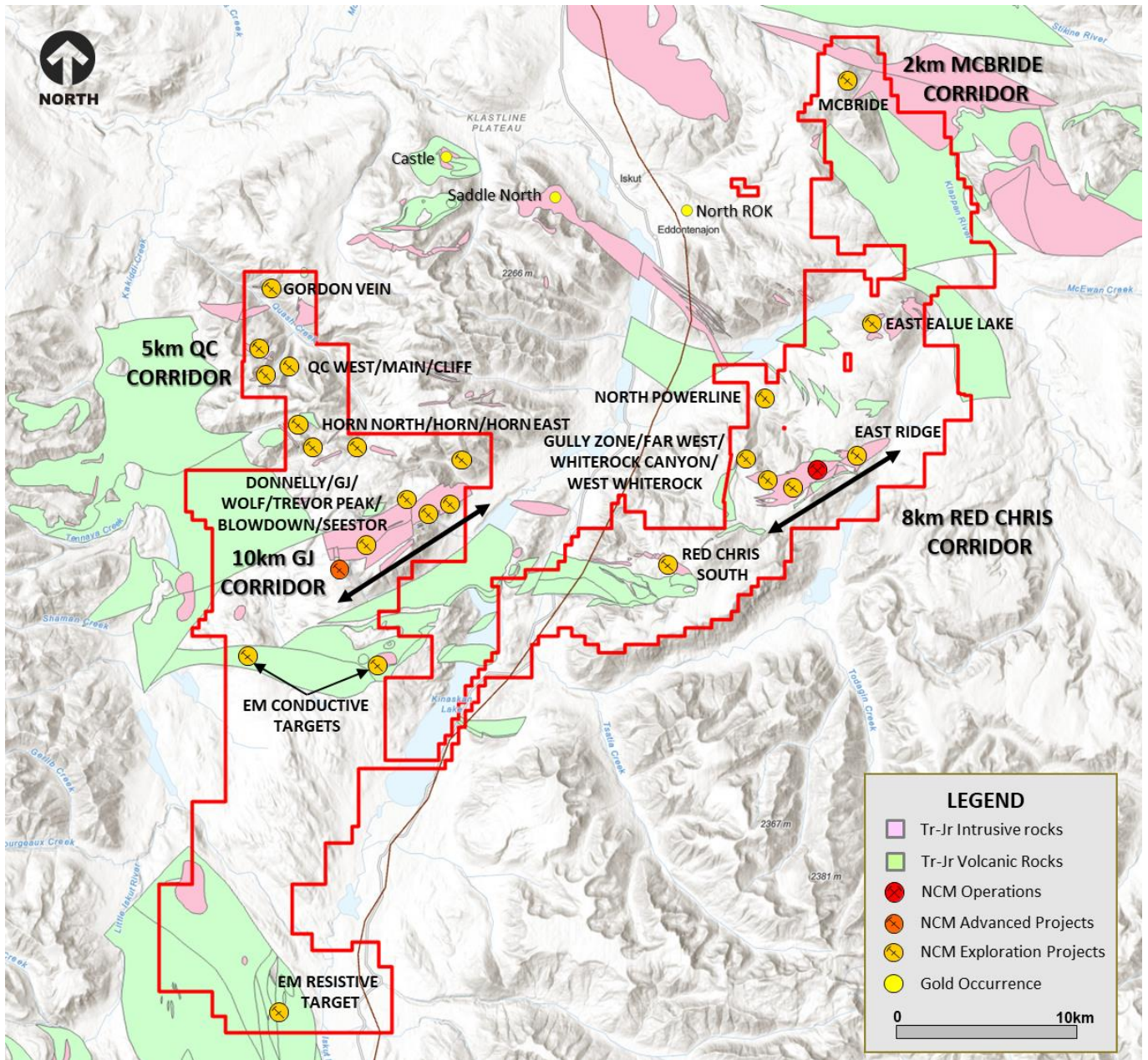


Figure 3. Schematic plan view map of the Red Chris porphyry Cu-Au district spanning the Red Chris, Mc Bride, GJ and QC porphyry corridors showing portfolio of targets.

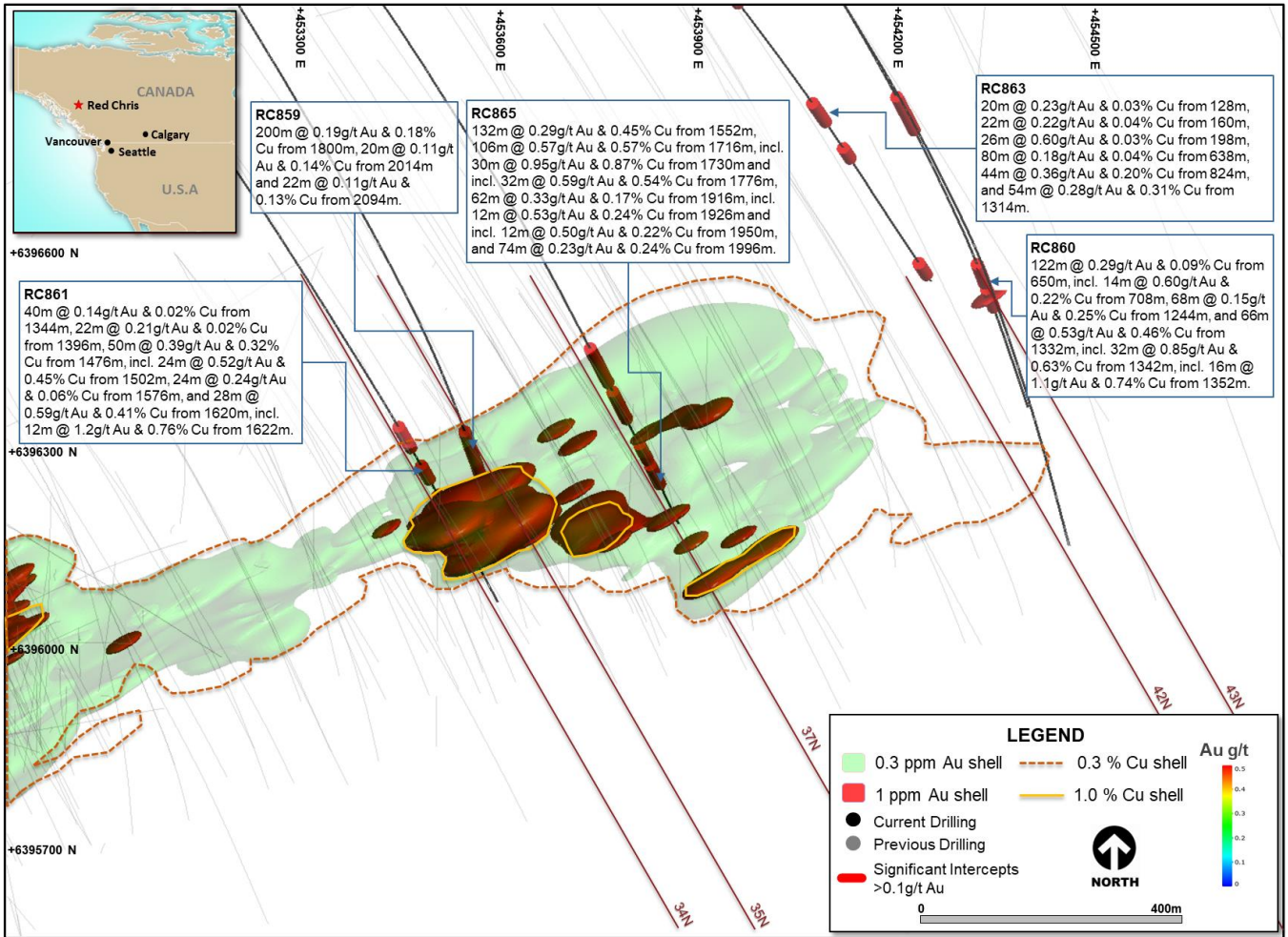


Figure 14. Schematic plan view map of East Ridge showing drill hole locations (Newcrest & Imperial) and significant Newcrest intercepts (drill intercepts have been reported in Appendix 2 of this report, and in prior Newcrest exploration releases). 0.3 g/t Au, 1 g/t Au, 0.3% Cu and 1% Cu shell projections generated from a Leapfrog™ model.

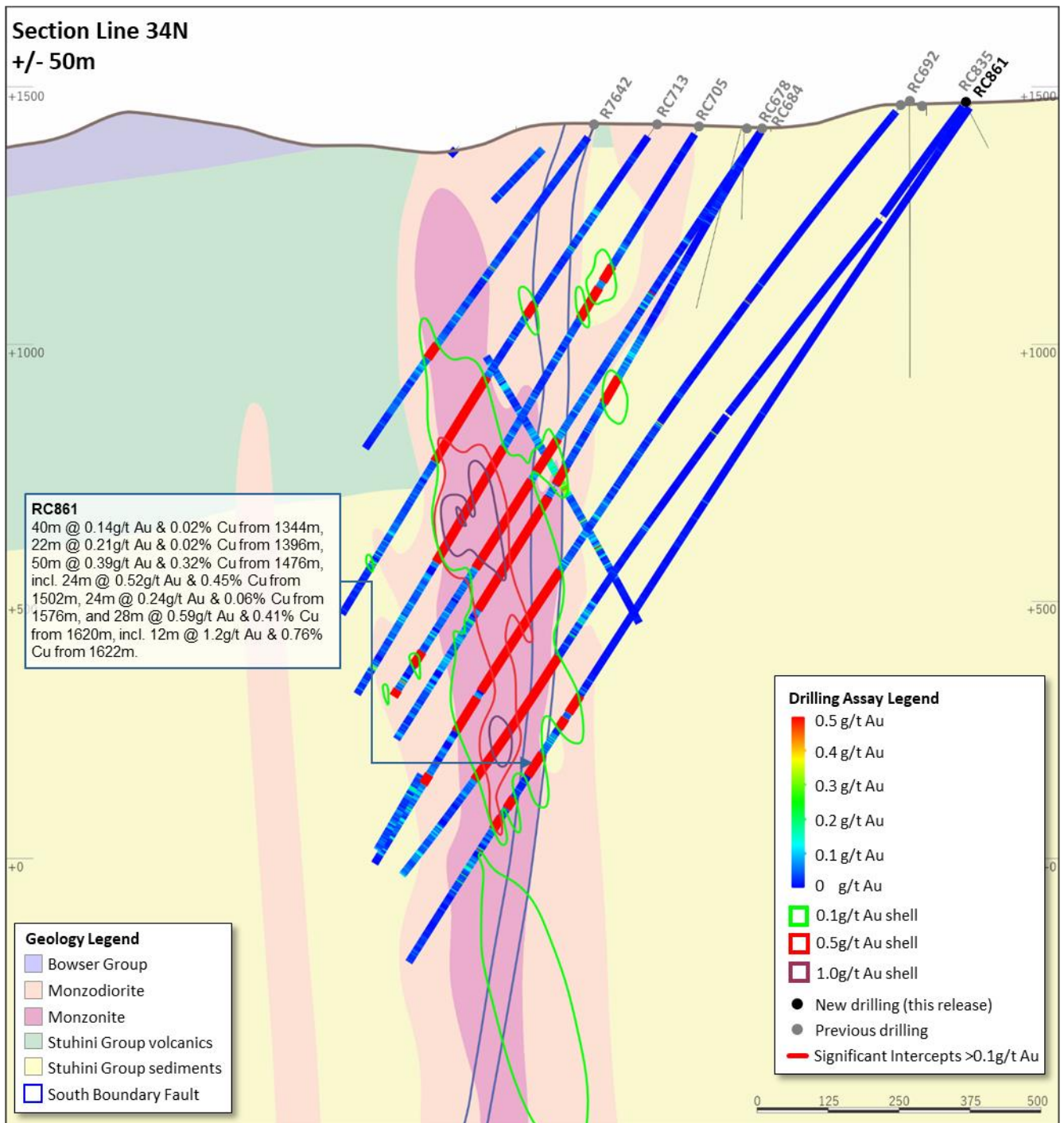


Figure 15. Schematic cross section of RC861 (**Section Line 34N – as shown on Figure 14**) showing Newcrest and Imperial drill holes and Newcrest intercepts (drill intercepts have been reported in Appendix 2 of this report, and in prior Newcrest exploration releases) 0.1 g/t Au, 0.5 g/t Au and 1 g/t Au shell projections generated from Leapfrog™ model. Due to window size (+/- 50m) and section orientation (150°) hole may appear on multiple sections.

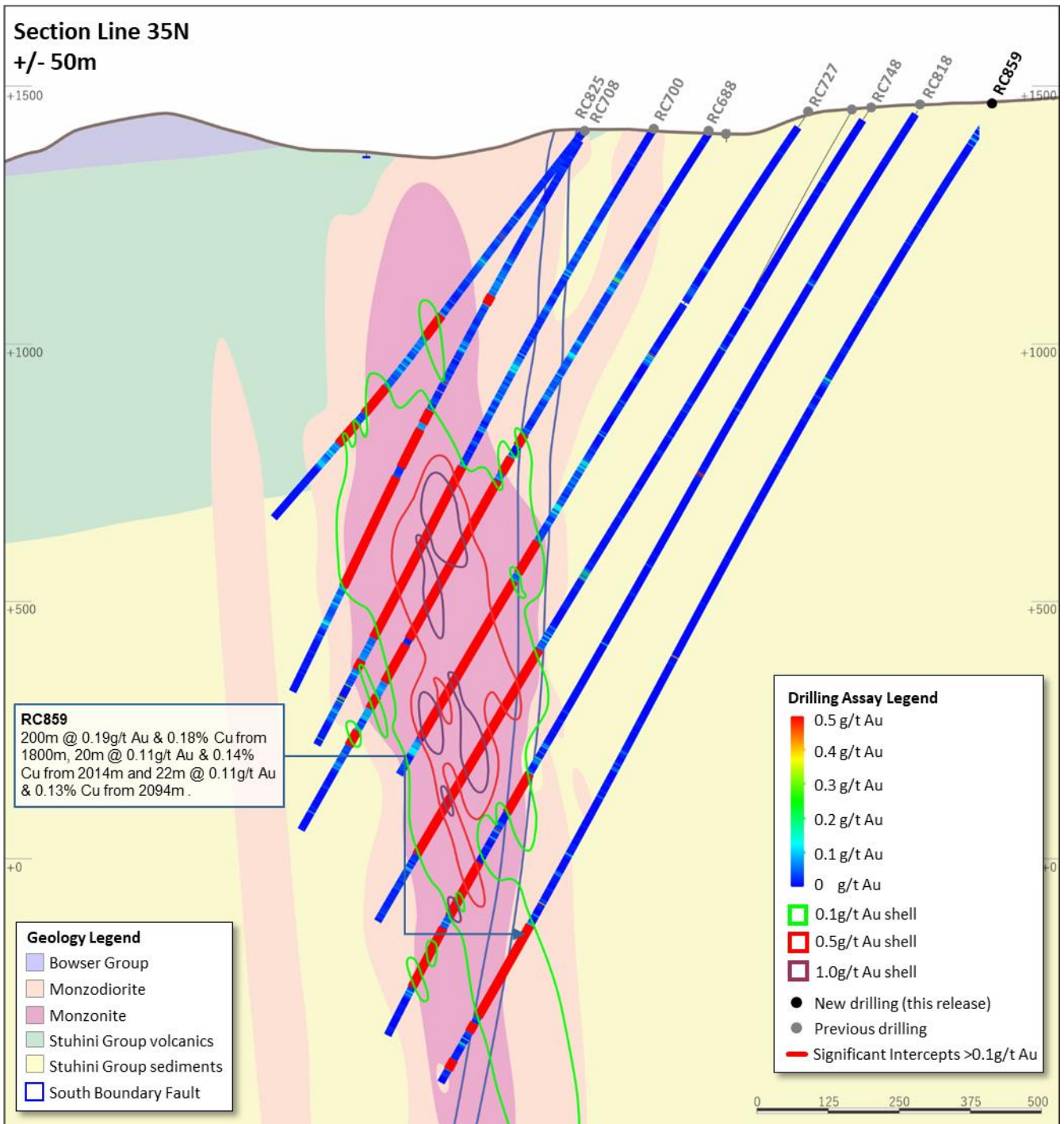


Figure 16. Schematic cross section of RC859 (Section Line 35N – as shown on Figure 14) showing Newcrest and Imperial drill holes and Newcrest intercepts (drill intercepts have been reported in Appendix 2 of this report, and in prior Newcrest exploration releases) 0.1 g/t Au, 0.5 g/t Au and 1 g/t Au shell projections generated from Leapfrog™ model. Due to window size (+/- 50m) and section orientation (150°) hole may appear on multiple sections.

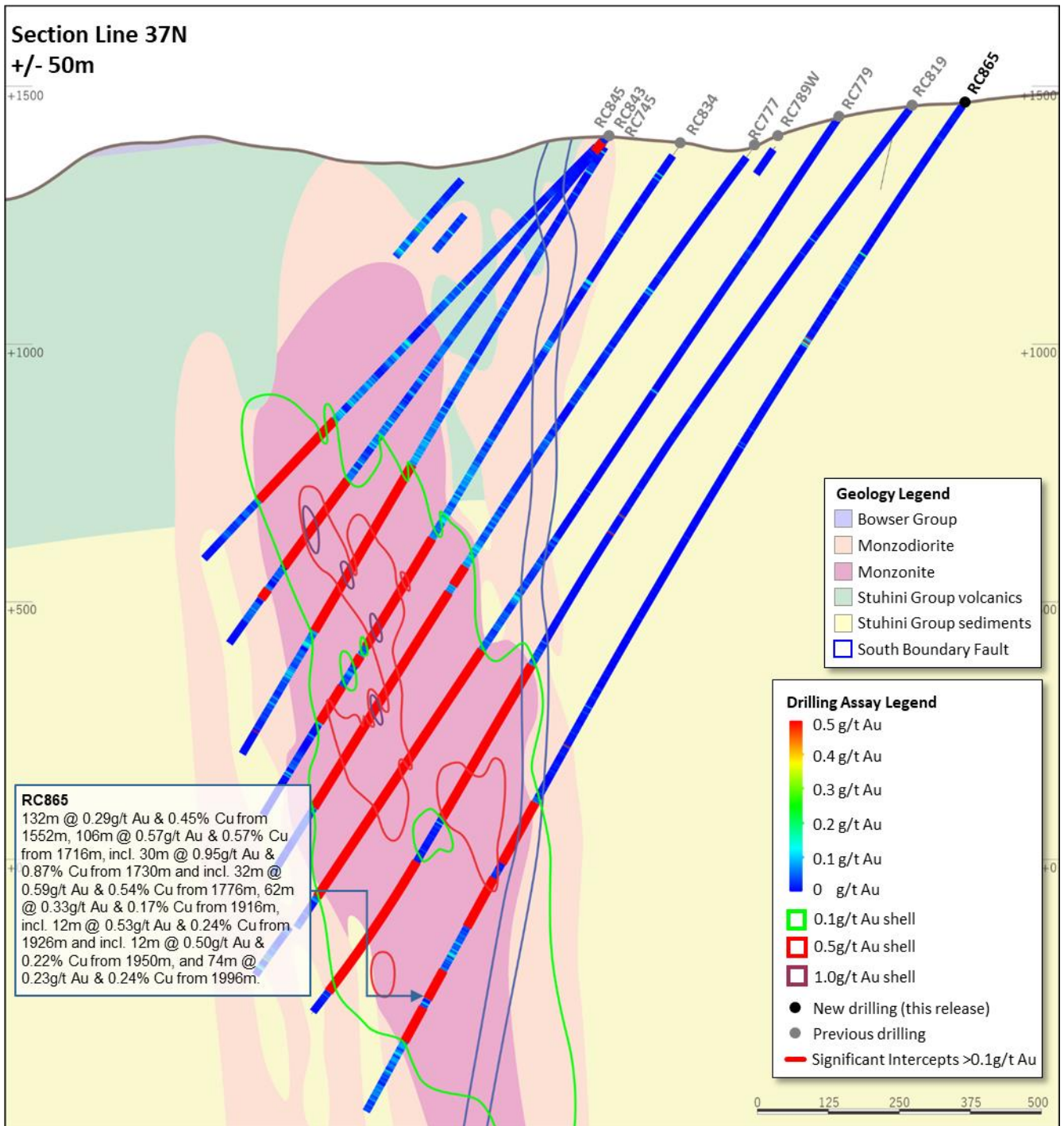


Figure 17. Schematic cross section of RC865 (Section Line 37N – as shown on Figure 14) showing Newcrest and Imperial drill holes and Newcrest intercepts (drill intercepts have been reported in Appendix 2 of this report, and in prior Newcrest exploration releases) 0.1 g/t Au, 0.5 g/t Au and 1 g/t Au shell projections generated from Leapfrog™ model. Due to window size (+/- 50m) and section orientation (150°) hole may appear on multiple sections.

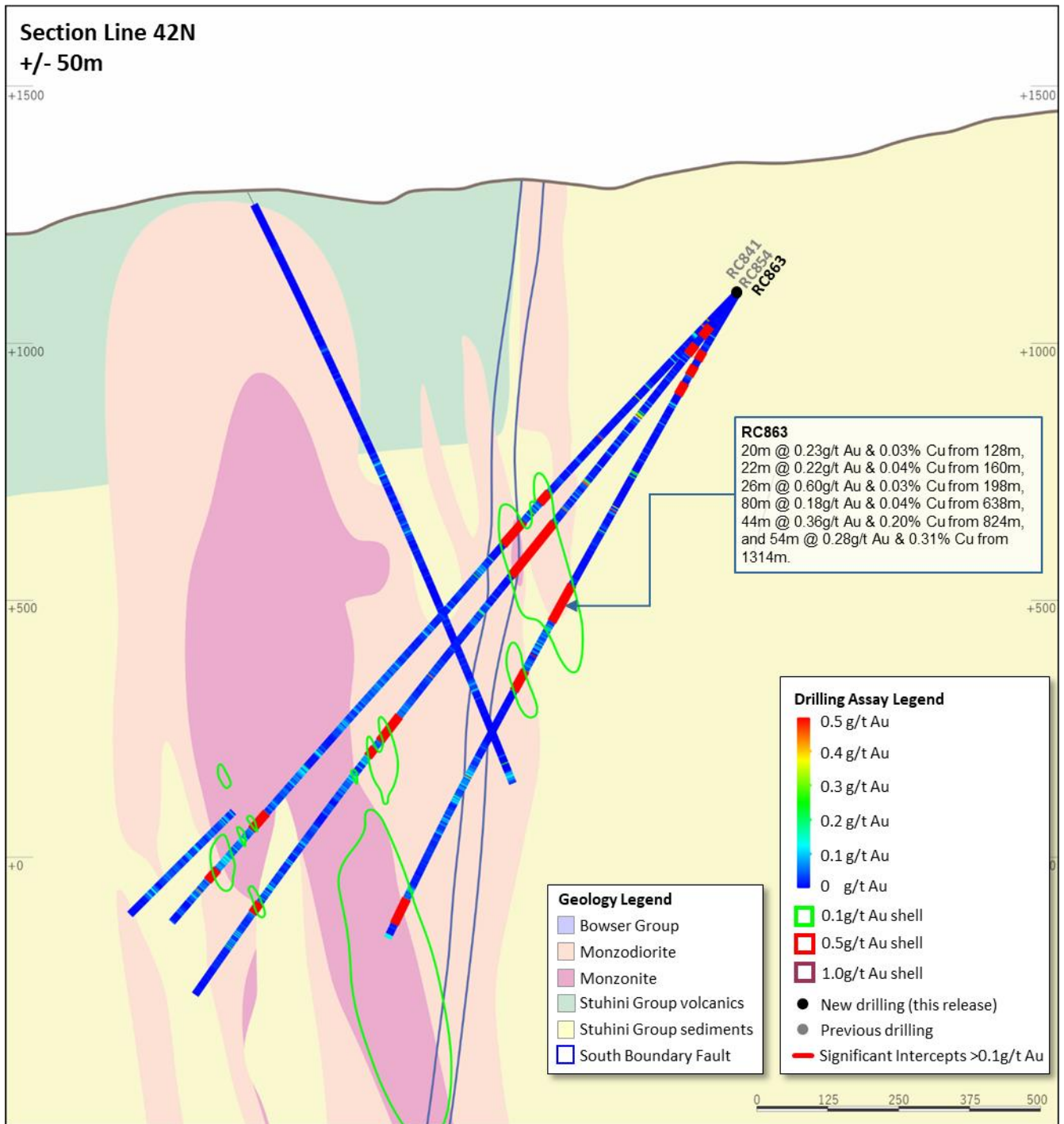


Figure 18. Schematic cross section of RC863 (Section Line 42N – as shown on Figure 14) showing Newcrest and Imperial drill holes and Newcrest intercepts (drill intercepts have been reported in Appendix 2 of this report, and in prior Newcrest exploration releases) 0.1 g/t Au, 0.5 g/t Au and 1 g/t Au shell projections generated from Leapfrog™ model. Due to window size (+/- 50m) and section orientation (150°) hole may appear on multiple sections.

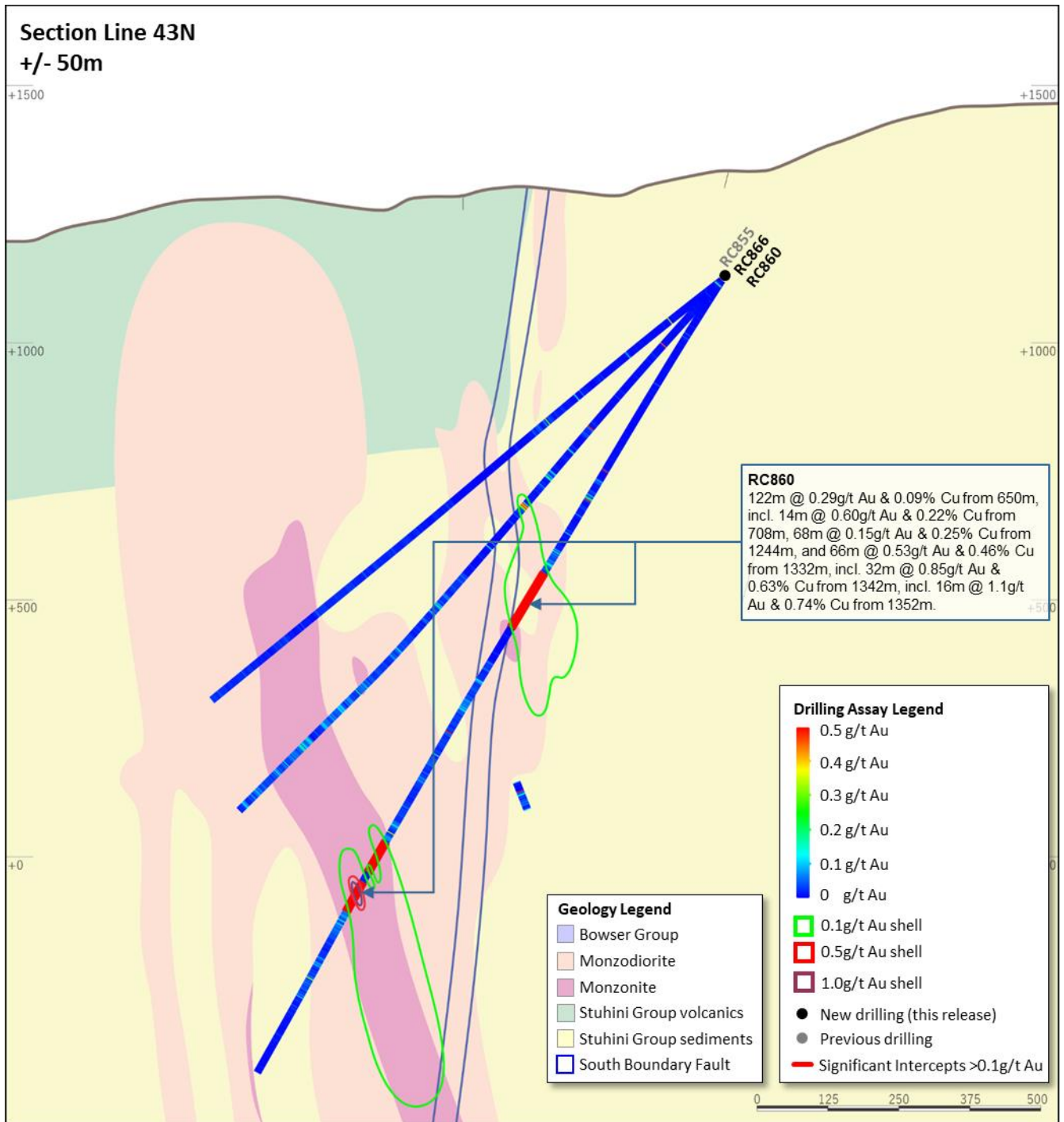


Figure 19. Schematic cross section of RC860 & RC866 (Section Line 43N – as shown on Figure 14) showing Newcrest and Imperial drill holes and Newcrest intercepts (drill intercepts have been reported in Appendix 2 of this report, and in prior Newcrest exploration releases) 0.1 g/t Au, 0.5 g/t Au and 1 g/t Au shell projections generated from Leapfrog™ model. Due to window size (+/- 50m) and section orientation (150°) hole may appear on multiple sections.