



Mount Polley Mining Corporation

an Imperial Metals company
Box 12 • Likely, BC V0L 1N0 • T 250.790.2215

MOUNT POLLEY MINING CORPORATION (MPMC) PUBLIC LIAISON COMMITTEE (PLC) MEETING SUMMARY

Meeting Details

In person Meeting and Conference Call, and Tour
General Meeting – Q3 2023

July 26, 2023

9:00 am to 1:00 pm

Meeting held at the Mount Polley Mine, 5720 Bootjack Forest Service Road

Meeting called by: MPMC Designated Representation

Meeting Chaired by: Gabriel Holmes

Minutes by: Alicia Lalonde

Member	Present	Call-in	Organization
Aaron Higginbottom			T'exelc - Williams Lake First Nation
Abhirosh Chandran		x	Ministry of Environment and Climate Change Strategy
Alicia Lalonde		x	DWB Consulting (MPMC)
Alex Gresl			Williams Lake Chamber of Commerce
Bee Hooker	x		Big Lake Community
Bill Carruthers			Williams Lake Community
Christine McLean			Mitchell Bay Community
Claudine Kadonaga			Likely Business
Darren Sargeant	x		Xat'sùll - Soda Creek First Nation
Don Parsons		x	Imperial Metals (MPMC)
Doug Watt		x	Likely Resident
Emily Sonnag			Xat'sùll - Soda Creek First Nation
Gabe Holmes	x		Mount Polley Mining Corporation (MPMC)
Jackie Sarginson			MLA Cariboo North Coralee Oaks Office
Jason Raine		x	University of Northern BC and Quesnel River Research Centre
Jason Ryll			Williams Lake Chamber of Commerce
Johanna Godt		x	Sedgewick Strategies (MPMC)
Kala Ivens	x		T'exelc - Williams Lake First Nation
Kelly Parker	x		MPMC
Ksenia Kolodka	x		Xat'sùll - Soda Creek First Nation
Linda Bartsch			Horsefly Business
Lisa Kraus			Likely and District Chamber of Commerce
Lyn Anglin		x	Consultant to Imperial Metals (MPMC)
Luc Lachance			Ministry of Environment and Climate Change Strategy
Mathieu O'Leary	x		Mount Polley Mining Corporation
Maureen LeBourdais	x		Cariboo Regional District
Melanie St Arnault			Ministry of Energy, Mines, and Low Carbon Innovation
Micky McIntosh			Likely Resident
Nishitha Singi			T'exelc - Williams Lake First Nation
Richard Holmes			Little Lake Community
Spencer Neufeld	x		T'exelc - Williams Lake First Nation
Steve Hocquard			Horsefly Community
Surinderpal Rathor			Williams Lake Government
Victoria Stevens		x	Ministry of Energy, Mines, and Low Carbon Innovation
Walt Cobb			Williams Lake Resident
Guests			

Meeting Start: 9:10 am

Roll Call – Introductions and acknowledgements – Gabriel Holmes

- I'd like to acknowledge that we operate on unceded traditional territories and work in partnership with the Williams Lake and Xat'sull First Nations.

Additions to Agenda, and Approval of Agenda – Gabriel Holmes

- As I have indicated in the agenda, we are going to go over the following:
 - PLC Membership and Terms of Reference Review
 - ENV/EMLI Discussion/Compliance Review
 - Permitting/Amendment Applications
 - Environmental Monitoring Update
 - Discharge/WTP Update
 - June 6, 2023 Phosphorus Exceedance
 - NPM
 - Water Management Update
 - Remediation/Reclamation Update
 - Mining Update
 - Job Opportunities/Production Mining
 - Roundtable Discussion
 - PLC Questions/Comments
 - Next Meeting- Oct 4, 2023?
 - Site Tour
- Does anyone have additions to the agenda, or have objections to it? If not, we are going to move on through what we have planned.
- Agenda approved.

PLC Membership and Terms of Reference Review – Gabriel Holmes

- Each of us as members can identify people and reach out to people that may be interested in joining the committee. If anyone has someone in mind, an individual or organization, please forward that to me.
- There are still numerous vacancies on the committee.
- Minor updates need to be made to references in the table of the ToR eg: FTP site should be Sharepoint site.
- Please review the ToR periodically and know your responsibilities.
- Mike Stinson has resigned his position, and has delegated Darren Sargeant be his designate.
- Taylor Strosher has been assigned to another position at the Ministry of Environment so we will have a new representative join us in September, in the interim you can direct questions or concerns to Luc or Abhi.
- Ksenia Kolodka (Xat'sull FN), Spencer Neufeld (WLFN- designate for Aaron Higgenbottom) and Johanna Godt (Sedgewick Strategies) are joining the committee.
- There is a community member interested in joining the PLC, Jen Lemare who works for Falkirk Consulting in Indigenous Relations. I have sent her the ToR. There were no objections to her joining the committee.

- Action item: Mount Polley Employee representative should be changed to United Steel Workers Union representative. This is a good opportunity to rejig the ToR membership and allotted seats. Let's add the First Nation Health Authority as Spencer suggested and we will recirculate the updated ToR for approval.

Communications

- It is important that we communicate to the regulators and stakeholders regularly, our doors are always open.
- We are committed to our communications plan.
- We have the PLC, Sharepoint and other websites, meetings, calls and presentations, tours and reporting.
- A Community Initiatives Committee has recently been formed and has committed support for various community events such as the WL Indoor Rodeo, Heavy Metals Rocks- Highschool student integration into the work force, Mining for Miracles Charity BBQ and Thrill of the Grill contest benefitting BC Children's Hospital, MPMC Fishing Derby, Big Lake Fishing Derby, BC Mine Rescue/First Aid Competition, National Indigenous Peoples Day, Williams Lake Stampede, Performances in the Park, company golf tournaments and company Christmas parties.
- Safety
 - We are going to start including some safety statistics in these meetings now that we are in operations. MPMC is committed to providing a safe and inclusive work environment to all of its workers, staff, contractors and guests.
 - Initiatives- Quarterly site wide communication meetings, regularly scheduled departmental safety meetings and Shift Cycle Audits (each department does a weekly audit of their work area and passes on the results to the rest of the department), Joint Occupational Health and Safety and Environmental Committee, Mine Rescue training weekly
 - Safety statistics are included in the tables below. In 2022 we had a bit of a rocky year commissioning the mine but it merits discussion. We do investigate all of these incidents. In 2023, the statistics have turned around. We have a safer workplace and workforce, and there is more awareness out there.

	2022	Reportable Injuries/ Incidents	
		July MTD	YTD
LOST TIME ACCIDENT	8	0	0
MEDICAL AID	15	0	5
FIRST AID	98	2	37
REPORTABLE INCIDENTS	3	2	6
DANGEROUS OCCURENCE	8		
		Reportable Incident	

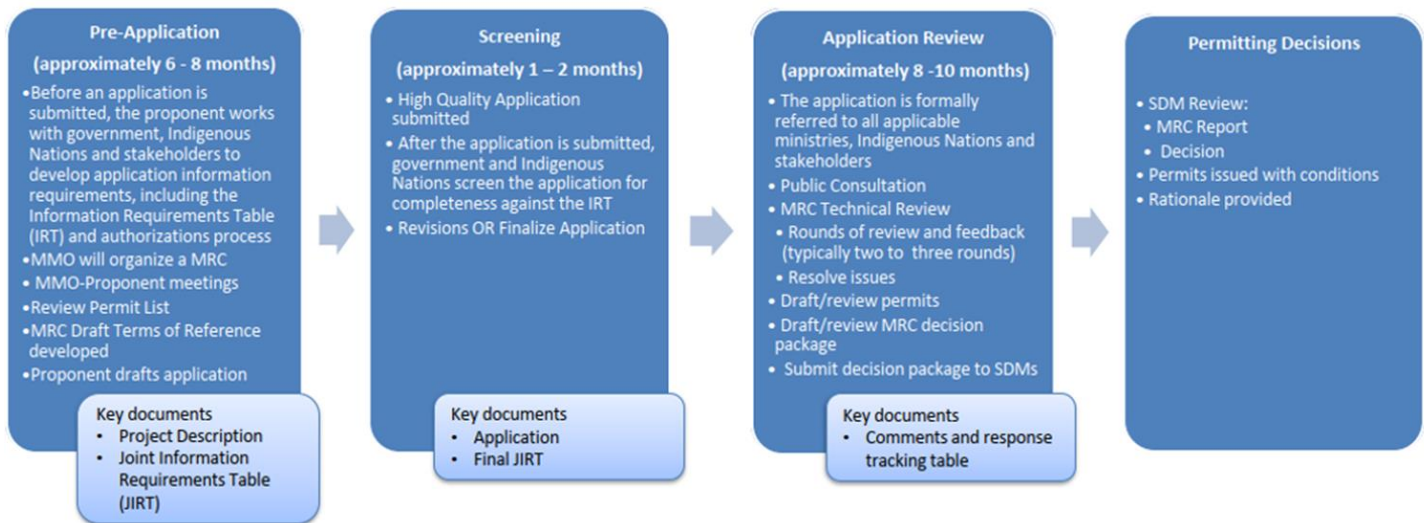
ENV/EMLI Discussion/ Compliance Review

- Let's open up the floor to Abhirosh and Victoria. Do you have anything to bring to the committee's attention regarding compliance from a regulatory perspective?

- Abhirosh Chandran (AC): No, I don't have anything at this time. But just a reminder that we have sent out the CEMP for comments and comments need to be submitted by this Friday.
- Victoria Stevens (VS): I don't have anything at this time. I will make a note for the next meeting to prepare by going through the compliance folders. We are continuing to make the split between the permitting team and the compliance unit so I'm not sure who has been to site this year or who plans on going but I will find that out for the next meeting.
- GH: We had EMLI representatives come out and do a reclamation audit and inspection last week. We have some advisories as a result of that inspection. Things like signage missing on stockpiles, reinitiating metal update monitoring here on the mine site and dust from stockpiles, and they had questions about their desktop review of the annual reclamation report. We did have a total phosphorus exceedance that will be discussed in a couple of slides. An investigation report will be distributed once finalized.

Permitting/Amendment Applications – Gabriel Holmes

Mount Polley Mine Permitting Process



- I left this slide in from our last meeting to provide some insight into how the permitting process works from pre-application to permitting decisions.
- Joint Application:
 - Springer Expansion: 8-10 years of work, application is underway and is projected to be submitted in 2023 Q3
- Individual Applications:
 - NAG/PAG Ratio Reduction: We are looking to reduce the NAG/PAG ratio from 2:1 to 1.5:1. This makes for a smaller PAG stockpile when we put it back into the pit. There are two more months of testing remaining in this study looking at acid generation in rock. The preapplication has been submitted and the application is expected to be submitted in 2023 Q4.
 - TSF 970m - 974m: The preapplication has been submitted and the application is expected to be submitted in 2023 Q3.
 - TSF 974m - 987m: This height gets us through the life of the mine. The preapplication has been submitted and the application is expected to be submitted in Q1 2024.
- Notice of Departure:

- TSF Above 970m – prep work: We are in the early stages of planning for buttresses and re-sloping. The preapplication has been submitted.
- SERDS Co-Disposal: This involves the modification of cells where tailings from the Springer Pit are placed. There is more space in cells than we expected, the material is drier than we were expecting and much less blast rock is being added to handle and transport it but it is working out very well.

Environmental Monitoring Update – Gabriel Holmes

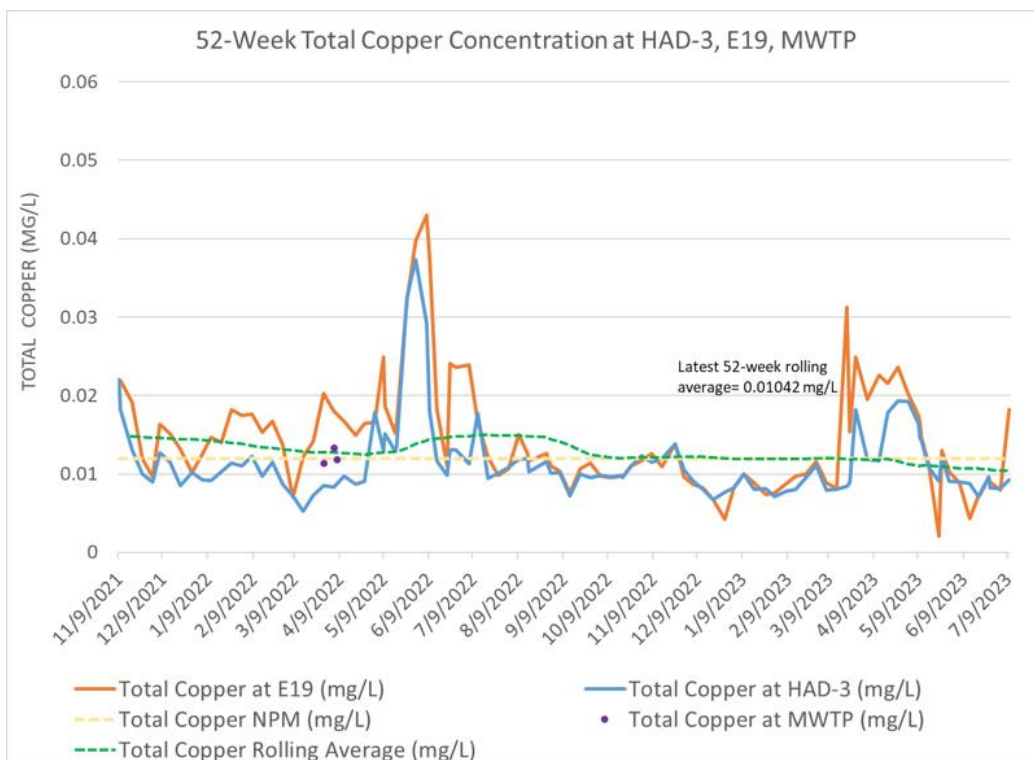
- Throughout the quarter we completed water sampling including surface and groundwater, flow monitoring, wildlife monitoring, weather monitoring, waste management, reporting and planning.
- We have a comprehensive environmental monitoring program: we spend a lot of time monitoring and sampling water to inform water management decisions.
 - We have groundwater monitoring wells located all over the site plus our wells that service the mill. We monitor for bacteriological parameters where there may be exposure for our employees. We are currently getting an update for that system for the mill building to deal with potential contamination such as pathogens that may make their way into our potable water system.
 - Surface water sampling: Polley Lake, pit lakes, Wight Pit, Hazeltine Creek, Edney Creek, mine site seepage, groundwater and the Water Treatment Plant are all sampled regularly.
 - The NEZ seeps are anomalous sites that contribute to our water system that are monitored independently.
 - We routinely analyze for chemistry, and certain waters are analyzed for toxicology (the discharge).
 - We complete routine weekly, monthly, quarterly, semi-annual and annual sampling. We collect ~2000 samples per year and the samples analyzed are evaluated by our Qualified Professionals.
 - We do sample various other sites around the mine site for supplemental information.
- Flow monitoring: We've had our QP out to do some gauging at our hydrological stations and flow monitoring stations at various creeks around the site. He completed manual measurements and rejiggered some sites and cleaned them up so that we can improve the quality of the data. We did find that there was some scatter in some of the discharge curves last year so we are investigating that. We complete flow monitoring on a monthly basis at a minimum.
- Ongoing wildlife monitoring programs: small and large mammal programs were ongoing and bird song surveys were completed. They key into the remediation effort at Hazeltine Creek. We captured some really great photos again this year of large mammals, which we are still going through. This is ongoing work. If I'm not mistaken, it is a 10-year program.
- Reporting and planning: We spend a lot of time planning and reporting our activities.
- Weather
 - We have 2 stations on site that monitor parameters every 5 minutes (rain, temperature, wind direction, wind speed, gust speed, solar radiation, relative humidity, dew point, battery).
 - We have finally bit the bullet and made the decision to replace the solar system at our Orica station. It has been ordered and will be installed once received in the coming weeks.
 - MPMC has been collecting climate data since 1995.
 - We collect snowpack measurements manually twice per month.
 - We were above the average snowpack for 2022/23.

- June 6 Total Phosphorus Exceedance
 - On June 6, 2023, MPMC Environmental Department staff collected routine water samples at the discharge point of the Water Treatment Plant (WTP) into Quesnel Lake, identified as QUL-58, and referenced as E304876. This data was reviewed by MPMC staff on June 19, 2023 at approximately 9:00am. At this time, it was confirmed that the sample results for total phosphorus at QUL-58-AP (above plume) and QUL-58-MP (mid plume) were 0.0378 mg/L and 0.0126 mg/L, respectively, both of which exceeded the EMA Permit 11678 edge of Quesnel Lake Initial Dilution Zone (IDZ) limit of 0.010 mg/L. MPMC staff notified the Director and site management, and put the WTP into recirculation mode immediately. These elevated total phosphorus concentrations initiated a Level 3 Trigger: Exceedance of Receiving Environment Trigger Levels- Monitoring and Response as per the MPMC 2022 Annual Discharge Plan (ADP), Section 5.1.2.1. Samples were collected at QUL-58 and the background site QUL-2a (E303020) on June 19, 2023 and priority service was requested from the lab. A sample was also collected from the WTP before it was put into recirculation on June 19, 2023. The results from the samples collected on June 19, 2023 were received by email on June 21, 2023 and reviewed by MPMC. The sample results indicated total phosphorus concentrations of 0.0036 mg/L at QUL-58-AP and 0.0029 mg/L at QUL-58-MP, which are below the permit limit of 0.010 mg/L. The samples collected at QUL-2a, also yielded total phosphorus concentrations less than the permit limit. Modelled QUL-58 data was compared to the receiving environment trigger levels with no exceedances identified. The Director was notified via email on June 21, 2023 and the WTP resumed normal operation in accordance with the ADP on June 22, 2023.
 - We have observed an increase in total phosphorus during freshet in Quesnel Lake with high water levels and in tributaries of Quesnel Lake. We have seen it with regularity in Hazeltine Creek, Edney Creek and the Horsefly River. We don't know beyond those 3 waterbodies how this phenomenon arises and its effect but it seems to be short-lived, and we have observed these conditions in the past being attributed to freshet and high flows. I sent out an email response to Christine (McLean) which you should have all received regarding those conditions in the lake.
 - The final investigation report is forthcoming. Hopefully it will be sent out next week and we can discuss the outcomes further once the report has been circulated.
- Waste Management
 - We generate a lot of waste at a facility such as this and it is important that it be disposed of in a responsible fashion.
 - We have a permitted landfill on site and have many recycling initiatives underway.
 - We are all responsible for our own waste.
 - Clean up and proper disposal of waste is part of our job.
 - Applicable regulations: Environmental Management Act, Hazardous Waste Regulation, Ministry of Environment Permit PR 14590
 - We have independent management waste streams for: food waste, drink containers, paper, cardboard, 5-gallon pails, etc.
 - GFL Environmental is service provider for hazardous and non-hazardous waste, they take our waste oil, rags, etc.

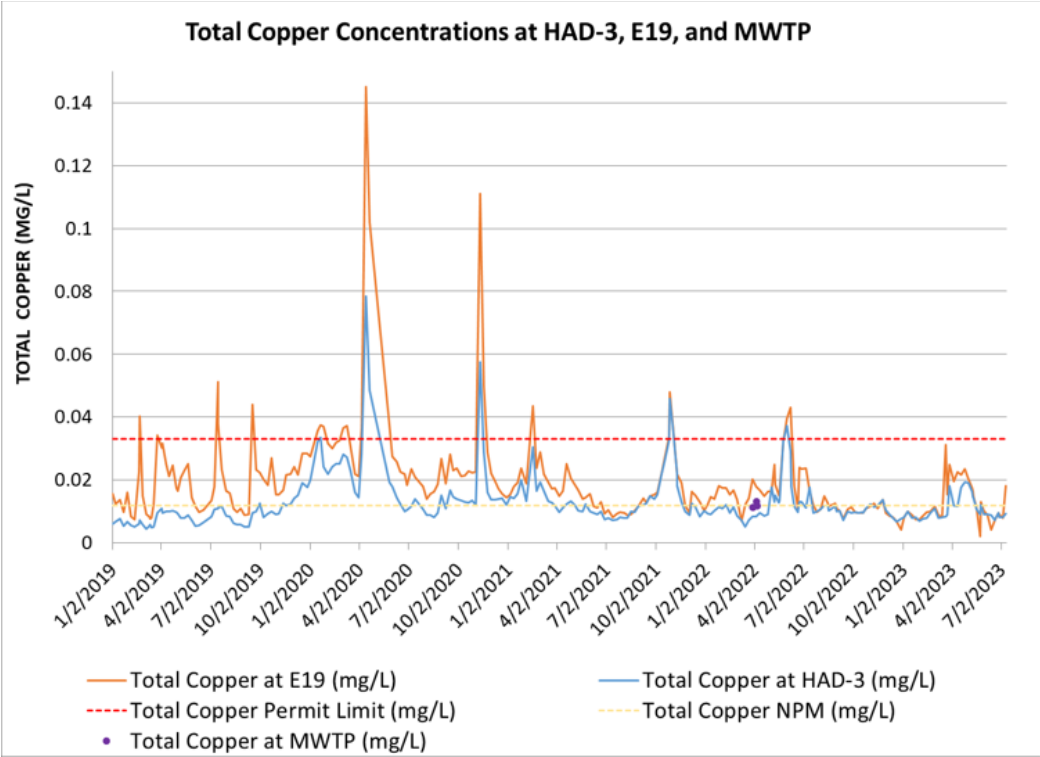
Water Management Update – Gabriel Holmes/Mathieu O’Leary

- Discharge/WTP Update

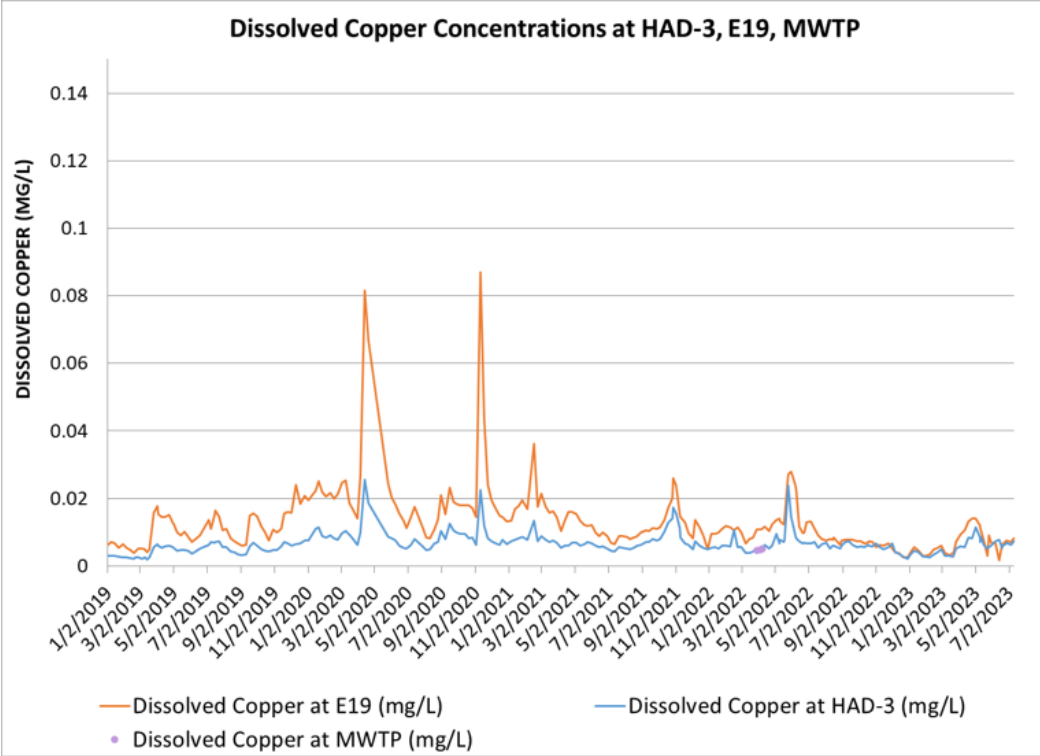
- Discharged nearly continuously throughout Q2, though there were some down hours due to influent supply.
- A total of ~1,659,169 m³ were discharged in Q2 with an average discharge rate of 0.211 m³/sec, average of ~18,232 m³/day.
- The authorized annual average rate of discharge is 29,000 m³/day.
- The maximum authorized rate of discharge is 52,000 m³/day.
- The mobile plant was decommissioned on May 10 and removed from the site.
- NPM (Numeric Performance Metric): We are endeavoring to meet the NPM. Concentrations have been declining. We are currently at 0.01042 mg/L (see graph below). Spikes are seen in the influent and effluent but the plant has been operating well because of favorable environmental conditions and our operations. The TSF Supernatant has seen a significant reduction in copper concentration since we resumed full operations. That is associated with production and reagent addition, specifically sodium hydrosulphide which creates a precipitant which drops out of the water column. This is an extraordinary turnaround compared to our water quality when we were in Care and Maintenance.
- Action Item: Show TSF Supernatant data in Q4 meeting.



- WTP Influent vs Effluent Total Copper
 - Each spike is an exceedance that has triggered an investigation.
 - Action Item: Update charts- reference to MWTP should be removed

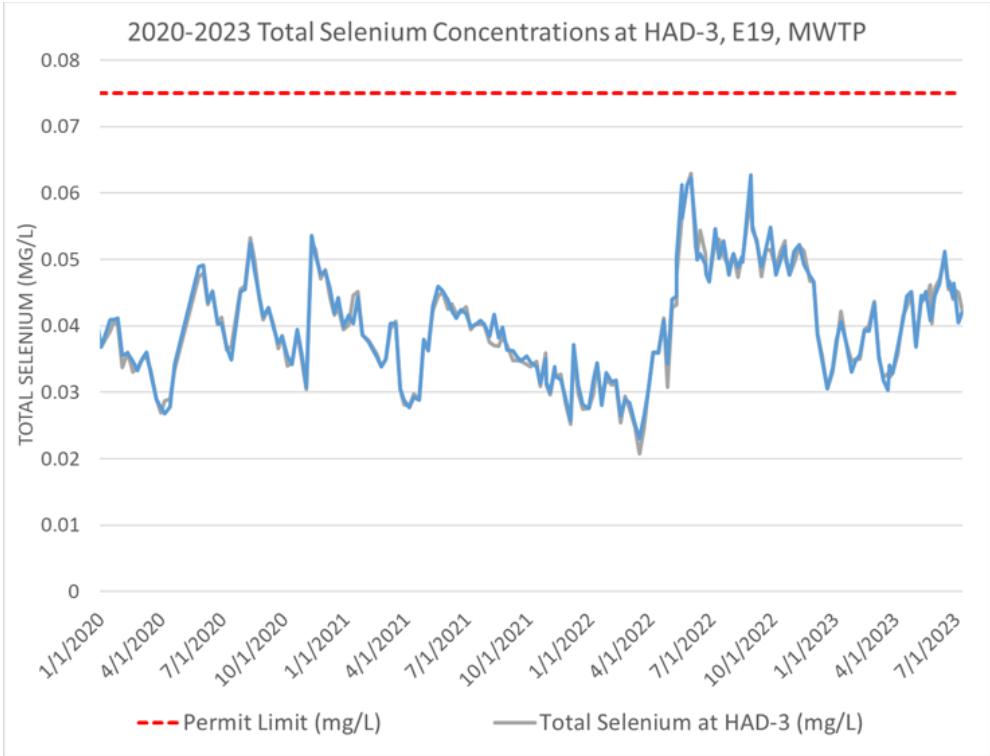


○ WTP Influent vs Effluent Dissolved Copper



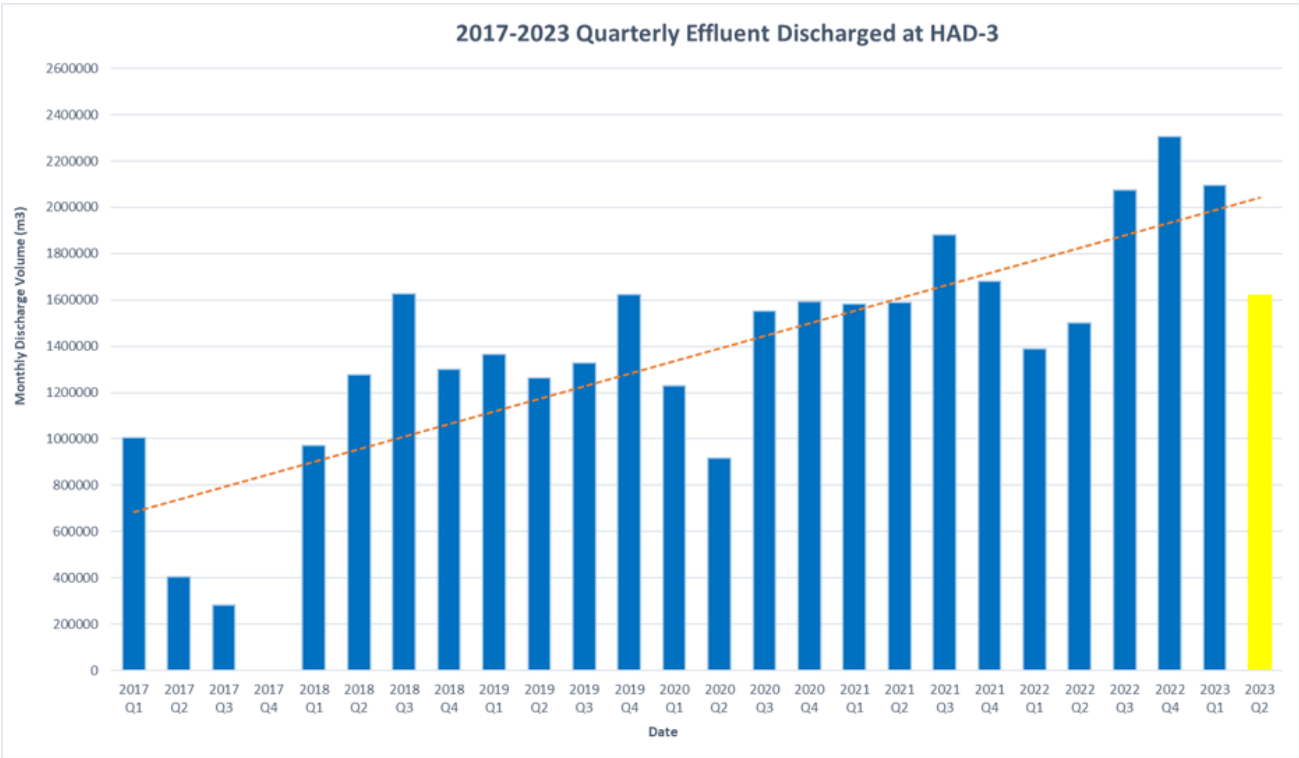
- This graph shows dissolved copper which includes particles that pass through a 0.45 micron filter. We've seen more stability in the data from the last couple of years.

○ WTP Effluent Selenium



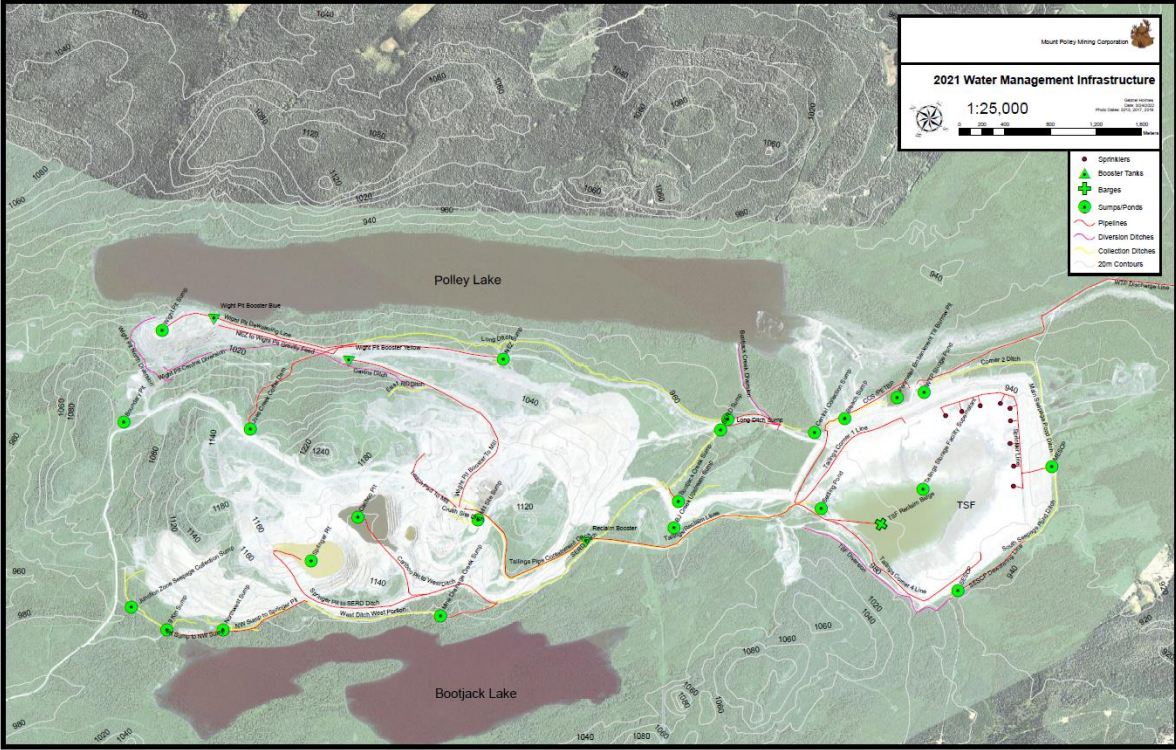
- There have been pretty stable selenium concentrations all below the permit limit.

○ 2017-2023 Quarterly Effluent Discharged

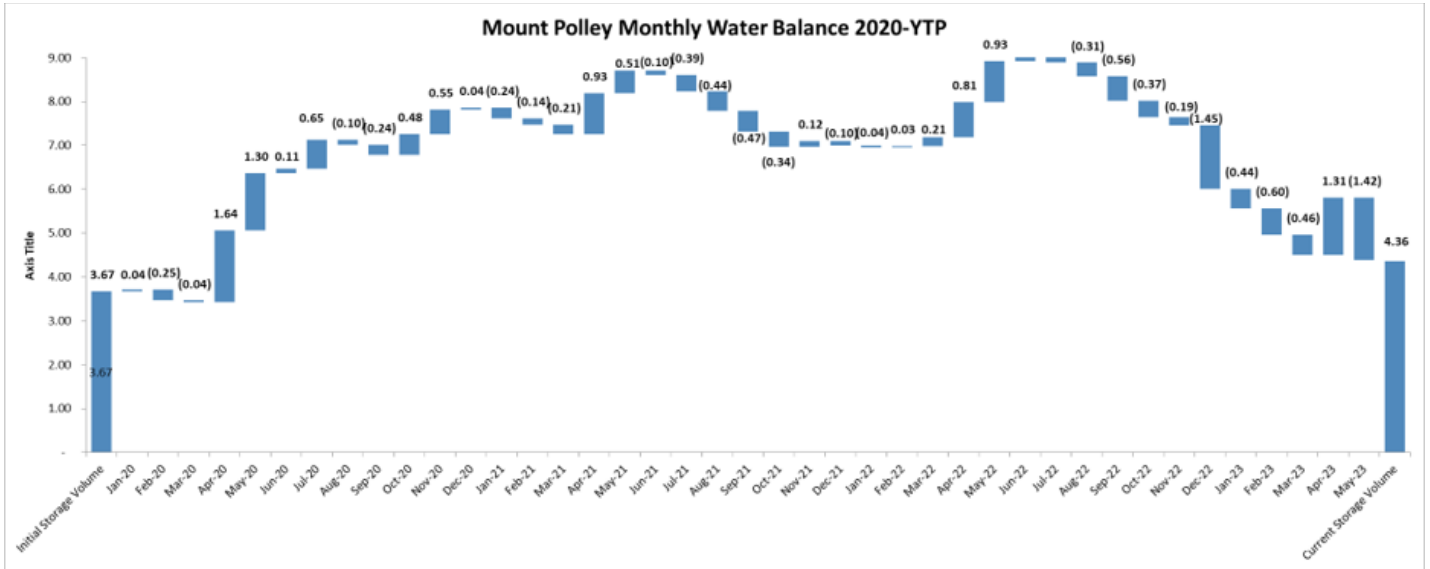


- The discharge in Q2 decreased as we had reduced throughput as we are catching up on our water balance. Now that we are catching up, we should find a steady state where we see increases in throughput in the spring and decreases in the fall. Though we do have anomalous years of snowpack. We were above the average snowpack this year but because we had a spring with no precipitation, we were well on our way to managing that water.

- Water Management Infrastructure
 - This map shows our diversion ditches, collection ditches, pipelines, sumps and ponds.



- Year over year water balance comparisons
 - This waterfall graphs shows total site water balance beginning in January 2020 (3.67 Mm³). In 2020 we had very high snowpack and we accumulated a lot of water in 2020 and 2021. In 2021 we start to see some decreases month by month. In 2022, we were operating an additional WTP and you can see the last couple columns drop because we had the two plants operating simultaneously. Currently, we are sitting at just about 4 Mm³ of water on site The majority of that water is in the Wight Pit.



	Volume - This week (Mm3)	Volume - Last Week (Mm3)	Total Change (Mm3)
TSF	1.586	1.586	0.000
Cariboo Pit	0.161	0.254	(0.093)
Wight Pit	2.277	2.292	(0.015)
Total	4.023	4.132	(0.108)
Volumes As of	July 25, 2023	18-Jul-23	
	Elevation - This week (m)	Elevation - Last week (m)	Total Change (m)
Springer Well 1 Elevation (m)	939.34	939.34	0.00
Elevations As of	July 25, 2023	July 18, 2023	

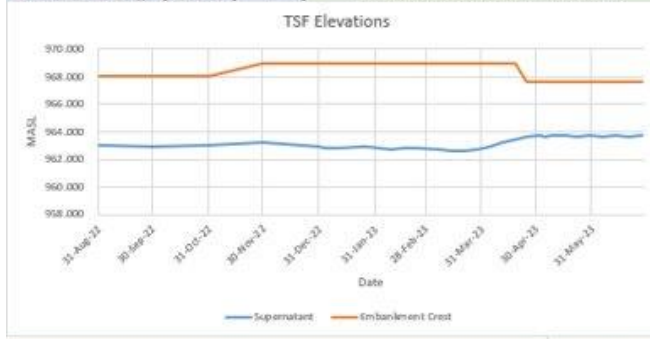
- The TSF has 1.5 Mm³ of water which is operating in the normal operating area. The Cariboo Pit has 160,000 m³ of water which is more or less acting as a dewatering sump for mining operations. The rest of the water is in the Wight Pit. We transferred a lot of water from the Cariboo and Springer pits to the Wight Pit a couple of years ago to start up operations and now we are dewatering the Wight Pit. Influent rates at the WTP have been decreasing because we don't have the infrastructure set up to get high-capacity water out of the Wight Pit but that's what we are working on right now.
- On the TSF Dashboard which is updated weekly, we look for freeboard. The Quantitative Performance Objective (QPO) is to be above 1.1 m of freeboard. The other significant number is the Supernatant which is the pond volume. It is 1.54 Mm³ which is within our operating range. Shown in the green is all of the instrumentation. We monitor the instrumentation daily and everything is within the normal range. There is nothing outstanding or causing issues. When there is anything outside of the QPOs, it will be highlighted on the Dashboard. The EoR reviews this data thoroughly and will increase or decrease the frequency of monitoring on an as needed basis.

Weekly TSF & Water Management Systems Status

July 25, 2023

Actual	Actual	Actual	Actual	Actual	Actual	Today
26.9 °C 7.4	20.9 °C 7.6	20.4 °C 7.3	25.6 °C 10	28.7 °C 10.8	20 °C 11.5	21 °C 10

Water Management Status			Instrumentation Status		Pumping/Flow Status					
					Location	Pumps	Destination	Max Vol per Pump (m3/day)	Usage	Approx Vol Pumped (m3/day)
TSF Pond Elevation	963.83	m	Inclinometers	0 SLOVER QPO within QPO*	WTP	2 of 2	To Quesnel Lake	28,000	57%	15,912
Freeboard	3.8	m	Piezometers	within QPO*	NEZ Sump	1 of 1	Mill	1,920	0%	0
Supernatant	1.54	Mm ³	IPI	within QPO*	NW Sump	1 of 2	To Mine Drainage	20,000	2%	400
Remaining Storage	5.34	Mm ³	Survey Monuments	within QPO*	NW Sump	1 of 2	Springer Pit	20,000	0%	0
Min. Till Height	967.6	m	SAA	Golden Printer Review	Barge	4 of 4	To Booster	50,000	87%	43,500
WTP Effluent Discharge	641	m ³ /h	Beach @ Corner 1	>100 Meters	Wight Pit	1 of 2	To Long Ditch	8,712	33%	2,917
Springer Tails Remaining	1.63	Mm ³	Beach @ P. Emb	>100 Meters	Till Borrow	0 of 2	To TSF	20,000	0%	0
SP Tails Removed	0.39	Mm ³	Beach @ M. Emb	>100 Meters	CCS	0 of 3	To TSF	20,000	0%	0
Springer Well 1 Elevation	936.12	m	Beach @ S. Emb	>100 Meters	TSF Booster	4 of 5	To Mill	43,608	100%	43,608
			Refer to TSF Weekly Report		TSF Diesel	1 of 1	To CCS	13,000	0%	0
Cariboo Water Elevation	951.23	m	TSF Remaining Volume	6.88	TSF Booster	0 of 3	To Cariboo Pit	13,000	0%	0
CP Volume	0.16	Mm ³	(Mm ³)		Springer Wells	2 of 2	To West Ditch	3,840	39%	1,486
Wight Water Elevation	909.236	m	Pit Monitors	Good	Cariboo sump	2 of 2	To West Ditch	24,000	29%	6,964
WP Volume	2.28	Mm ³			Site Runoff		To Long Ditch	3,500		500
TSF Elev Under Barge	958.60	m	*QPO Ref #: 1413803-085-TM-Rev3-5115		Site Runoff		To SERD Ditch	2,500		1,200



Comments

- The WTP is operating normally with average effluent at 641m³/hour.
- Lake Excavating is currently working between corners 2 and 4.
- Dry preferential infiltration paths 2-100 and 2-150 at the upstream toe of the upstream fill
- Sink hole excavation from March 16th, 2023, remains open.
- IPI is still unable to be read.
- Newly calibrated probe was found to be unreliable on longer SI holes.
- Once instructed to, the excavation will be completed.
- Reprogramming will be completed as soon as possible.
- The backup probe is being used and another probe has been purchased. Holes with unreliable data will be reread and submitted on next week's report.

- Tailings Storage Facility
 - Pumping down to meet QPOs
 - Favorable water quality amenable to treatment
 - Working to meet EoR QPOs at all times
- Springer Pit
 - Dewatering wells and removing tailings is ongoing. We had 3 dewatering wells for some months but we have really been digging into the tailings. We had to rejig those wells and 2 of them have been removed, the remaining well will going today.
- Cariboo Pit
 - Maintaining water elevation to permit mining
 - Providing water to the concentrator for processing
 - Partially backfilled to facilitate mining
 - Ongoing monitoring at the end of pipe
- Wight Pit
 - Currently partially flooded
 - Surplus water storage
 - Ongoing monitoring at the end of pipe, we are pumping out of the pit to the WTP
 - Supplementing WTP influent
- Maintenance / Improvements

- Mine site drainage- We would like to upgrade facilities for mine rescue, first aid and environmental storage so we are filling in one of our sumps and some of our old waterworks.
- Mobile WTP operations have ceased
- Potable water system upgrades are in the works. Water system engineers are looking at a water filtration and treatment system which was derived from an Interior Health audit looking at the hazards of our well water on our workforce. There is a link on the Interior Health website that directs you to all of the water advisories in the region. It is quite helpful if you're interested.

Remediation/Reclamation Update – Gabriel Holmes

- No remediation work was completed in Q2. Environmental monitoring activities are ongoing in the remediated areas and planning is underway for the completion of the project.
 - We saw an increase in the salmon using the creek this spring.
 - We have our cold-water pump running to mitigate any risks to the fish residing in the creek. The pump runs 24/7 and we've had to run it for 6 or 7 weeks for the last few years. It is a contingency as we have seen temperatures of the creek exceed 25 degrees C.
 - Vegetation is establishing well. It is a great year for growing.
- We are starting year 1 of our Reclamation Research Program this year. We've laid out 10 years of reclamation research that builds on our past research. Some of the work is ongoing maintenance type work. We are, as of today, doing an invasive plant management assessment and inventory. We haven't had any species in the past that haven't been managed regionally. We are also looking at some new work with biosolids.

Mining Update – Gabriel Holmes

- Production Mining- Production targets were made in the pit and the mill in Q1, and we are close to meeting our targets in Q2.
- TSF Construction underway- We are working on the last 1-1.5m of dam which brings us up to the permitted height of 970m. It will be completed in the next 3-4 weeks, and because we still have some time before the end of the season, we want to start doing some work on the foundation and buttressing early to lessen the workload for next year.
- TSF Mock Scenario- This is required under the OMS every 5 years and it covers the emergency response plan. The last scenario was completed in 2017. It involves all of our stakeholders, the CRD, local emergency responders, WLFN, XFN as well as the mine site. It is planned for the fall. It will take some coordination with all of the required parties to determine a date. Matt (O'Leary) will send out an email regarding a scheduled date in the coming months.
- Job Opportunities – We are hiring. Operations are in full swing and we are looking for new members to join our team.
 - We are hiring in all departments.
 - As of the end of May there were 275 MPMC employees: 182 full time hourly, 88 full time salaried, 1 part time hourly, and part time salary
 - Between Jan 1, 2023 and March 31, 2023, we have hired 34 new employees, however, 42 have terminated their employment
 - Men: 217, Women: 58, First Nations (declared): 17
 - Contractors on top of those numbers
 - Looking for a target of 355 full time employees
 - Updated employment numbers as of today: 293 hourly staff, 75 contractors for a total of 368

- Engineering Life of Mine Plan
 - Permitting is ongoing with the Major Mines Office
 - SERDS Co-Disposal (Springer Pit) permit
 - Life of Mine plan permit
 - TSF raise permit
 - 9.5 years of mining (ending 2032)
 - Additional 1.5 years of PAG rehandle back into the Springer Pit
 - 313 million tonnes mined (ore and waste)
 - 283 million lbs of copper recovered
 - Ongoing exploration which could extend the mine life

Round Table Discussion

None.

PLC Questions/Comments

None.

Next Meeting

- October 4, 2023, where TBD

Meeting End 11:15 am

Resources

PLC SharePoint Site:

<https://imperialmetals.sharepoint.com/sites/MountPolleyPLC>

BC Ministry of Environment Natural Resource and Enforcement Database:

<https://a100.gov.bc.ca/pub/ocers/searchApproved.do?submitType=menu>

BC Mine Information page:

<https://mines.nrs.gov.bc.ca/>

mountpolley.com

imperialmetals.com

[Facebook.com/mountpolley](https://www.facebook.com/mountpolley)